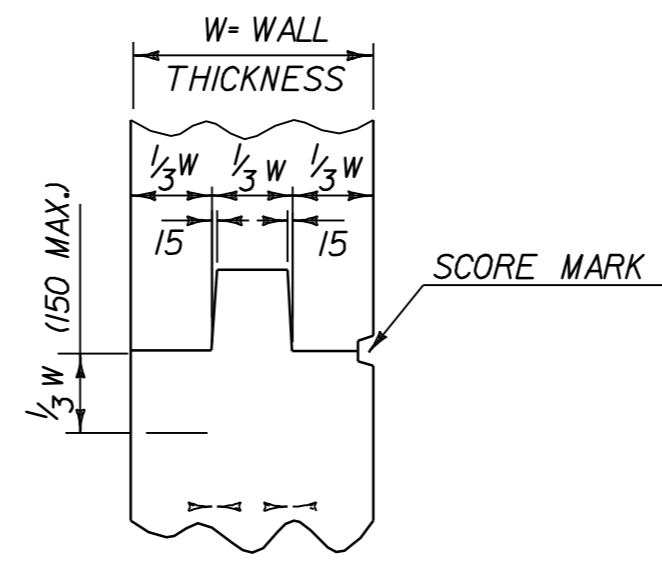
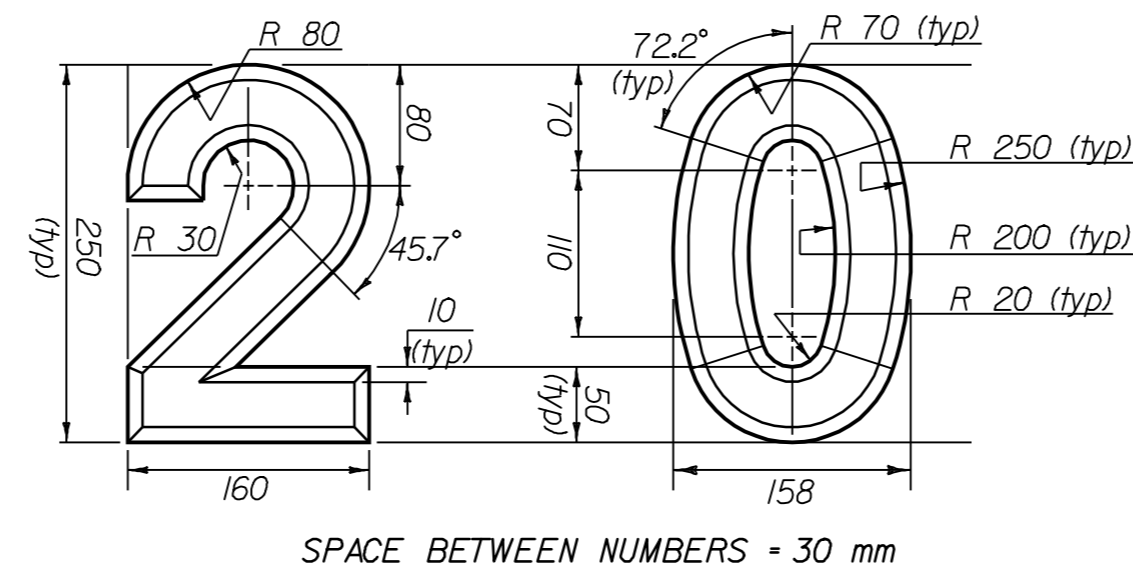


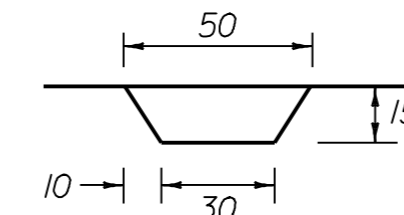
TRANSVERSE BRIDGE SLAB CONSTRUCTION JOINT DETAILS



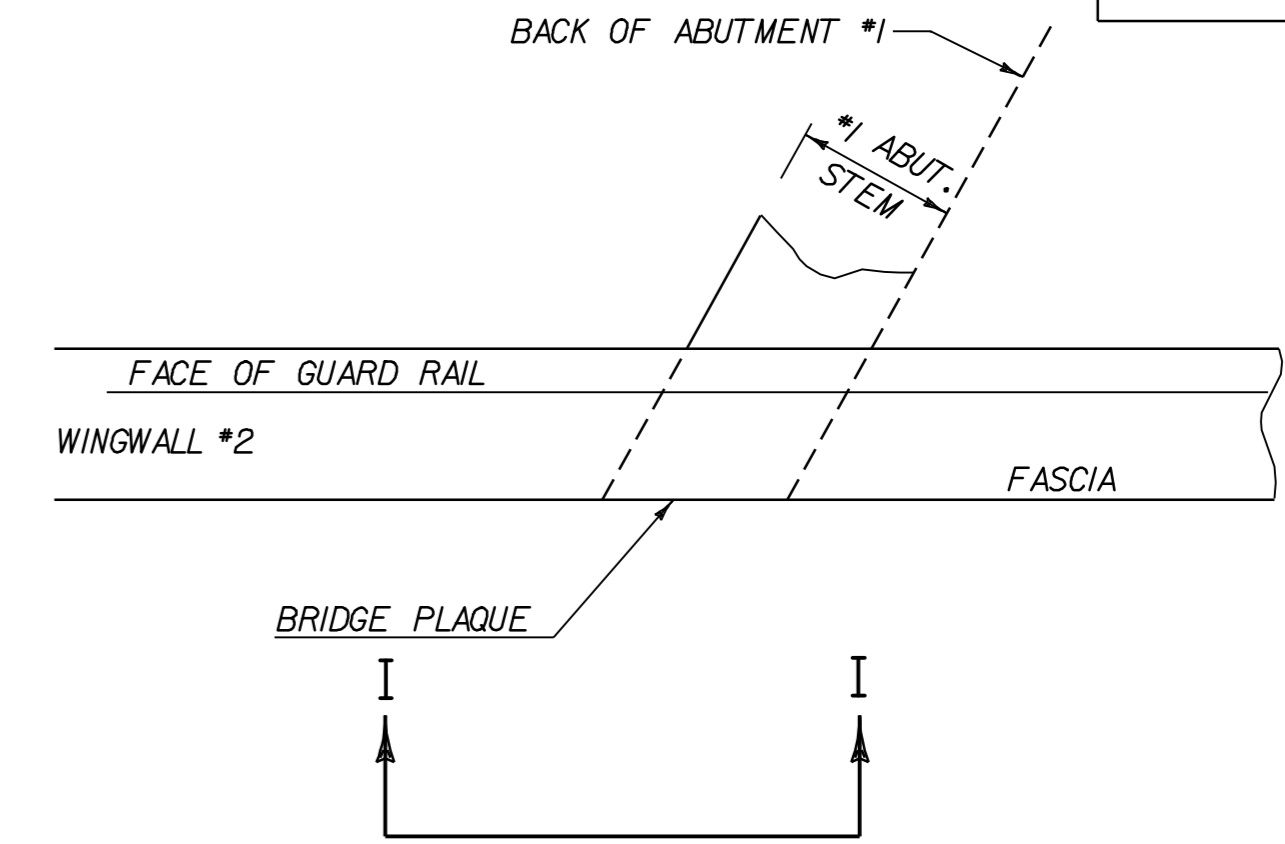
TYPICAL CONCRETE CONSTRUCTION JOINT



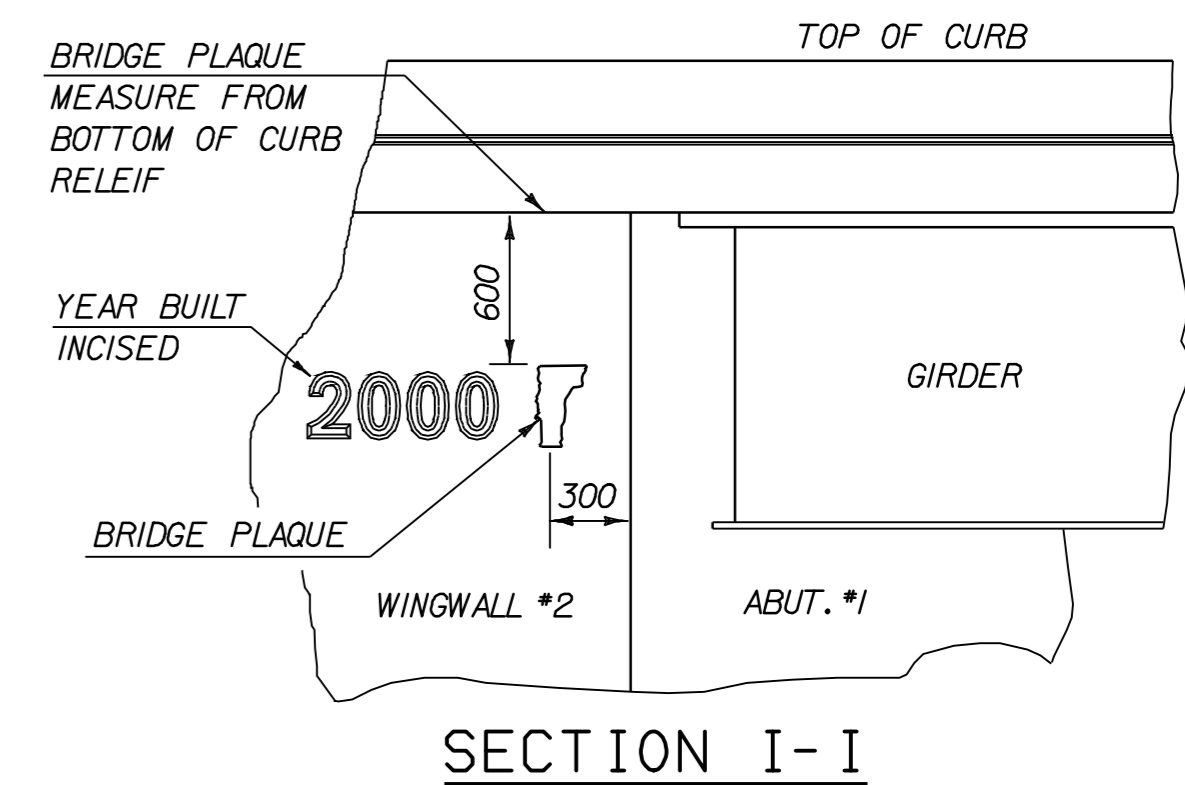
NUMBER DIMENSIONS



TYPICAL CROSS SECTION OF NUMBER



PLAN



SECTION I-I

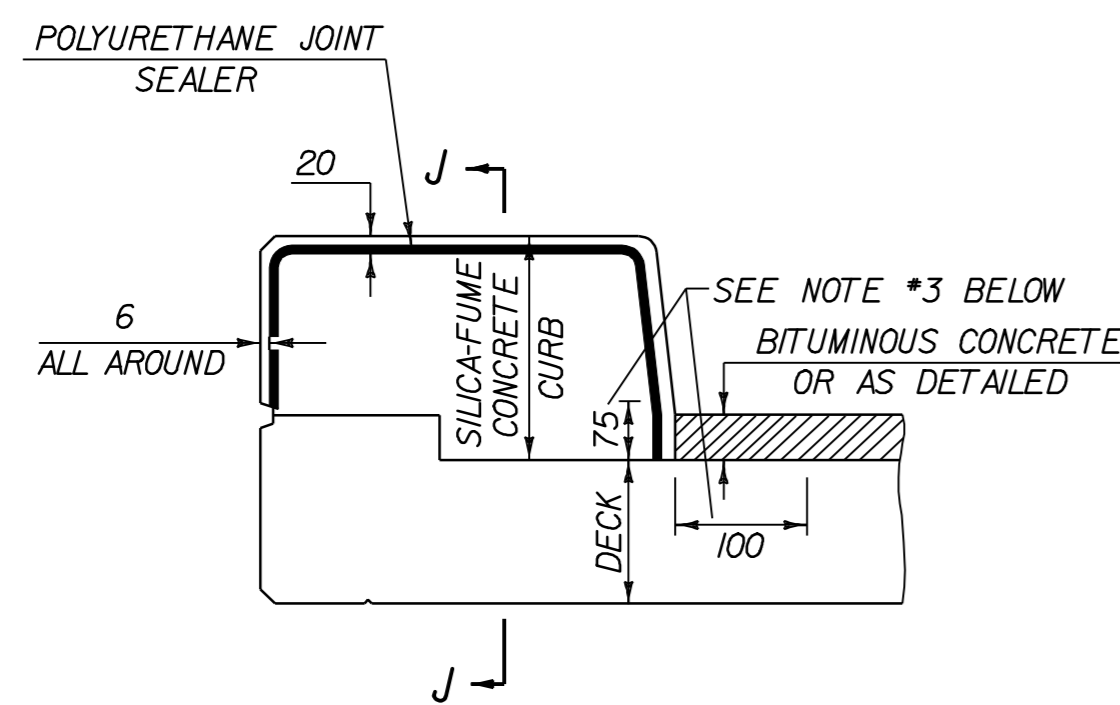
LOCATE BRIDGE PLAQUE

THE BRIDGE PLAQUE WILL BE SUPPLIED BY THE AGENCY OF TRANSPORTATION AND SHALL BE INSTALLED BY THE CONTRACTOR AT ABUTMENT #1 ON THE RIGHT SIDE AS SHOWN OR AS DIRECTED BY THE ENGINEER.

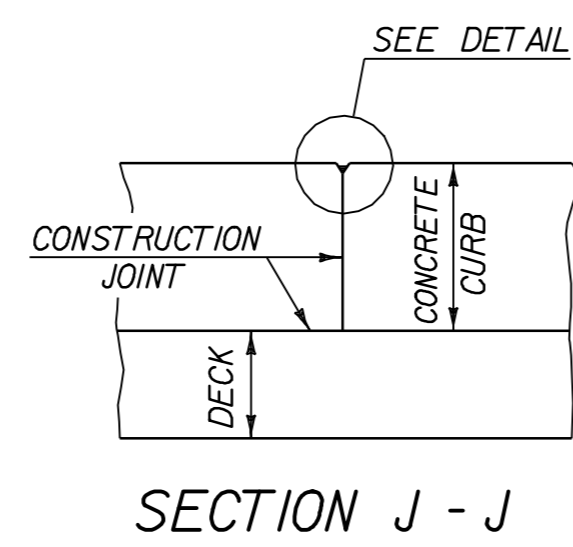
THE YEAR SHALL BE INCISED TO LOOK LIKE CHISLED ENGRAVED NUMBERS.

EACH OF THE NUMBERS FOR THE YEAR BUILT SHALL BE 250 mm HIGH AS SHOWN. EACH NUMBER SHALL BE INSET INTO THE CONCRETE BY 15 mm WITH THE SIDES BEING SLOPED BY 10 mm.

THE NUMBERS SHALL BE HORIZONTALLY CENTERED WITH THE BRIDGE PLAQUE

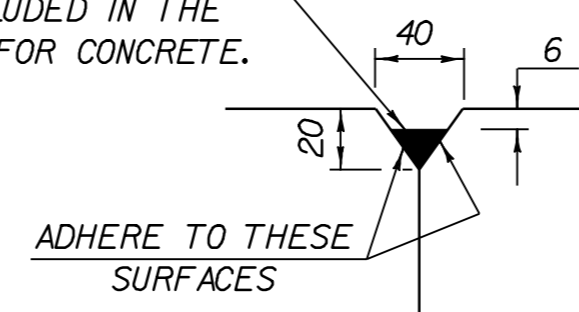


TYPICAL SECTION THROUGH CONCRETE CURB CONSTRUCTION JOINT

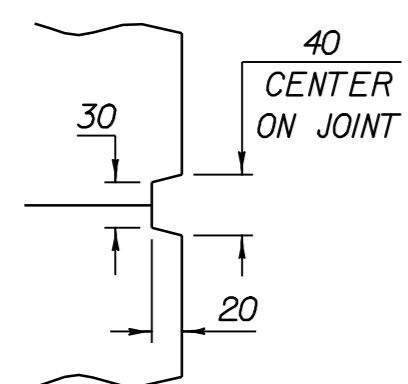


SECTION J - J

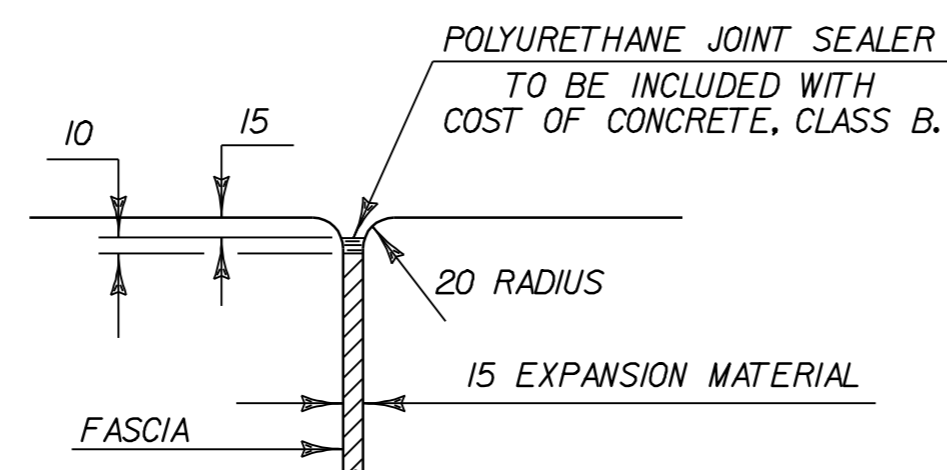
POLYURETHANE JOINT SEALER PER SUBSECTION 524.06C COLOR TO MATCH CONCRETE. COST TO BE INCLUDED IN THE UNIT PRICE BID FOR CONCRETE.



CONSTRUCTION JOINT SEAL



SCORE MARK DETAIL



JOINT BETWEEN FASCIA AND WINGWALL

- NOTES:
1. CONSTRUCTION JOINTS THROUGH CONCRETE CURBS SHALL BE SPACED MAXIMUM 45 M CENTER TO CENTER AND SHALL BE 0.5 M MINIMUM FROM THE CENTER OF THE NEAREST BRIDGE RAIL POST. CONCRETE SHALL BE PLACED IN ALTERNATING SECTIONS WITH A MINIMUM OF 48 HOURS DELAY BETWEEN ADJACENT POURS.
 2. LONGITUDINAL REINFORCING SHALL PASS THROUGH CONCRETE CURB CONSTRUCTION JOINTS. CURB REINFORCING STIRRUP BARS SHALL BE TURNED AS REQUIRED TO FIT FLARED ENDS.
 3. INDICATES AREA ALONG DECK AND UP FACE OF CURB FOR PLACEMENT OF 2 COATS OF POLYURETHANE MEMBRANE.
 4. POLYURETHANE MEMBRANE AND BLAST CLEANING SHALL BE INCLUDED IN THE UNIT PRICE BID FOR SHEET MEMBRANE WATERPROOFING.
 5. SHEET MEMBRANE WATERPROOFING SHALL EXTEND TO FACE OF CURB AS SHOWN.
 6. BLAST CLEAN 1 M FROM FACE OF CURB AND 0.075 M UP CURB FACE PRIOR TO PLACING MEMBRANE.

NOT TO SCALE

STATE OF VERMONT AGENCY OF TRANSPORTATION

Town Of	BRISTOL	Bridge No.	10
Highway No.	VT.116	Log Sta.	
		Surv. Sta.	

MISCELLANEOUS DETAILS
VT.116 BR.10 OVER NEW HAVEN RIVER

Designed By	G.COLGROVE	Drawn By	L.BULLOCK
Checked By	G.Colgrove	Bridge Design Supervisor	A.Portalupi
Date	5/99	Date	5/99

PROJECT	BRISTOL	PROJECT NO.	ER 021-1(13)
---------	---------	-------------	--------------