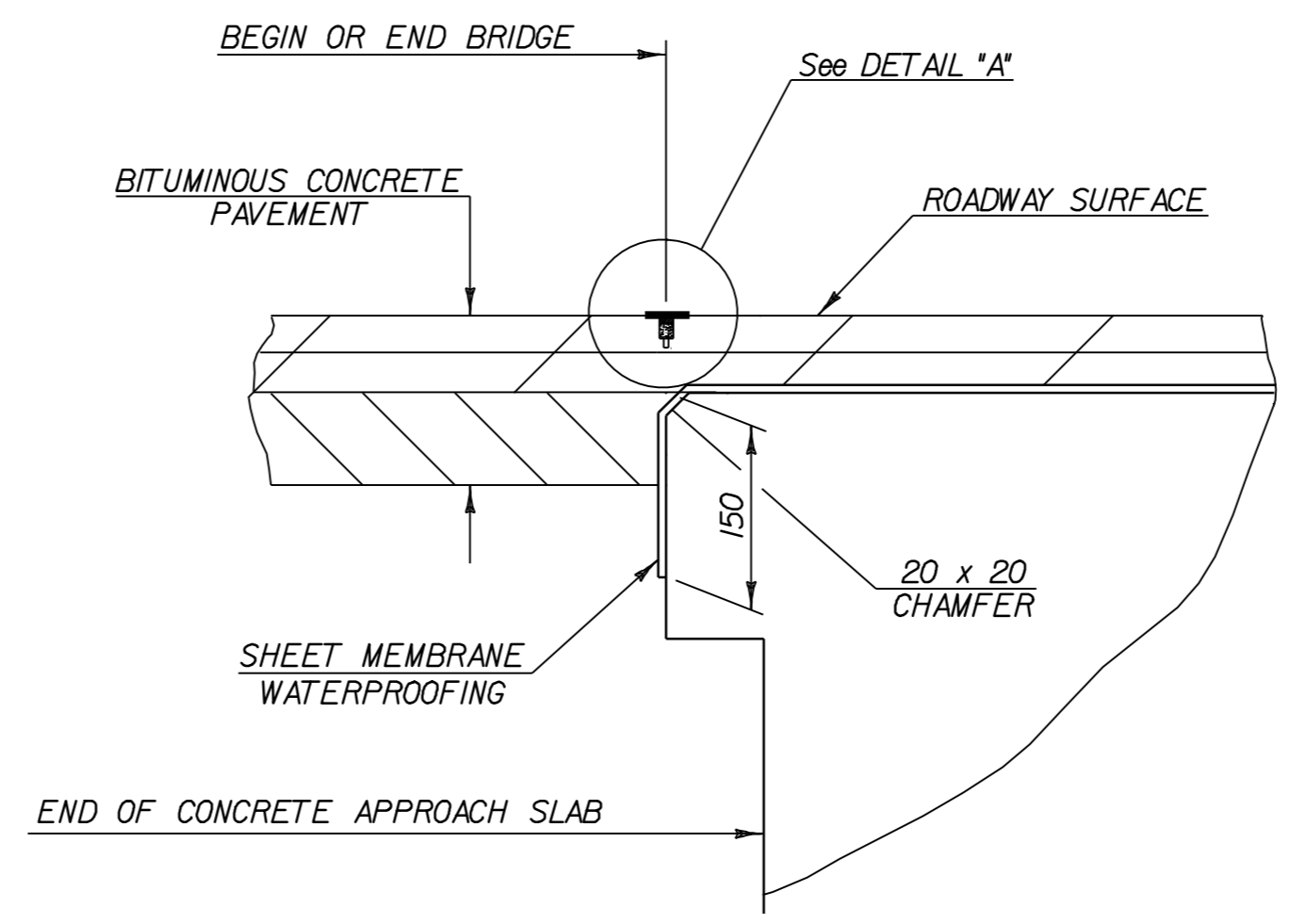
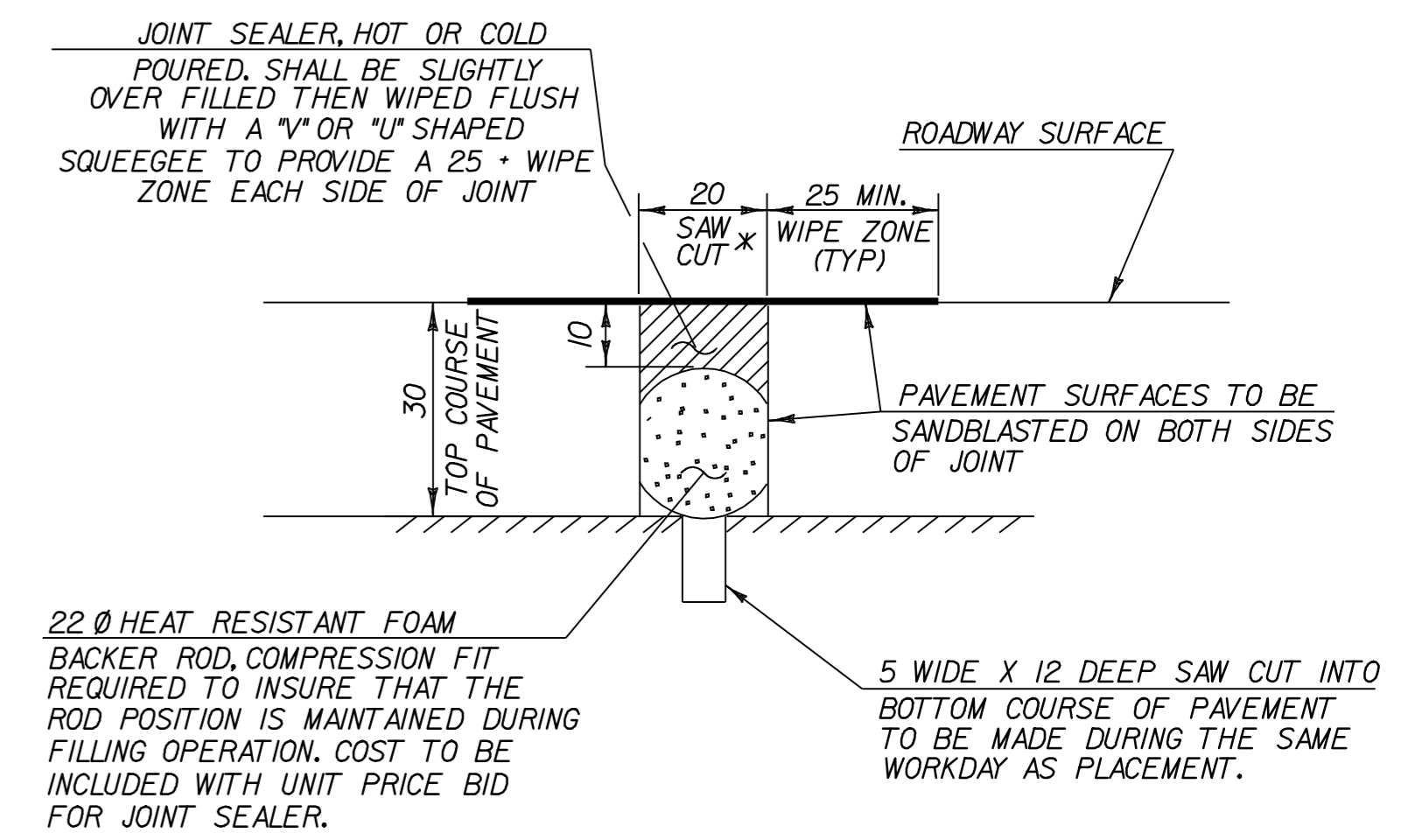


**SLEEPER SLAB DETAIL**  
SCALE = 1:20

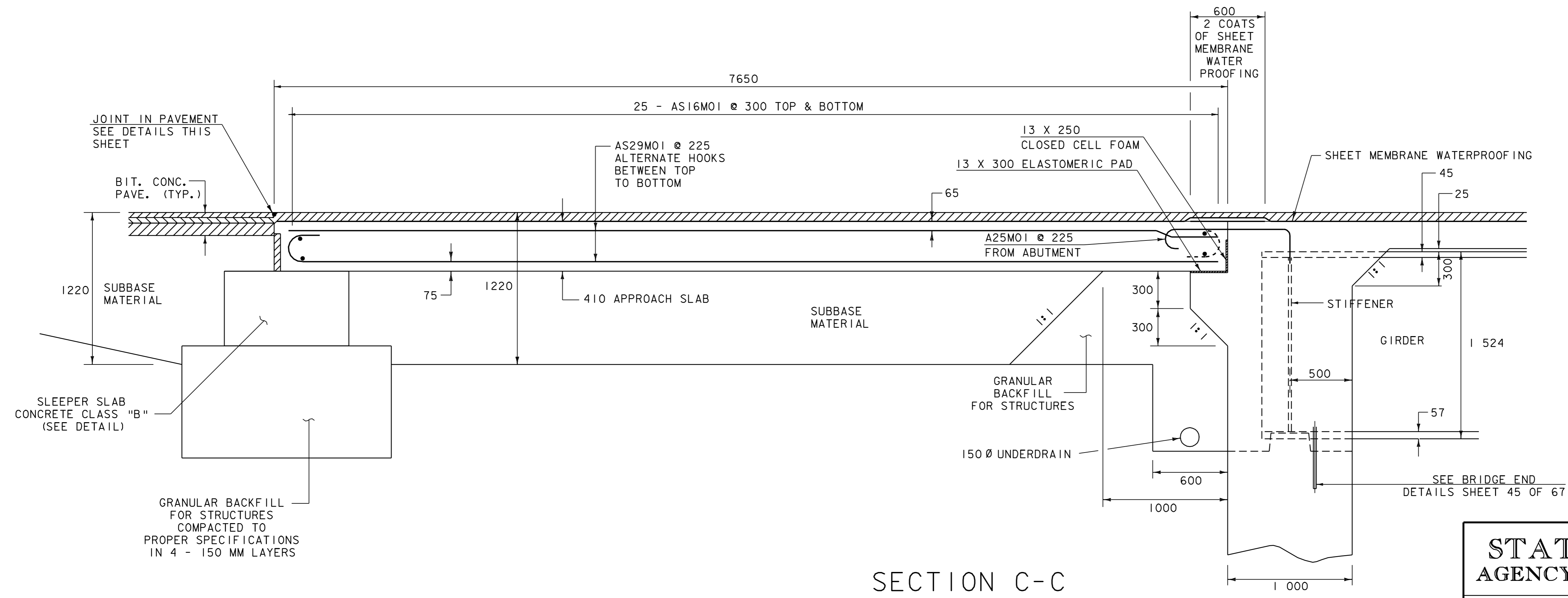


**DETAIL FOR JOINT IN PAVEMENT AND SHEET MEMBRANE AT END OF APPROACH SLAB**  
NTS



**DETAIL "A"**

\* JOINT IS TO BE LOCATED ACCURATELY BY STRING LING, OR OTHER MEANS, PRIOR TO PAVING, SO THAT THE SAW CUTS WILL BE MADE DIRECTLY OVER THE END OF CONCRETE DECK. JOINT SHALL BE CUT DRY IN A SINGLE PASS AND BE SEALED WITHIN 24 HOURS OR PRIOR TO EXPOSURE TO TRAFFIC. JOINT SHALL BE CLEANED PRIOR TO APPLYING THE JOINT SEALER. SEE VT. SPECIFICATION 524 AND SPECIAL PROVISIONS.



**SECTION C-C**  
SCALE = 1:20

**STATE OF VERMONT  
AGENCY OF TRANSPORTATION**

Town Of	BRISTOL	Bridge No.	10
Highway No.	VT.116	Log Sta.	
		Surv. Sta.	
<b>APPROACH SLAB DETAILS</b>			
<b>VT.116 BR.10 Over New Haven River</b>			
Designed By	G.COLGROVE	Drawn By	L.BULLOCK
Checked By	G.Colgrove	Bridge Design Supervisor	A.Portalupi
Date	5/99	Date	5/99
PROJECT	BRISTOL	PROJECT NO.	ER 021-1(13)
I.G.C. Info.	/str2/78f188/sf188as.dgn		sf188as31
Bridge Sheet No.		Sheet	41 of 67