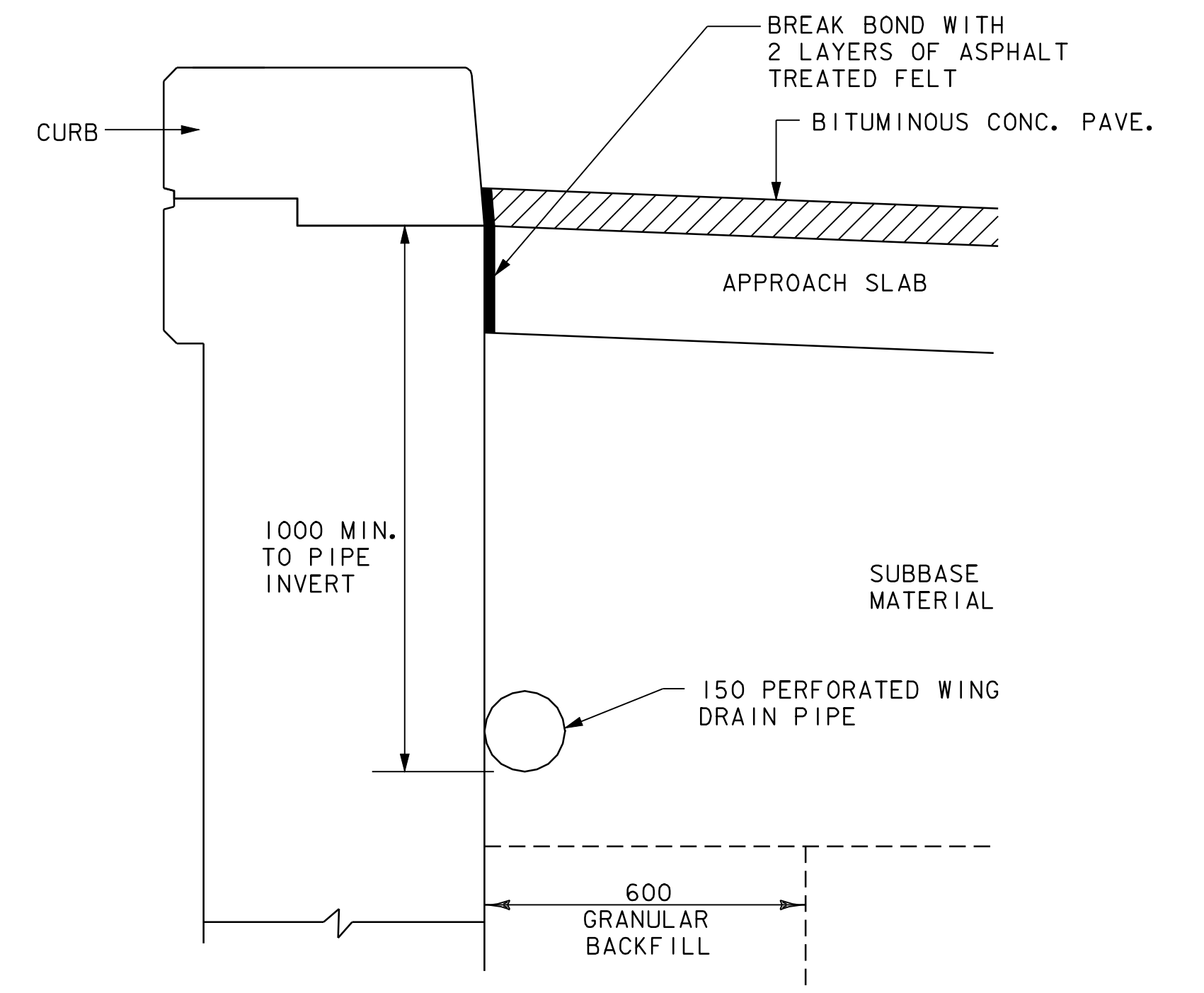


**APPROACH SLAB NO. 1 PLAN**  
SCALE = 1:40



**SECTION D-D**  
LOCATION OF DRAIN PIPE  
NOTE: SLAB TO BE PLACED DIRECTLY ON GRANULAR BACKFILL/SUBBASE MATERIAL  
SCALE = 1:10

**REINFORCING STEEL REQUIRED**

IN SLEEPER SLAB:  
30 AS16M02  
8 AS22M01  
8 AS29M02

IN SLAB  
50 AS16M01  
84 AS29M01

PREVIOUSLY SET UP FROM ABUTMENT  
42 A25M01

**STATE OF VERMONT  
AGENCY OF TRANSPORTATION**

Town Of	<i>BRISTOL</i>	Bridge No.	<i>10</i>
Highway No.	<i>VT.116</i>	Log Sta.	
		Surv. Sta.	
<b>APPROACH SLAB DETAILS</b>			
<i>VT.116 BR.10 Over New Haven River</i>			
Designed By	<i>G.COLGROVE</i>	Drawn By	<i>L.BULLOCK</i>
Checked By	<i>G.Colgrave</i>	Date	<i>5/99</i>
		Bridge Design Supervisor	<i>A.Portalupi</i>
		Date	<i>5/99</i>
PROJECT	<i>BRISTOL</i>	PROJECT NO.	<i>ER 021-K(13)</i>
I.G.C. Info.	<i>/str2/78f188/sf188as.dgn</i>		<i>sf188as1j</i>
Bridge Sheet No.		Sheet	<i>39 of 67</i>