

CONSTRUCT DRIVES
 I+155 LT - 3.7m WIDE GRAVEL
 I+180 RT ASKEW 58° - 4.5m WIDE PAVED
 I+186 LT - 5.4m WIDE GRAVEL

CONSTRUCT MAILBOX TURNOUT
 I+144.9 LT- I+151.7 LT
 I+174.6 LT- I+181.9 LT

CAST-IN-PLACE CEMENT CONCRETE CURB, TYPE A
 I+159.3 LT- I+173.6 LT
 I+191.0 LT- I+219.2 LT
 I+193.8 RT- I+220.0 RT

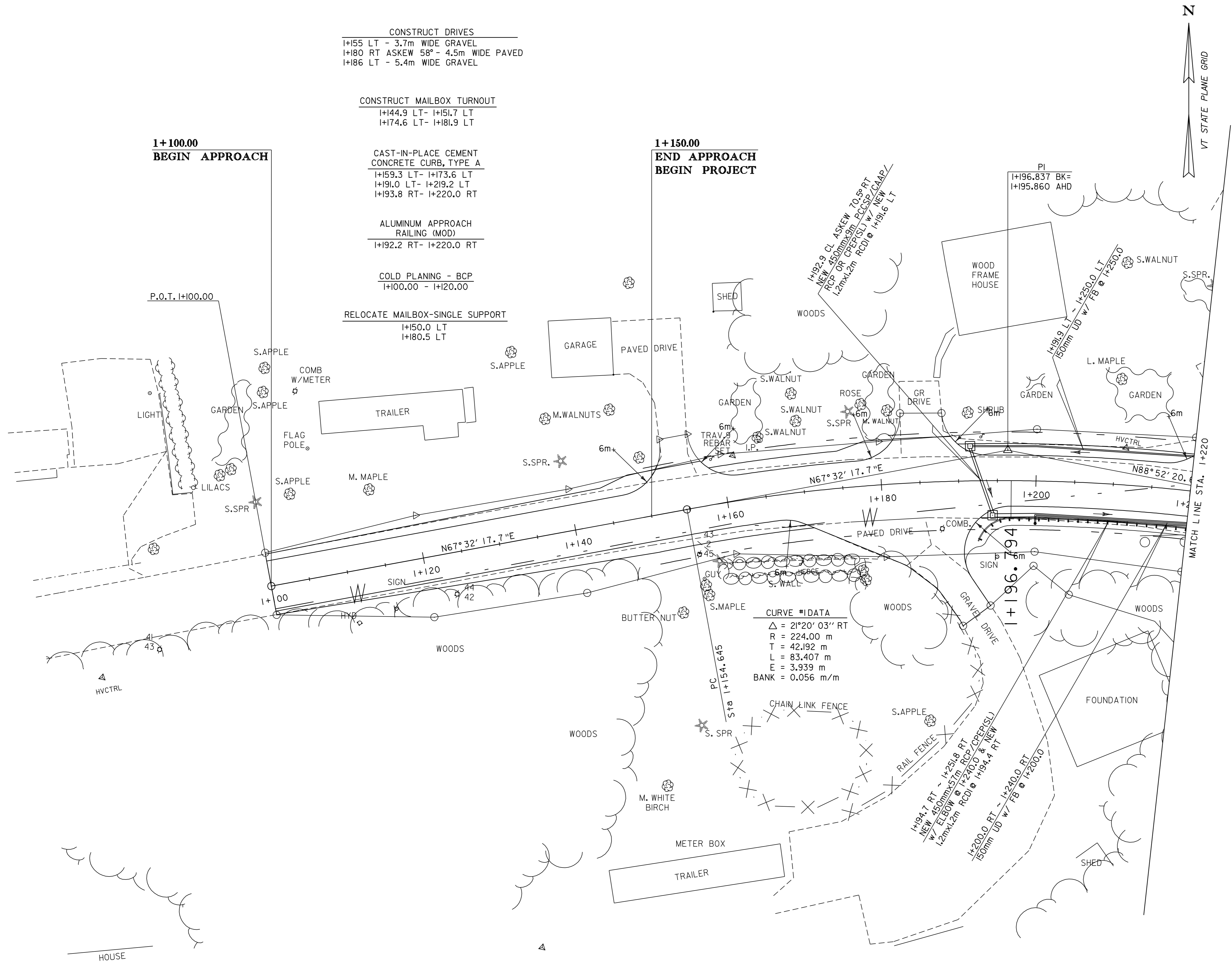
ALUMINUM APPROACH RAILING (MOD)
 I+192.2 RT- I+220.0 RT

COLD PLANING - BCP
 I+100.00 - I+120.00

RELOCATE MAILBOX-SINGLE SUPPORT
 I+150.0 LT
 I+180.5 LT

1+150.00
 END APPROACH
 BEGIN PROJECT

1+100.00
 BEGIN APPROACH



ROADWAY LAYOUT SHEET 1



DATUM	
VERTICAL	NAVD 88
HORIZONTAL	NAD83 (92)

PROJECT: BRISTOL	PROJECT NO.: ER 021-1(13)
DESIGN FILE NAME: /str2/78f188/df188bdr.dgn	PLOT DATE: 05-JAN-2007
IPARM FILE NAME: df188li	SURVEY DATE:
SURVEYED BY: L. ORVIS	DRAWN BY: STR2
SQUAD LEADER: A. PORTALUPI	SHEET: 17 OF 67
LAYOUT SHEET 1	