

### TRAV. 1

VTGS SURVEY DISK STAMPED

" WELLS "

N = 183662.5720  
E = 456383.3520  
Z = 0.0

TO REACH, FROM THE INTERSECTION OF RTE. 116, SA 2 (NORTH ST.), AND SA 3 (RIVER RD.) AT THE TRAFFIC LIGHT IN BRISTOL VILLAGE, GO EAST AND NORTH ALONG RTE 116 FOR 3.1 MI (5.0 KM) TO SITE OF MARK ON EAST SIDE OF ROAD.

STATION MARK IS A STATE OF VERMONT SURVEY MARK SET IN THE TOP OF A 30-CM DIAMETER CONCRETE MONUMENT FLUSH WITH GROUND SURFACE.

IT IS ABOUT 300 FT (91.4 M) SOUTH OF INTERSECTION OF RTE 116 AND RTE 17 EAST, 19 FT (5.8 M) EAST OF THE CENTERLINE OF RTE. 116, 7 FT (2.1 M) EAST OF THE EAST EDGE OF THE ROAD, 104 FT (31.7 M) SOUTH OF UTILITY POLE NO. 47, 1 FT (0.3 M) WEST OF A CARSONITE WITNESS POST

### TRAV. 2

VTGS SURVEY DISK STAMPED

" WELLS AZ MK "

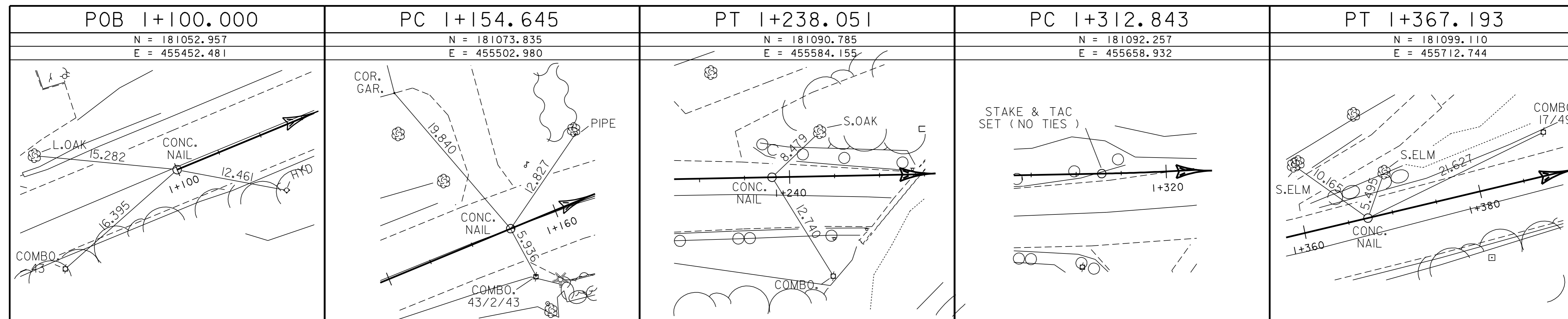
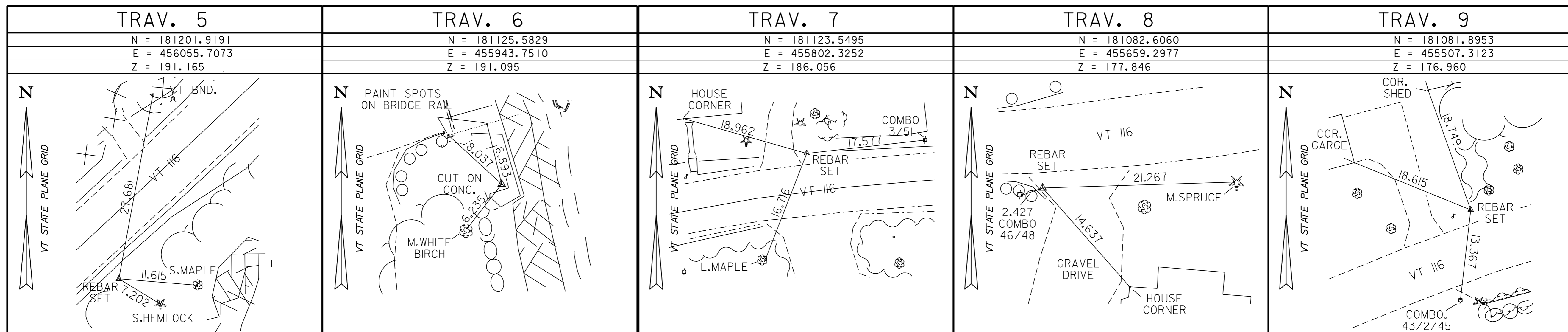
N = 182642.7880  
E = 456343.1370  
Z = 0.0

TO REACH, FROM THE INTERSECTION OF RTE. 116, SA 2 (NORTH ST.), AND SA 3 (RIVER RD.) AT THE TRAFFIC LIGHT IN BRISTOL VILLAGE, GO EAST AND NORTH ALONG RTE 116 FOR 2.5 MI (4.0 KM) TO SITE OF MARK ON WEST SIDE OF ROAD 0.6 MI (1.0 KM) SOUTH OF THE INTERSECTION OF RTE 17 EAST AND RTE 116 NORTH NEAR STARKSBORO.

STATION MARK IS A STATE OF VERMONT SURVEY MARK SET IN THE TOP OF A 30-CM DIAMETER CONCRETE MONUMENT FLUSH WITH GROUND SURFACE.

IT IS 18 FT (5.5 M) WEST OF THE CENTERLINE OF RTE 116, 7 FT (2.1 M) WEST OF THE WEST EDGE OF RTE 116, 65 FT (19.8 M) SOUTHWEST OF ELECTRIC POLE NO. 32, 144 FT (43.9 M) NORTHWEST OF ELECTRIC POLE NO. 31.

\* DESCRIPTION PROVIDED BY AGENCY OF TRANSPORTATION GEODETIC SURVEY UNIT.



\* ALIGNMENT STAKED ON 7-02-98

<b>DATUM</b>	
VERTICAL	NAVD 88
HORIZONTAL	NAD 83/92

PROJECT: <b>BRISTOL</b>	PROJECT NO.: ER 021-1(13)
DESIGN FILE NAME: str2/78f188/df188+1e.dgn	
IPARM FILE NAME: df188+1e.l	
SURVEYED BY: L. ORVIS	
SQUAD LEADER: Port alupi	
TIE SHEET 1 OF 2	
PLOT DATE: 05-JAN-2007	
SURVEY DATE: 9-97	
DRAWN BY: G. HITCHCOCK	
SHEET: 15 OF 67	