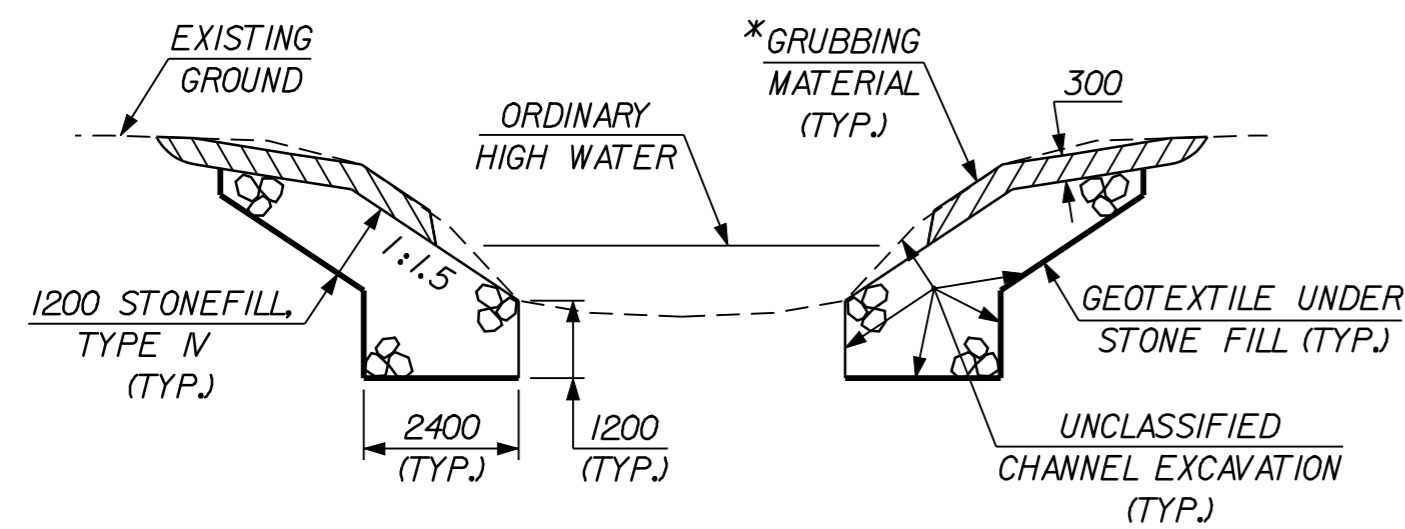
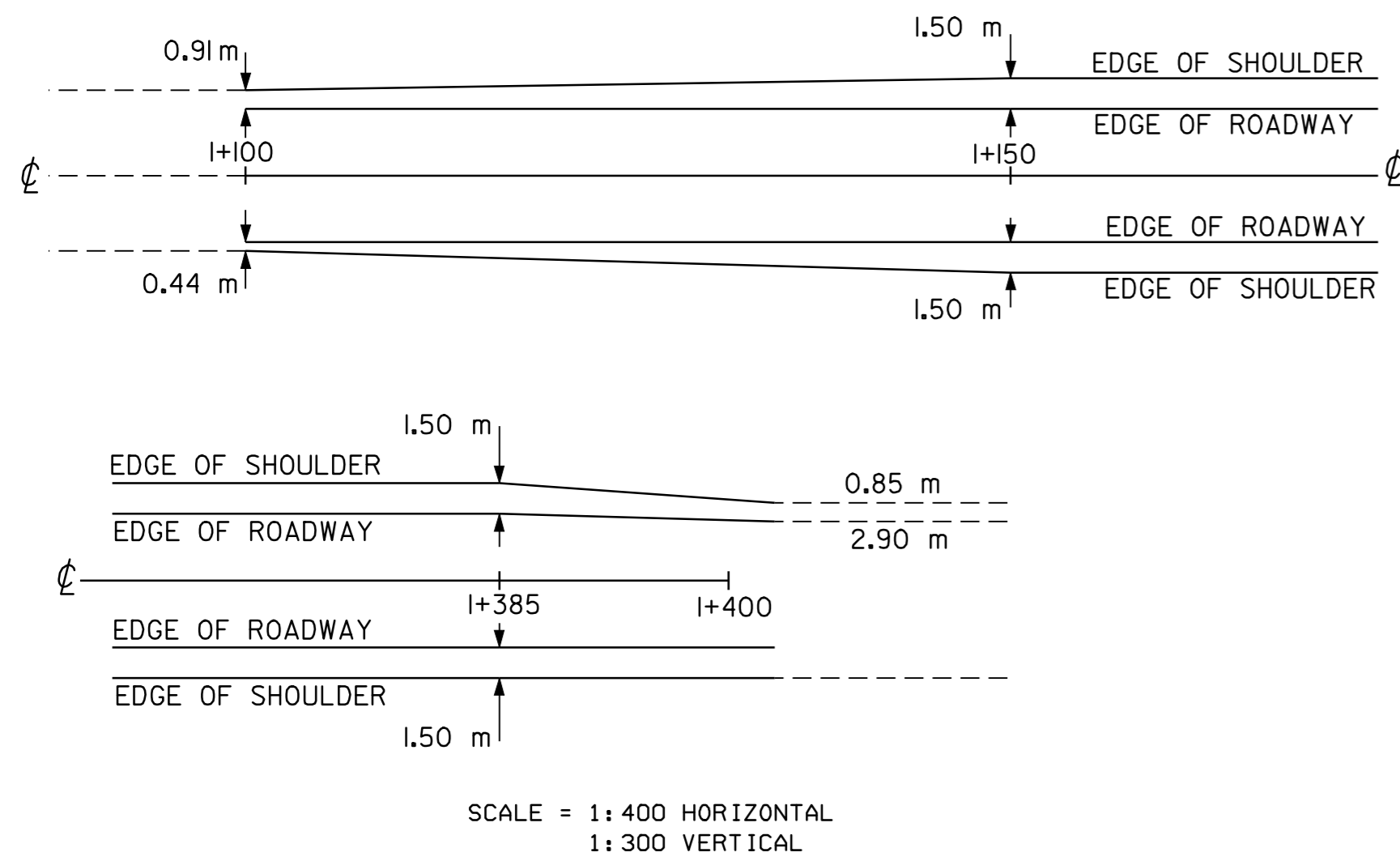
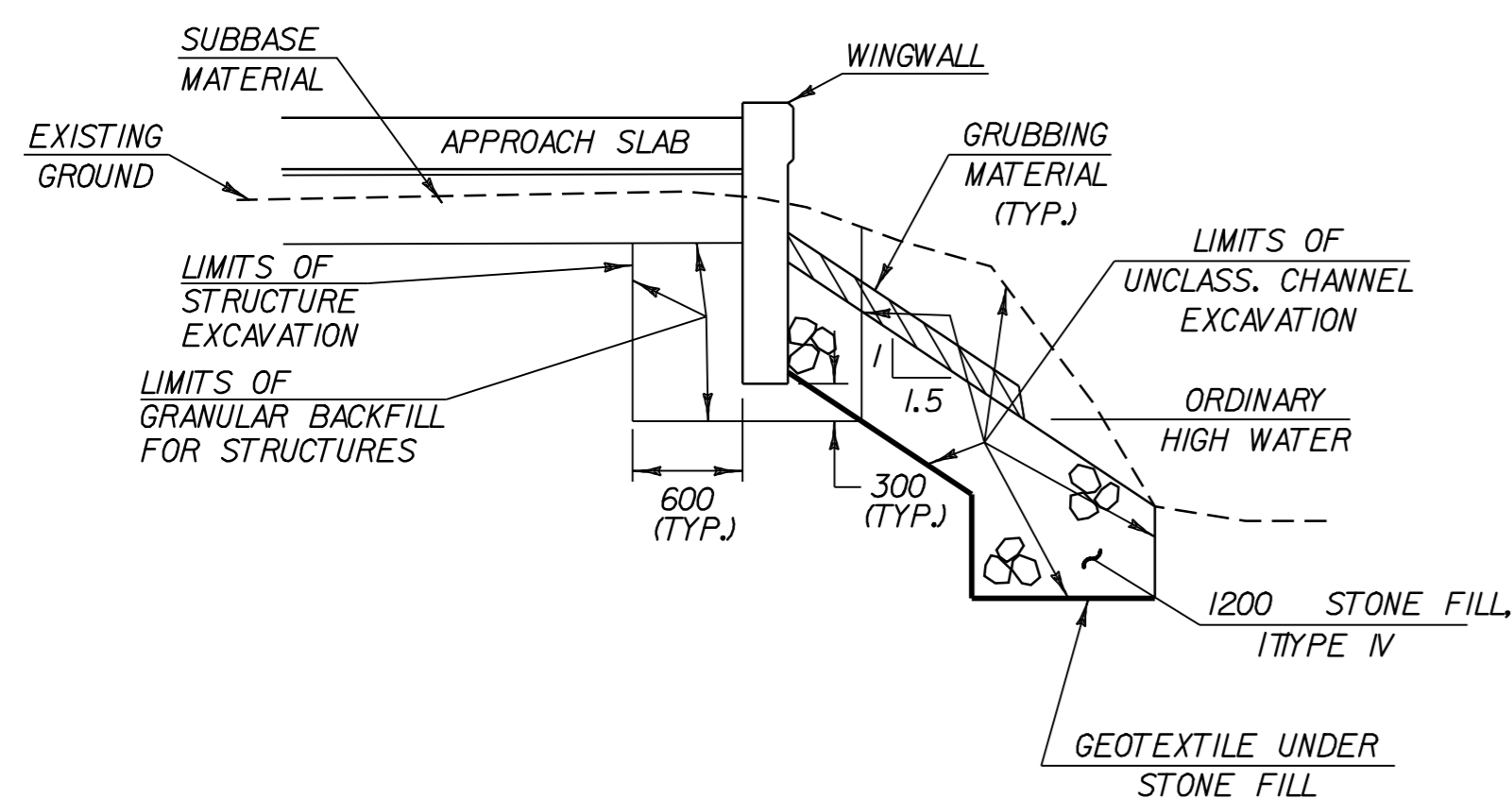


## SHOULDER WIDTH TRANSITIONS

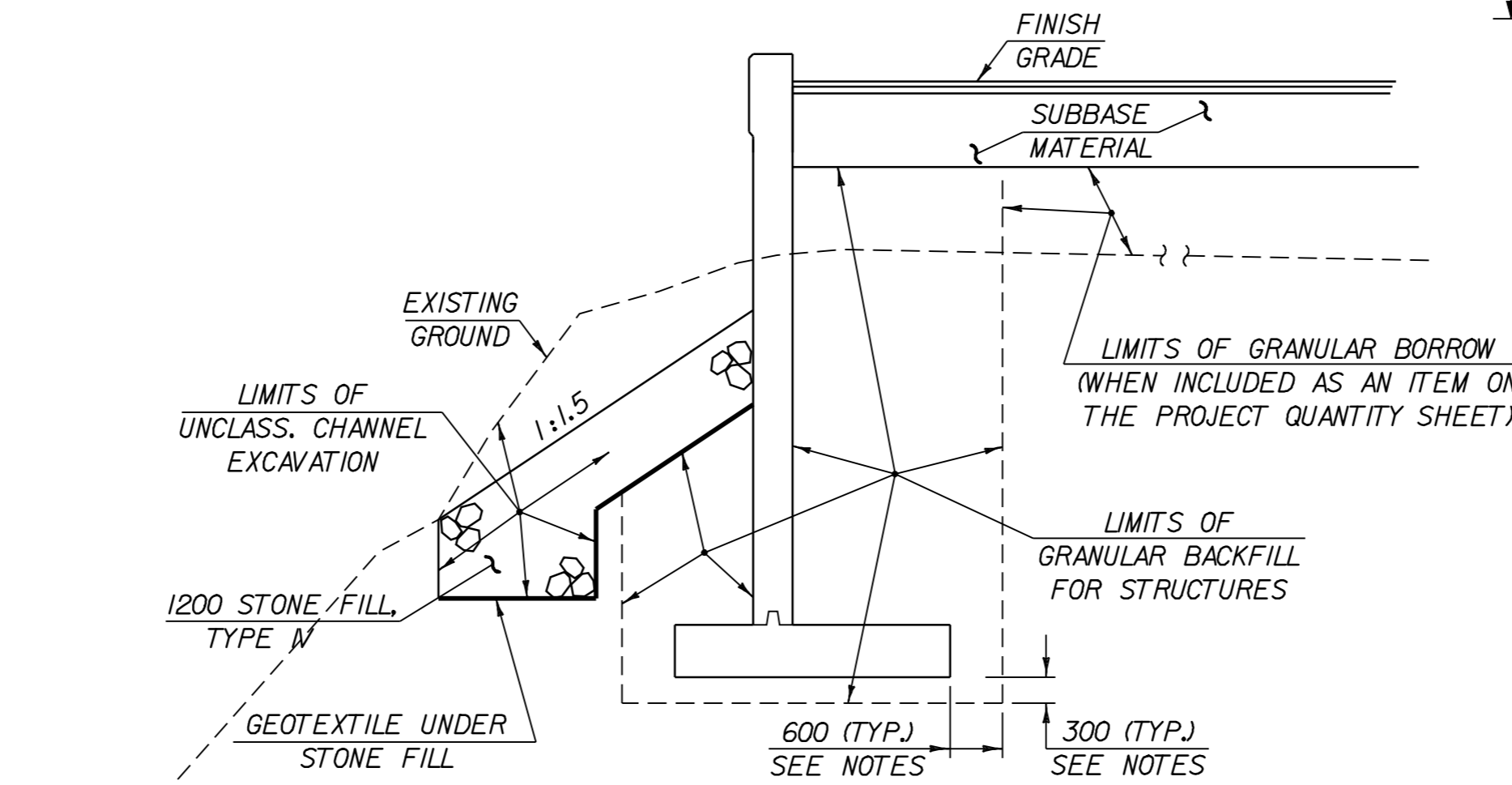


**TYPICAL CHANNEL SECTION**  
(NOT TO SCALE)

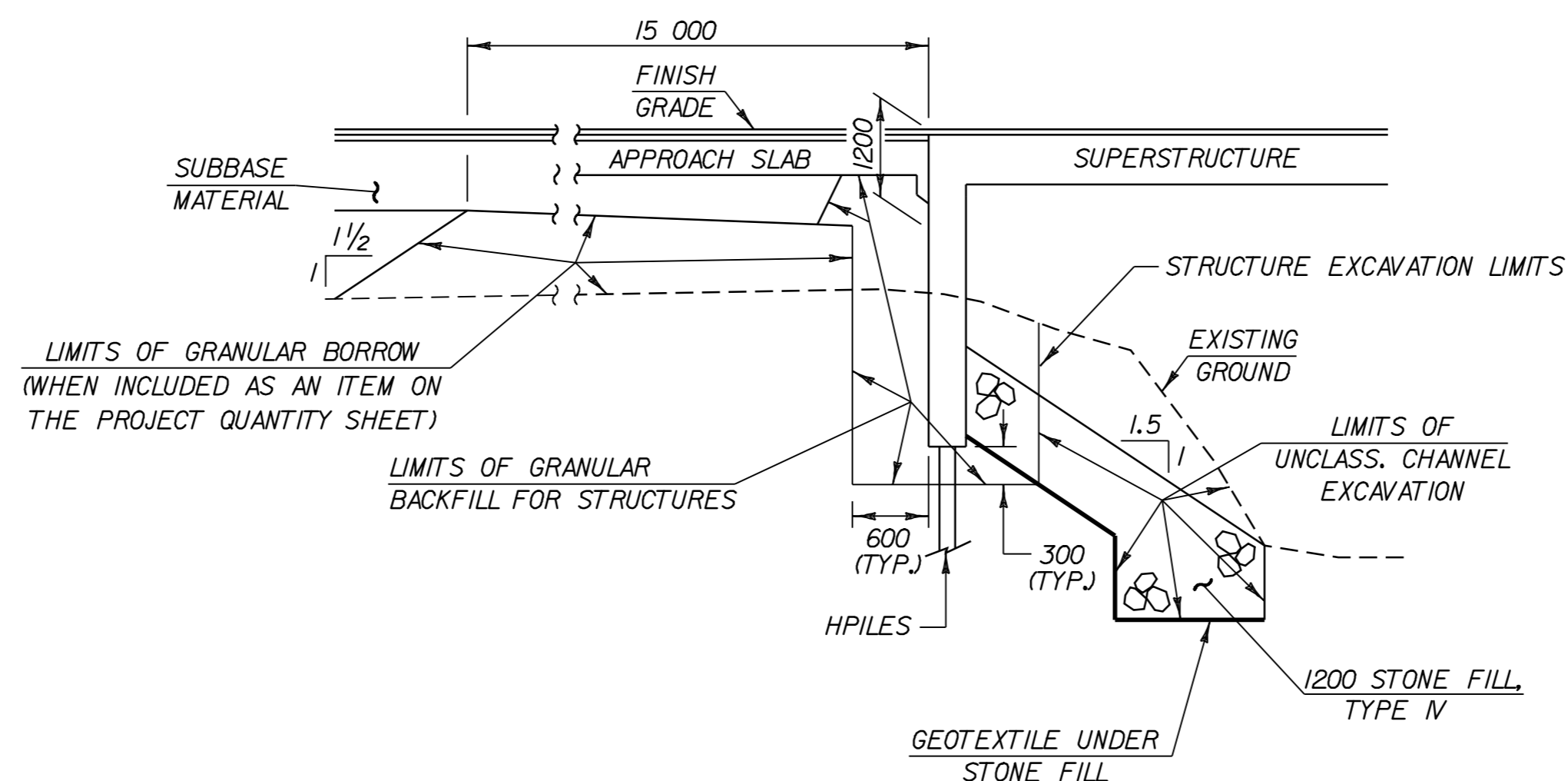
\*GRUBBING MATERIAL SHALL NOT BE PLACED ON THE STONE FILL IN THE AREA UNDER THE BRIDGE. WHENEVER CHANNEL SLOPE INTERSECTS ROADWAY SUBBASE, GRUBBING MATERIAL SHALL BEGIN AT THE BOTTOM OF SUBBASE.



**TYPICAL WINGWALL SECTION**  
(NOT TO SCALE)



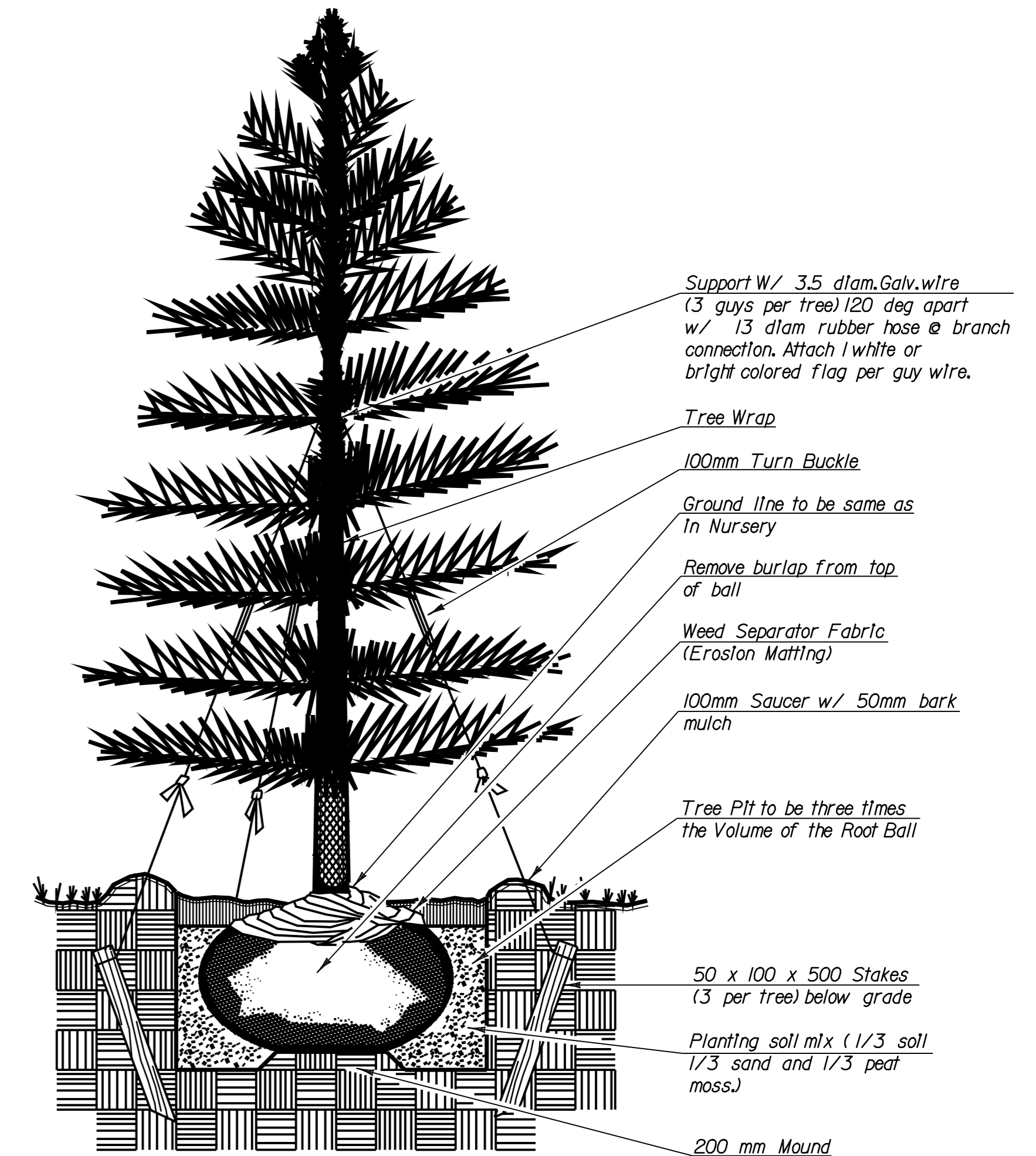
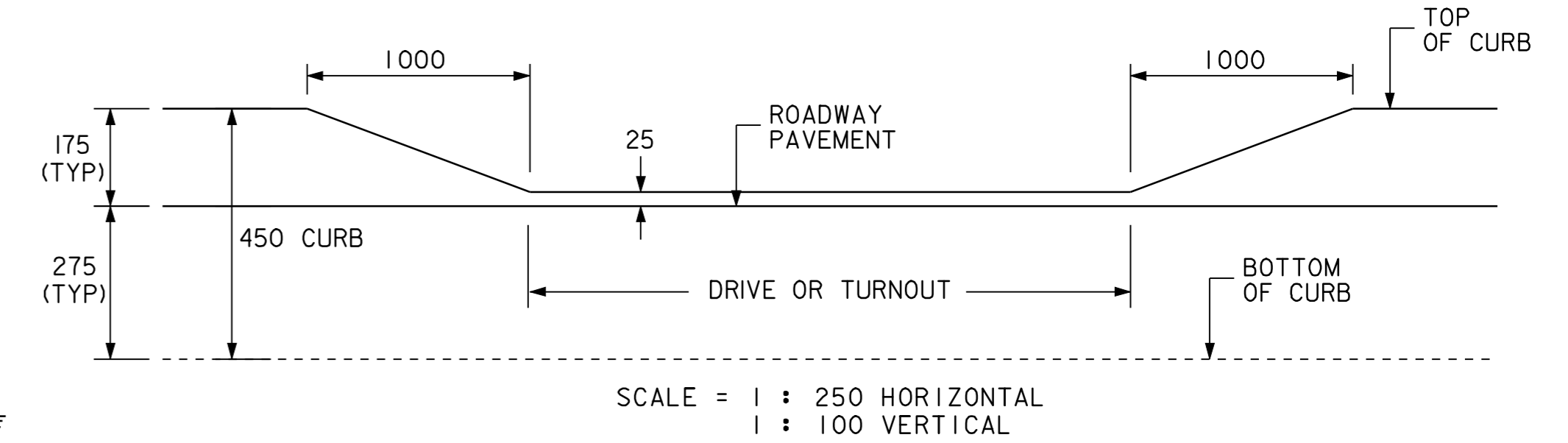
**TYPICAL RETAINING WALL SECTION**  
(NOT TO SCALE)



**TYPICAL ABUTMENT SECTION**  
(NOT TO SCALE)

NOTE: 300 UNDERCUT AS DETERMINED NECESSARY BY THE RESIDENT ENGINEER.

## CURB TRANSITION AT DRIVES & MAILBOX TURNOUTS



## Conifer Planting

(NOT TO SCALE)  
Use: Picea Glauca, B&B, 3.5m Ht.

PROJECT NAME: BRISTOL  
PROJECT NUMBER: ER 021-1(13)

FILE NAME: /str2/78f188/sf188pl.dgn  
PROJECT LEADER: PORTALUPI  
DESIGNED BY:  
sf188det.1

PLOT DATE: 05-JAN-2007  
DRAWN BY: L. Bullock  
CHECKED BY: G. Colgrove  
SHEET 3 OF 67