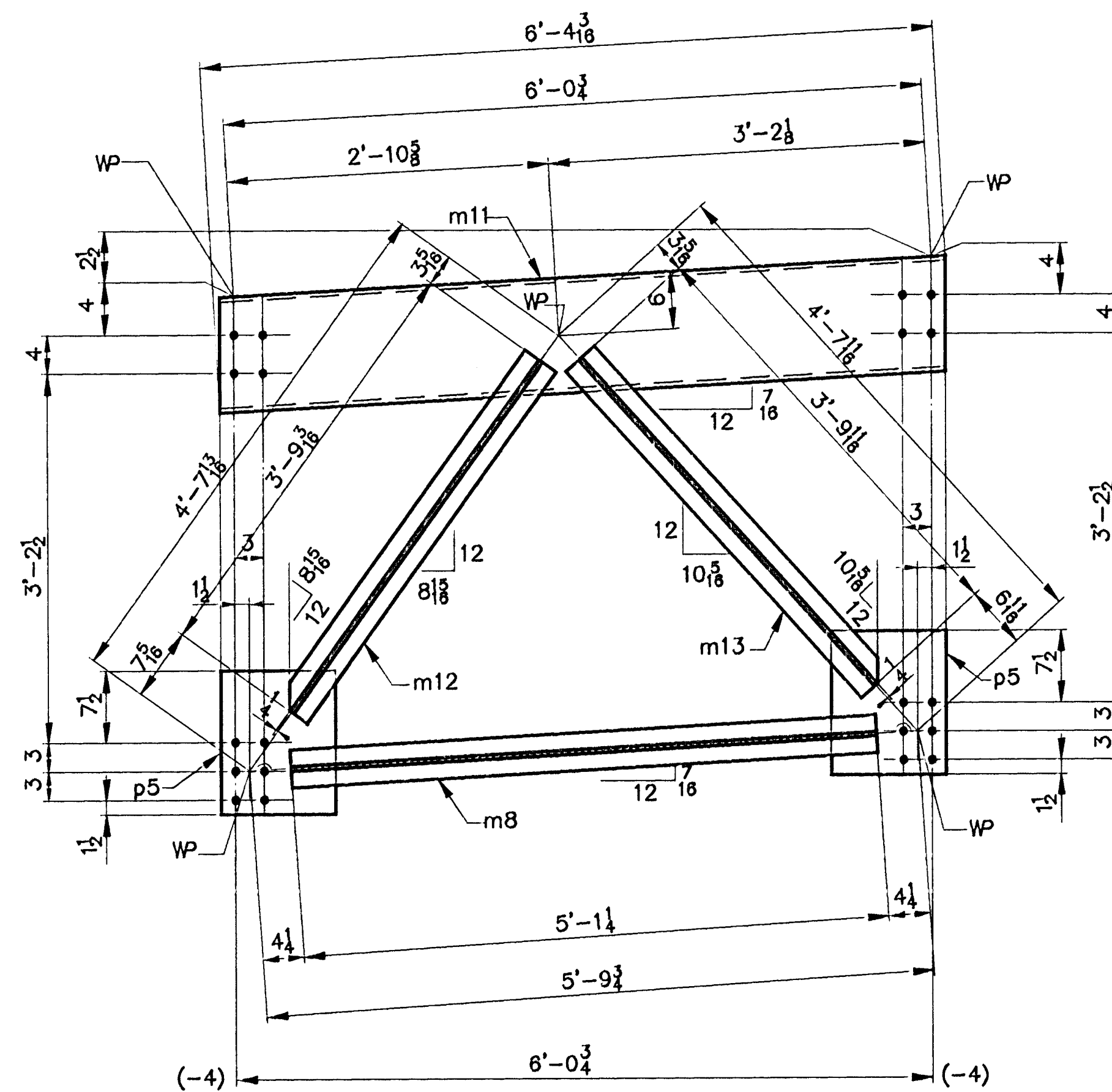
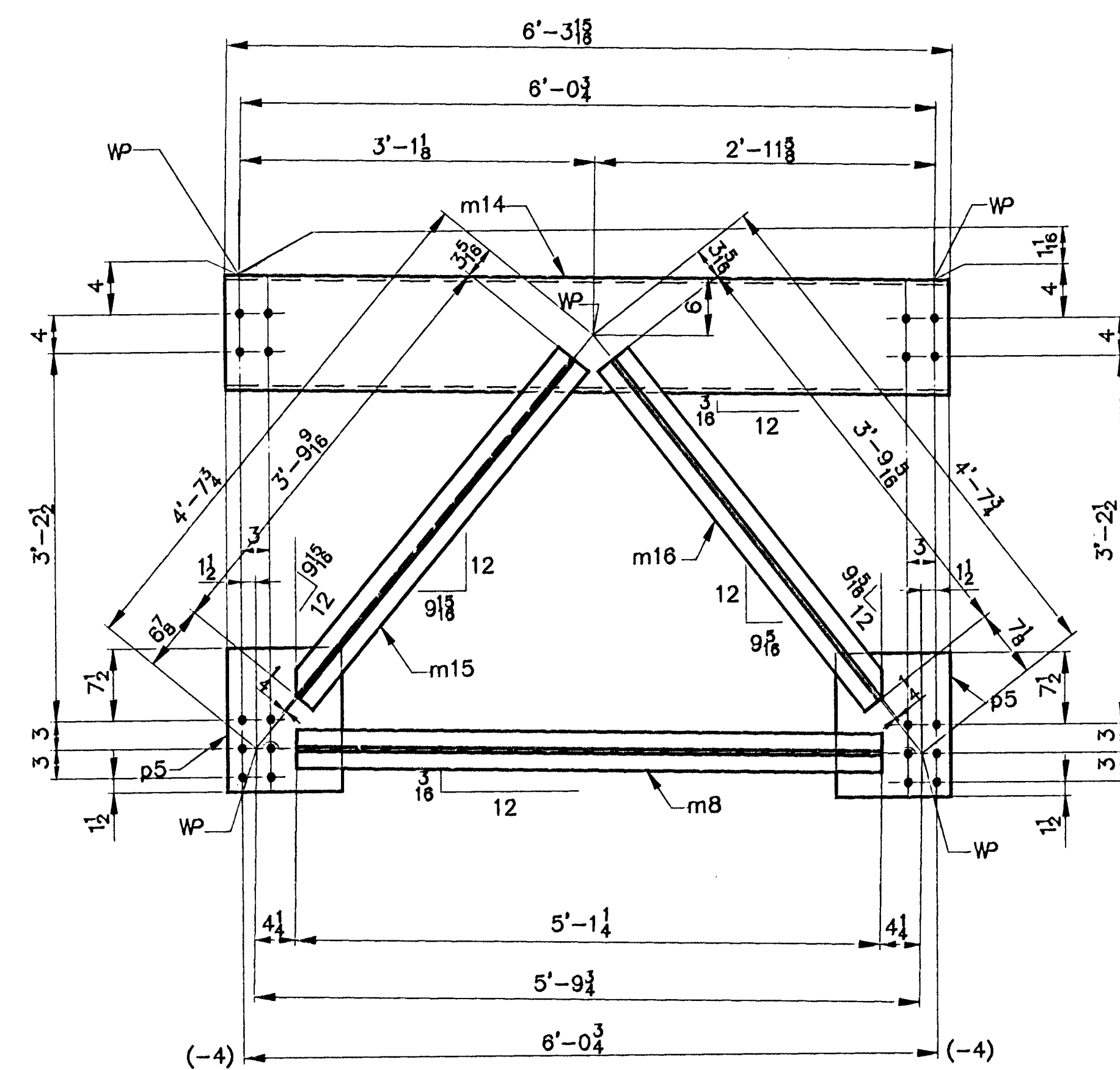


ONE ~ CROSS FRAME ~ F5 ECFSTR



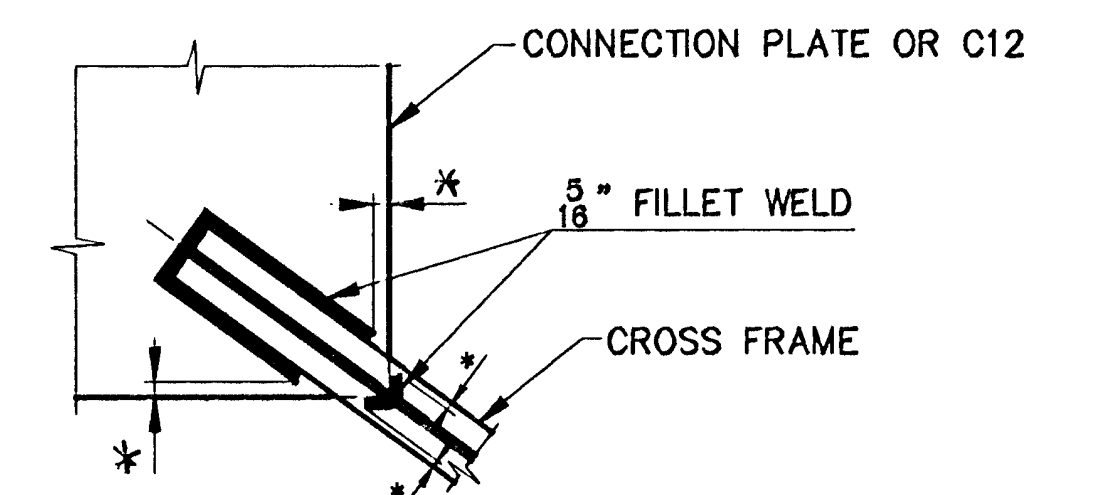
3 ~ CROSS FRAMES ~ F7 ECFSTR



2 ~ CROSS FRAMES ~ F9 ECFSTR

SHIP MARK		BILL OF MATERIAL				WORK ORDER NO.	DRAWING NO.	REV.
						15713	20-2	
		NO.	MARK	SHAPE	LENGTH	ITEM NO.	WT.	REMARKS
F5		ONE CROSS FRAMES						
L-4	1	m7	C12 x 25	6	4 1/2	5-1/2	2 3	159
L-4-A	1	m8	WT 5 x 9.5	5	1 1/4	5-1/2	2 4	48 %W10X19
	1	m9	WT 5 x 9.5	3	8 15/16	2	5	36
	1	m10	WT 5 x 9.5	3	9 15/16	2	5	36
L-4-B	2	p5	R 1/2 x 12	1	3	5-1/2	2 6	51 %R
F7		3 CROSS FRAMES						
L-4	3	m11	C12 x 25	6	4 3/8	5-1/2	2 3	476
L-4-A	3	m8	WT 5 x 9.5	5	1 1/4	5-1/2	2 4	145 %W10X19
	3	m12	WT 5 x 9.5	3	9 15/16	2	5	107
	3	m13	WT 5 x 9.5	3	9 11/16	2	5	109
L-4-B	6	p5	R 1/2 x 12	1	3	5-1/2	2 6	153 %R
F9		2 CROSS FRAMES						
L-4	2	m14	C12 x 25	6	3 15/16	5-1/2	2 3	316
L-4-A	2	m8	WT 5 x 9.5	5	1 1/4	5-1/2	2 4	97 %W10X19
	2	m15	WT 5 x 9.5	3	9 9/16	2	5	72
	2	m16	WT 5 x 9.5	3	9 5/16	2	5	72
L-4-B	4	p5	R 1/2 x 12	1	3	5-1/2	2 6	102 %R

1979 #



*NO WELD FOR 1/4" MIN., 1/2" MAX.
WELD TERMINATION DETAIL

STEEL: ASTM A36 A572 GR. A709 GR. 50W Unless Noted

WELDING ELECTRODE: E70 See Welding Proc. None

HOLES: 13/16 15/16 1-1/16 Unless Noted As Noted None

PAINT: None Shop Coat Galv. After Fab. Unless Noted

SPECIAL PAINT: NONE

SPECIAL CLEANING: Blast Clean SSPC SP10 None

ITEM NO. 506.55 BRIDGE NO. 44 PROJ. NO. BRS-RS 0113 (8)

TITLE: CROSS FRAMES

APPROVED: PRINT DIST. 5 10-14-96 APPR. 5 11-18-96 APPR. 0216 4-3-97 VAT

ORIG 12-3-94 FAB.

NE National Eastern Corporation
Plainville, Connecticut

JOB: U.S. ROUTE 5 OVER BLACK RIVER
SPRINGFIELD, VERMONT

CUSTOMER: WINTERSETT, INC.

DESIGNER: VERMONT AGENCY OF TRANSPORTATION

CHECKED 10/96 JH DRAWN 9/96 CSD

WORK ORDER NO. 15713 DRAWING NO. 20-2 REV.