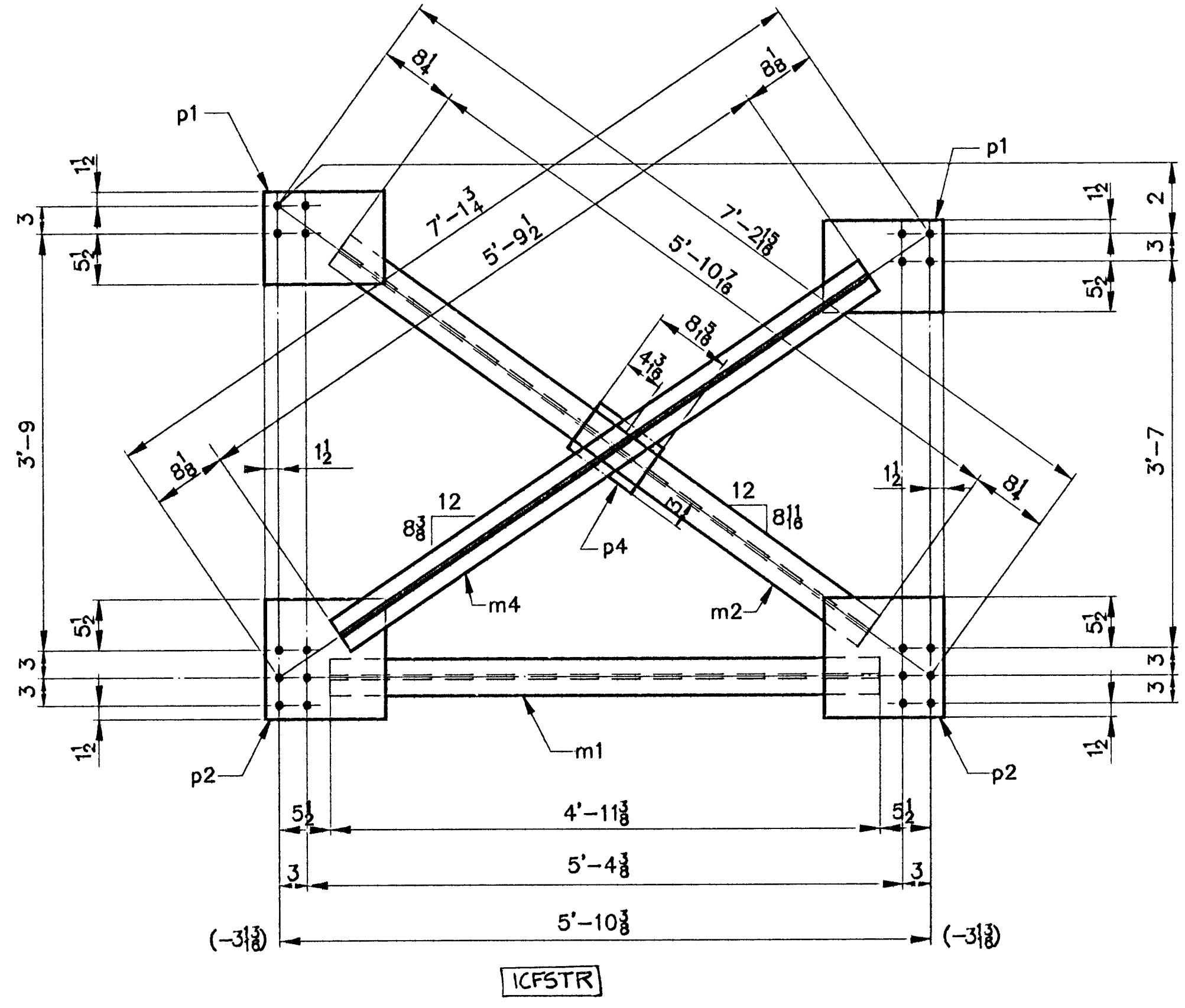
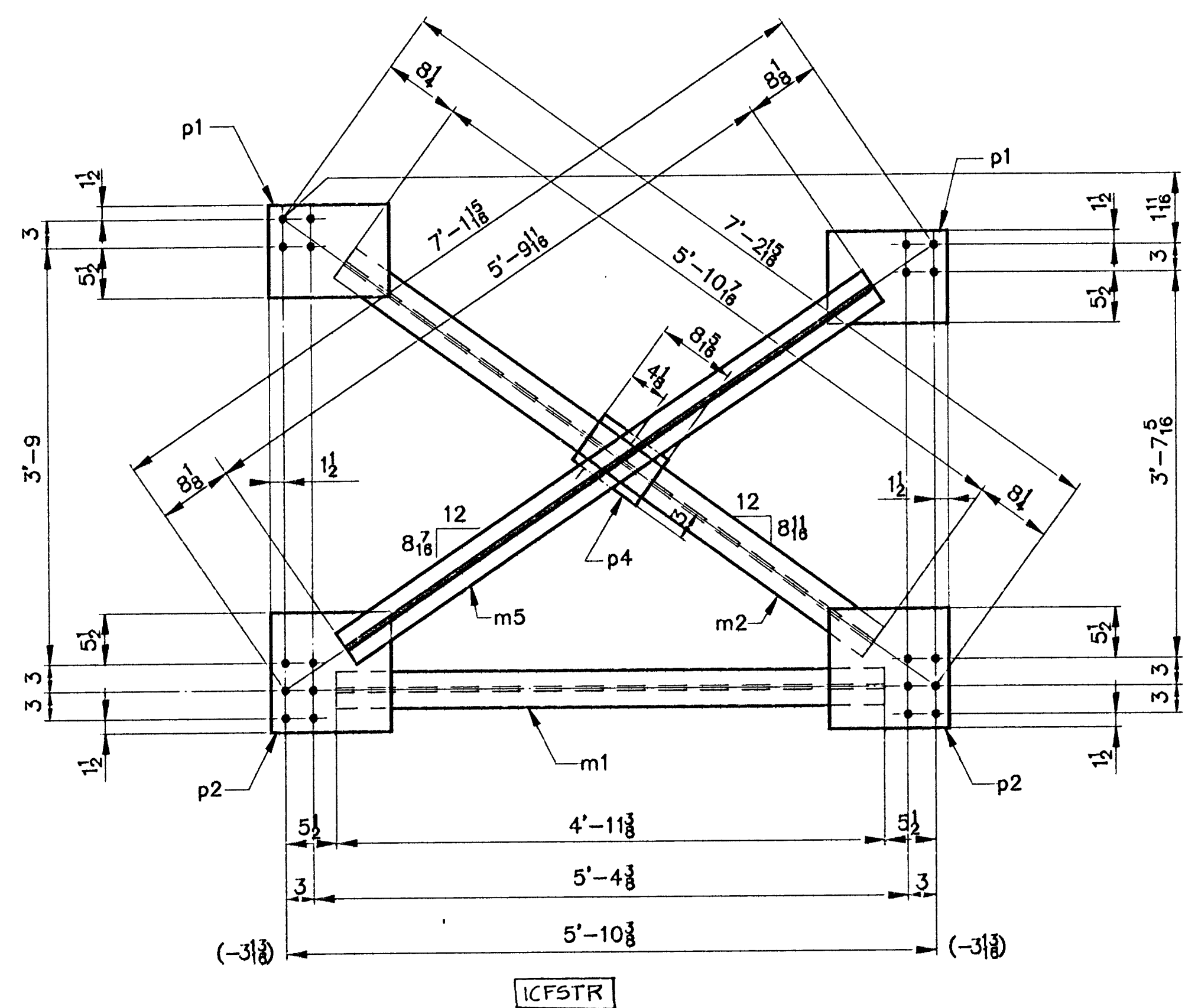


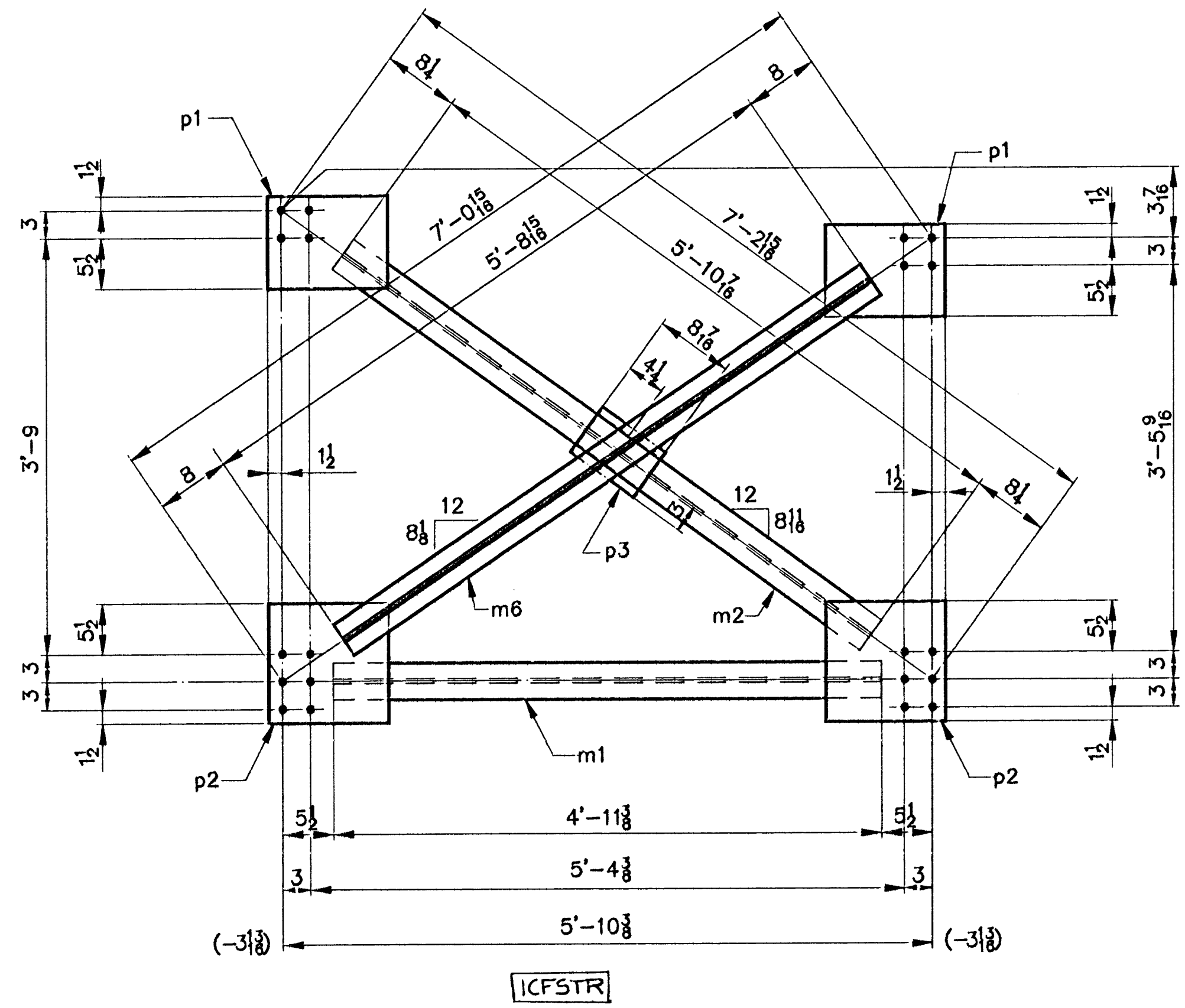
12 ~ CROSS FRAMES ~ F1



12 ~ CROSS FRAMES ~ F2

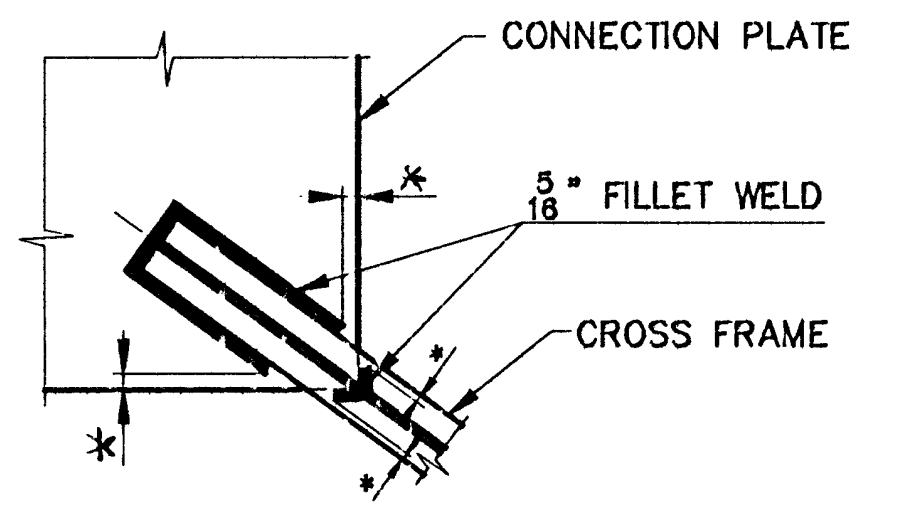


36 ~ CROSS FRAMES ~ F3



12 ~ CROSS FRAMES ~ F4

SHIP MARK	BILL OF MATERIAL				WORK ORDER NO.	DRAWING NO.	REV.
	NO.	MARK	SHAPE	LENGTH	15713	20-1	
F1	12		CROSS FRAMES				
Lot-3	12	m1	WT 5 x 9.5	4 11 3/8	5/16	2/7	564 1/2 W10x19
	12	m3	WT 5 x 9.5	5 9 1/8	1/2	2/8	650
	12	m2	WT 5 x 9.5	5 10 7/8	1/2	2/8	669
L-3-B	24	p1	R 1/2 x 10	1 0	5/16	2/10	408 1/2 F.R.
	24	p2	R 1/2 x 12	1 1	1/2	2/11	531
L-3-H	12	p3	R 1/2 x 6	0 8 7/8	5/16	2/9	86
F2	12		CROSS FRAMES				
Lot-3	12	m1	WT 5 x 9.5	4 11 3/8	5/16	2/7	564 1/2 W10x19
	12	m4	WT 5 x 9.5	5 9 1/2	1/2	2/8	600
	12	m2	WT 5 x 9.5	5 10 7/8	1/2	2/8	669
L-3-B	24	p1	R 1/2 x 10	1 0	5/16	2/10	408 1/2 F.R.
	24	p2	R 1/2 x 12	1 1	1/2	2/11	531
L-3-H	12	p4	R 1/2 x 6	0 8 7/8	5/16	2/9	85
F3	36		CROSS FRAMES				
Lot-3	36	m1	WT 5 x 9.5	4 11 3/8	5/16	2/7	1692 1/2 W10x19
	36	m5	WT 5 x 9.5	5 9 1/8	1/2	2/8	1986
	36	m2	WT 5 x 9.5	5 10 7/8	1/2	2/8	2007
L-3-B	72	p1	R 1/2 x 10	1 0	5/16	2/10	1225 1/2 F.R.
	72	p2	R 1/2 x 12	1 1	1/2	2/11	1592
L-3-H	36	p4	R 1/2 x 6	0 8 7/8	5/16	2/9	255
F4	12		CROSS FRAMES				
Lot-3	12	m1	WT 5 x 9.5	4 11 3/8	5/16	2/7	564 1/2 W10x19
	12	m6	WT 5 x 9.5	5 8 7/8	1/2	2/8	655
	12	m2	WT 5 x 9.5	5 10 7/8	1/2	2/8	669
L-3-B	24	p1	R 1/2 x 10	1 0	5/16	2/10	408 1/2 F.R.
	24	p2	R 1/2 x 12	1 1	1/2	2/11	531
L-3-H	12	p3	R 1/2 x 6	0 8 7/8	5/16	2/9	86
							17501 #



* NO WELD FOR 1/4" MIN., 1/2" MAX.

WELD TERMINATION DETAIL

STEEL: ASTM A36 A572 GR. 50 A709 GR. 50W Unless Noted

WELDING ELECTRODE: E70 See Welding Proc. None

HOLES: 13/16 15/16 1-1/16 Unless Noted As Noted None

PAINT: None Shop Coat Galv. After Fab. Unless Noted

SPECIAL PAINT: NONE

SPECIAL CLEANING: Blast Clean SSPC SP10 None

ITEM NO. 506.55 BRIDGE NO. 44 PROJ. NO. BRS-RS 0113 (8)

TITLE: CROSS FRAMES

APPROVED: _____

PRINT DIST. _____

ORIG 10-12-96 APPR. _____

5 12-3-96 FAB. _____

5 11-18-96 APP _____

ORIG 2-2-97 V.A.T. _____

National Eastern Corporation
Plainville, Connecticut

JOB: U.S. ROUTE 5 OVER BLACK RIVER
SPRINGFIELD, VERMONT

CUSTOMER: WINTERSETT, INC.

DESIGNER: VERMONT AGENCY OF TRANSPORTATION

WORK ORDER NO. 15713 DRAWING NO. 20-1 REV. _____

CHECKED 10/96 CSD

DRAWN 9/96 CSD