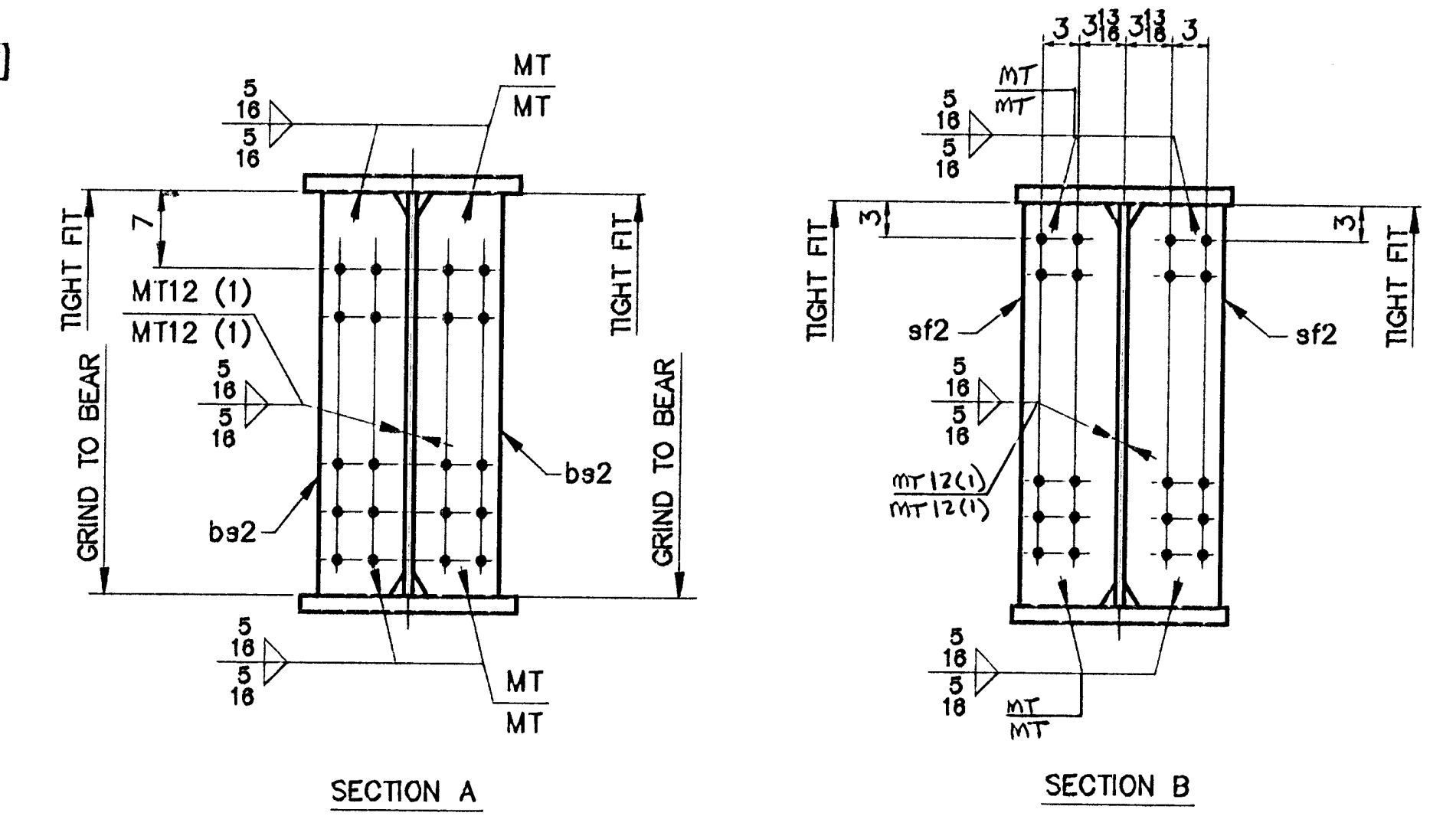


SHIP MARK		BILL OF MATERIAL			WORK ORDER NO.	DRAWING NO.	REV.
					15713	10-24	
NO.	MARK	SHAPE	LENGTH	ITEM NO.	WT.	REMARKS	
G4C	ONE	GIRDER					
L-2-L	1	wp1	1/8 x 60	103	10 1/8	3 13247	(CVN)
L-2-A	1	tf1	1/8 x 18	103	8 1/8	9 7149	(CVN)
L-2-B	1	bf1	1/8 x 18	103	10 3/8	5 7158	(CVN)
L-2-J	2	bs2	1/2 x 8 1/2	5	0	2 253	F2E
L-2-Cr	8	sf2	1/2 x 8	5	0	2 544	F1E
					28351 #		



- NOTES**
- FOR CAMBER DIAGRAM SEE DRAWING 10-6.
 - FOR GIRDER STANDARD DETAILS SEE DRAWING 10-3.
 - (CVN) DENOTES CHARPY TEST REQUIRED.

STEEL: ASTM A36 A572 GR. A709 GR. 50W Unless Noted

WELDING ELECTRODE: E70 See Welding Proc. None

HOLES: 13/16 15/16 1-1/16 Unless Noted As Noted None

PAINT: None Shop Coat Galv. After Fab. Unless Noted

SPECIAL PAINT: NONE

SPECIAL CLEANING: Blast Clean SSPC SP10 None

ITEM NO. 508.55 BRIDGE NO. 44 PROJ. NO. BRS-RS 0113 (8)

TITLE: GIRDER ~ G4C

APPROVED: _____

PRINT DIST. _____

5 10-14-96 APPR. _____

ORIG 12-3-96 FAB. _____

5 1-10-96 APP _____

ORIG 4-3-97 VAT _____

NE National Eastern Corporation
Plainville, Connecticut

JOB: U.S. ROUTE 5 OVER BLACK RIVER
SPRINGFIELD, VERMONT

CUSTOMER: WINTERSETT, INC.

DESIGNER: VERMONT AGENCY OF TRANSPORTATION

CHECKED 9/96 CSD

DRAWN 9/96 CSD

WORK ORDER NO. 15713 DRAWING NO. 10-24 REV.