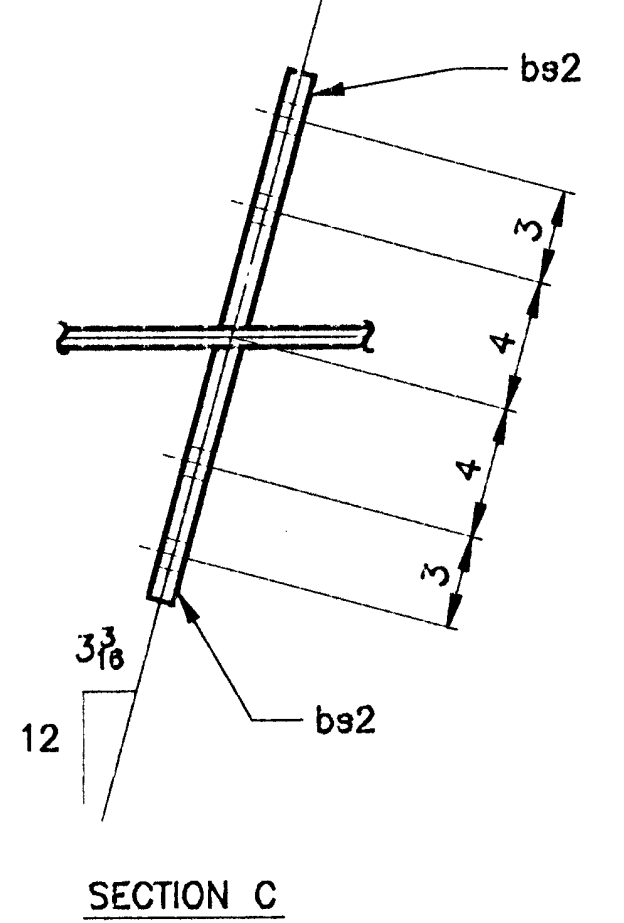
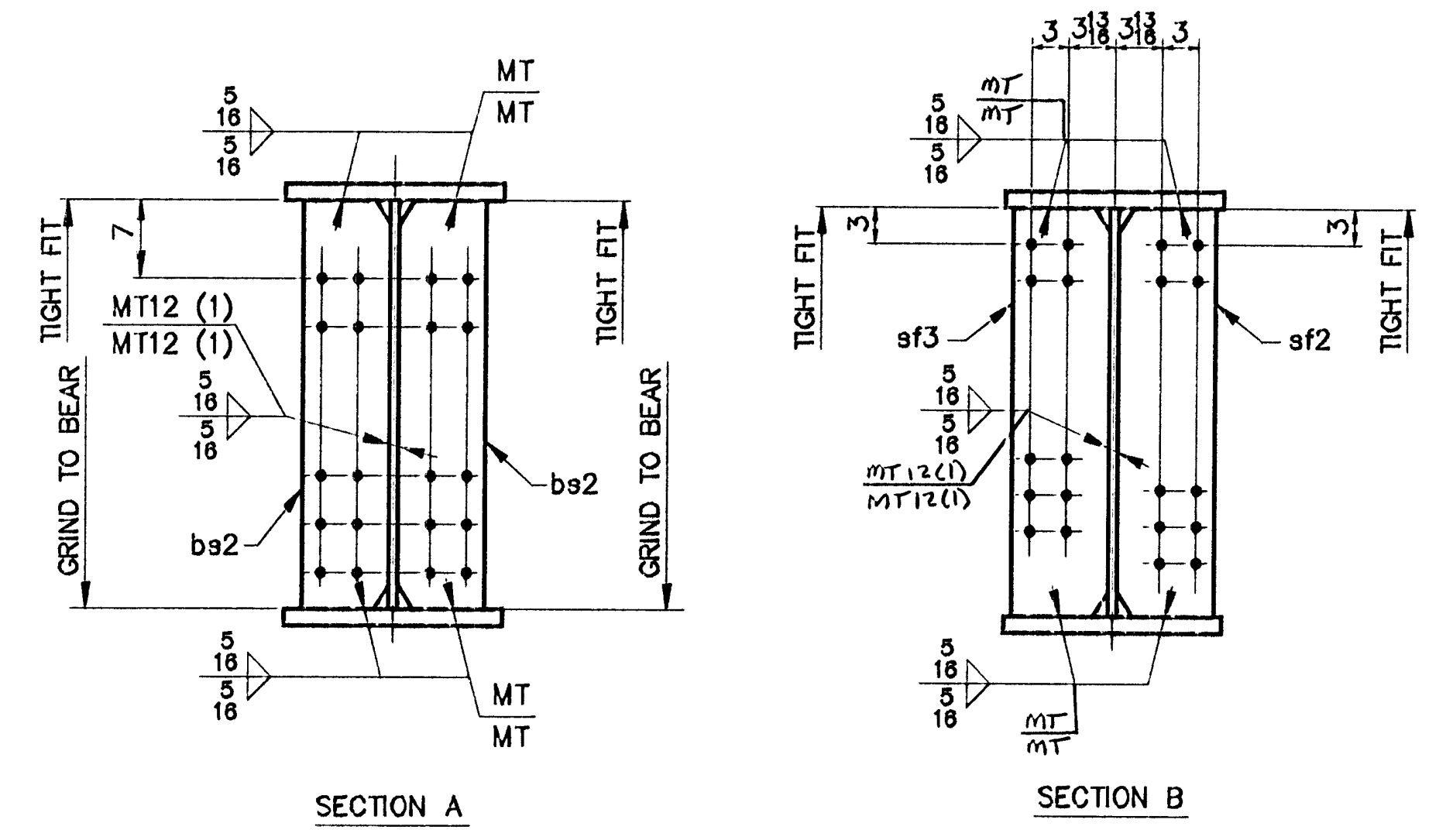


ONE ~ GIRDER ~ G2C
GIRDER



SHIP MARK		BILL OF MATERIAL				WORK ORDER NO.	DRAWING NO.	REV.
NO.	MARK	SHAPE	LENGTH	ITEM NO.	WT.	15713	10-22	
REMARKS								
G2C	ONE	GIRDER						
6-2	1	wp1	R 5/8 x 60	103	10 1/8	1	3	13247 (CVN)
6-2-A	1	tf1	R 1 1/8 x 18	103	8 1/8	1	9	7149 (CVN)
6-2-B	1	bf1	R 1 1/8 x 18	103	10 3/8	1	5	7150 (CVN)
6-2-J	2	bs2	R 7/8 x 8 1/2	5	0	2	1	253 F2E
6-2-G	4	sf2	R 1/2 x 8	5	0	2	2	272 F1E
6-2	4	sf3	R 1/2 x 8	5	0	2	2	272 F1E
						28351 #		



- NOTES**
- FOR CAMBER DIAGRAM SEE DRAWING 10-6.
 - FOR GIRDER STANDARD DETAILS SEE DRAWING 10-3.
 - (CVN) DENOTES CHARTY TEST REQUIRED.

STEEL: ASTM A36 A572 GR A709 GR 50W Unless Noted

WELDING ELECTRODE: E70 See Welding Proc. None

HOLES: 13/16 15/16 1-1/16 Unless Noted As Noted None

PAINT: None Shop Coat Galv. After Fab. Unless Noted

SPECIAL PAINT: NONE

SPECIAL CLEANING: Blast Clean SSPC SP10 None

ITEM NO. 508.55 BRIDGE NO. 44 PROJ. NO. BRS-RS 0113 (B)

TITLE: GIRDER ~ G2C

APPROVED: _____

PRINT DIST. _____

ORIG 12-3-90 APPR. 5 11-18-96 APPR. 5 11-18-96 APPR. 02-16-97 VAT

National Eastern Corporation
Plainville, Connecticut

JOB: U.S. ROUTE 5 OVER BLACK RIVER
SPRINGFIELD, VERMONT

CUSTOMER: WINTERSETT, INC.

DESIGNER: VERMONT AGENCY OF TRANSPORTATION

WORK ORDER NO. 15713 DRAWING NO. 10-22 REV.

CHECKED 9/96 CSD DRAWN 9/96 CSD