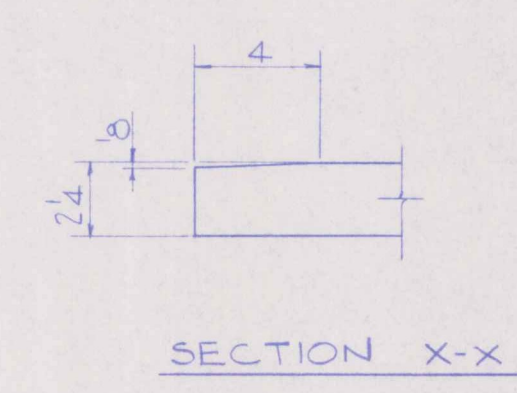
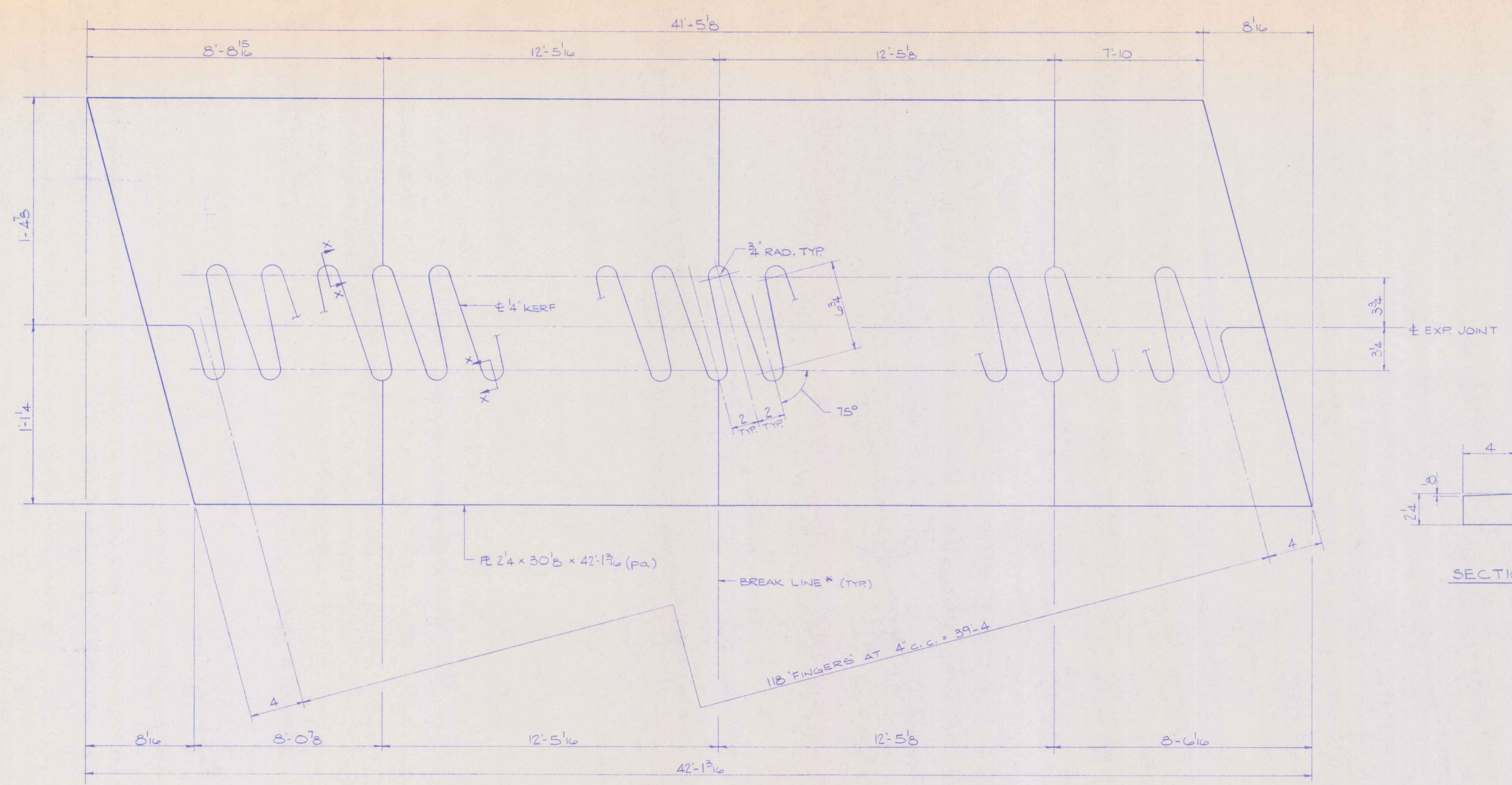
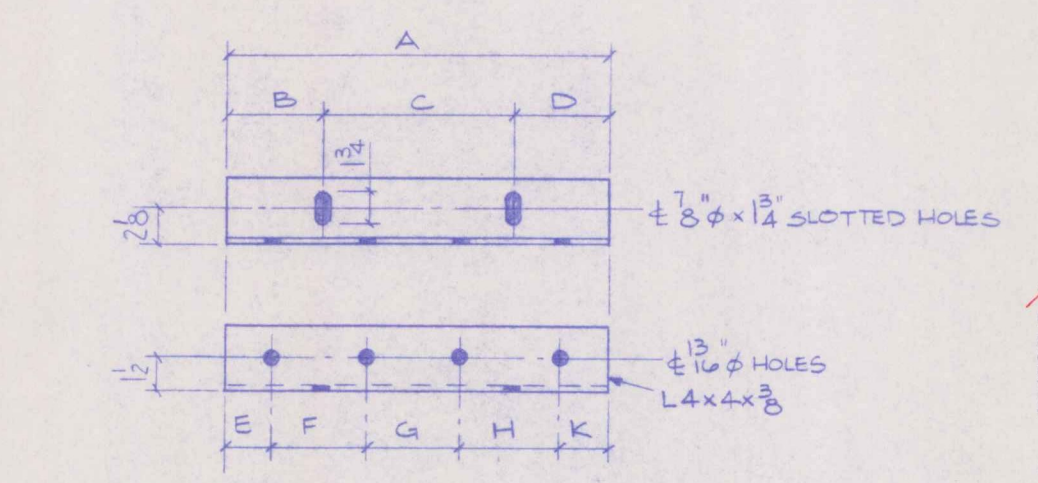
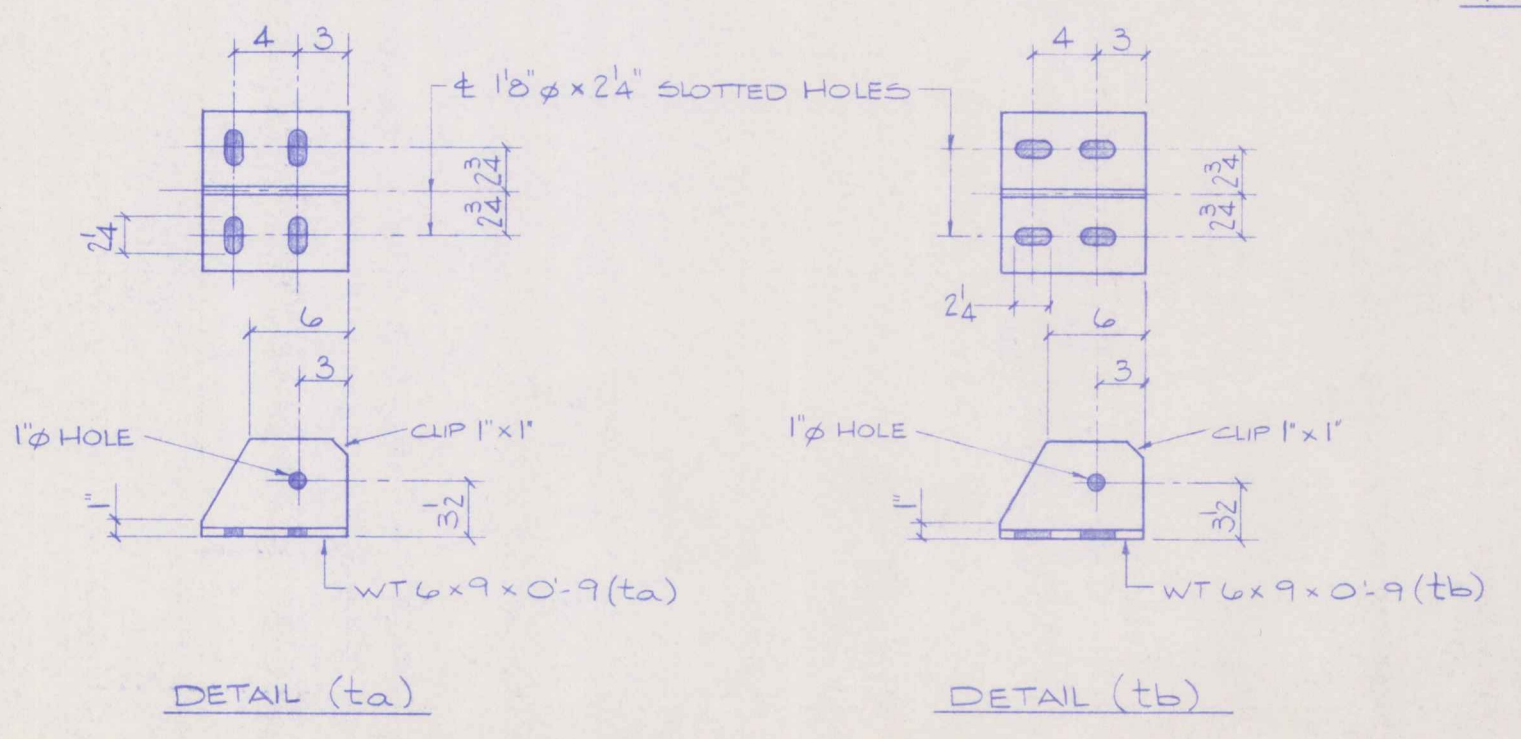


LOG NO.
9029



*: PE BREAKS TO BE CUT AFTER CONTINUOUS SCROLL CUT IS MADE.

FINGER PLATE CUTTING DETAIL



MK.	QTY.	A	B	C	D	E	F	G	H	K
cut	1	12'-6 1/2"	5'-3 1/8"	9	4'-2	3'-10 1/2"	4'-2	4'-2	4'-2	7'-2
an	1	1'-0 1/4"	4'-1 1/8"	9	4'-2	2'-10 1/2"	4'-2	4'-2	4'-2	7'-2
ap	1	1'-5 1/4"	2'-5 1/8"	12	2'-5 1/8"	1'-10 1/2"	4'-2	4'-2	4'-2	7'-2
ar	1	1'-5 1/8"	2'-5 1/8"	12	2'-5 1/8"	2'-10 1/2"	4'-2	4'-2	4'-2	7'-2

No Exception Taken Make Corrections Now!
 Fixing and Reinstall Not Acceptable
 Reviewed only for general conformance with the design and specifications. The contractor is responsible for confirming and controlling all dimensions and dimensions and performing the work in a satisfactory manner.
 DATE: 2/1/97 BY: s.p.

OUT FOR APPROVAL	2/6/97									
OUT FOR APPROVAL	2/9/97									
ISSUED TO SHOP										
FIELD & OFFICE										
REV.	REMARKS	DATE	DWN	CHK	APP	Q.A.	NO.	DIA.	LG	
	PROJECT NO. BR5-RS 0/13 (S)									
MATERIAL:	ELECTRODES	GENERAL NOTES: SEE								
HOLES:	SHOP BOLTS									
SURFACE PREP. & PAINT:	SEE NOTES DRG. NO. 2									
DESCRIPTION:	FINGER JOINT DETAILS	DRG.								
JOB:	STATE OF VERMONT A.O.T. BRIDGE No. 44 U.S. ROUTE 5 OVER BLACK RIVER TOWN OF SPRINGFIELD	CH								
CUSTOMER:	WINTERSET, INC.	APP								
BRIDGE & STEEL SERVICES		4								
5 INDUSTRY ROAD SOUTH PORTLAND, ME 04106		3								
PHONE (207) 874-2017 FAX (207) 874-8998										