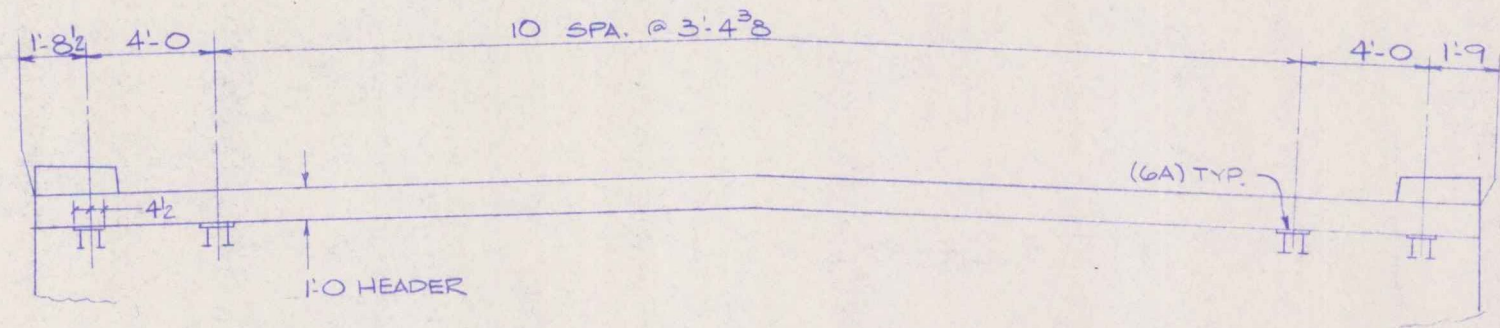
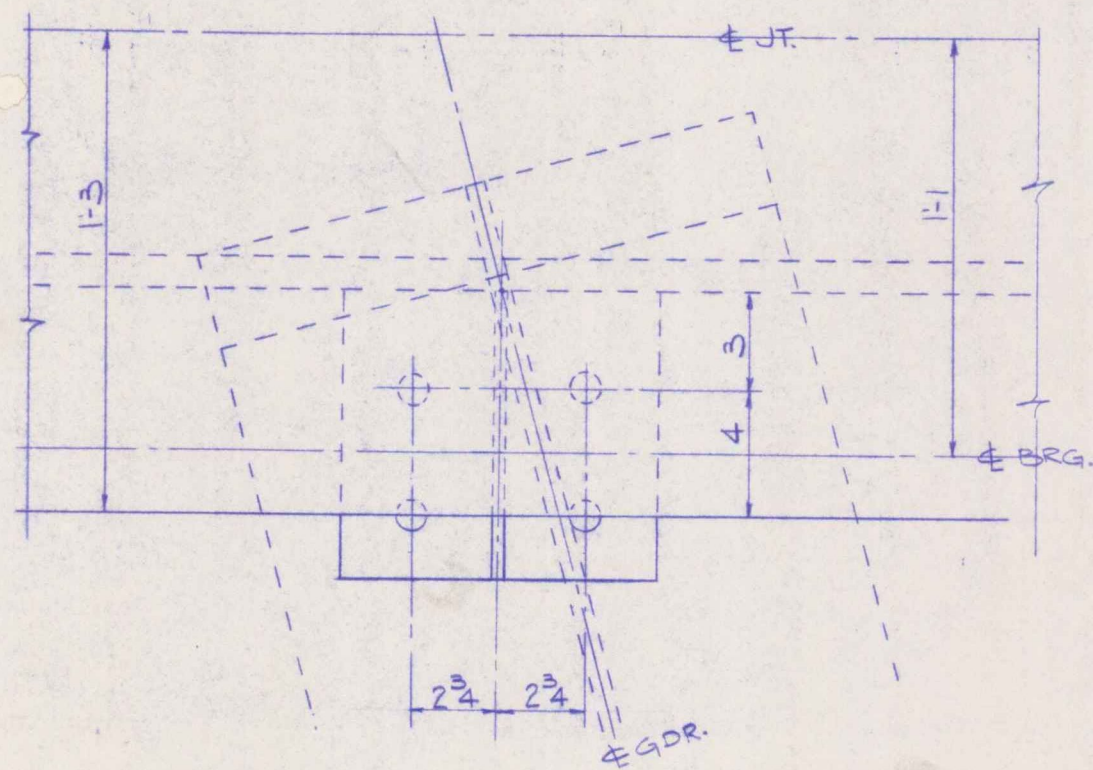


TEMP	A
0	10
15	24
30	38
45	52
60	66
75	80
90	94
105	108

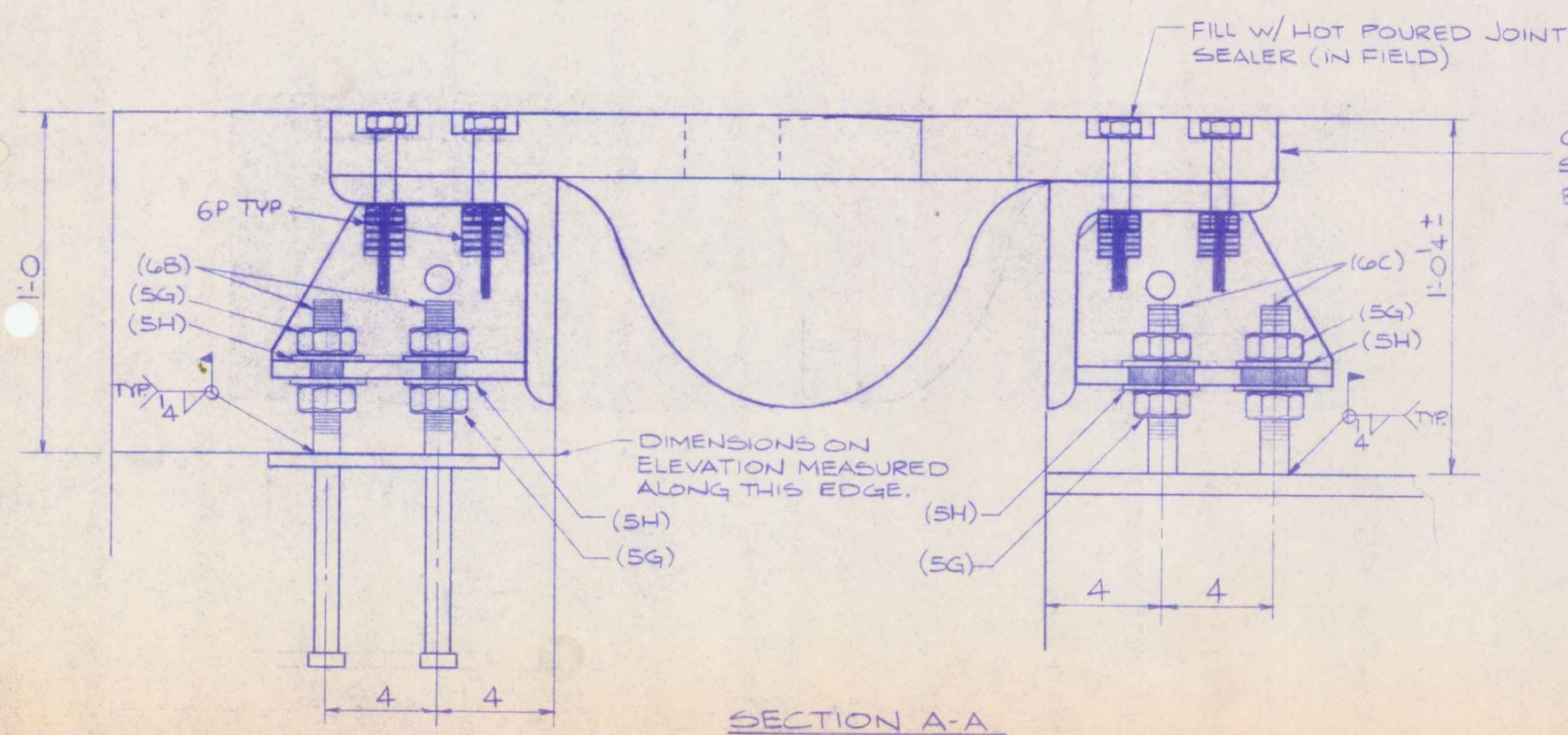
PLAN AT FINGER JOINT (ABUT.)



ELEVATION - EMBEDDED REINFORCEMENT LOCATIONS

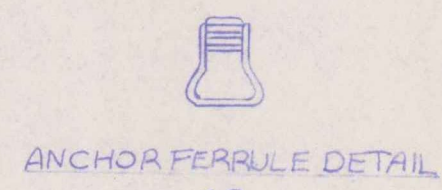


PLAN AT GIRDER SUPPORT

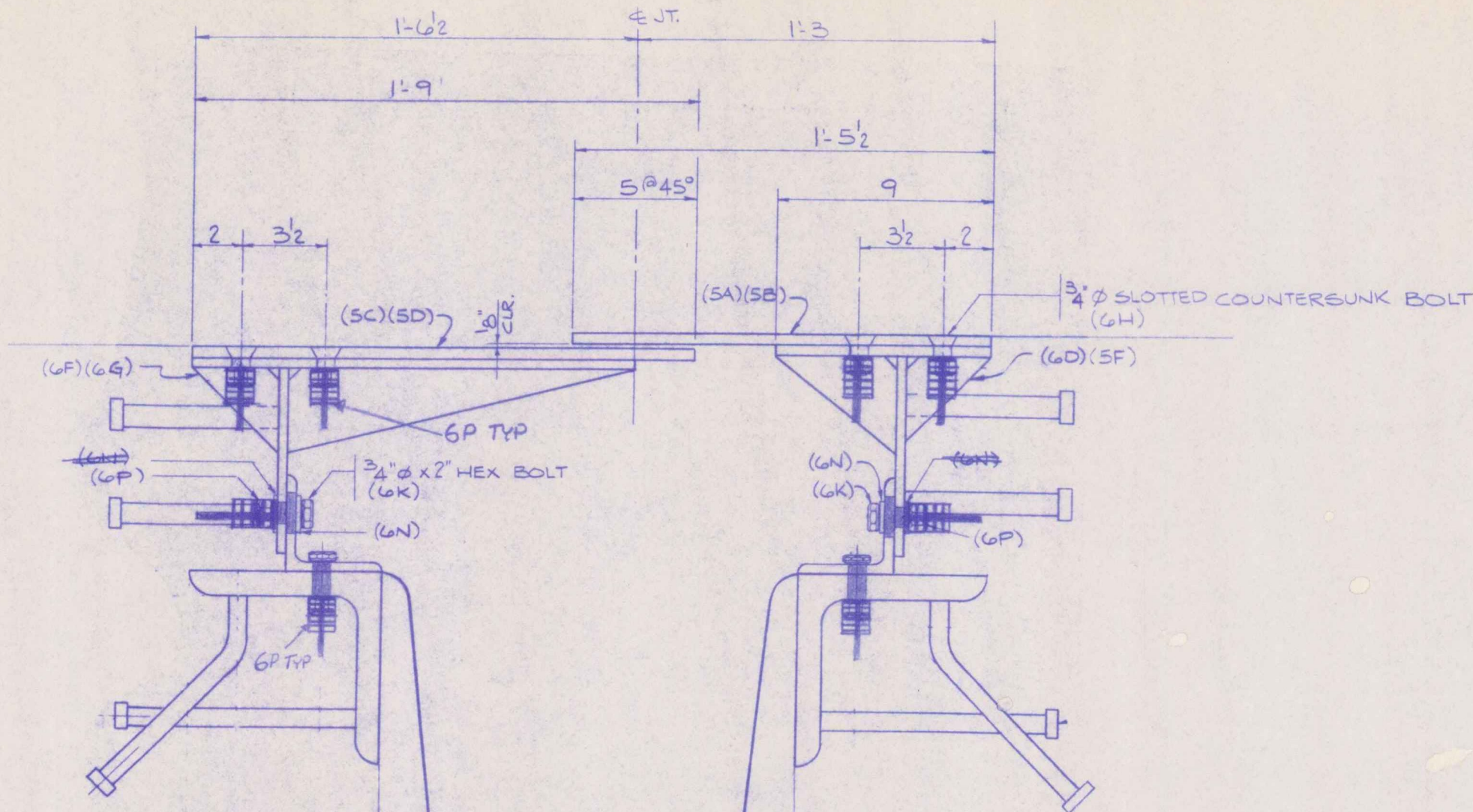


SECTION A-A

FILL W/ HOT POURED JOINT SEALER (IN FIELD)  
 COAT CONCRETE CONTACT SURFACES W/ EPOXY BONDING COMPOUND (IN FIELD)



ANCHOR FERRULE DETAIL 6P



SECTION B-B

No Inspection Taken  Main Components Tested  
 Rejected and Rebuilt  Not Acceptable  
 Reviewed only for general conformance with the design intent of the project and general construction. The contractor is responsible for contract documents. This certificate and construction and testing the work in a satisfactory manner.  
 McFARLAND-JOHNSON ENGINEERS, INC.  
 Date 2/14/17 BY JPE

OUT FOR APPROVAL	1/16/17						
OUT FOR APPROVAL	1/16/17						
ISSUED TO SHOP							
FIELD & OFFICE							
REV	REMARKS	DATE	DWN	CHK	APP	O.A.	NO.
	PROJECT NO. BRS-RS 011B (B)						
MATERIAL:	ELECTRODES	GENERAL NOTES					
HOLES:	SHOP BOLTS						
SURFACE PREP. & PAINT:							
DESCRIPTION: FINGER JOINT ERECTION DET							
JOB: STATE OF VERMONT BRIDGE NO. 44 U.S. ROUTE 5 OVER BLACK RIVER TOWN OF SPRINGFIELD							
CUSTOMER: WINTERSSET, INC.							
BRIDGE & STEEL SERVICE 5 INDUSTRY ROAD SOUTH PORTLAND, ME 04 PHONE (207) 874-2017 FAX (207) 874-85							