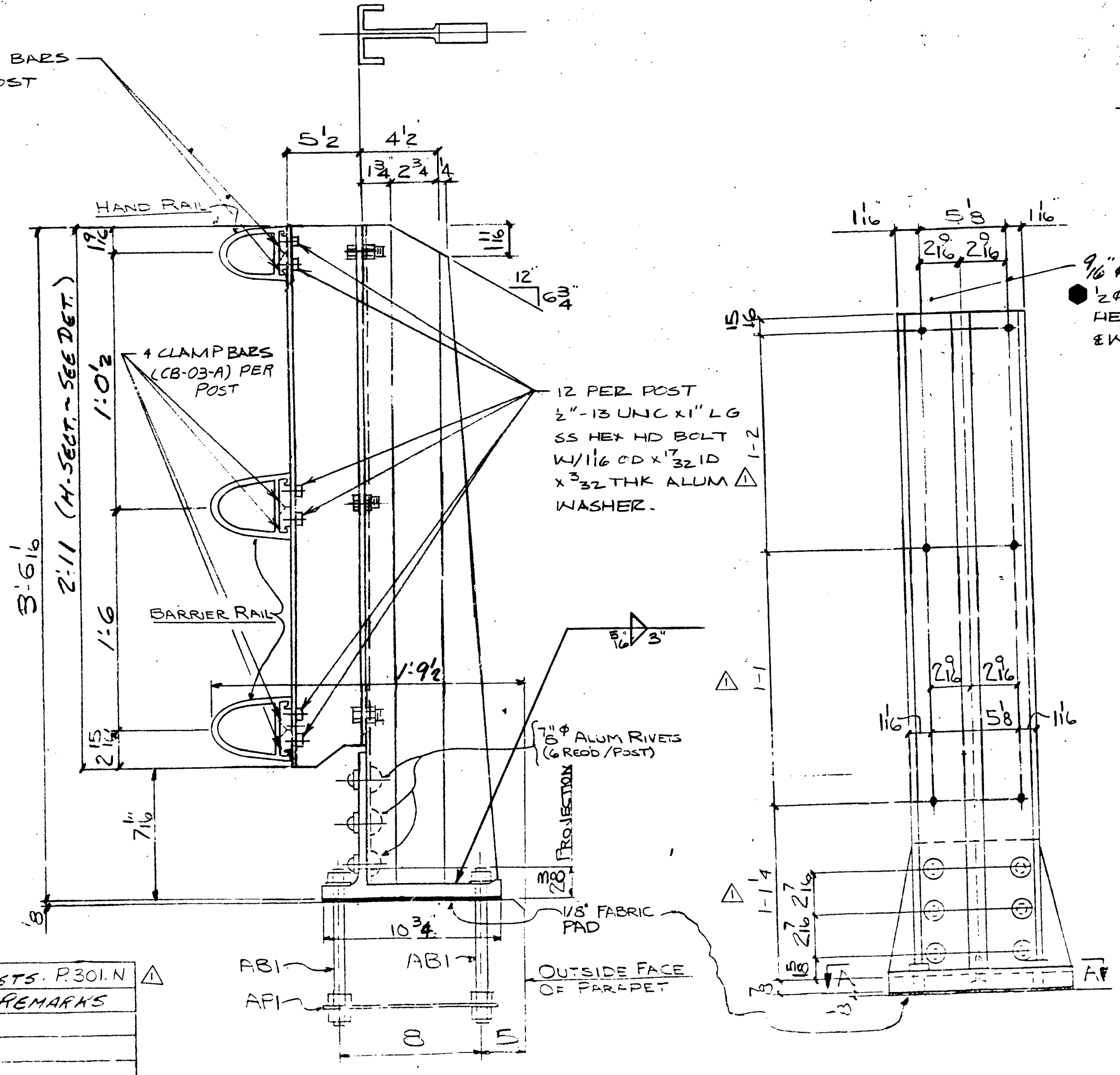
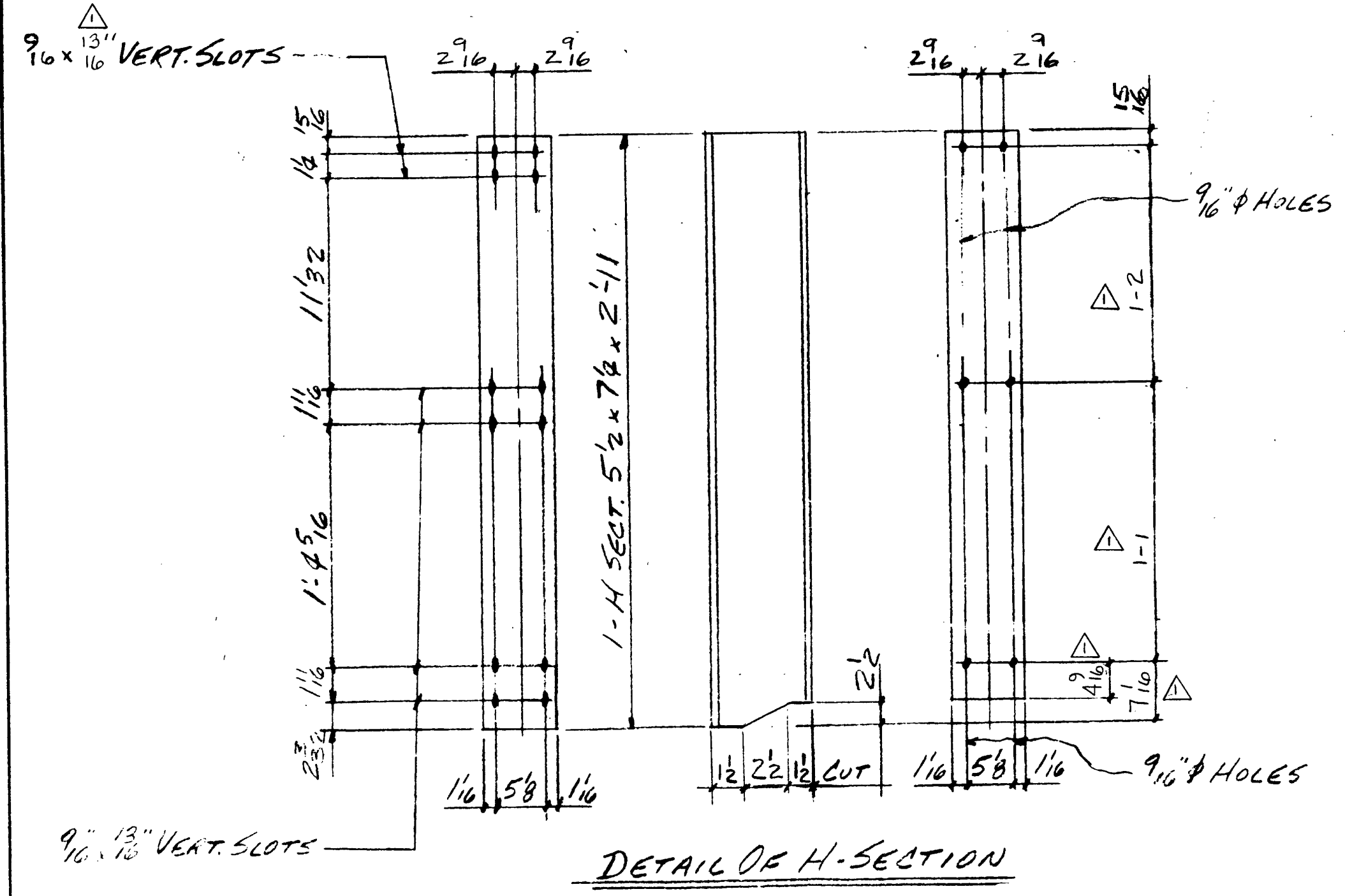
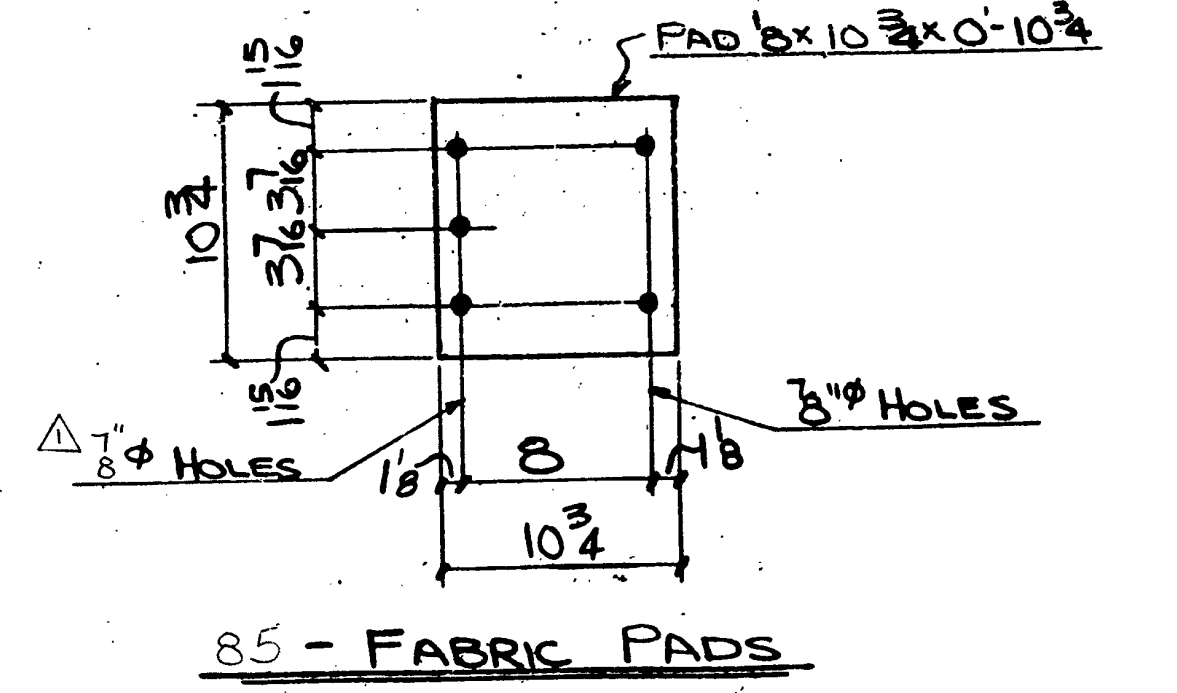
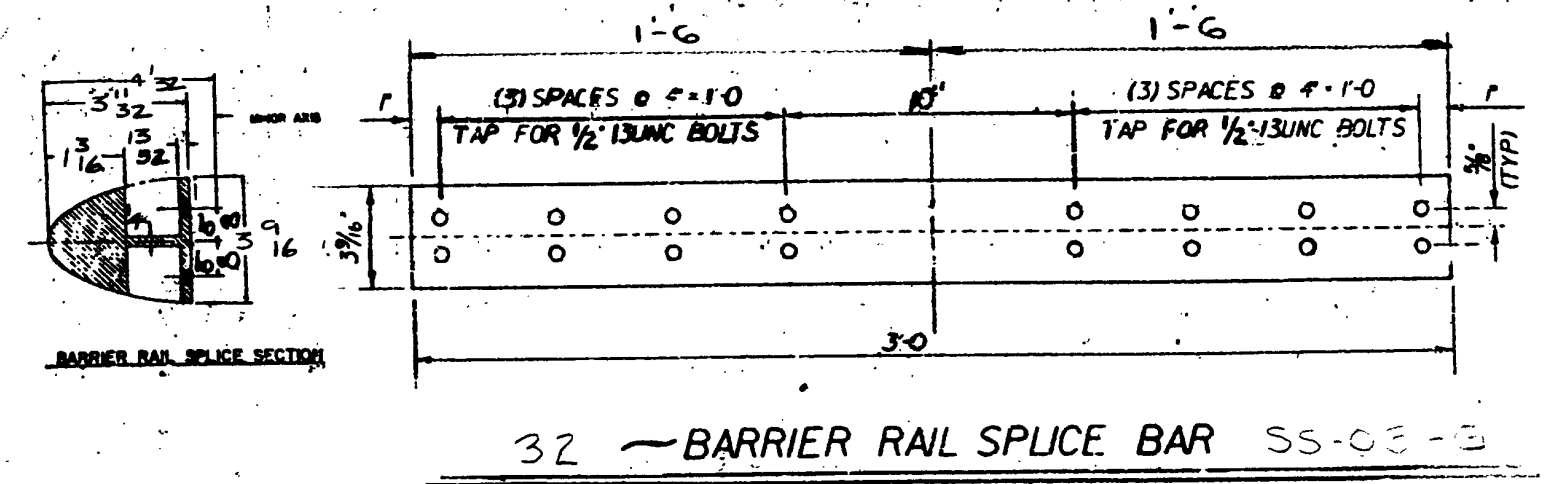
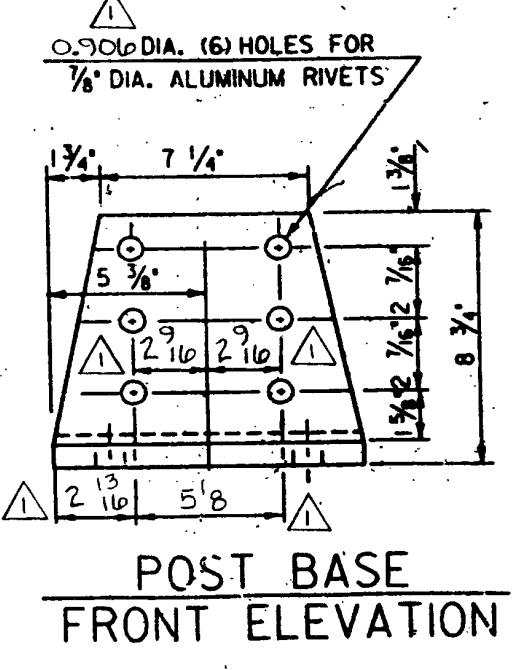
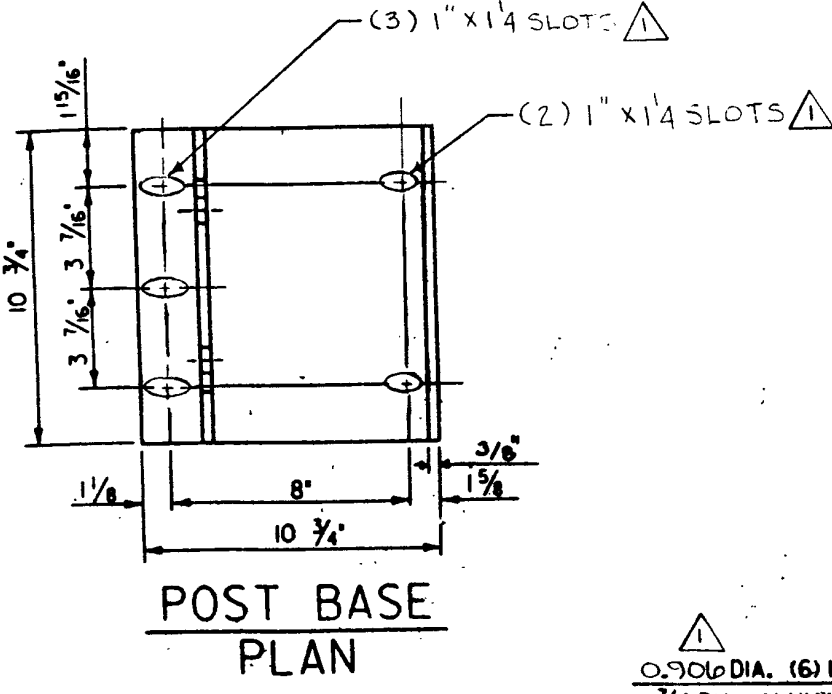
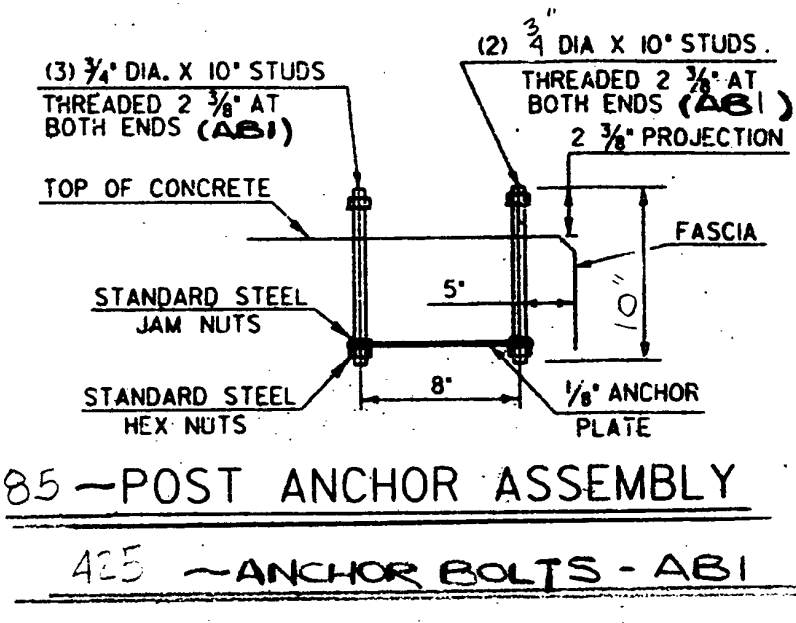
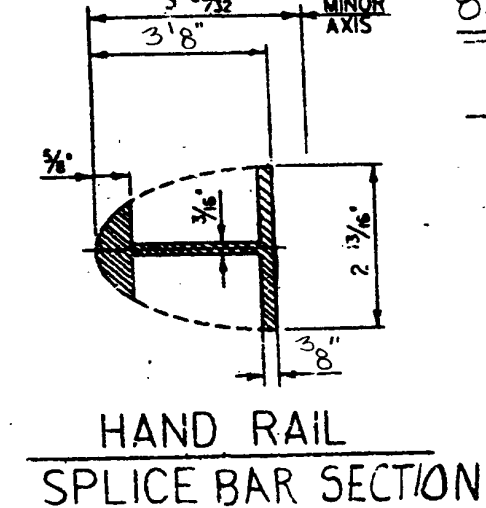
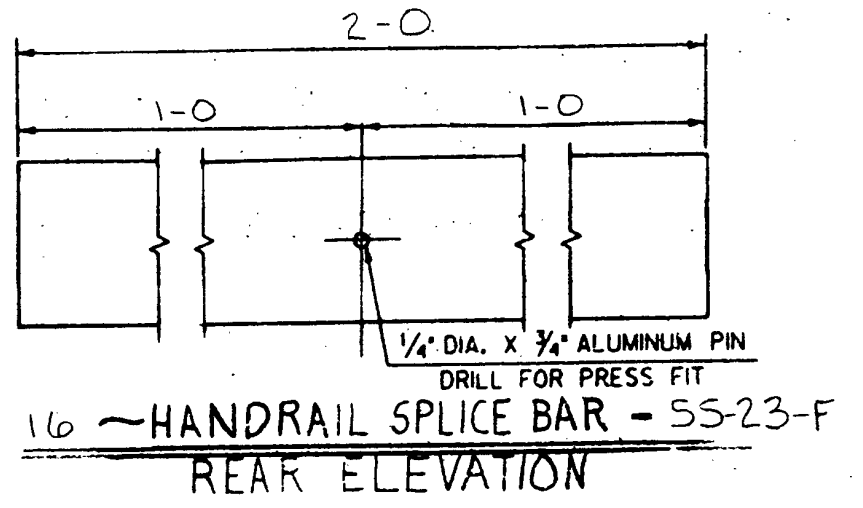


**Barrier Rail Splice Bolt Detail**  
 NOTE: USE FULL THD. BOLT ON HOLE SIDE OF SPLICE & PARTIAL THD. BOLT ON SLOT SIDE OF SPLICE.



QTY	DESCRIPTION	POST MK	LENGTH	REMARKS
85	POST		3'-5 3/16"	
85	H-SECTION	OB-301N	2'-11"	
85	BASE		0'-10 3/4"	
510	1/2" x 3/4" x 4" HD BOLT		0'-1 1/2"	W/ NUT & WASH.
510	7/8" ALUM. RIVETS		0'-1 5/8"	

- GENERAL NOTES**
- MATERIAL FOR POSTS AND BASES SHALL BE ALUMINUM/ASTM B221 ALLOY 6061-T6 OR ALLOY 6351-T5.
  - RAILS, SLEEVES, CLAMP BARS, TO BE ALLOY 6061-T6 OR ALLOY 6351-T5, PER ASTM B221.
  - MATERIAL FOR ALUMINUM WASHERS SHALL BE ASTM B209 ALLOY ALCLAD 2024-T4.
  - MATERIAL FOR RIVETS SHALL BE ASTM B316 OR ASTM B221, ALLOY 6061-T6. RIVETS TO BE BUTTON HEAD AND CONE POINT, COLD DRIVEN.
  - DRIVE TYPE END CAPS TO BE SAND MOLD CASTINGS, ASTM B26, ALLOY 356-T6.
  - POSTS SHALL BE NORMAL TO GRADE AND RAILING PARALLEL TO GRADE.
  - ANCHOR PLATES SHALL BE ASTM A 569 PLAIN.
  - STAINLESS STEEL CAP SCREWS SHALL CONFORM TO ASTM 193 GR. B8 TYPE.
  - PREFORMED FABRIC BEARING PADS SHALL BE COMPOSED OF ONE OR MORE LAYERS 8 OUNCE COTTON DUCK IMPREGNATED AND BOUND WITH HIGH QUALITY NATURAL RUBBER OR OF EQUIVALENT AND EQUALLY SUITABLE MATERIALS COMPRESSED INTO RESILIENT PADS OF UNIFORM THICKNESS. THE FINISHED PADS SHALL WITHSTAND COMPRESSION LOADS PERPENDICULAR TO THE TOP OF PAD OF NOT LESS THAN 10,000 P.S.I. WITHOUT DETRIMENTAL REDUCTION IN THICKNESS OR EXTRUSION.
  - RAILING SHALL BE ATTACHED TO A MINIMUM OF 3 POSTS WHEN POSSIBLE.
  - ALL THREADS TO BE UNC CLASS 2A/2B
  - ALL EXTRUSION TOLERANCES NOT SHOWN SHALL BE IN ACCORDANCE WITH ASTM B221.

APPROVED: \_\_\_\_\_  
 REC'D APPROVAL \_\_\_\_\_  
**L. B. FOSTER CO.**  
 GENERAL OFFICES  
 PITTSBURGH, PENNSYLVANIA 15220

FOR: F.R. LAFAYETTE, INC.  
**VERMONT AGENCY OF TRANSPORTATION**  
 U.S. ROUTE 5 OVER BLACK RIVER  
 WINDSOR COUNTY, TOWN OF SPRINGFIELD  
 3-LINE ALUM. RAIL TYPICAL DETAILS & GENERAL NOTES

DATE: 12/14/90  
 DRAWING: LB-1  
 REV. NO. 2

STD DWG # 47-005 30-MAR-95