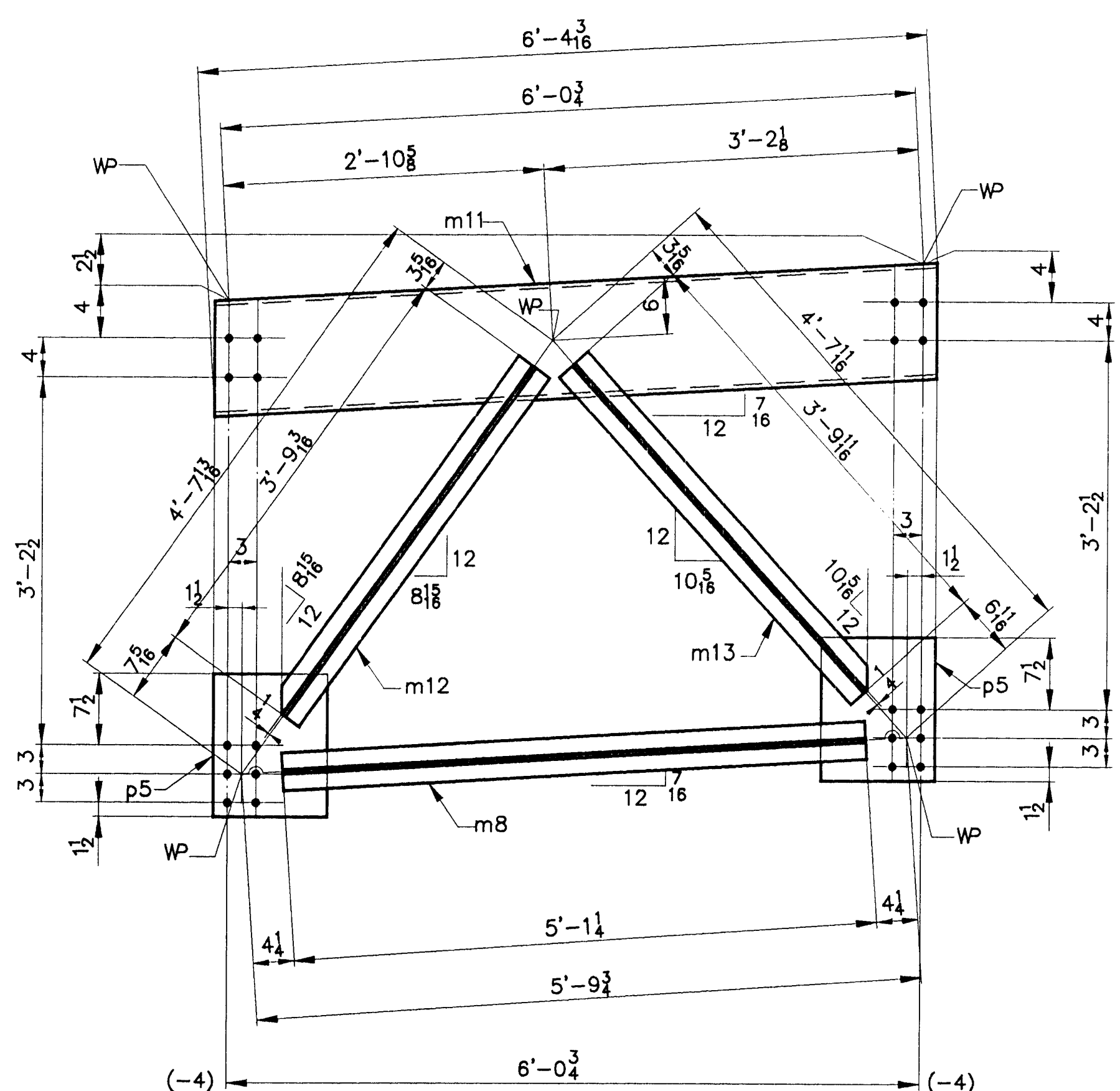
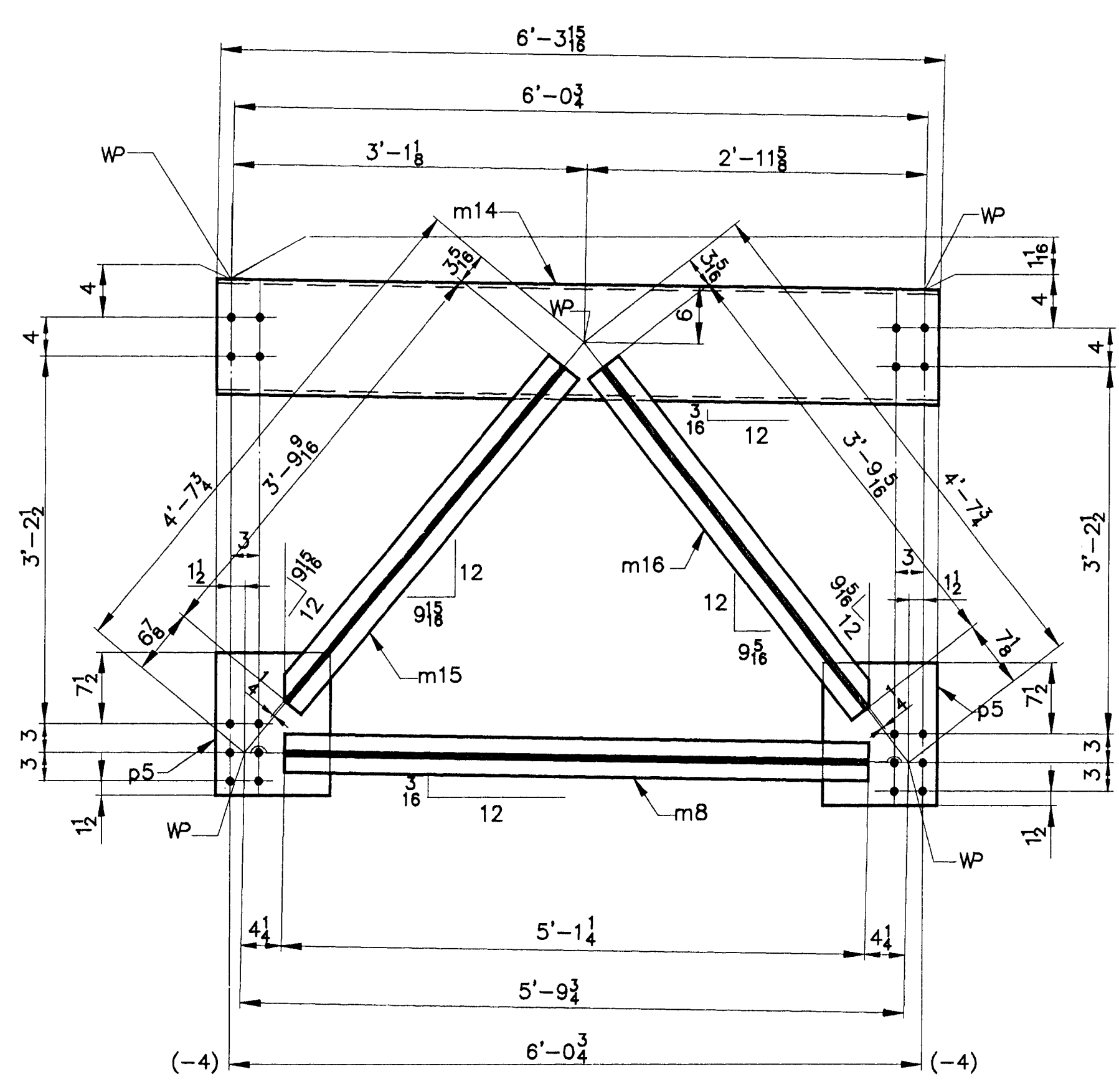


ONE ~ CROSS FRAME ~ F5 [ECFSTR]



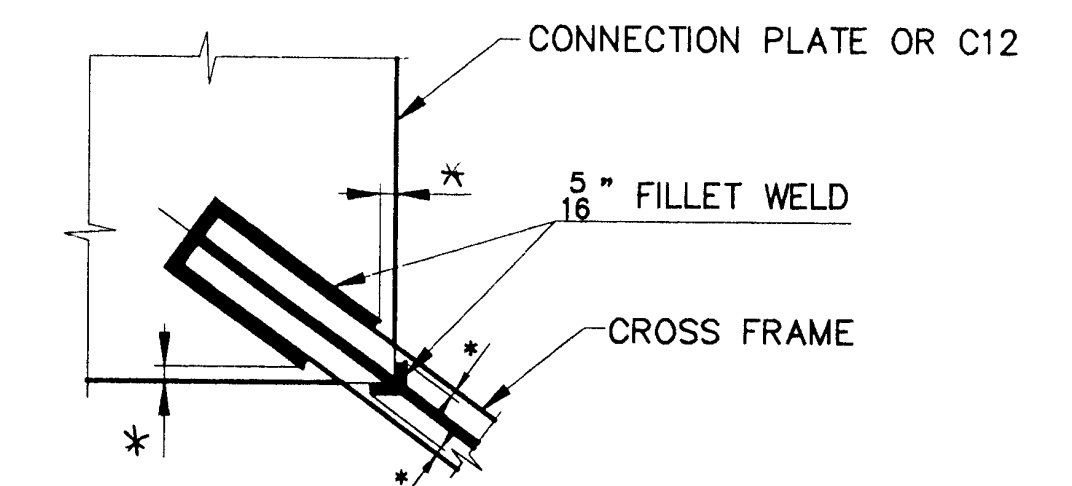
3 ~ CROSS FRAMES ~ F7 [ECFSTR]



2 ~ CROSS FRAMES ~ F9 [ECFSTR]

SHIP MARK		BILL OF MATERIAL				WORK ORDER NO.	DRAWING NO.	REV.
						15713	20-2	
NO.	MARK	SHAPE	LENGTH		ITEM NO.	WT.	REMARKS	
<b>F5 ONE CROSS FRAMES</b>								
Lot-4	1	m7	C12 x 25	6	4 1/2	5 3/8	2 3	159
L-4-A	1	m8	WT 5 x 9.5	5	1 1/4	5 3/8	2 4	48 7/8 W10x19
	1	m9	WT 5 x 9.5	3	8 15/16	5 3/8	2 5	36
	1	m10	WT 5 x 9.5	3	9 15/16	5 3/8	2 5	36
L-4-B	2	p5	R 1/2 x 12	1	3	5 3/8	2 6	51 1/2 R
<b>F7 3 CROSS FRAMES</b>								
Lot-4	3	m11	C12 x 25	6	4 1/2	5 3/8	2 3	476
L-4-A	3	m8	WT 5 x 9.5	5	1 1/4	5 3/8	2 4	145 7/8 W10x19
	3	m12	WT 5 x 9.5	3	9 3/16	5 3/8	2 5	107
	3	m13	WT 5 x 9.5	3	9 11/16	5 3/8	2 5	109
L-4-B	6	p5	R 1/2 x 12	1	3	5 3/8	2 6	153 1/2 R
<b>F9 2 CROSS FRAMES</b>								
Lot-4	2	m14	C12 x 25	6	3 15/16	5 3/8	2 3	316
L-4-A	2	m8	WT 5 x 9.5	5	1 1/4	5 3/8	2 4	97 7/8 W10x19
	2	m15	WT 5 x 9.5	3	9 9/16	5 3/8	2 5	72
	2	m16	WT 5 x 9.5	3	9 5/16	5 3/8	2 5	72
L-4-B	4	p5	R 1/2 x 12	1	3	5 3/8	2 6	102 1/2 R

1979 #



\* NO WELD FOR 1/4" MIN., 1/2" MAX.

WELD TERMINATION DETAIL

STEEL: ASTM  A36  A572 GR.  A709 GR. 50W  Unless Noted

WELDING ELECTRODE:  E70  See Welding Proc.  None

HOLES:  13/16  15/16  1-1/16  Unless Noted  As Noted  None

PAINT:  None  Shop Coat  Galv. After Fab.  Unless Noted

SPECIAL PAINT: NONE

SPECIAL CLEANING:  Blast Clean SSPC SP10  None

ITEM NO. 506.55 BRIDGE NO. 44 PROJ. NO. BRS-RS 0113 (8)

TITLE: CROSS FRAMES

APPROVED: \_\_\_\_\_

PRINT DIST. \_\_\_\_\_

ORIG 12-3-96 APP. 5 10-14-96 FAB. 5 11-18-96 APP. 0216 4-3-97 VAI

**NE National Eastern Corporation**  
Plainville, Connecticut

JOB: U.S. ROUTE 5 OVER BLACK RIVER  
SPRINGFIELD, VERMONT

CUSTOMER: WINTERSETT, INC.

DESIGNER: VERMONT AGENCY OF TRANSPORTATION

WORK ORDER NO. 15713 DRAWING NO. 20-2 REV.

CHECKED 10/96 JH DRAWN 9/96 CSD