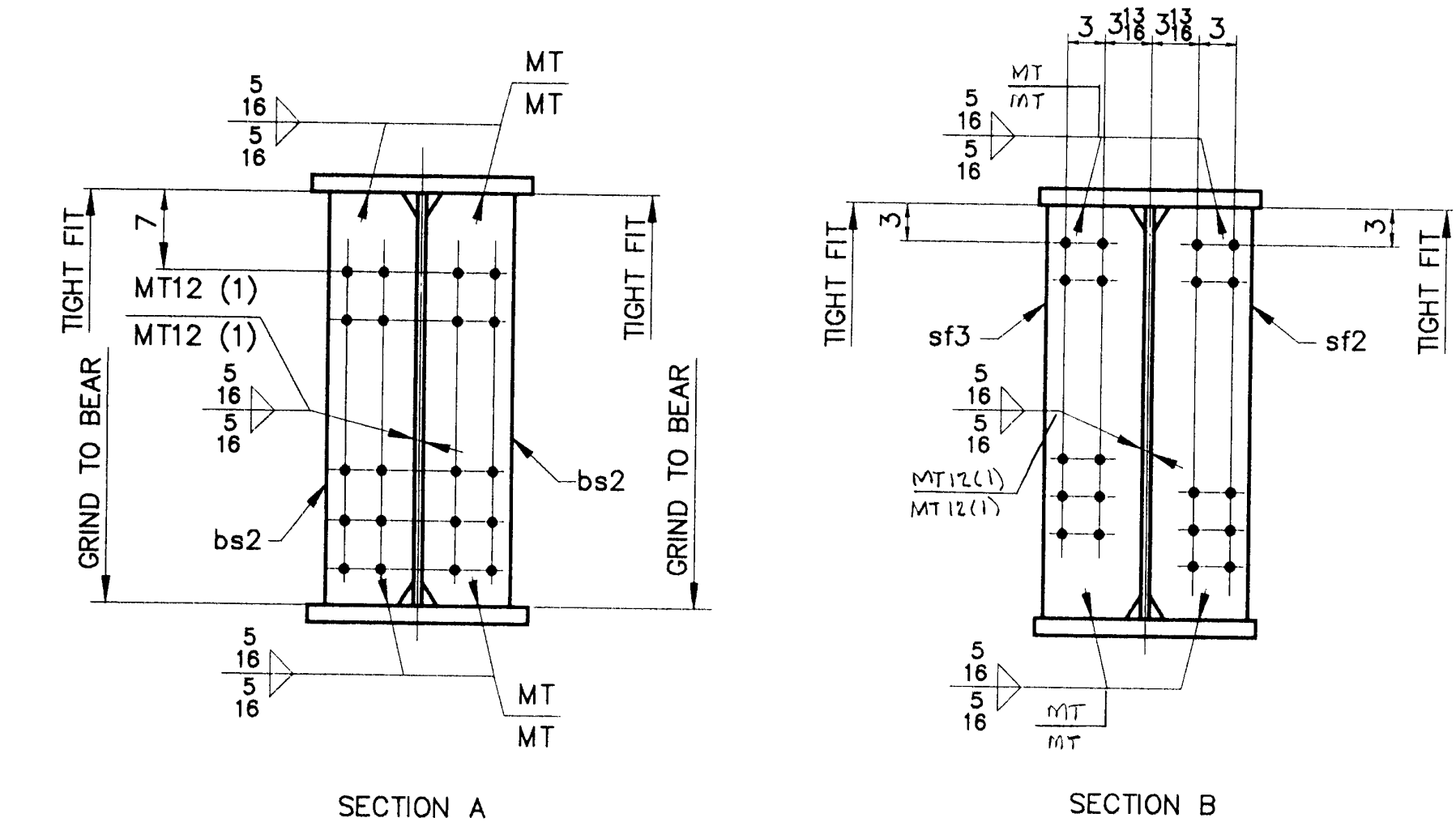
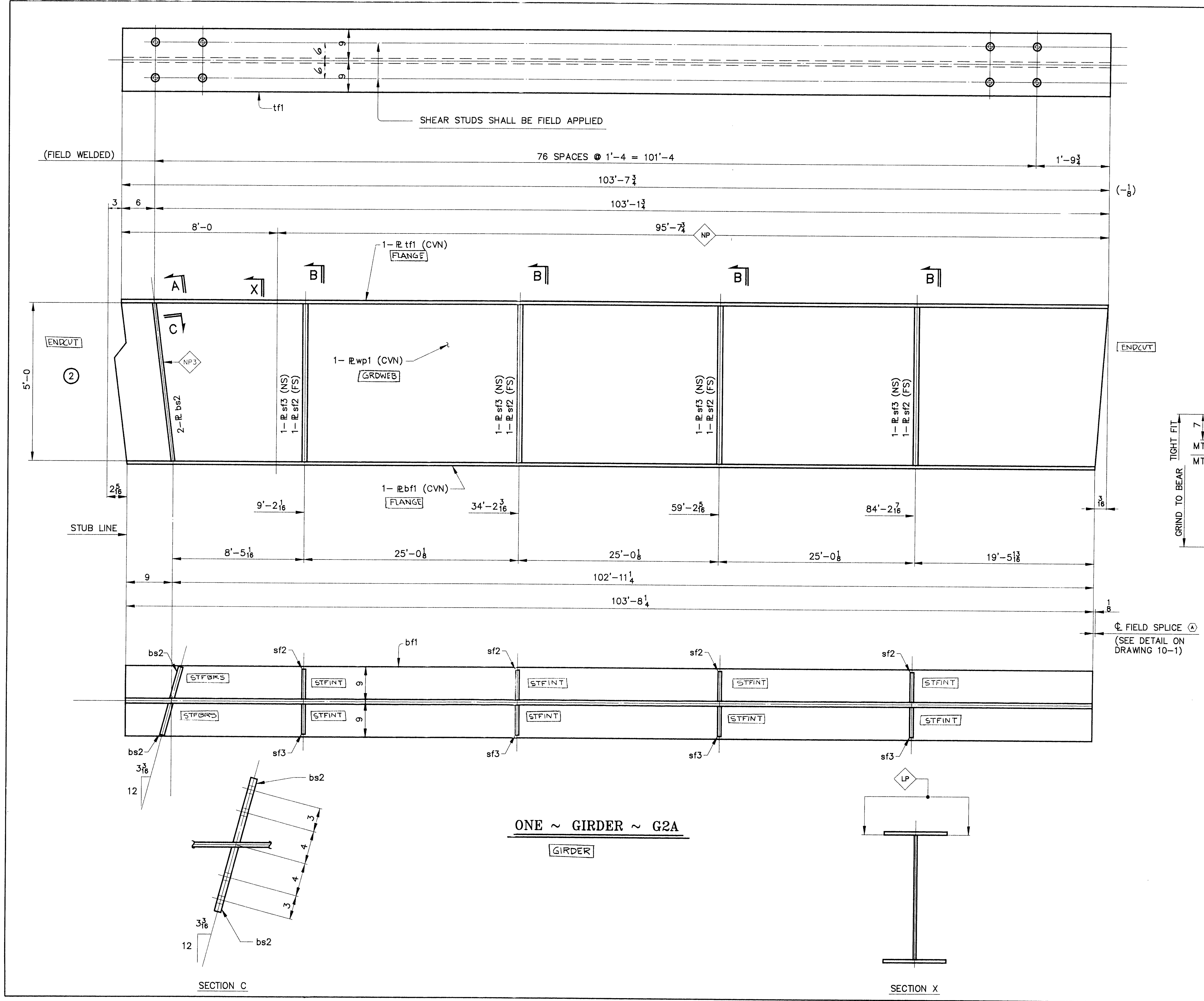


SHIP MARK	BILL OF MATERIAL				WORK ORDER NO.	DRAWING NO.	REV.
	NO.	MARK	SHAPE	LENGTH	15713	10-8	
G2A	ONE		GIRDER				
LOT 2	1	wp1	R 5/8 x 60	103 10	1	3	13228 (CVN)
6-2-H	1	tf1	R 1 1/8 x 18	103 7 3/4	1	8	7142 (CVN)
6-2-B	1	bf1	R 1 1/8 x 18	103 8 1/4	1	5	7145 (CVN)
6-2-C	2	bs2	R 7/8 x 8 1/2	5 0	2	1	253 F2E
6-2-D	4	sf2	R 1/2 x 8	5 0	2	2	272 F1E
6-2-E	4	sf3	R 1/2 x 8	5 0	2	2	272 F1E
							28312



- NOTES**
- FOR CAMBER DIAGRAM SEE DRAWING 10-4.
 - FOR GIRDER STANDARD DETAILS SEE DRAWING 10-3.
 - (CVN) DENOTES CHARTY TEST REQUIRED.

STEEL: ASTM A36 A572 [GR.] A709 [GR.] 50W Unless Noted

WELDING ELECTRODE: E70 See Welding Proc. None

HOLES: 13/16 15/16 1-1/16 Unless Noted As Noted None

PAINT: None Shop Coat Galv. After Fab. Unless Noted

SPECIAL PAINT: SEE SHEET 10-1

SPECIAL CLEANING: Blast Clean. SSPC SP10 None

ITEM NO. 506.55 BRIDGE NO. 44 PROJ. NO. BRS-RS 0113 (8)

TITLE: GIRDER ~ G2A

APPROVED: _____

PRINT DIST. _____

ORIG 10-3-96 APPR. _____

5 11-8-96 APPR. _____

DRG 4-2-97 VAI

National Eastern Corporation
Plainville, Connecticut

JOB: U.S. ROUTE 5 OVER BLACK RIVER
SPRINGFIELD, VERMONT

CUSTOMER: WINTERSETT, INC.

DESIGNER: VERMONT AGENCY OF TRANSPORTATION

WORK ORDER NO. 15713 DRAWING NO. 10-8 REV. _____

CHECKED 10/96 (CSD) DRAWN 9/96 CSD