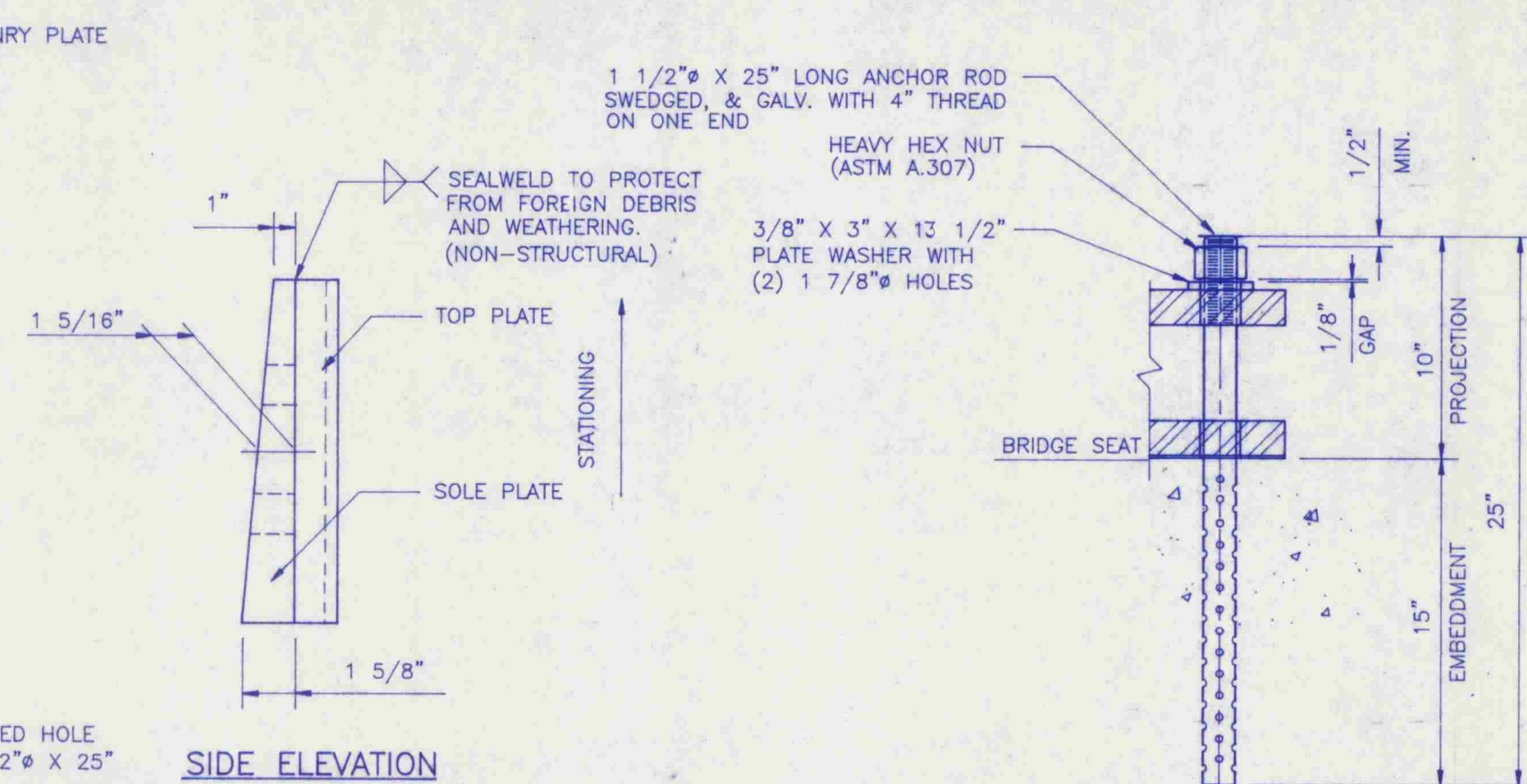


PLAN

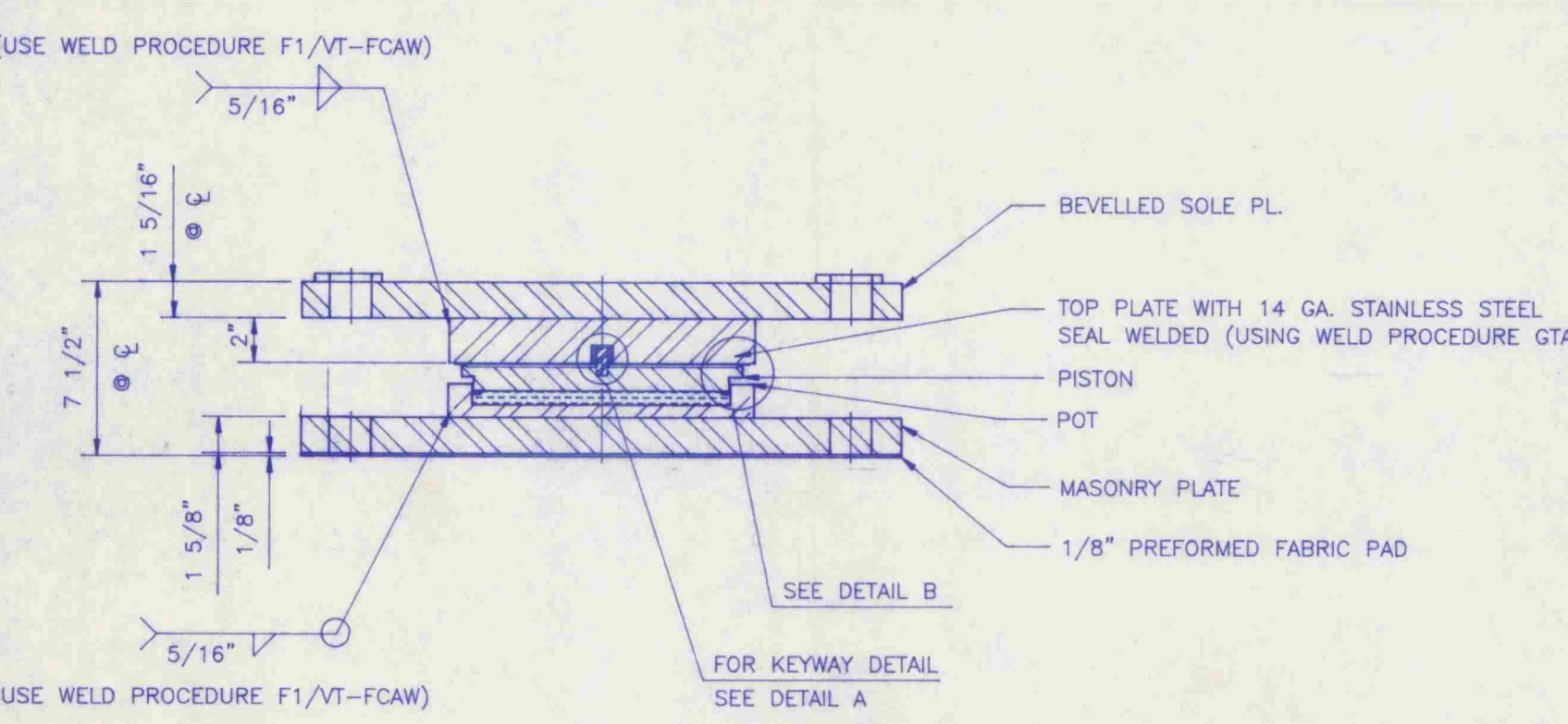


SIDE ELEVATION
TYPICAL ANCHOR BOLT DETAIL
QUANTITY - 28

CONTRACTOR SHALL BURR
THREADS TO PREVENT REMOVAL

WHEN FIELD WELDING BEARING ASSEMBLY
TO GIRDER, DO NOT ALLOW ELECTRICAL
CURRENT TO PASS THROUGH PISTON/
POT ASSEMBLY AS DAMAGE MAY OCCUR

NUTS, BOLTS, AND WASHERS
TO BE SUPPLIED BY COSMEC, INC.

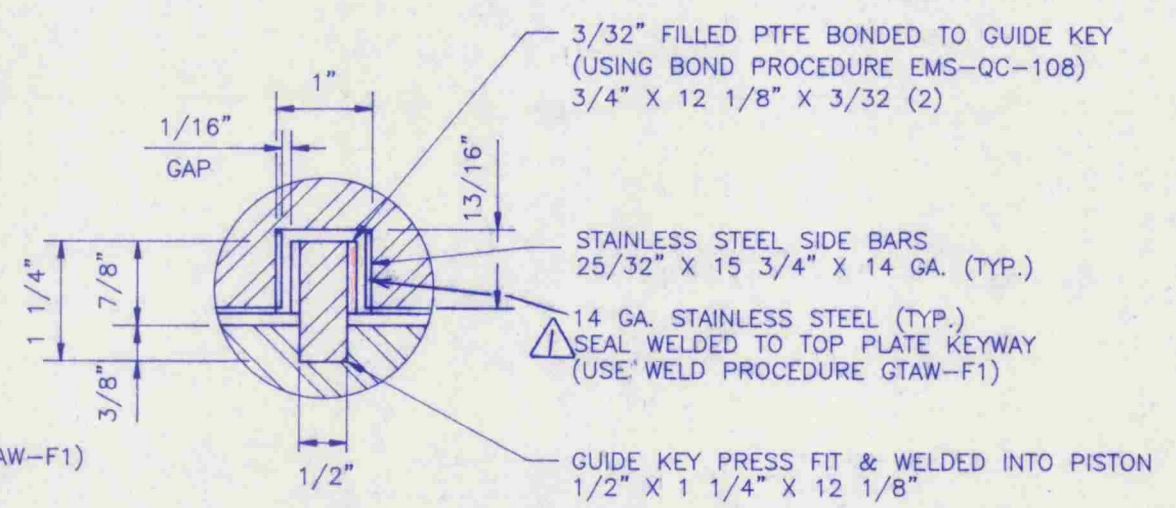


SECTION A-A
CENTER GUIDED
EXPANSION POT BEARING
QUANTITY REQUIRED - 7

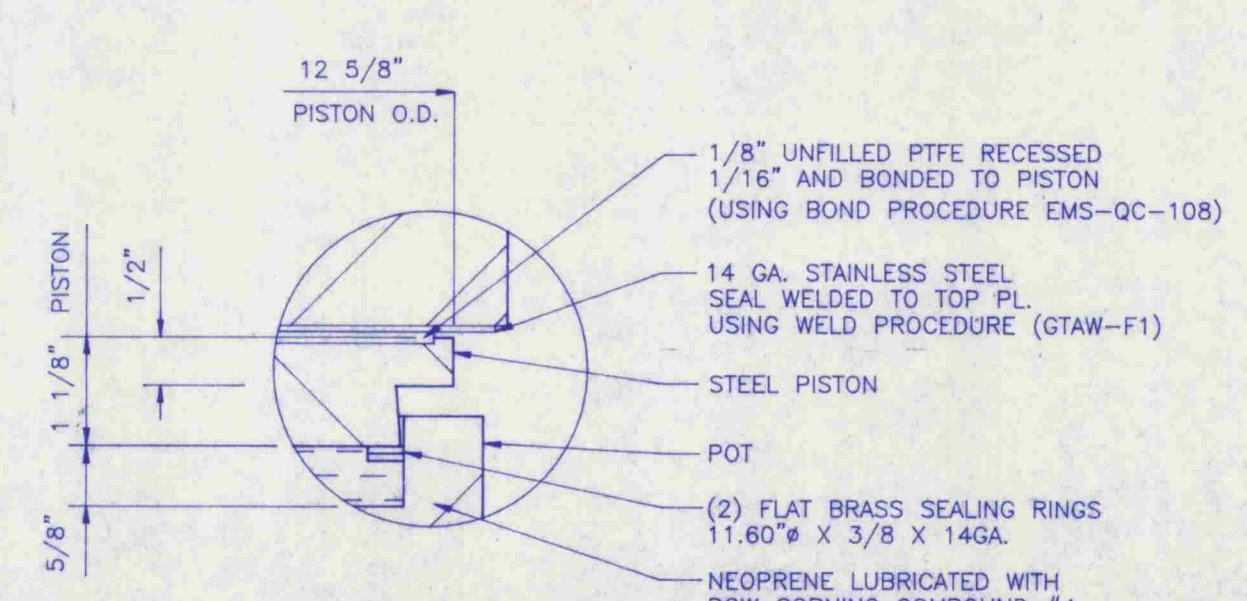
LOCATION - PIER
VERTICAL CAPACITY - 370 KIPS
HORIZONTAL CAPACITY - 37 KIPS
TOTAL LONGITUDINAL MOVEMENT - 3 1/2"
TOTAL TRANSVERSE MOVEMENT - 1/8"
ROTATION CAPACITY - .015 RADS

NOTE: OVERALL BEARING HEIGHTS DIFFER FROM THOSE SHOWN ON THE CONTRACT PLANS. CONTRACTOR SHALL RECOMPUTE BEARING SEAT ELEVATIONS TO ACCURATELY REFLECT THE HEIGHTS OF BEARING SUPPLIED.

*Approved
17 June 99
WJT*



DETAIL A
SCALE 3/4\"/>



DETAIL B
SCALE 3/4\"/>

NOTES:

MATERIALS:

- STEEL - ASTM A709 GR. 36 (ZINC METALLIZED AND SEALED WITH AN APPROVED SEALER COAT.) SEE BEARING NOTE NO. 5
- STAINLESS STEEL - ASTM A240 TYPE 304 NO. 8 MIRROR FINISH
- GUIDE KEY - C.1018 CRB
- PREFORMED FABRIC PAD - AASHTO STANDARD DIV II, SPEC. 18.10.2 & VT. SPEC 731.01 & 531 & ITS LATEST REVISIONS
- PTFE - ASTM D.1457 VIRGIN FILLED AND UNFILLED
- FLAT BRASS SEALING RINGS - ASTM B.36 HALF HARD
- NEOPRENE - AASHTO 50 DUROMETER
- ANCHOR ROD - ASTM A36 SWEDGED AND GALV.

INSTALLATION NOTES:

- WHEN WELDING SOLE PLATES TO GIRDER FLANGE USE TEMPERATURE STICKS TO INSURE THAT THE SURFACES CONTACTING THE PTFE SURFACES DO NOT EXCEED 250°F OR DAMAGE MAY OCCUR.
- PROTECT STAINLESS STEEL & PTFE SURFACES FROM DIRT, WELD SPATTER, AND ANY FOREIGN MATTER. AVOID EXCESSIVE EXPOSURE OF PTFE TO SUNLIGHT OR DAMAGE MAY OCCUR.

BEARING NOTES:

- ALL MATERIAL USED IN THE MANUFACTURE OF THESE BEARINGS SHALL BE MADE IN THE USA.
- BEARINGS SHALL BE SHIPPED AS COMPLETE UNITS AND SHALL BE WRAPPED TO PROTECT FROM MOISTURE AND DIRT DURING TRANSIT AND STORAGE.
- LOCATION OF FABRICATION PLANT: 70 SOUTH STREET WALPOLE, MA 02081
- BEARINGS MUST NOT BE DISASSEMBLED UNDER ANY CIRCUMSTANCES. UNAUTHORIZED DISASSEMBLY MAY CAUSE MALFUNCTION OF UNIT.
- ALL METALLIZING TO CONFORM WITH AWS C2.2 SPECS. ALL EXTERIOR STEEL SURFACES SHALL BE ZINC METALLIZED A MINIMUM OF 6 MILS. ALL INTERIOR SURFACES SHALL RECEIVE 2 MILS MINIMUM. INTERIOR SURFACES INCLUDE INSIDE POT CAVITY AND BOTTOM OF PISTON. ALL OTHER CARBON SURFACES ARE CONSIDERED EXTERIOR.

STATE OF VERMONT
AGENCY OF TRANSPORTATION

TOWN OF SPRINGFIELD
U.S. HIGHWAY #5
OVER THE BLACK RIVER
CONTRACT NO. BRS-RS-0113(8)
BRIDGE NO. 44

COSMEC, INC. 70 SOUTH STREET WALPOLE, MA 02081

SCALE 3/16\"/>

370 KIP CENTER GUIDED EXP. BEARING @ PIER

REV. REVISE LEADER LINE TO SHOW ST. STEEL IN KEYWAY (SEE REVISIONS)

CUSTOMER: WINTERSSET, INC. SA NUMBER: 57657 DRAWING NUMBER: 2481 REV: 7