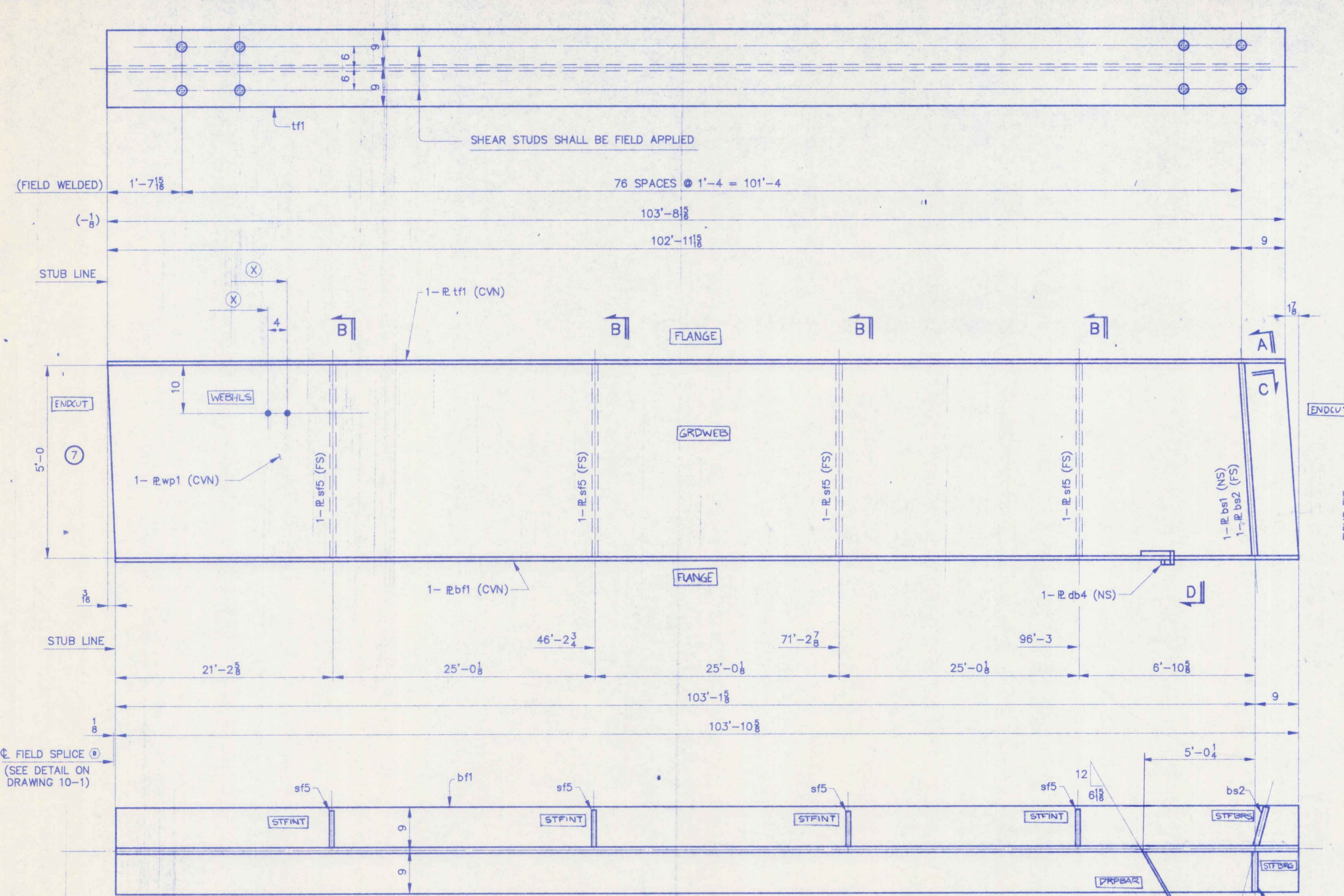
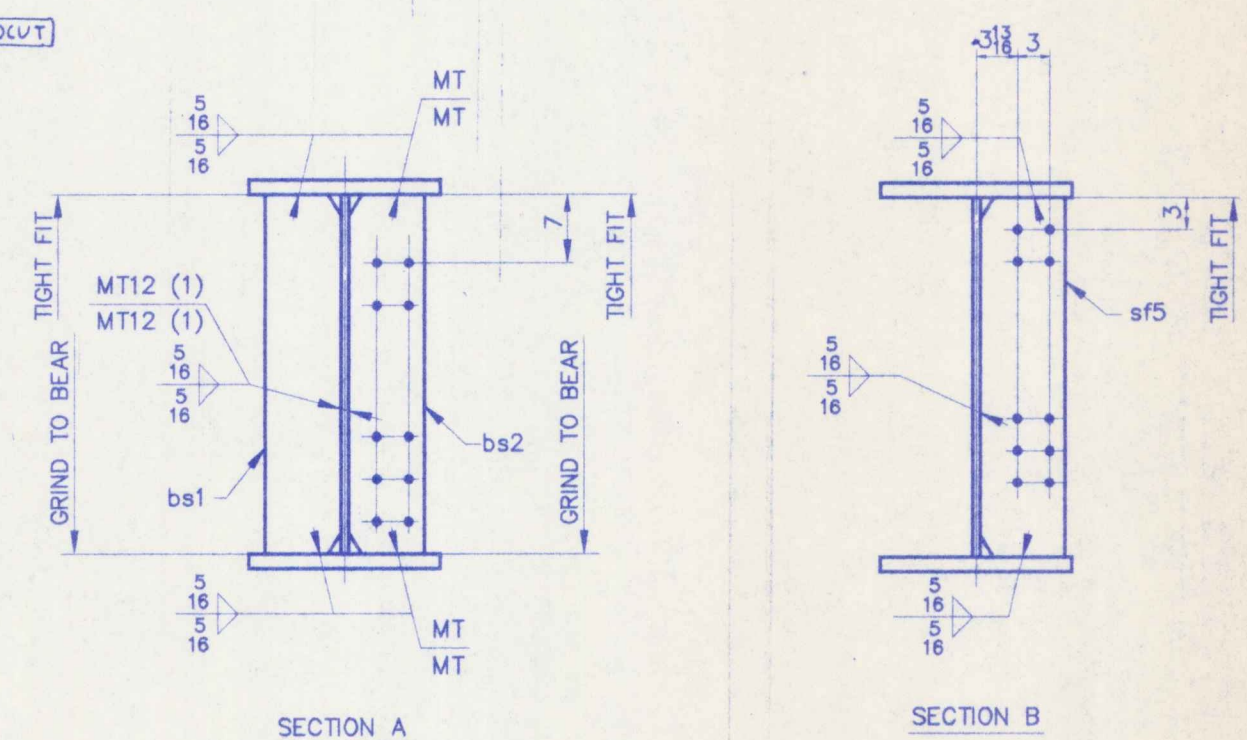


3'-0 1/8
3'-4 1/8
6'-10
7'-2
10'-10
11'-2
14'-10
15'-2
18'-10
19'-2
21'-10
22'-2
25'-10
26'-2
29'-10
30'-2
33'-10
34'-2
37'-10
38'-2
41'-10
42'-2
44'-10 1/8
45'-2 1/8
48'-10 1/8
49'-2 1/8
52'-10 1/8
53'-2 1/8
56'-10 1/8
57'-2 1/8
60'-10 1/8
61'-2 1/8
64'-10 1/8
65'-2 1/8
68'-10 1/8
69'-2 1/8
72'-1 1/8
72'-5 1/8
76'-1 1/8
76'-5 1/8
80'-1 1/8
80'-5 1/8
84'-1 1/8
84'-5 1/8
88'-1 1/8
88'-5 1/8
92'-1 1/8
92'-5 1/8
95'-1 1/8
95'-5 1/8
98'-1 1/8
98'-5 1/8
101'-1 1/8
101'-5 1/8



ONE ~ GIRDER ~ G7C  
[GIRDER]

BILL OF MATERIAL				WORK ORDER NO.	DRAWING NO.	REV.	
				15713	10-27		
SHIP MARK	NO.	MARK	SHAPE	LENGTH	ITEM NO.	WT.	REMARKS
G7C	ONE		GIRDER				
	1	wp1	1/2" x 80	103	101	312.247	(CVN)
	1	tf1	1/2" x 18	103	81	714.9	(CVN)
	1	bf1	1/2" x 18	103	101	715.8	(CVN)
	1	bs1	1/2" x 82	5	0	1.27	F2E
	1	bs2	1/2" x 82	5	0	1.27	F2E
	4	sf5	1/2" x 8	5	0	2.72	F1E
	1	db4	1/2" x 3 1/2	1	0	3	



NOTES  
FOR APPROVAL

- FOR CAMBER DIAGRAM SEE DRAWING 10-6.
- FOR GIRDER STANDARD DETAILS SEE DRAWING 10-3.
- (CVN) DENOTES CHARTY TEST REQUIRED.

STEEL: ASTM  A36  A572 Gr.  A599 Gr. 50W  Unless Noted

WELDING ELECTRODE:  E70  See Welding Proc.  None

HOLES:  13/16"  15/16"  1 1/4"  1 1/2"  1 3/4"  2"  Unless Noted

PAINT:  None  Shop Coat  Galv. After Fab.  Unless Noted

SPECIAL PAINT: NONE

SPECIAL CLEANING:  Blast Clean SSPC SP10  None

ITEM NO. 506.55 BRIDGE NO. 44 PROJ. NO. BRS-RS 0113 (8)

TITLE: GIRDER ~ G7C

APPROVED: [Signature] National Eastern Corporation  
Plainville, Connecticut

JOB: U.S. ROUTE 5 OVER BLACK RIVER  
SPRINGFIELD, VERMONT

CUSTOMER: WINTERSETT, INC.  
DESIGNER: VERMONT AGENCY OF TRANSPORTATION

WORK ORDER NO. 15713 DRAWING NO. 10-27 REV.

CHECKED: 11/96 [Signature] DRAWN: 9/96 [Signature]

No Exception Taken  Heavy Connections Noted   
 Review and Revisions  Not Acceptable  
 Released only for general reference with the design engineer of the project and general compliance with the information given in the contract documents. The contractor is responsible for compliance with all applicable codes and standards for work in a permanent manner.  
 NATIONAL EASTERN CORPORATION ENGINEERS, INC.  
 Date 12/11/96 by [Signature]