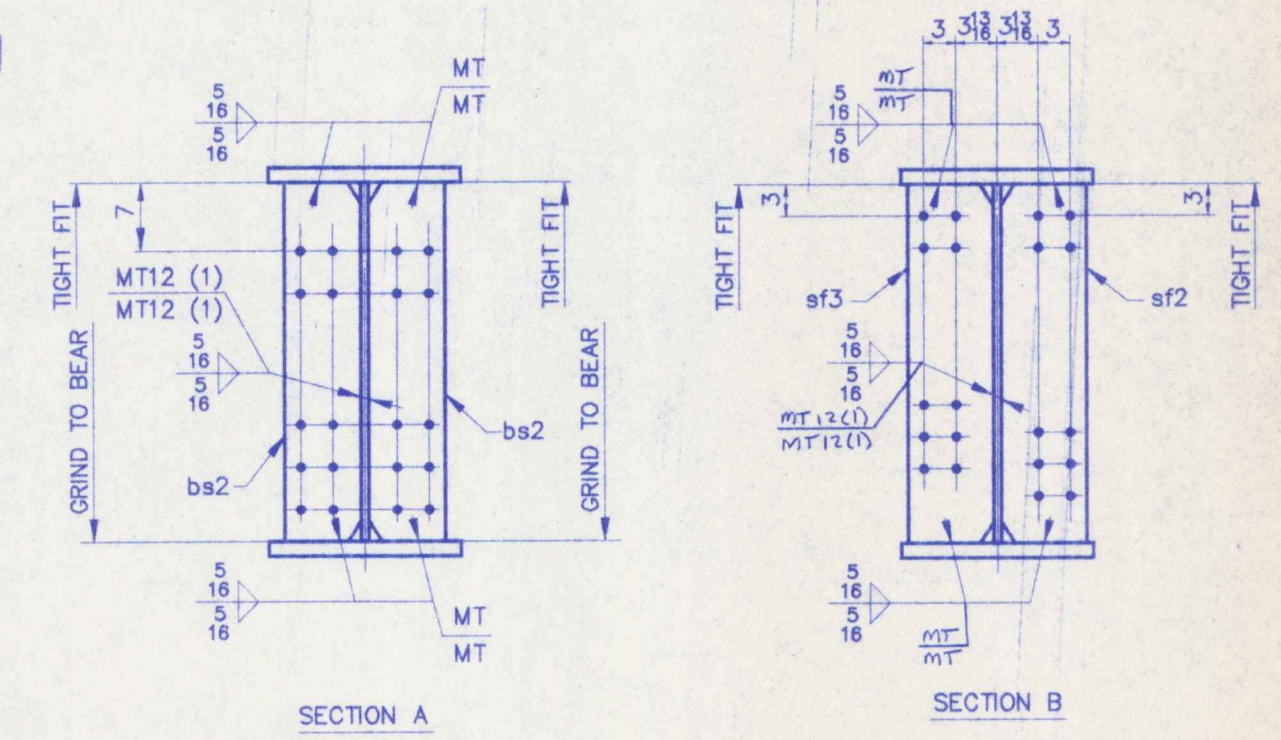


BILL OF MATERIAL				WORK ORDER NO.	DRAWING NO.	REV.	
				15713	10-22		
SHIP MARK	NO.	MARK	SHAPE	LENGTH	ITEM NO.	WT.	REMARKS
G2C	ONE		GIRDER				
	1	wp1	$\frac{1}{2}$ " x 60	103' 10 1/2"	1	13247	(CVN)
	1	tf1	$\frac{1}{2}$ " x 18	103' 8 1/2"	1	7149	(CVN)
	1	bf1	$\frac{1}{2}$ " x 18	103' 10 1/2"	1	7159	(CVN)
	2	bs2	$\frac{7}{8}$ " x 8 1/2	5' 0"	2	1253	F2E
	4	sf2	$\frac{1}{2}$ " x 8	5' 0"	4	272	F1E
	4	sf3	$\frac{1}{2}$ " x 8	5' 0"	4	272	F1E
						28551	



**NOTES**

1. FOR CAMBER DIAGRAM SEE DRAWING 10-6.

2. FOR GIRDER STANDARD DETAILS SEE DRAWING 10-3.

3. (CVN) DENOTES CHARTY TEST REQUIRED.

STEEL: ASTM  A36  A572 GR  A709 GR 50W  Unless Noted

WELDING ELECTRODE:  E70  See Welding Proc.  None

HOLES:  1 1/2"  1 1/4"  1 1/8"  1"  As Noted  None

PAINT:  None  Shop Coat  Gally After Fpb.  Unless Noted

SPECIAL PAINT: NONE

SPECIAL CLEANING:  Blast Clean SSPC SP10  None

ITEM NO. 506.55 BRIDGE NO. 44 PROJ. NO. BRS-RS 0113 (8)

TITLE: GIRDER ~ G2C

APPROVED: National Eastern Corporation  
Plainville, Connecticut

JOB: U.S. ROUTE 5 OVER BLACK RIVER  
SPRINGFIELD, VERMONT

CUSTOMER: WINTERSSETT, INC.

DESIGNER: VERMONT AGENCY OF TRANSPORTATION

WORK ORDER NO. 15713 DRAWING NO. 10-22 REV.

CHECKED 1/96 CSD DRAWN 9/96 CSD

No Exception Taken  Make Corrections Here

Revise and Resubmit  Not Acceptable

Reviewed only for general conformance with the design intent of the project and general compliance with the applicable code. It is the responsibility of the contractor to verify all dimensions and performing the work in a satisfactory manner.

NOTAR AND JOHNSON ENGINEERS, INC.  
Date 11/11/04 BY JPS