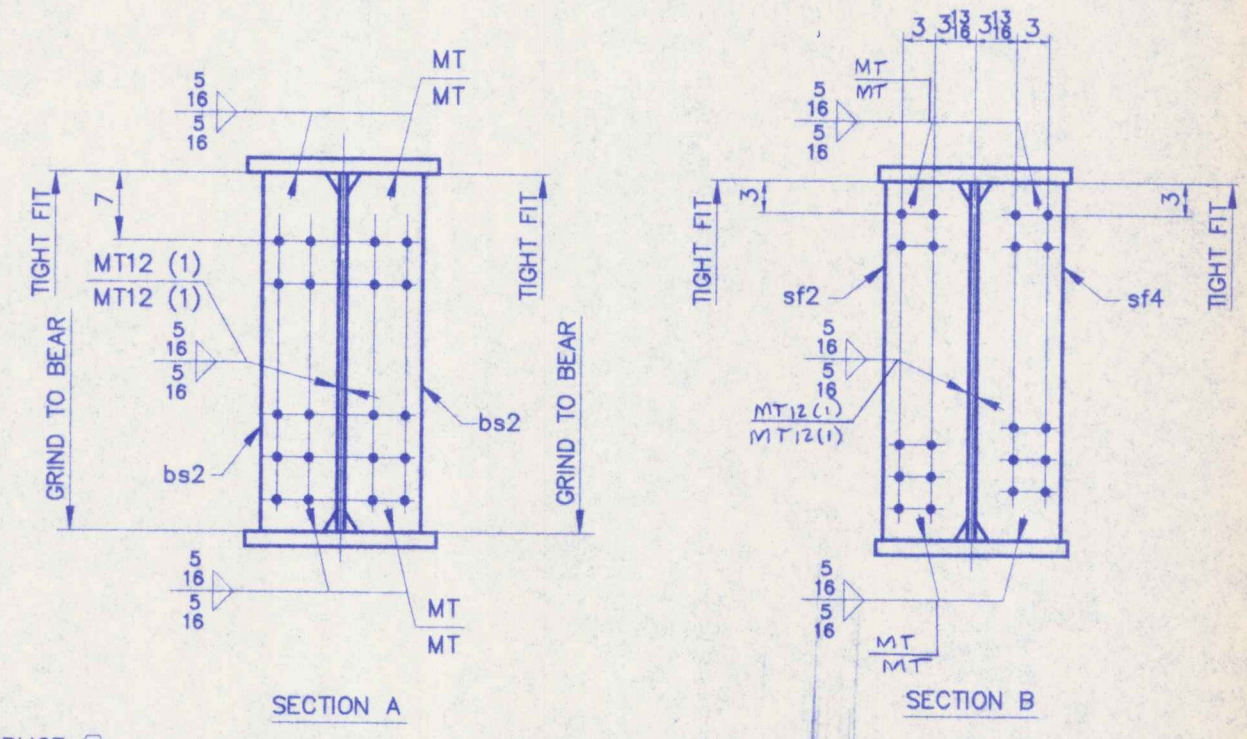


SHIP BILL OF MATERIAL				WORK ORDER NO.	DRAWING NO.	REV.	
MARK	NO.	MARK	SHAPE	LENGTH	ITEM NO.	WT.	REMARKS
G5A	ONE		GIRDER				
	1	wp1	E 3/8 x 60	103 10	1	3.1228	(CVN)
	1	tf1	E 1 1/8 x 18	103 7 3/4	1	8.7142	(CVN)
	1	bf1	E 1 1/8 x 18	103 8 1/4	1	7.145	(CVN)
	2	bs2	E 3/8 x B 1/2	5 0	2	2.52	F2E
	4	sf2	E 1/2 x B	5 0	2	2.72	F1E
	4	sf4	E 1/2 x B	5 0	2	2.72	F1E



NOTES

FOR APPROVAL

- FOR CAMBER DIAGRAM SEE DRAWING 10-4.
- FOR GIRDER STANDARD DETAILS SEE DRAWING 10-3.
- (CVN) DENOTES CHARTY TEST REQUIRED.

STEEL: ASTM A36 A572 GR A501 (OR 150) Unless Noted

WELDING ELECTRODE: E70 See Welding Proc. None

HOLES: 13/16 15/16 1-1/16 Unless Noted As Noted None

PAINT: None Shop Coat Galv. After Fab. Unless Noted

SPECIAL PAINT: SEE SHEET 10-1

SPECIAL CLEANING: Blast Clean SSPC SP10 None

ITEM NO. 506.55 BRIDGE NO. 44 PROJ. NO. BRS-RS 0113 (8)

TITLE: GIRDER ~ G5A

APPROVED:

PRINT DIST: 11-2-96 APPR. 11-3-96 FAB. 11-18-96 APP

JOB: U.S. ROUTE 5 OVER BLACK RIVER SPRINGFIELD, VERMONT

CUSTOMER: WINTERSETT, INC.

DESIGNER: VERMONT AGENCY OF TRANSPORTATION

WORK ORDER NO. 15713 DRAWING NO. 10-11

CHECKED 10/16 CSD DRAWN 9/96 CSD

No Exception Taken Make Corrections Noted

Review and Re-submit Not Acceptable

Reviewed only for general conformance with the design concept of the project and general compliance with the information shown on the contract documents. The user remains responsible for obtaining and checking all quantities and dimensions and performing his work in a satisfactory manner.

MUFALAND-JOHNSON ENGINEERS, INC.
 12/14/96 BY SPK