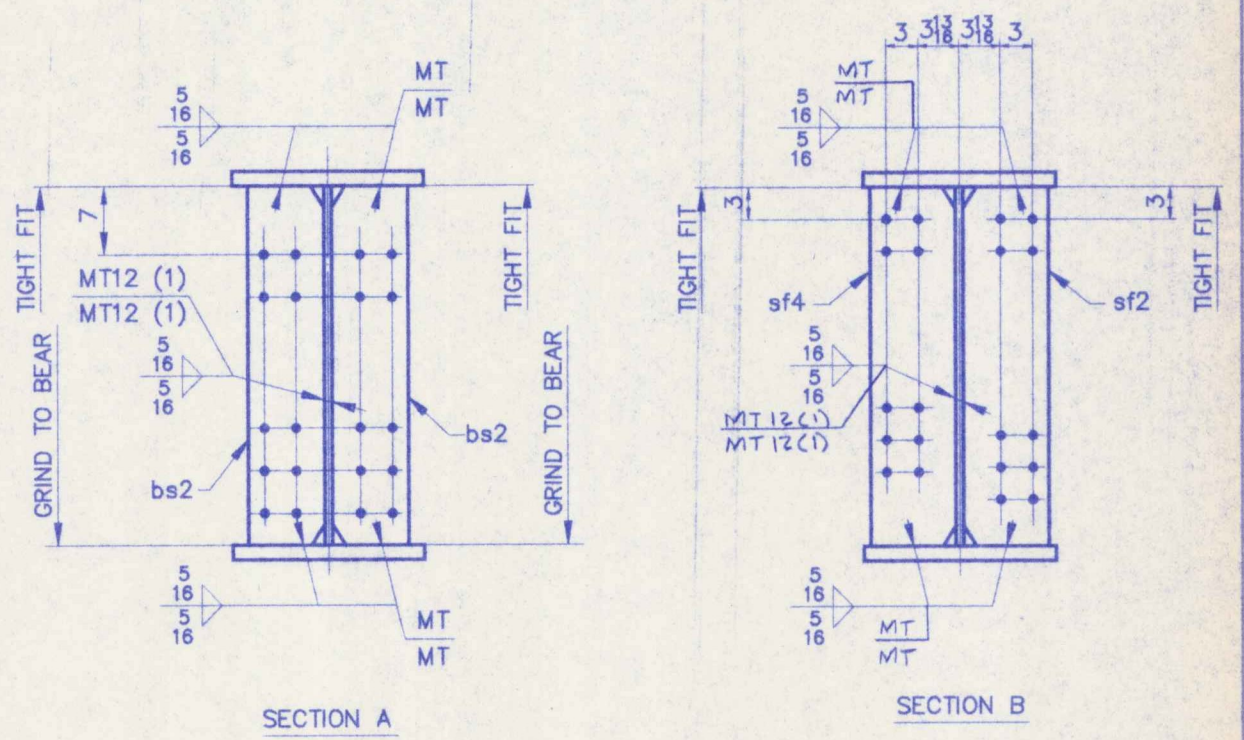


BILL OF MATERIAL				WORK ORDER NO.	DRAWING NO.	REV.	
				15713	10-9		
SHIP MARK	NO.	MARK	SHAPE	LENGTH	ITEM NO.	WT.	REMARKS
G3A	ONE		GIRDER				
	1	wp1	E 3/8 x 60	103 10	1	3 18 228	(CVN)
	1	tf1	E 1 1/8 x 18	103 7 1/2	1	6 742	(CVN)
	1	bf1	E 1 1/8 x 18	103 8 1/2	1	5 714	(CVN)
	2	bs2	E 3/8 x 8 1/2	5 0	2	2 853	F2E
	4	sf2	E 1/2 x 8	5 0	2	2 72	F1E
	4	sf4	E 1/2 x 8	5 0	2	2 72	F1E



NOTES

FOR APPROVAL

- FOR CAMBER DIAGRAM SEE DRAWING 10-4.
- FOR GIRDER STANDARD DETAILS SEE DRAWING 10-3.
- (CVN) DENOTES CHARTY TEST REQUIRED.

STEEL: ASTM A36 A572 GR A709 (GR 50W) Unless Noted

WELDING ELECTRODE: E70 See Welding Proc. None

HOLES: 1 1/2" 1 5/16" 1 1/4" 1 1/8" 1" As Noted None

PAINT: None Shop Coat Gov. After Fab. Unless Noted

SPECIAL PAINT: SEE SHEET 10-1

SPECIAL CLEANING: Blast Clean SSPC SP10 None

ITEM NO. 506.55 BRIDGE NO. 44 PROJ. NO. BRS-RS 0113 (8)

TITLE: GIRDER ~ G3A

APPROVED: PRINT DIST. **NE** National Eastern Corporation
 12-18-96 APPR. 12-3-96 FAB. 5 11-8-96 ADP
 Plattsville, Connecticut

CUSTOMER: WINTERSSETT, INC.
 DESIGNER: VERMONT AGENCY OF TRANSPORTATION

CHECKED 10/9/96 CSD DRAWN 9/96 CSD

WORK ORDER NO. 15713 DRAWING NO. 10-9 REV.

No Exception Taken Make Corrections Noted Not Acceptable

Revised only for general conformances with the design concept of the contract and general accordance with the information given in the contract documents. This drawing is not to be used for construction and detailing of work in a manufacturing plant.

MCFARLAND-HOBBS ENGINEERS, INC.
 12/12/96 BY SP4