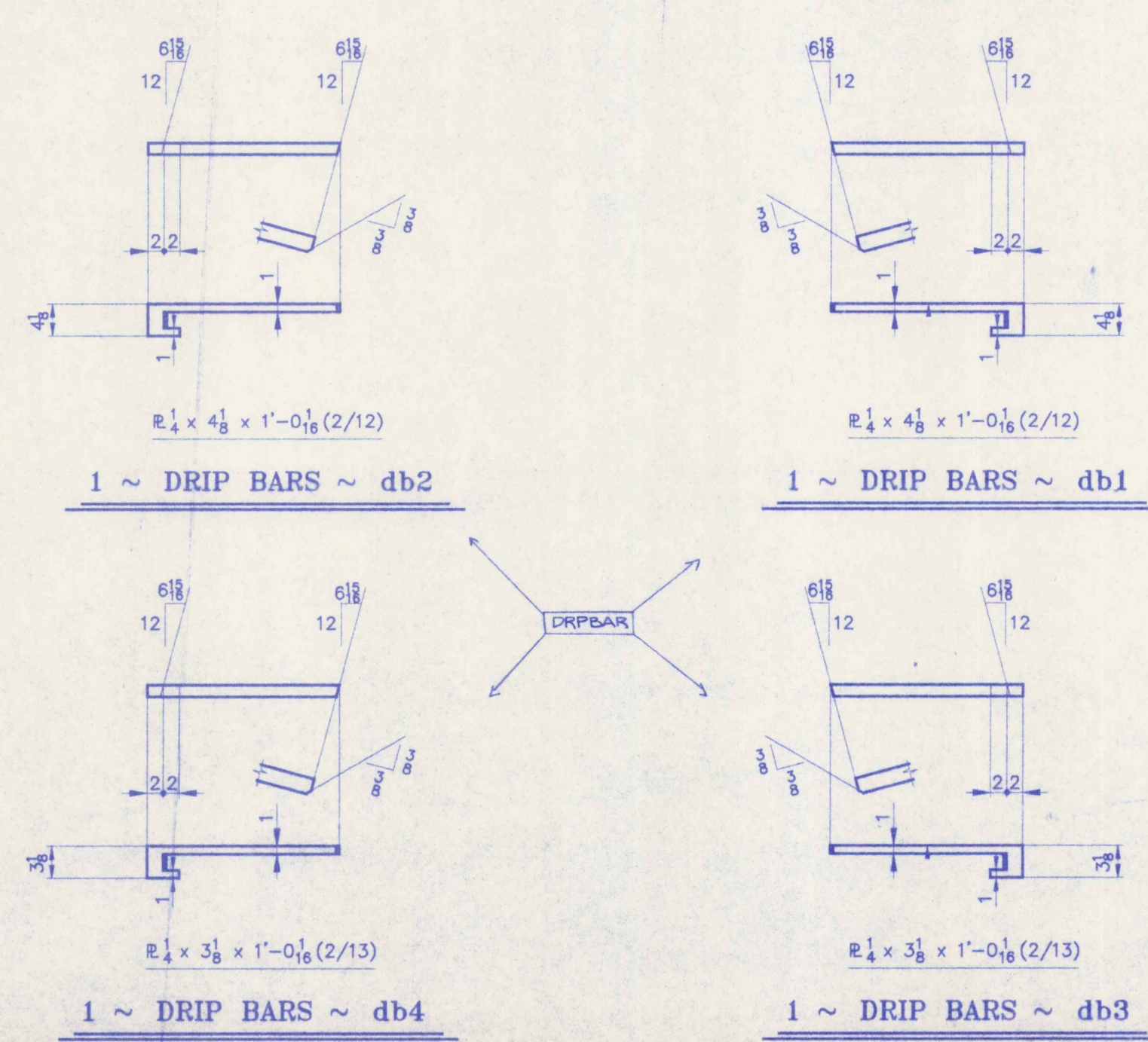
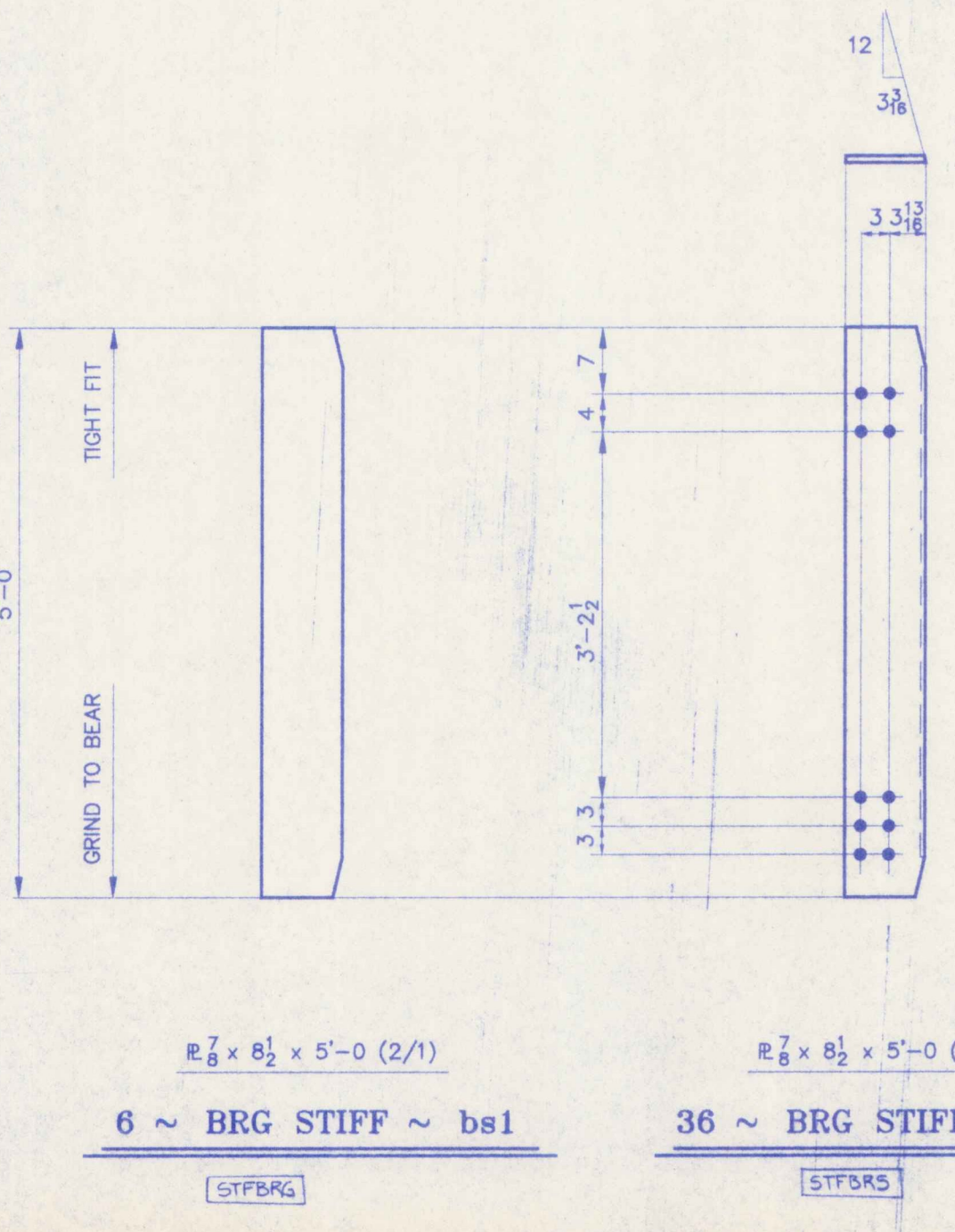
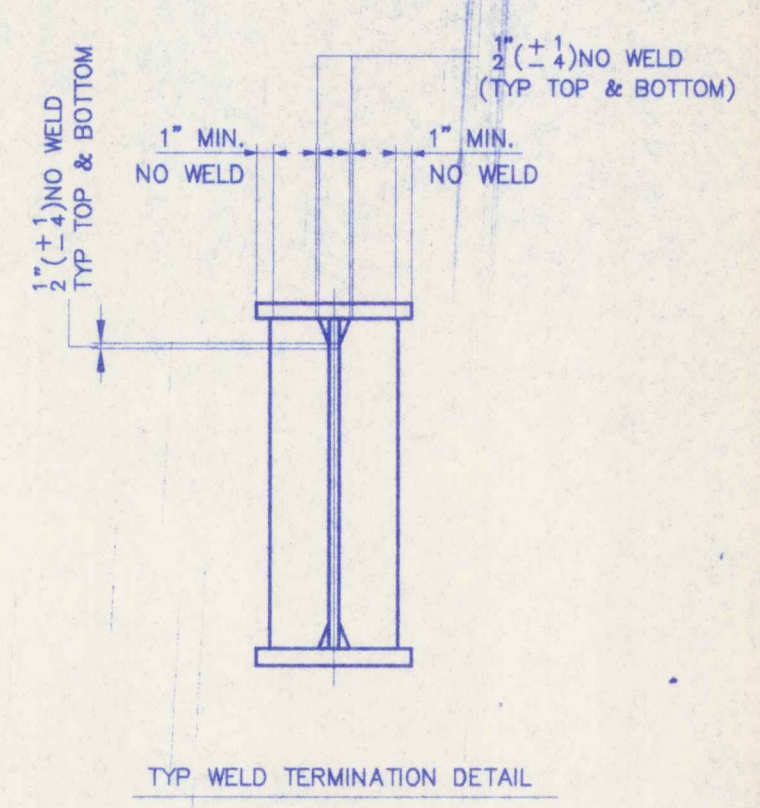
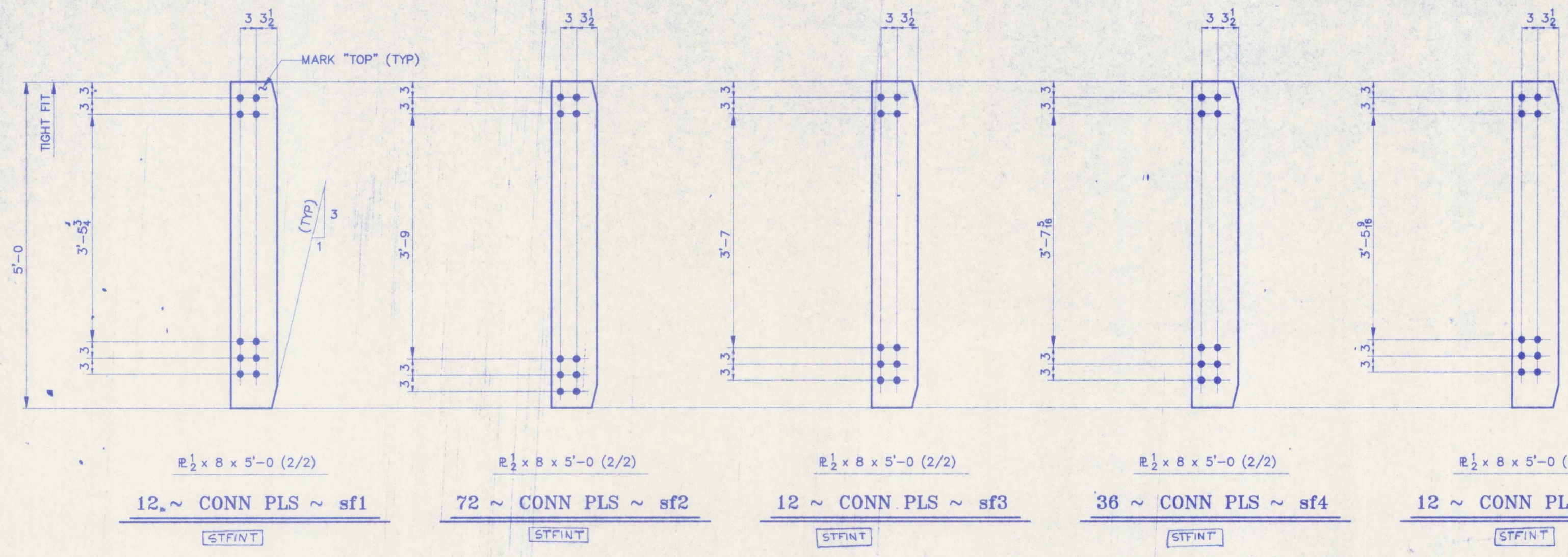


WORK ORDER NO.	DRAWING NO.	REV.
15713	10-3	



No Exception Taken Make Corrections Noted
 Revise and Resubmit Not Acceptable
 Reviewed only for general conformance with the design
 engineer of the project and general compliance with the
 specifications and the contract documents. The user
 is responsible for conformity and consistency of
 drawings and specifications and performing his work in a
 professional manner.
 McFARLAND-JOHNSON ENGINEERS, INC.
 Date 12/11/96 BY SM6

NOTES
 1. ALL HOLES SHALL BE 1/8" Ø.
 2. ALL MATERIAL SHALL BE A709 GR 50W.

FOR APPROVAL

ITEM NO.	506.55	BR. NO.	44	PROJ. NO.	BRS-RS 0113 (8)
TITLE:	GIRDER STANDARDS				
APPROVED:	PRINT DIST.				
5	10-14-96	APPR.	National Eastern Corporation Plainville, Connecticut		
ORIG	12-2-96	FAB.	JOB: U.S. ROUTE 5 OVER BLACK RIVER SPRINGFIELD, VERMONT		
5	1/8/96	APP	CUSTOMER: WINTERSETT, INC.		
DESIGNER: VERMONT AGENCY OF TRANSPORTATION			WORK ORDER NO. 15713		
CHECKED	11/1/96	CSD	DRAWING NO.	10-3	REV.
DRAWN	9/96	CSD			