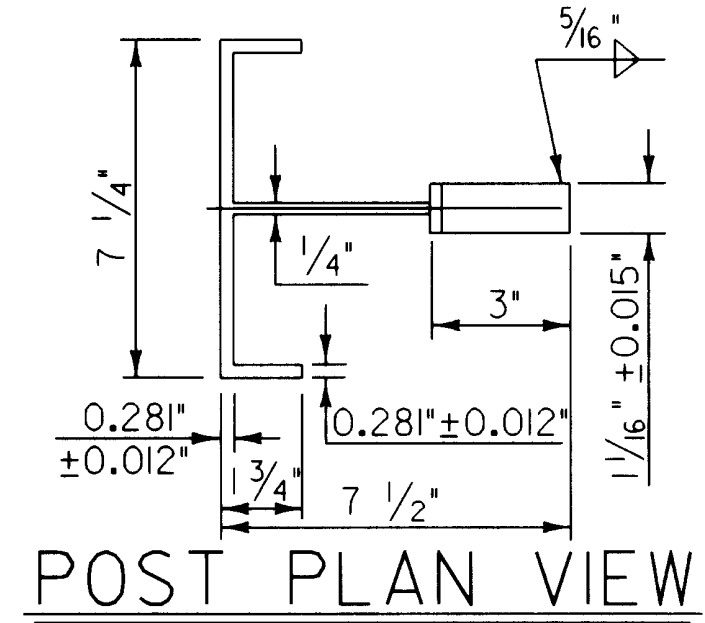
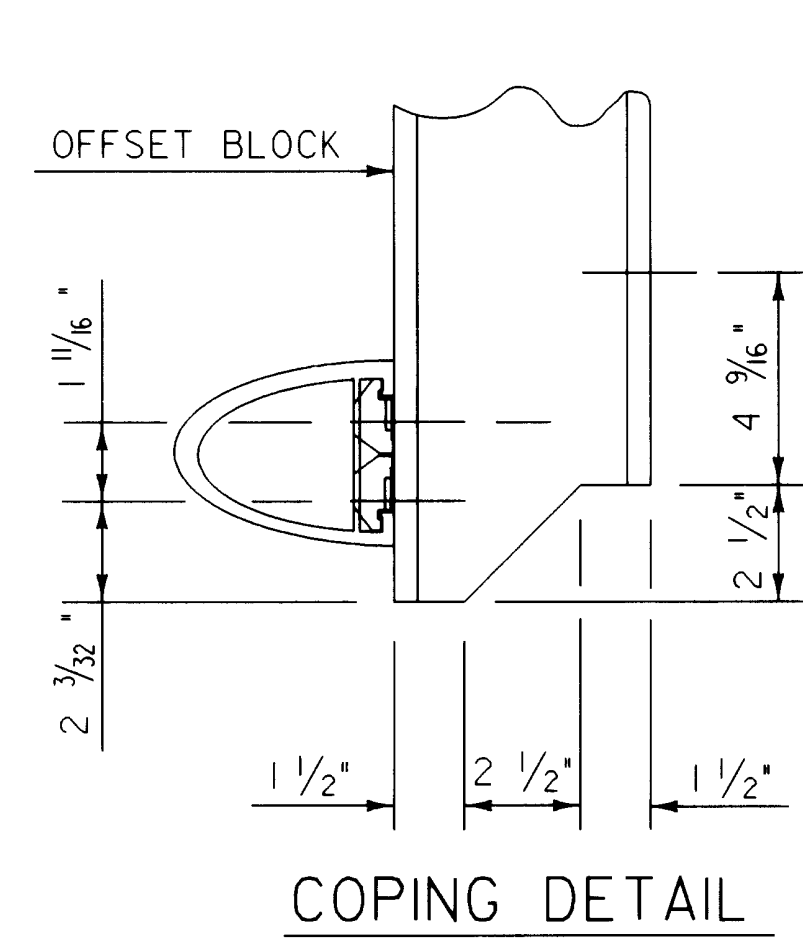


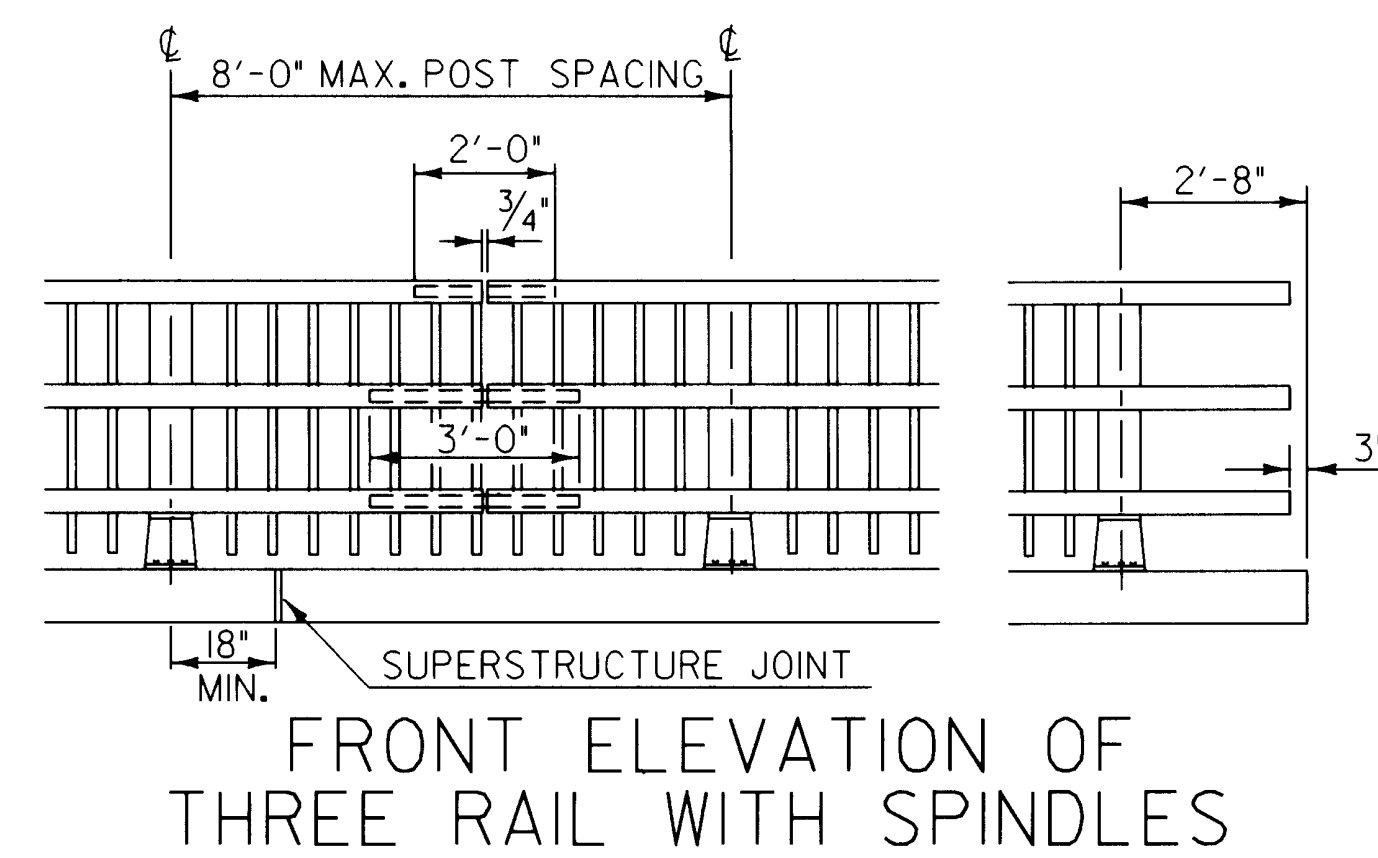
POST SIDE VIEW



POST PLAN VIEW



COPING DETAIL



FRONT ELEVATION OF THREE RAIL WITH SPINDLES

NOTE: RAIL POSTS ARE TO BE SET NORMAL TO GRADE UNLESS OTHERWISE DESIGNATED ON BRIDGE PLANS. ALL DIMENSIONS ARE TYPICAL UNLESS OTHERWISE DESIGNATED ON BRIDGE PLANS.

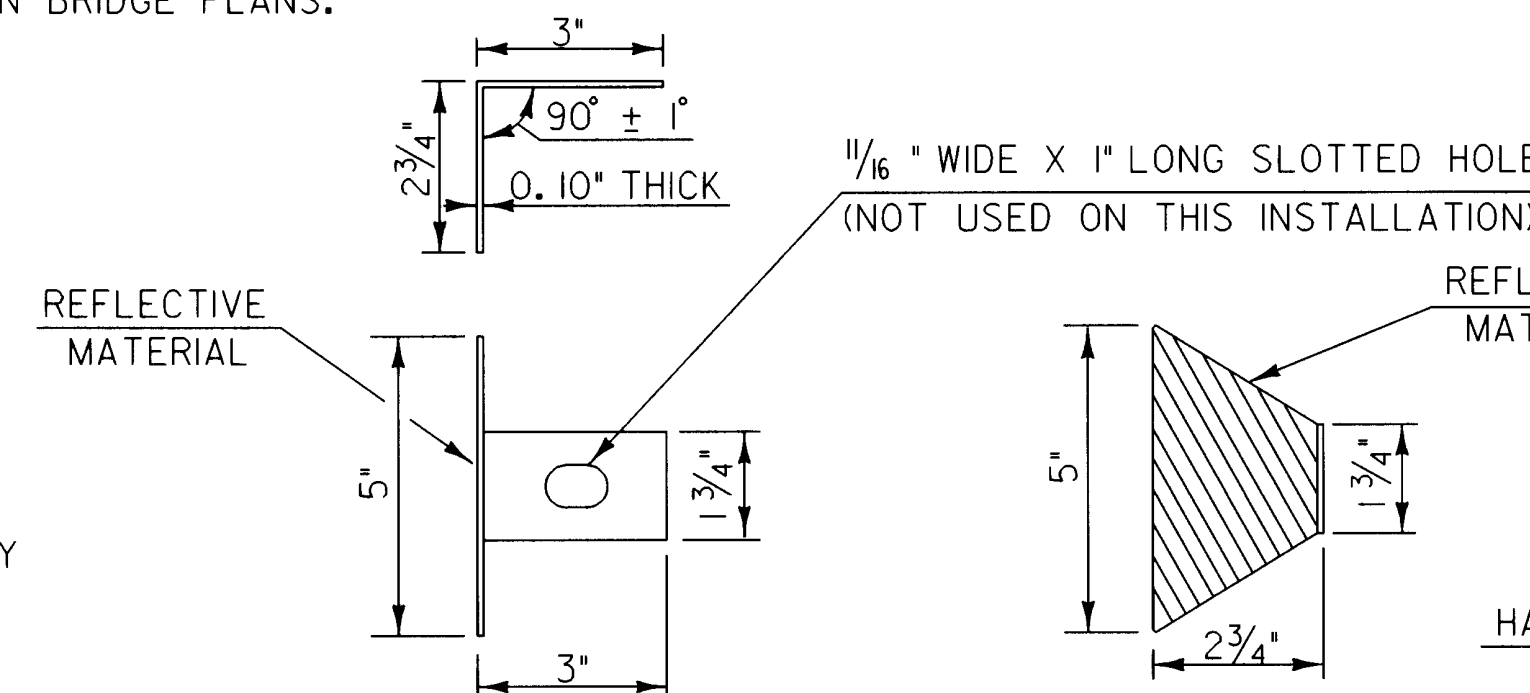
THIS REFLECTORIZED ALUMINUM DELINEATOR IS TO BE ERCTED EVERY 30 FEET (OR CLOSEST POST) WITH 2 NO. 8 X 3/4\"

DELINEATORS SHALL MEET SPECIFICATION REQUIREMENTS FOR ASTM B209 ALLOY 5052-H32.

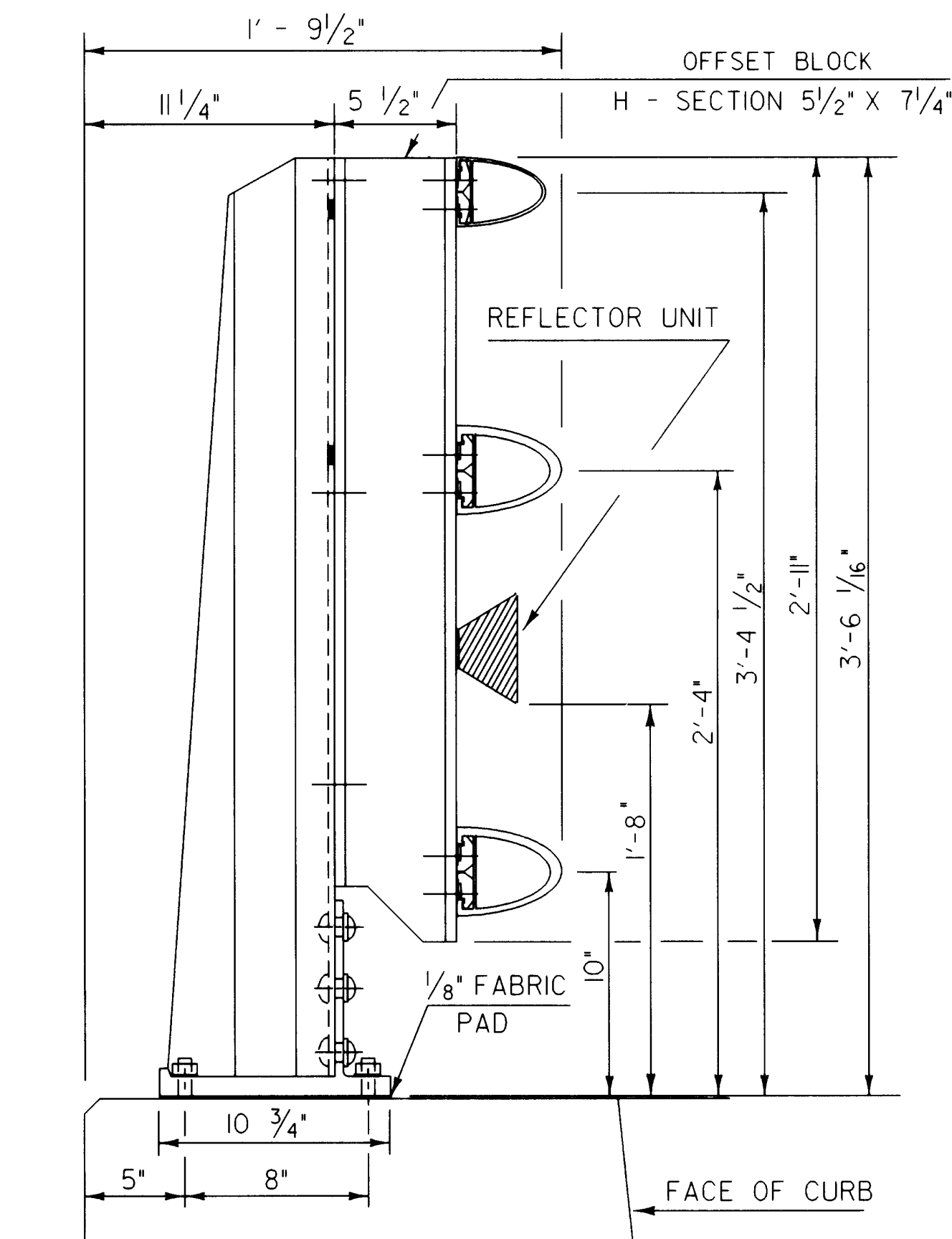
REFLECTIVE MATERIAL SHALL MEET THE REQUIREMENTS OF SUBSECTION 750.08 AND SHALL BE OF ENCAPSULATED LENS SILVER OR AMBER. AMBER IS TO BE INSTALLED ON THE DRIVER'S LEFT AND SILVER ON THEIR RIGHT.

ON BRIDGES WITH A SIDEWALK, DELINEATORS ARE NOT TO BE INSTALLED ON THE SIDEWALK SIDE OF THE BRIDGE (I.E. DELINEATORS INSTALLED ONLY ON THE CURB SIDE AND ON THE APPROACH RAIL ON THE CURB SIDE)

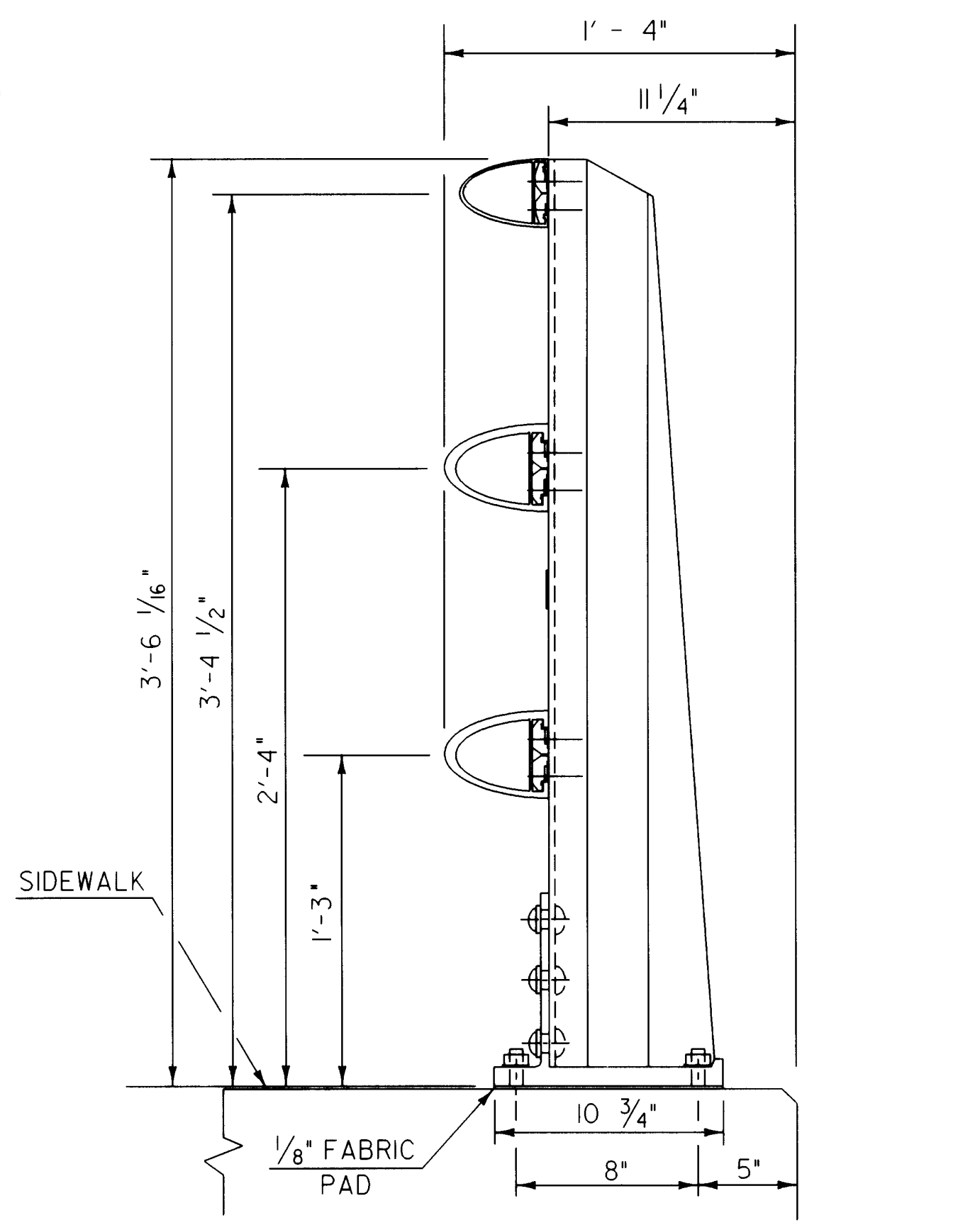
PAYMENT SHALL BE SUBSIDIARY TO ALL OTHER ITEMS.



REFLECTOR DETAILS

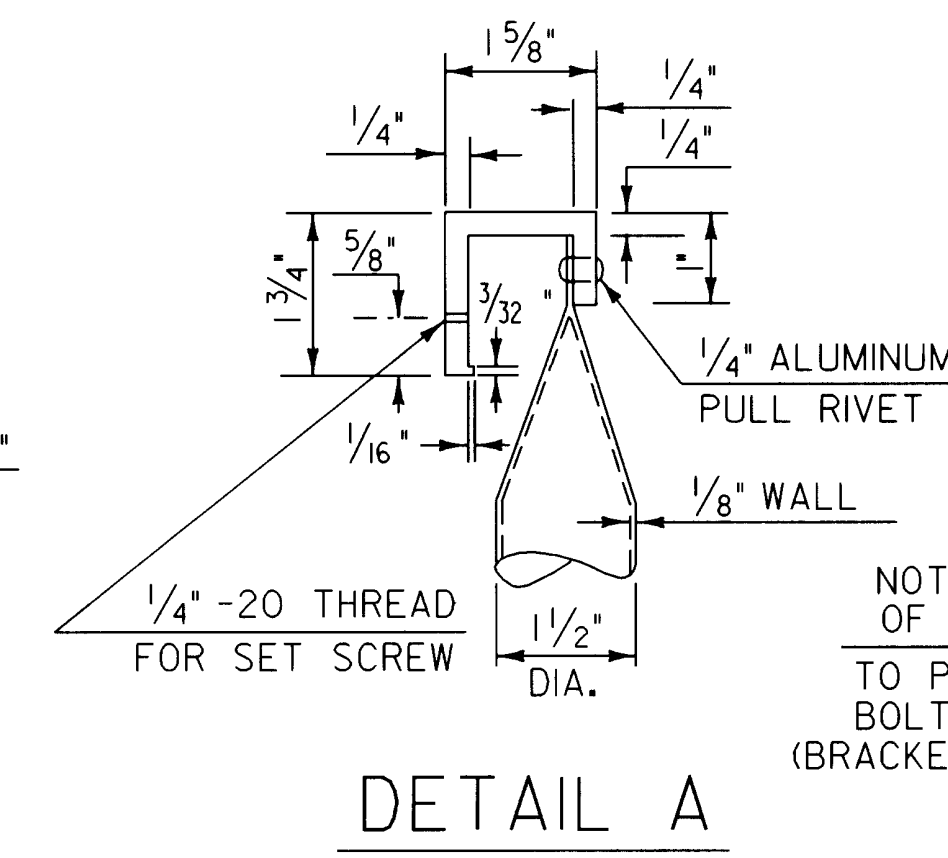


SIDE ELEVATION OF THREE RAIL TO BE USED ON CURB SIDE

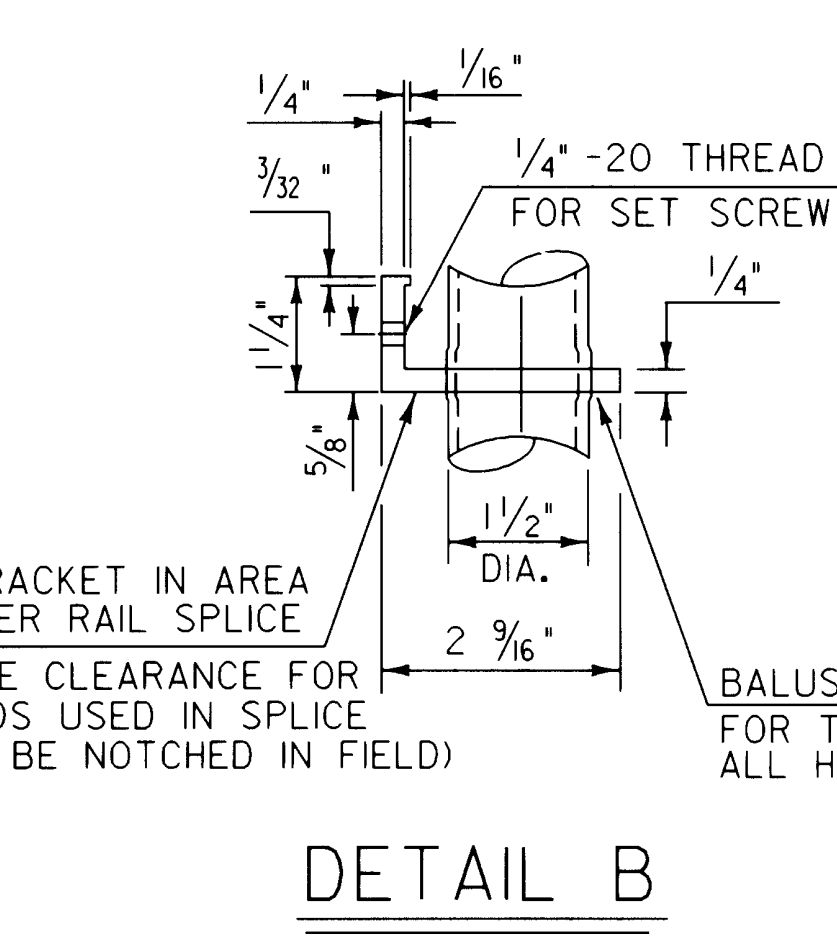


SIDE ELEVATION OF THREE RAIL TO BE USED ON SIDEWALK SIDE

RAIL POST DETAILS ON SUPERSTRUCTURE



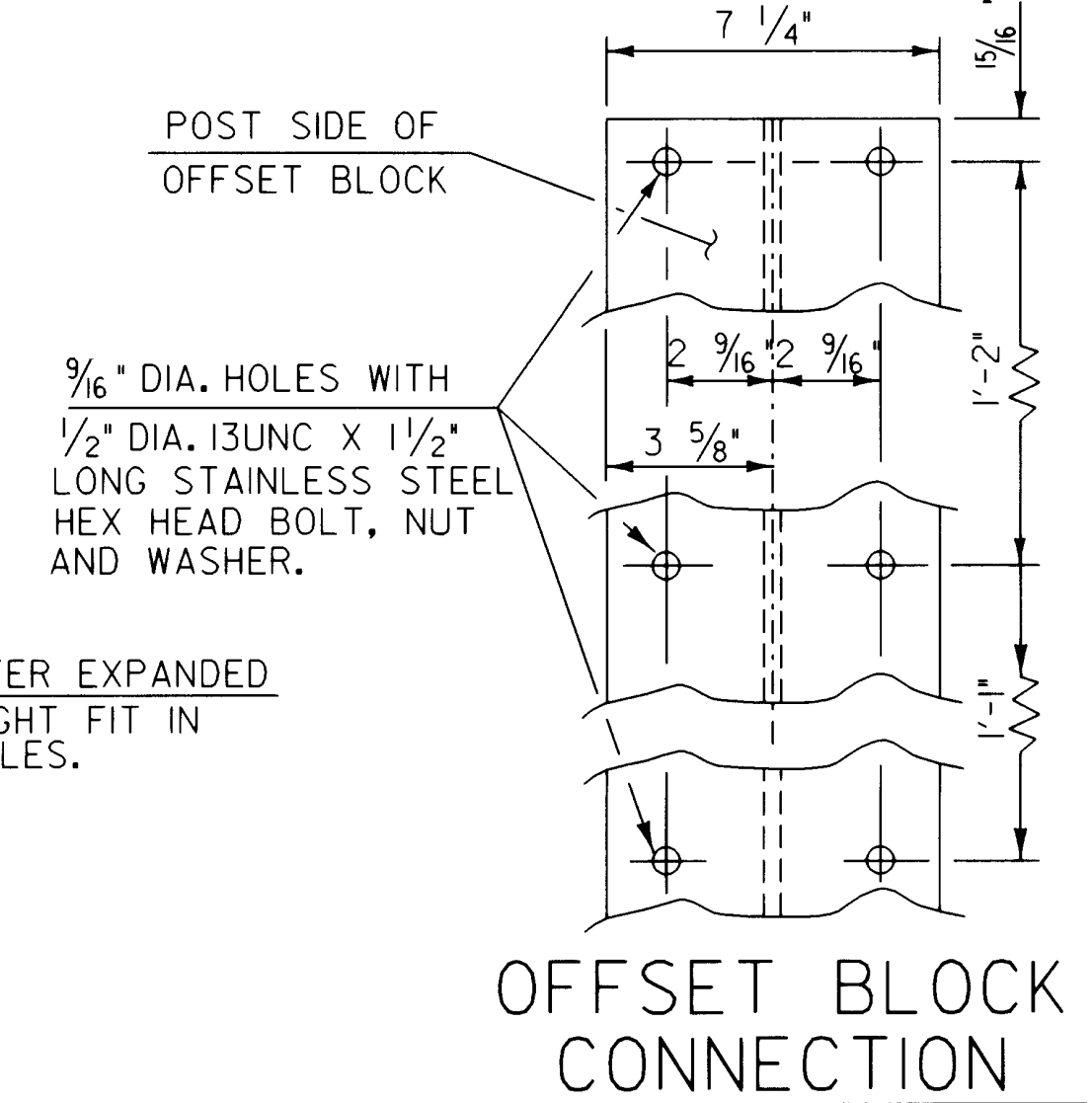
DETAIL A



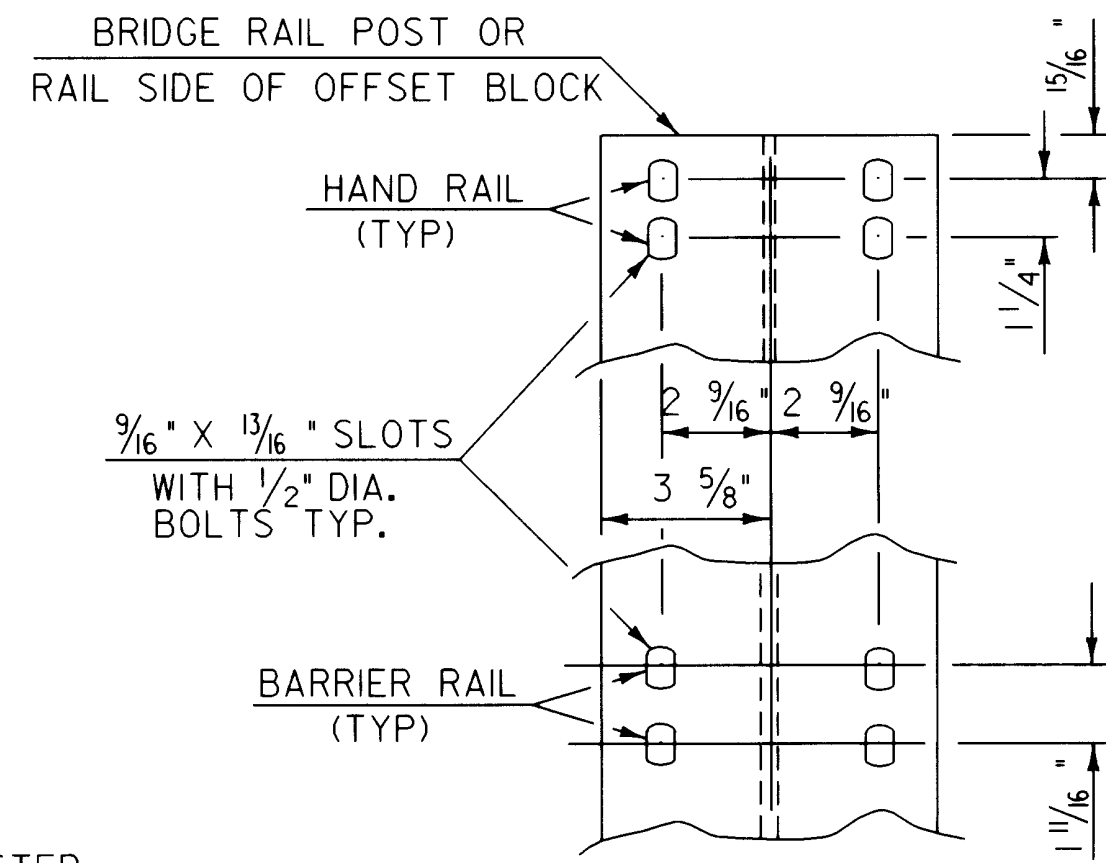
DETAIL B

NOTCH BRACKET IN AREA OF BARRIER RAIL SPLICE TO PROVIDE CLEARANCE FOR BOLT HEADS USED IN SPLICE (BRACKET TO BE NOTCHED IN FIELD)

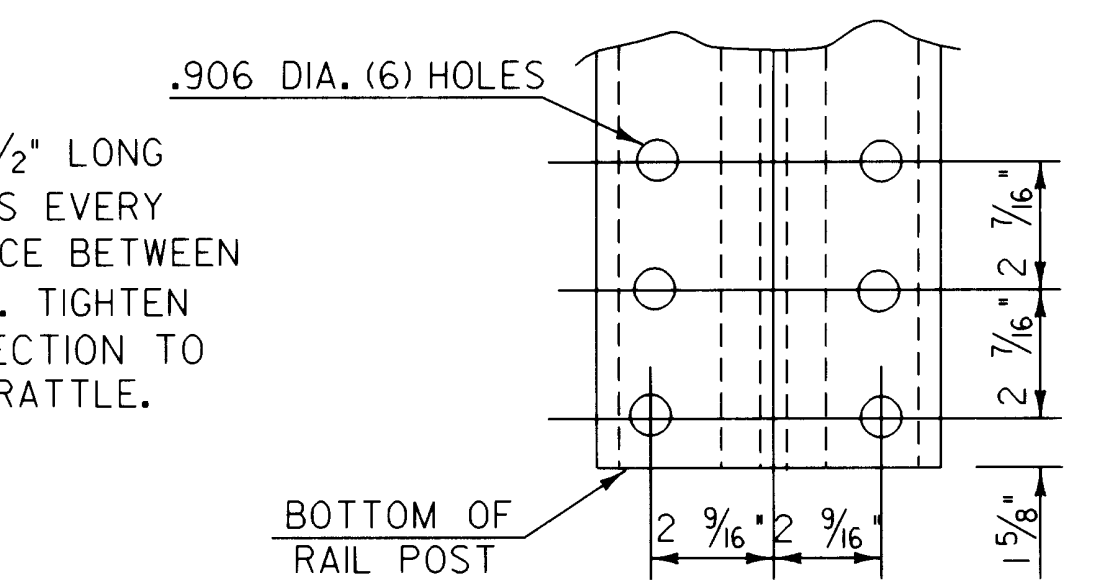
ALLOWABLE STRESSES:
RAILING : 21,000 PSI TENSION
22,000 PSI COMPRESSION
POSTS : 17,000 PSI TENSION
19,000 PSI COMPRESSION



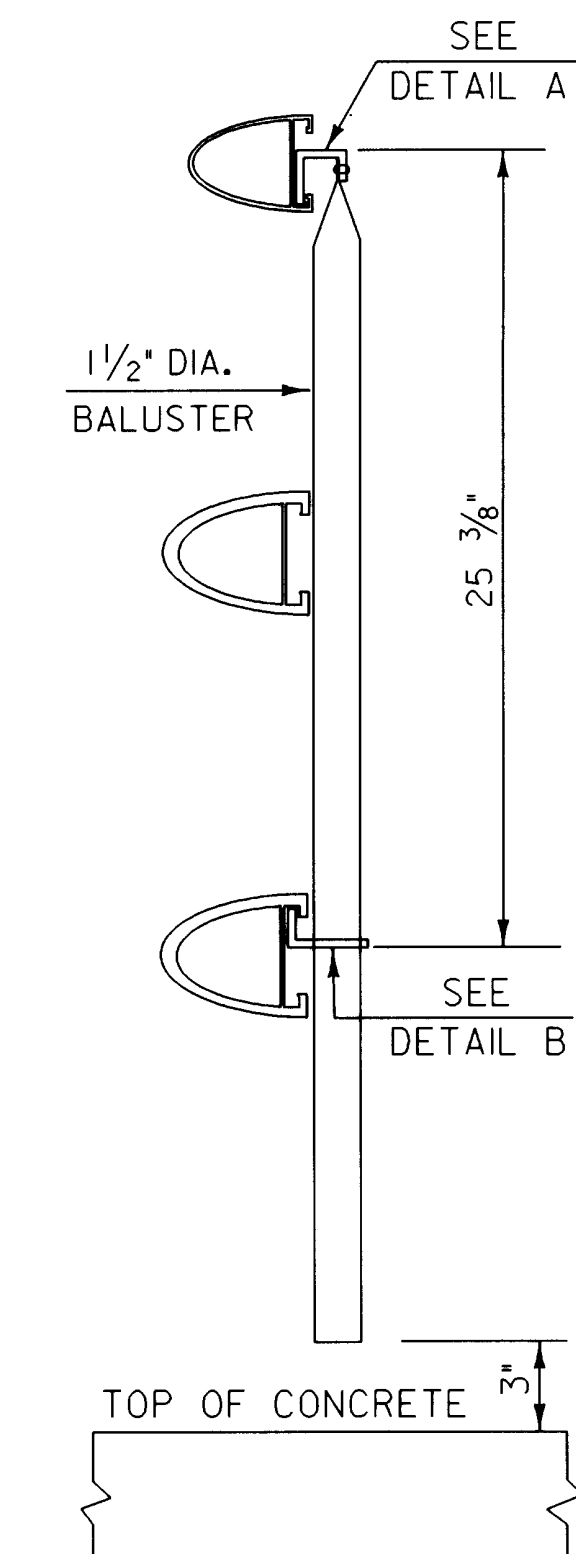
OFFSET BLOCK CONNECTION



RAIL CONNECTION

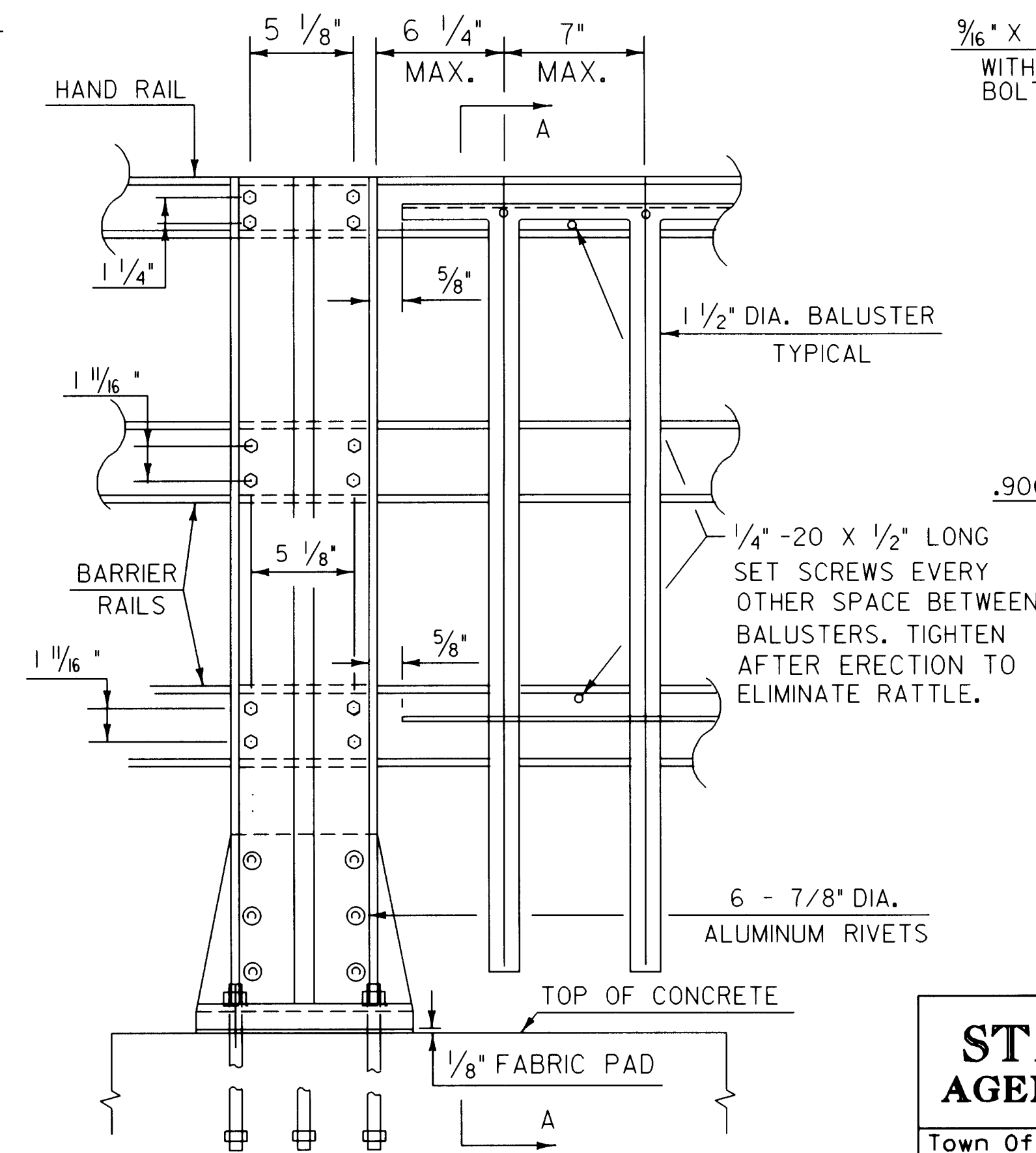


POST BASE BOLT HOLE DETAILS



SECTION AA

DETAILS OF SPINDLES FOR ALUMINUM RAILING



OUTSIDE ELEVATION OF THREE RAIL POST & SPINDLES

STATE OF VERMONT AGENCY OF TRANSPORTATION

Town Of	SPRINGFIELD	Bridge No.	44
Highway No.	U.S. ROUTE 5	Log Sta.	
		Surv. Sta.	
U.S. ROUTE 5 OVER BLACK RIVER			
ALUMINUM BRIDGE RAILING DETAILS			
Designed By	VAOT	Drawn By	VAOT
Checked By	VAOT	Date	8/95
		Bridge Design Supervisor	VAOT Date 8/95
PROJECT	SPRINGFIELD		
	PROJECT NO. BRS-RS 0113 (8)		
I.G.C. Info.	cr\usr\j9145622\sbri913d.dgn sbr191a.1		
Bridge Sheet No.	BRI30	Sheet	59 of 90