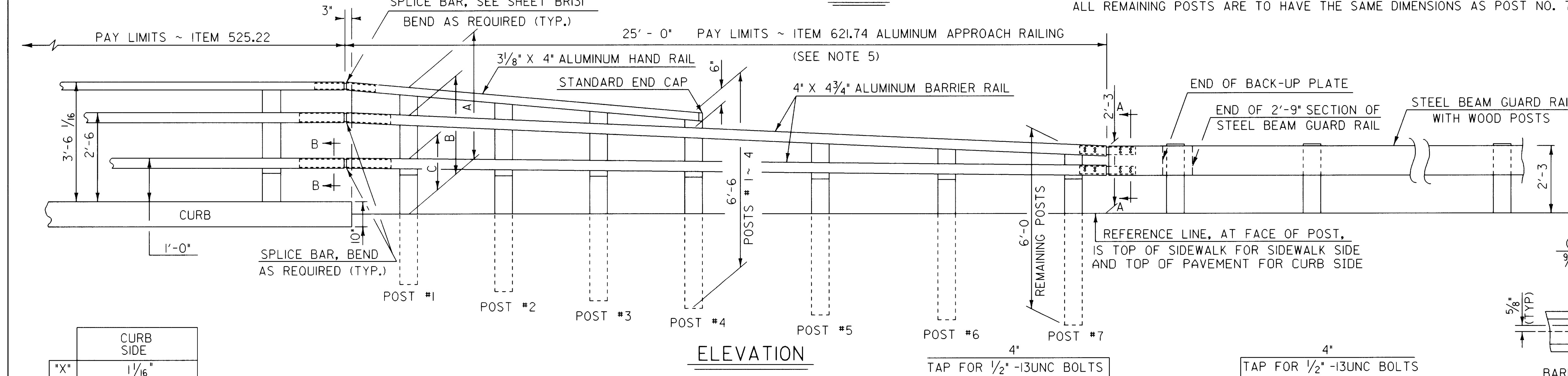


ALUMINUM APPROACH RAIL RAIL DIMENSIONS FOR A CURB CONDITION

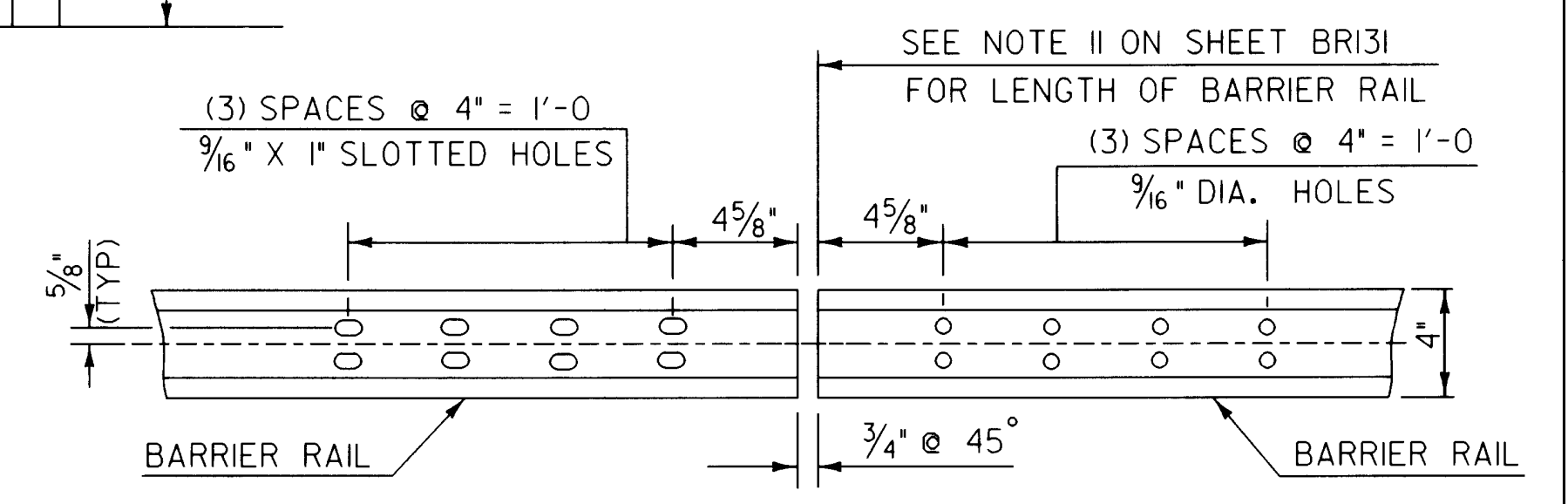
POST NO.	RAIL HEIGHT DIMENSIONS			OFFSET BLOCK DIMENSIONS			
	A	B	C	D	E	F	G
1	4'-1 7/8"	3'-2 5/16"	1'-9 3/4"	0'-11 1/16"	1'-5 1/8"	2'-9 1/8"	
2	3'-10 3/16"	3'-1 1/4"	1'-9 3/8"	0'-9 3/4"	1'-3 3/8"	2'-6 3/16"	
3	3'-7 1/4"	2'-11 9/16"	1'-9"	0'-8 1/8"	1'-2 3/16"	2'-3 3/16"	
4	3'-3 5/16"	2'-9 5/16"	1'-8 11/16"	0'-6 7/16"	1'-1 1/4"	2'-0 1/4"	
5		2'-7 1/16"	1'-8 3/16"		0'-11 9/16"		1'-4 9/16"
6		2'-5 1/2"	1'-7 1/16"		0'-9 3/16"		1'-2 13/16"
7		2'-3 3/4"	1'-7 3/16"		0'-8 1/16"		1'-1 1/16"

ALL REMAINING POSTS ARE TO HAVE THE SAME DIMENSIONS AS POST NO. 7

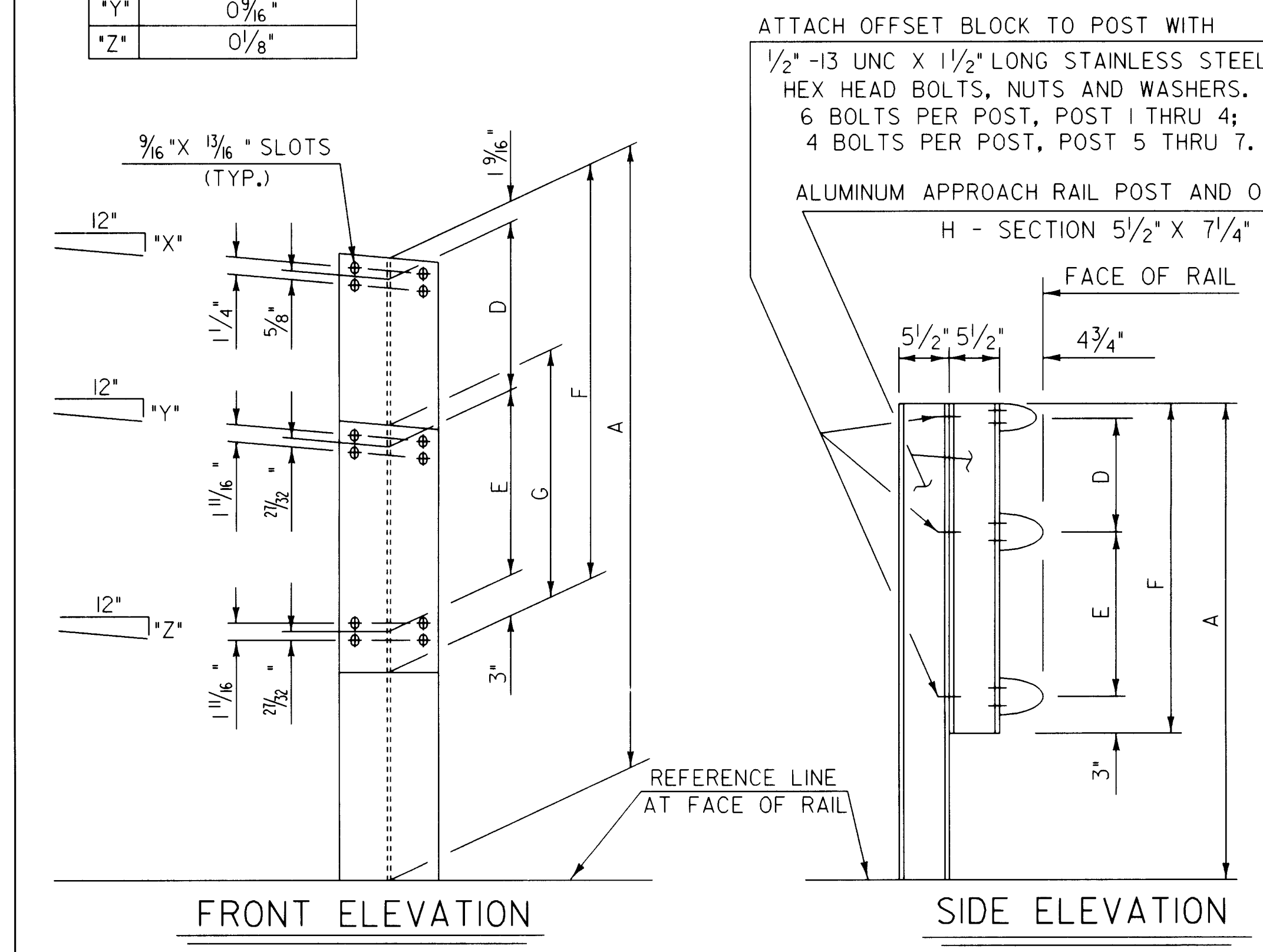
- NOTES**
- POST 1 THROUGH 7 SHALL BE EXTRUDED ALUMINUM.
 - ALL STRUCTURAL STEEL SHALL BE AASHTO M270 GRADE 36 GALVANIZED AFTER FABRICATION.
 - ALL ITEMS NOT OTHERWISE INDICATED SHALL MEET THE SPECIFICATION REQUIREMENTS OF THE STANDARD SHEETS ON WHICH THEY ARE DETAILED.
 - SEE STANDARD G-1 FOR STEEL BEAM GUARD RAIL DETAILS. SEE SHEETS BR130 AND BR131 FOR ALUMINUM BRIDGE RAILING DETAILS.
 - THE COST OF ALL MATERIALS AND LABOR FOR THE SPLICE BETWEEN THE ALUMINUM APPROACH RAILING AND THE STEEL BEAM GUARD RAIL SHALL BE SUBSIDIARY TO ITEM 621.74, ALUMINUM APPROACH RAILING.
 - DETAILS ARE SHOWN FOR TRANSITION TO A 3 RAIL ALUMINUM BRIDGE RAILING.
 - DIMENSIONS SHOWN ARE FROM A REFERENCE LINE AT THE FACE OF POST FOR A NORMAL CROWNED SECTION. APPROPRIATE CORRECTIONS SHALL BE MADE FOR CROSS SLOPES OTHER THAN A NORMAL SECTION.



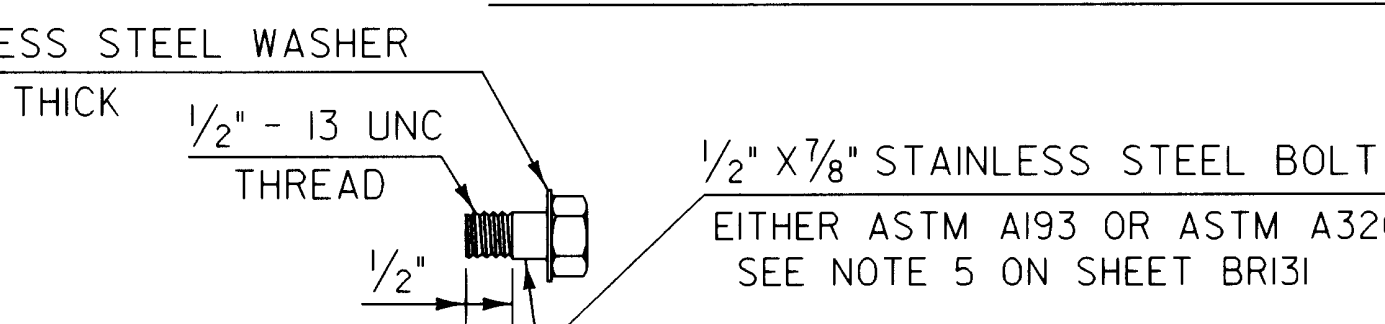
CURB SIDE	
X	1 1/16"
Y	0 9/16"
Z	0 1/8"



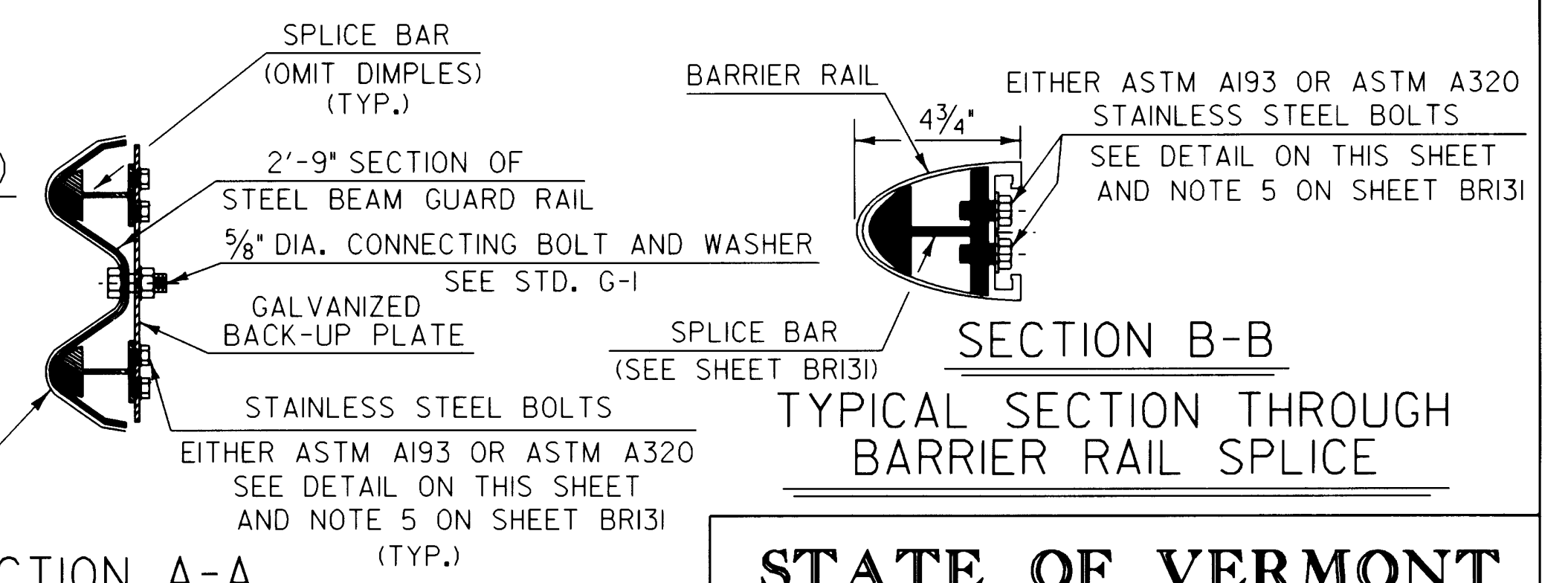
ELEVATION OF BARRIER RAIL (FROM BACK) AT ALL INTERMEDIATE RAIL SPLICES



ELEVATION OF BARRIER RAIL SPLICE BAR TO BE USED AT TRANSITION BETWEEN APPROACH RAIL & GUARD RAIL (FROM BACK)



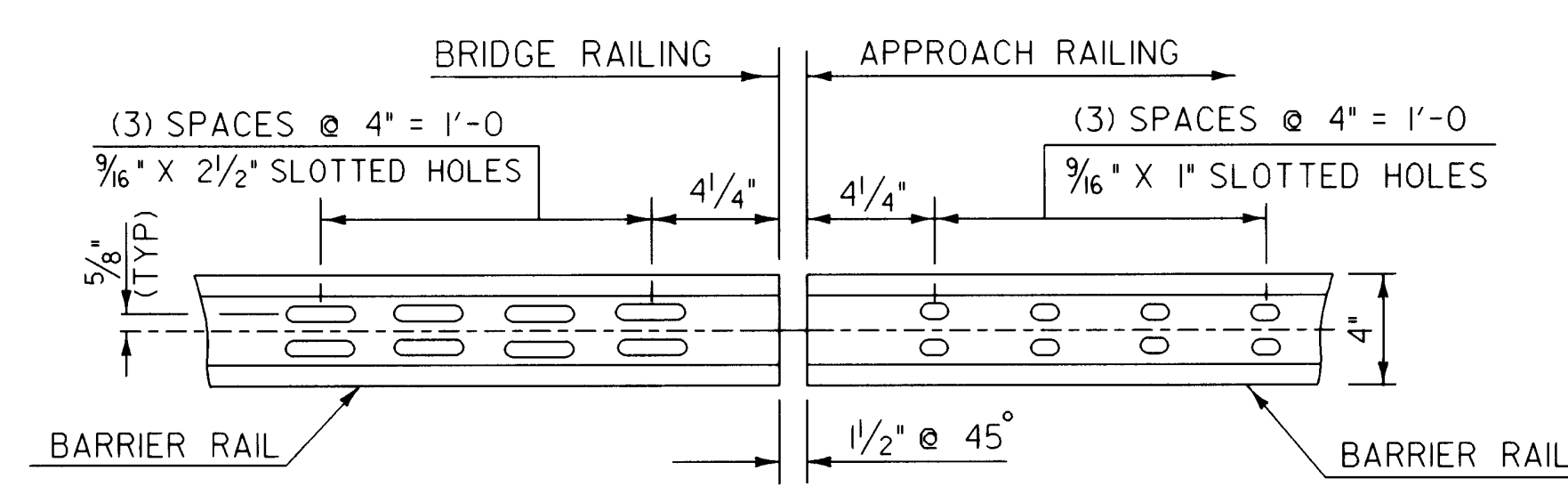
STAINLESS STEEL BOLT DETAILS



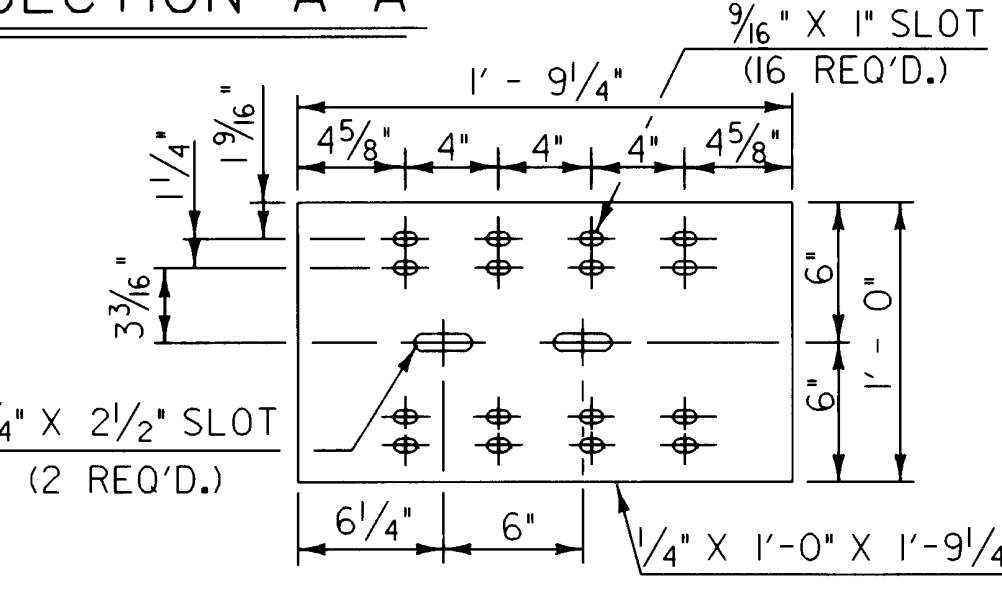
SECTION A-A

STATE OF VERMONT AGENCY OF TRANSPORTATION

Town Of	SPRINGFIELD	Bridge No.	44
Highway No.	U.S. ROUTE 5	Log Sta.	
		Surv. Sta.	
U.S. ROUTE 5 OVER BLACK RIVER			
ALUMINUM APPROACH RAILING DETAILS			
Designed By	VAOT	Drawn By	VAOT
Checked By	VAOT	Date	8/95
		Bridge Design Supervisor	VAOT Date 8/95
PROJECT		PROJECT NO.	
SPRINGFIELD		BRS-RS 0113 (8)	
I.G.C. Info.	cr\usr\j9145622\sbri913d.dgn	sbri91c.f	
Bridge Sheet No.	BR129	Sheet	58 of 90



ELEVATION OF BARRIER RAIL (FROM BACK)



BACK-UP PLATE DETAILS