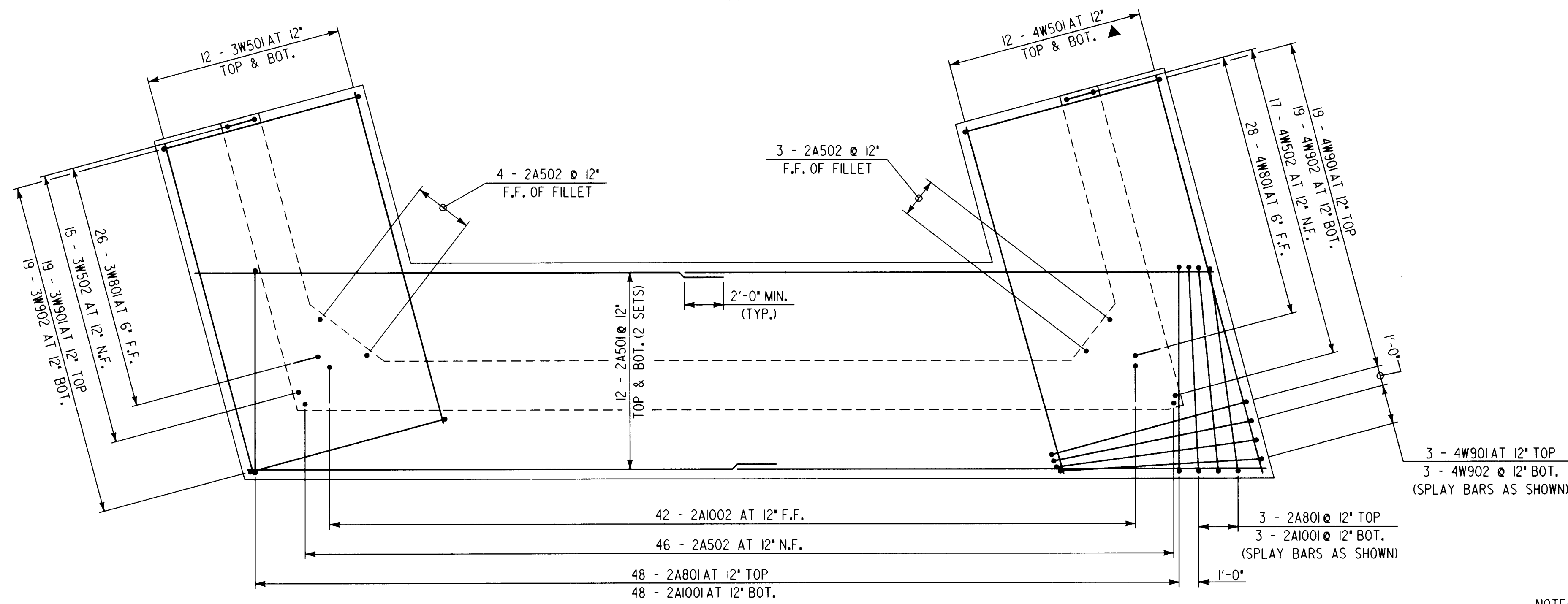


**ABUTMENT NO. 1 FOOTING REINFORCING**

SCALE: 1/4" = 1'-0"



**ABUTMENT NO. 2 FOOTING REINFORCING**

SCALE: 1/4" = 1'-0"

**NOTE:**  
N.F. - NEAR FACE  
F.F. - FAR FACE  
E.F. - EACH FACE

NOTE: REINFORCING COVER 3" CLEAR ON ALL FACES.

<b>STATE OF VERMONT AGENCY OF TRANSPORTATION</b>	
Town Of <b>SPRINGFIELD</b>	Bridge No. <b>44</b>
Highway No. <b>U.S. ROUTE 5</b>	Log Sta. <b></b>
<b>U.S. ROUTE 5 OVER BLACK RIVER</b>	
<b>ABUTMENT NO. 1 &amp; 2 FOOTING REINFORCING</b>	
Designed By <b>S. BAKI</b>	Drawn By <b>W. GAYNOR</b>
Checked By <b>S. BAKI</b>	Date <b>6-95</b>
	Bridge Design Supervisor <b>P. PIERCE</b>
	Date <b>5/96</b>
PROJECT <b>SPRINGFIELD</b>	PROJECT NO. <b>BRS-RS 0113 (8)</b>
I.G.C. Info. <b>c:\usr\j9145622\sprabuti.dgn</b>	
Bridge Sheet No. <b>BR125</b>	Sheet <b>54</b> of <b>90</b>