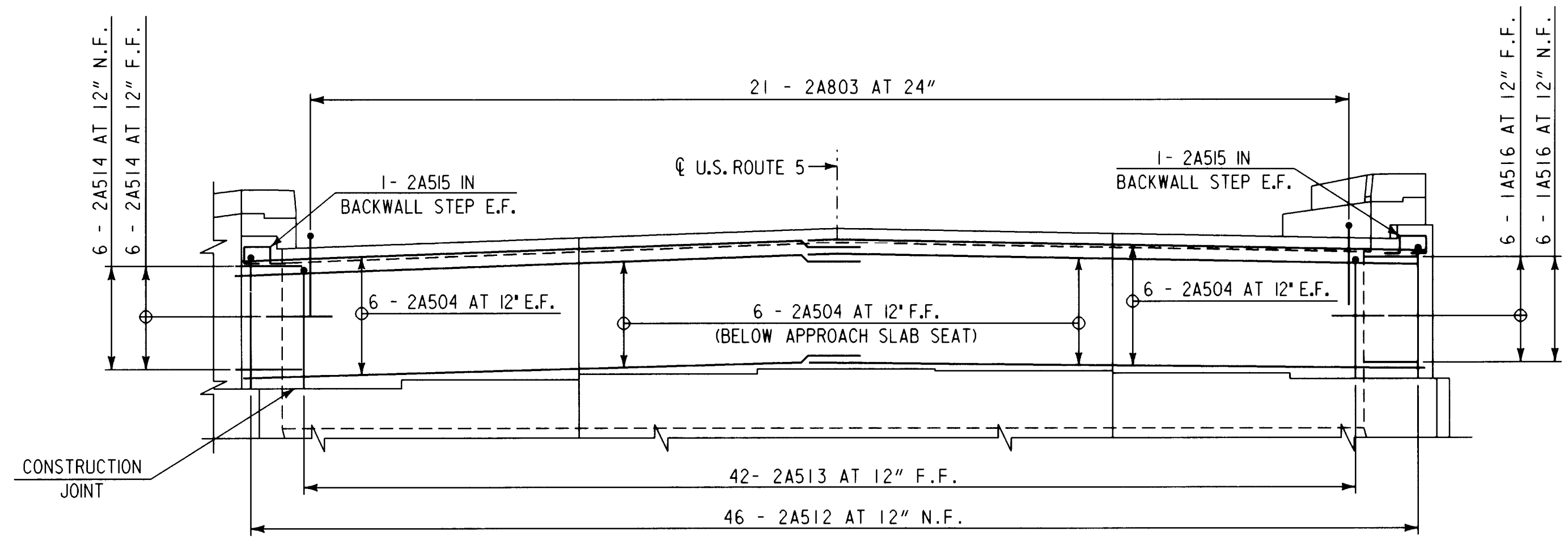


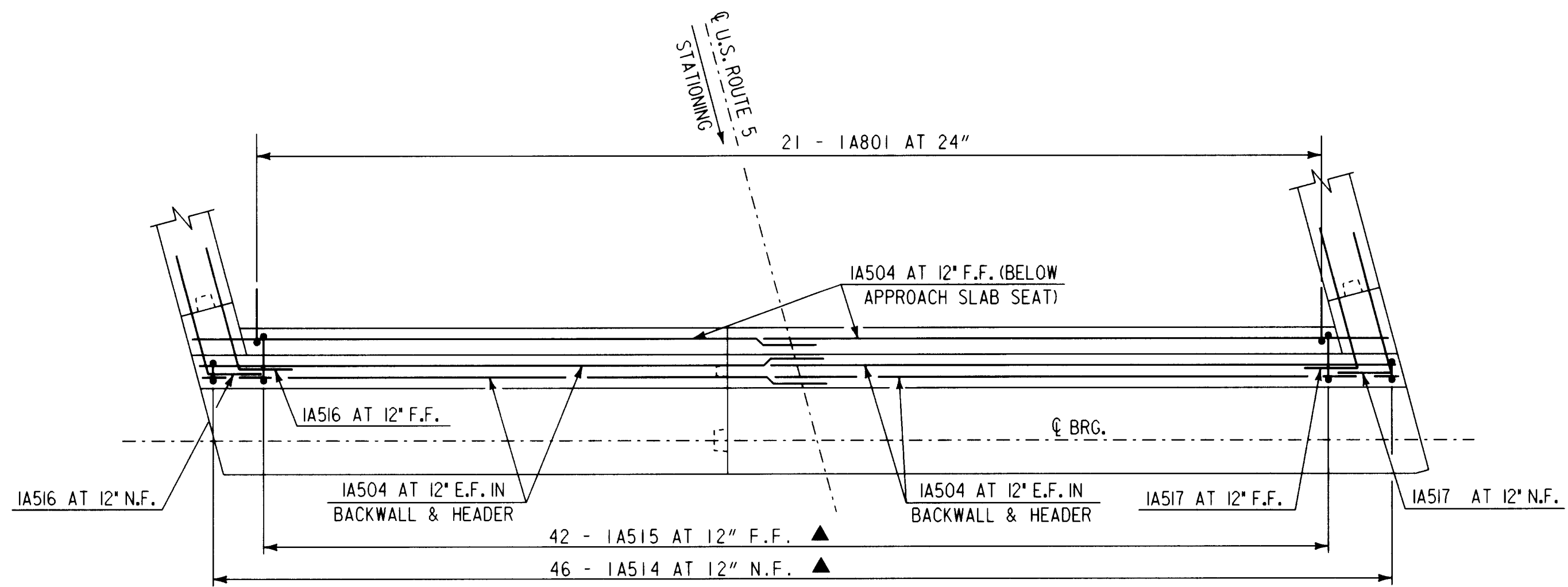
**ABUTMENT NO. 1 BACKWALL ELEVATION**

SCALE: 1/4" = 1'-0"



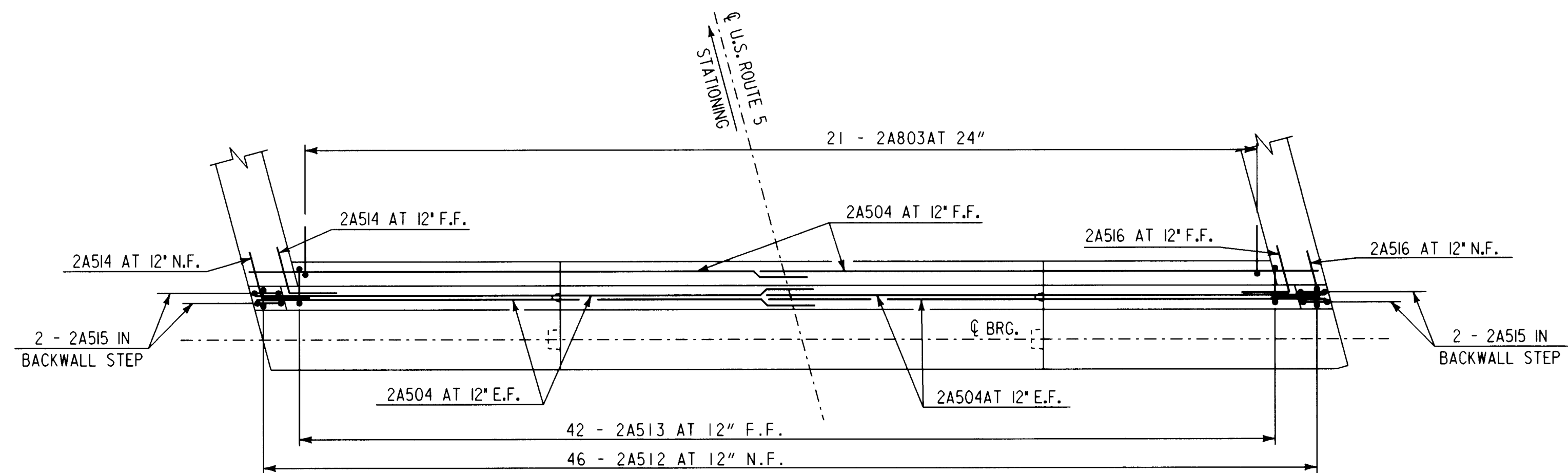
**ABUTMENT NO. 2 BACKWALL ELEVATION**

SCALE: 1/4" = 1'-0"



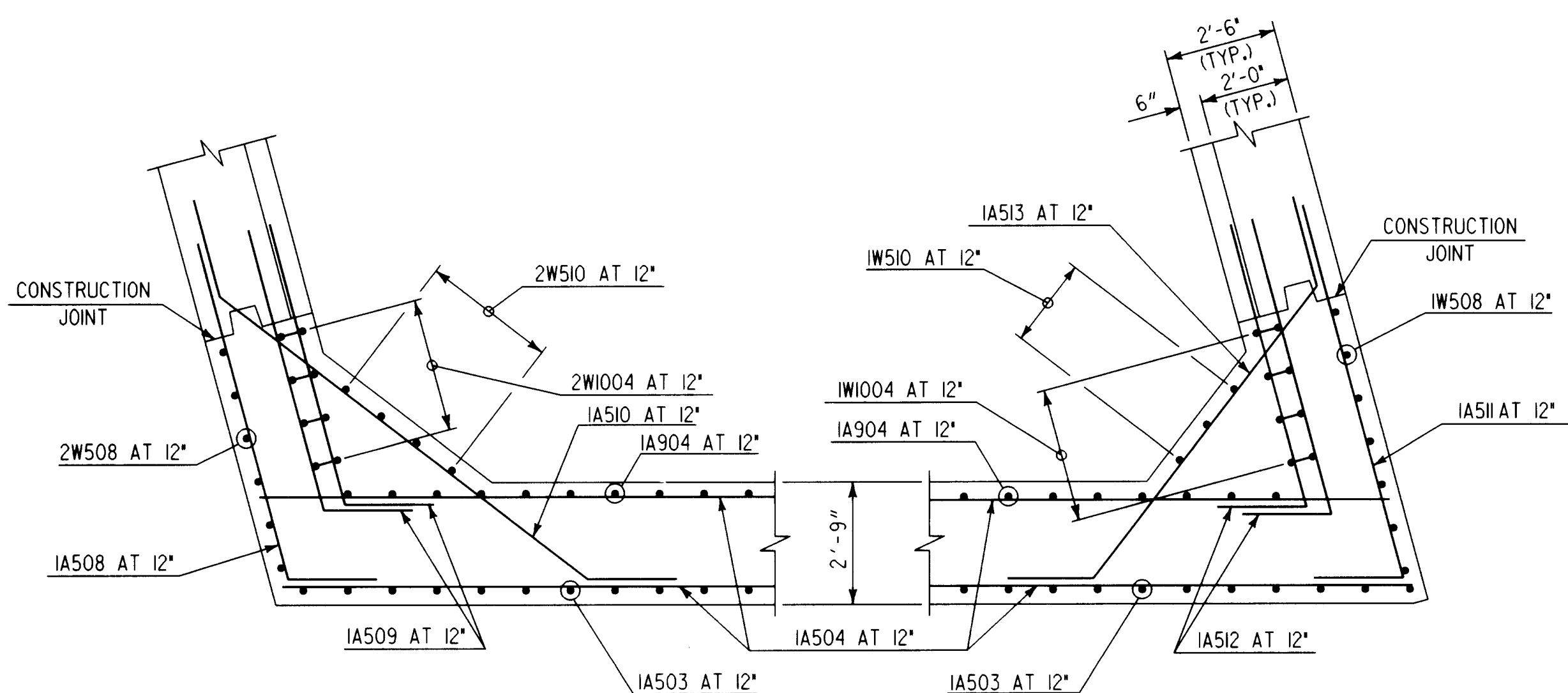
**ABUTMENT NO. 1 BACKWALL PLAN**

SCALE: 1/4" = 1'-0"



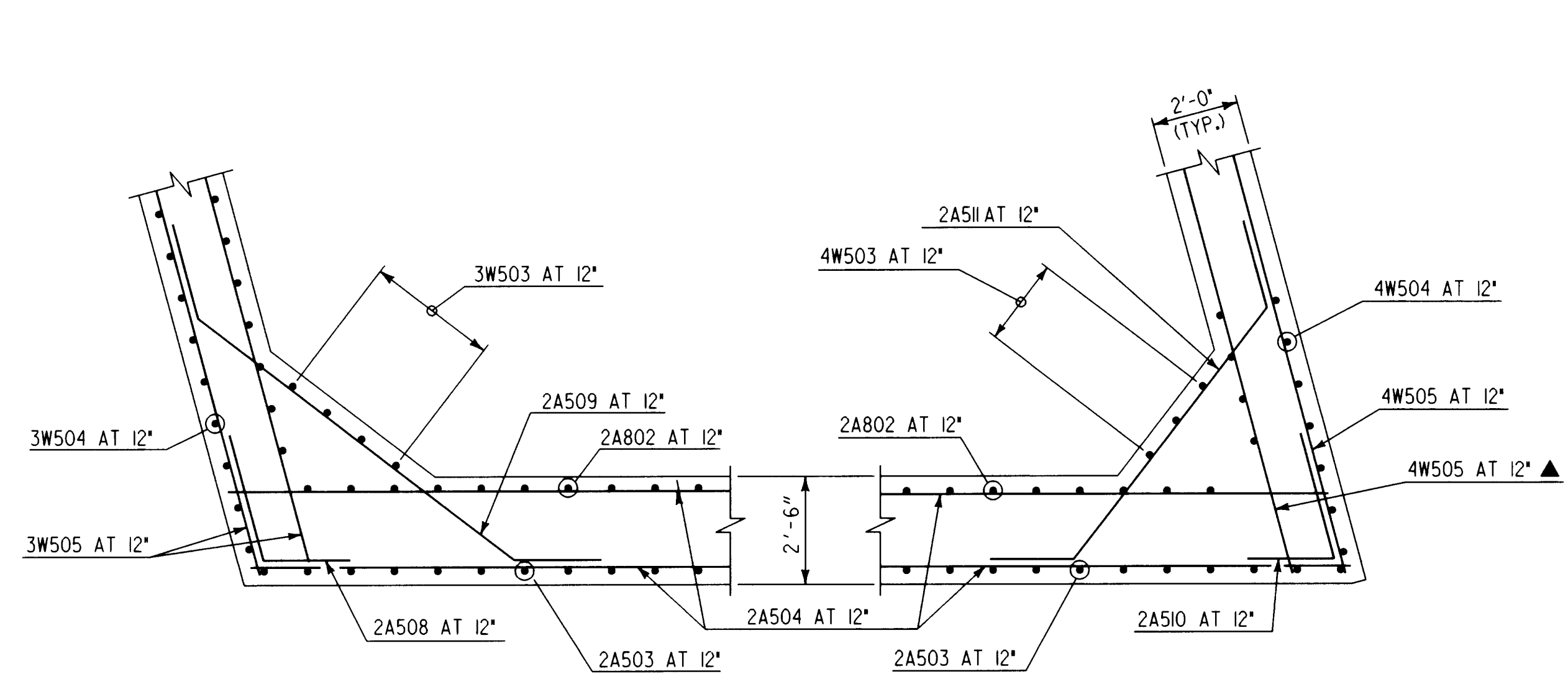
**ABUTMENT NO. 2 BACKWALL PLAN**

SCALE: 1/4" = 1'-0"



**SECTION A-A**

SCALE: 3/8" = 1'-0"



**SECTION B-B**

SCALE: 3/8" = 1'-0"

**NOTE:**  
 N.F. - NEAR FACE  
 F.F. - FAR FACE  
 E.F. - EACH FACE  
 ▲ - CUT TO FIT IN FIELD

<b>STATE OF VERMONT AGENCY OF TRANSPORTATION</b>		
Town Of	SPRINGFIELD	Bridge No. 44
Highway No.	U.S. ROUTE 5	Log Sta. Surv. Sta.
U.S. ROUTE 5 OVER BLACK RIVER		
ABUTMENT NO. 1 & 2 BACKWALL DETAILS		
Designed By	S. BAKI	Drawn By
Checked By	S. BAKI	Date
		6-95
		Bridge Design Supervisor
		P. PIERCE
		Date
		5/96
PROJECT	SPRINGFIELD	
	PROJECT NO. BRS-RS 0113 (8)	
I.G.C. Info.	c:\usr\j9145622\sprabut2.dgn	
Bridge Sheet No.	BR124	Sheet 53 of 90