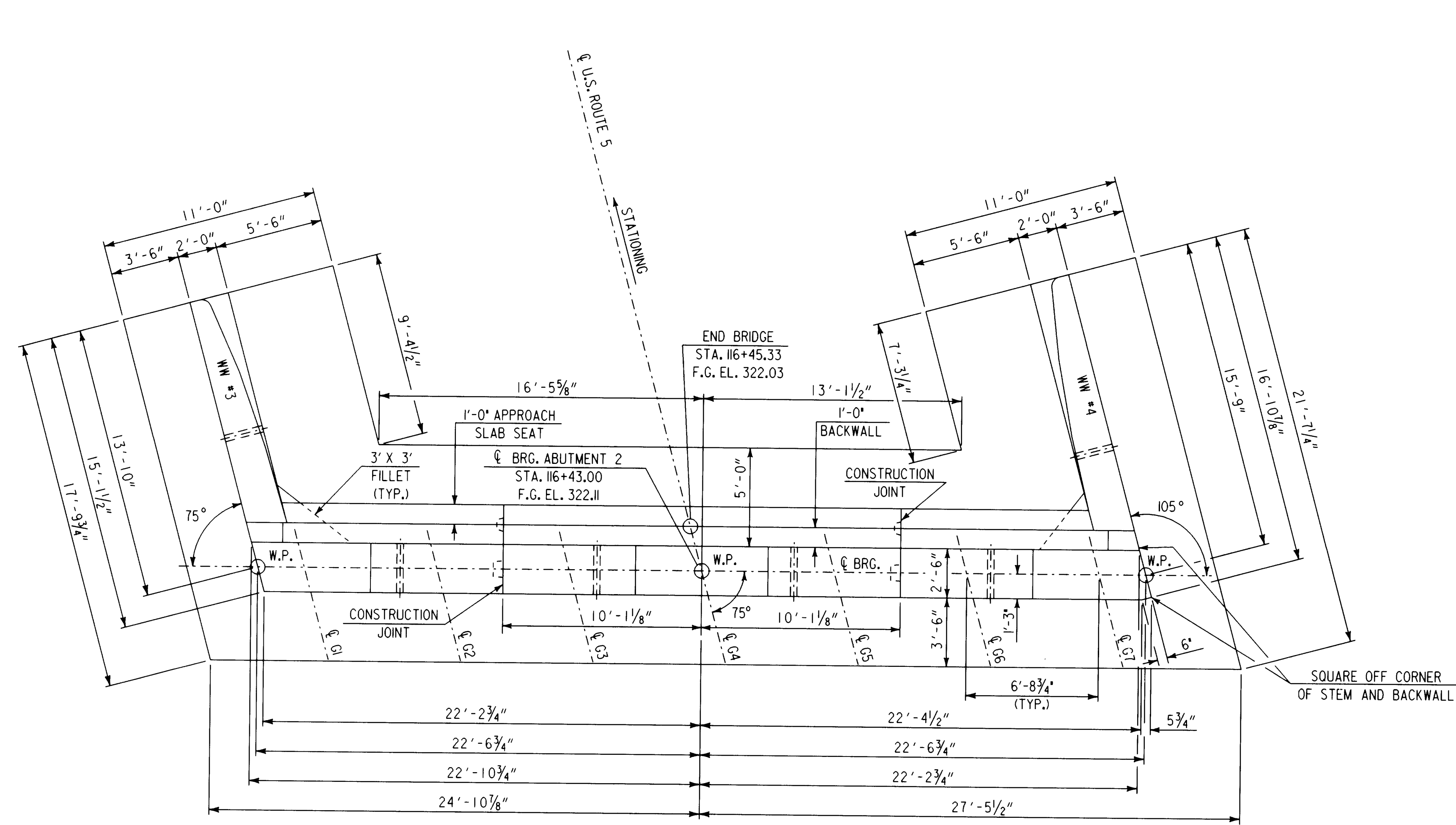
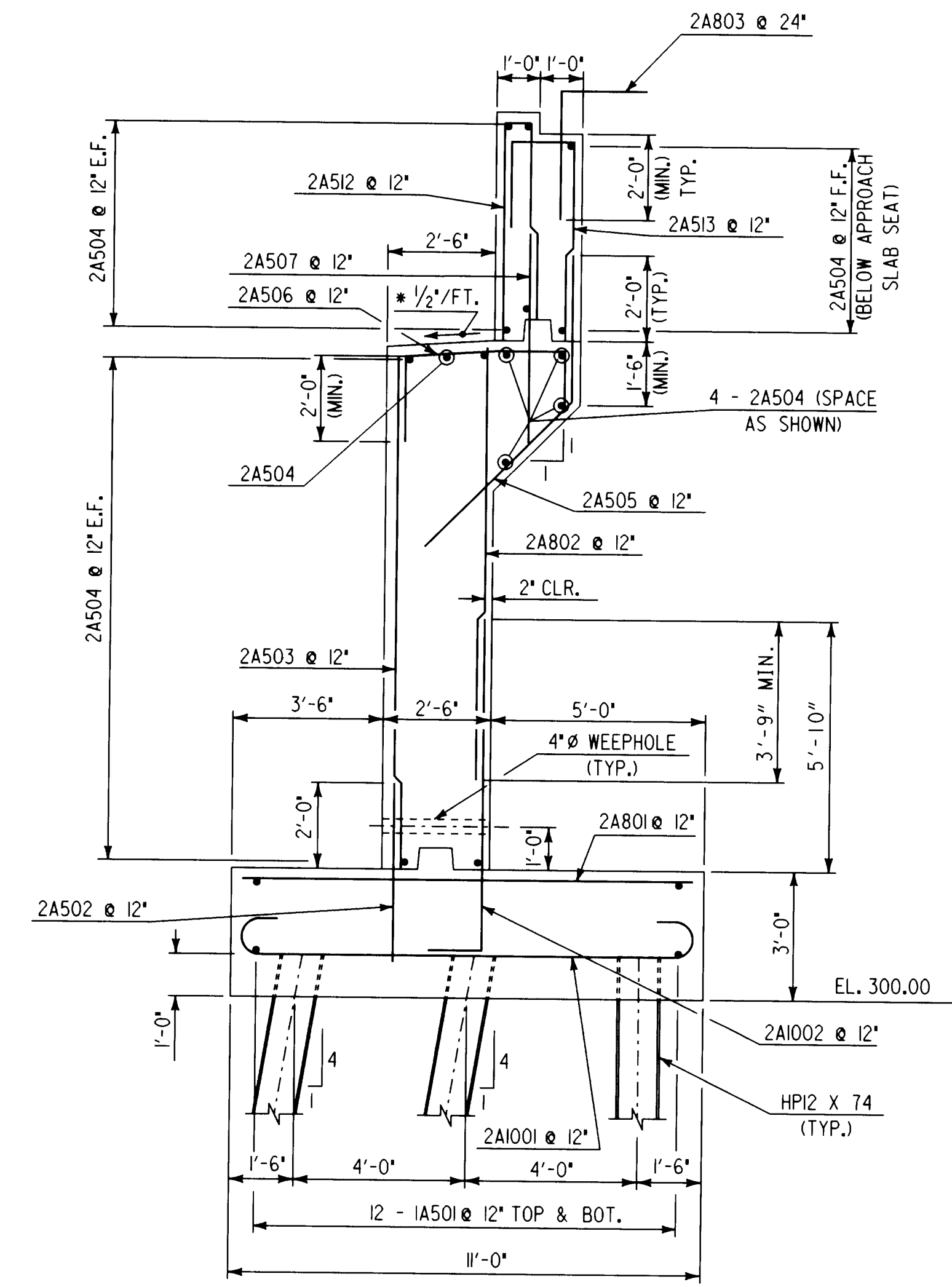


* SLOPE BRIDGE SEATS 1/2"/FT. BETWEEN BEARINGS.
AREAS UNDER BEARINGS AND AT FASCIA SHALL BE LEVEL.



ABUTMENT NO. 2 PLAN

SCALE: 1/4" = 1'-0"



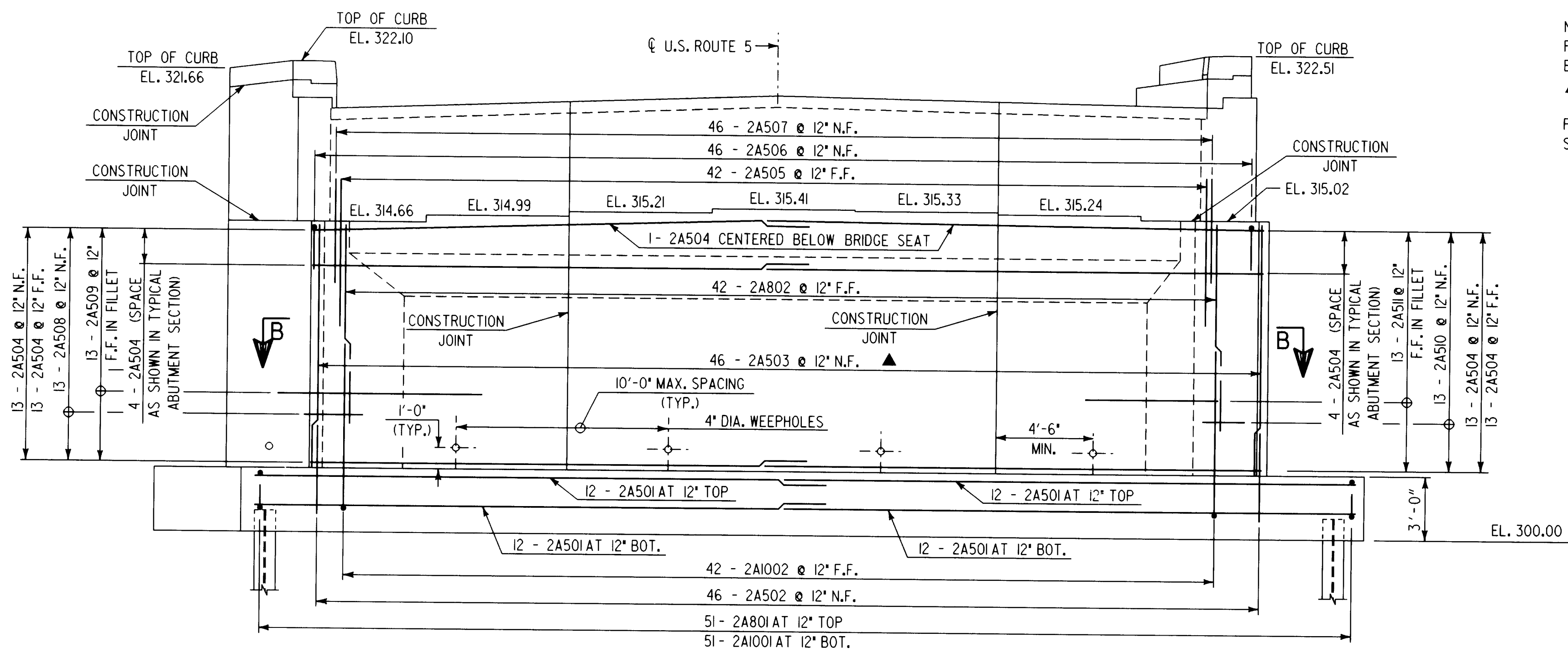
ABUTMENT NO. 2 TYPICAL SECTION

SCALE: 3/8" = 1'-0"

NOTE:
N.F. - NEAR FACE
F.F. - FAR FACE
E.F. - EACH FACE
▲ - CUT TO FIT IN FIELD

FOR FILLET SECTION B-B,
SEE SHT. BR124.

NOTE: REINFORCING COVER 3" CLEAR ON ALL
FACES EXCEPT WHERE NOTED.



ABUTMENT NO. 2 ELEVATION

SCALE: 1/4" = 1'-0"

**STATE OF VERMONT
AGENCY OF TRANSPORTATION**

Town Of	SPRINGFIELD	Bridge No.	44
Highway No.	U.S. ROUTE 5	Log Sta.	
		Surv. Sta.	
U.S. ROUTE 5 OVER BLACK RIVER			
ABUTMENT NO. 2 DETAILS			
Designed By	S. BAKI	Drawn By	W. GAYNOR
Checked By	Date	Bridge Design Supervisor	
S. BAKI	7/95	P. PIERCE	Date 5/96
PROJECT		PROJECT NO.	
SPRINGFIELD		BRS-RS 0113 (8)	
I.G.C. Info.	c:\usr\j9145622\struct\sprabut2.dgn		
Bridge Sheet No.	BR121	Sheet	50 of 90