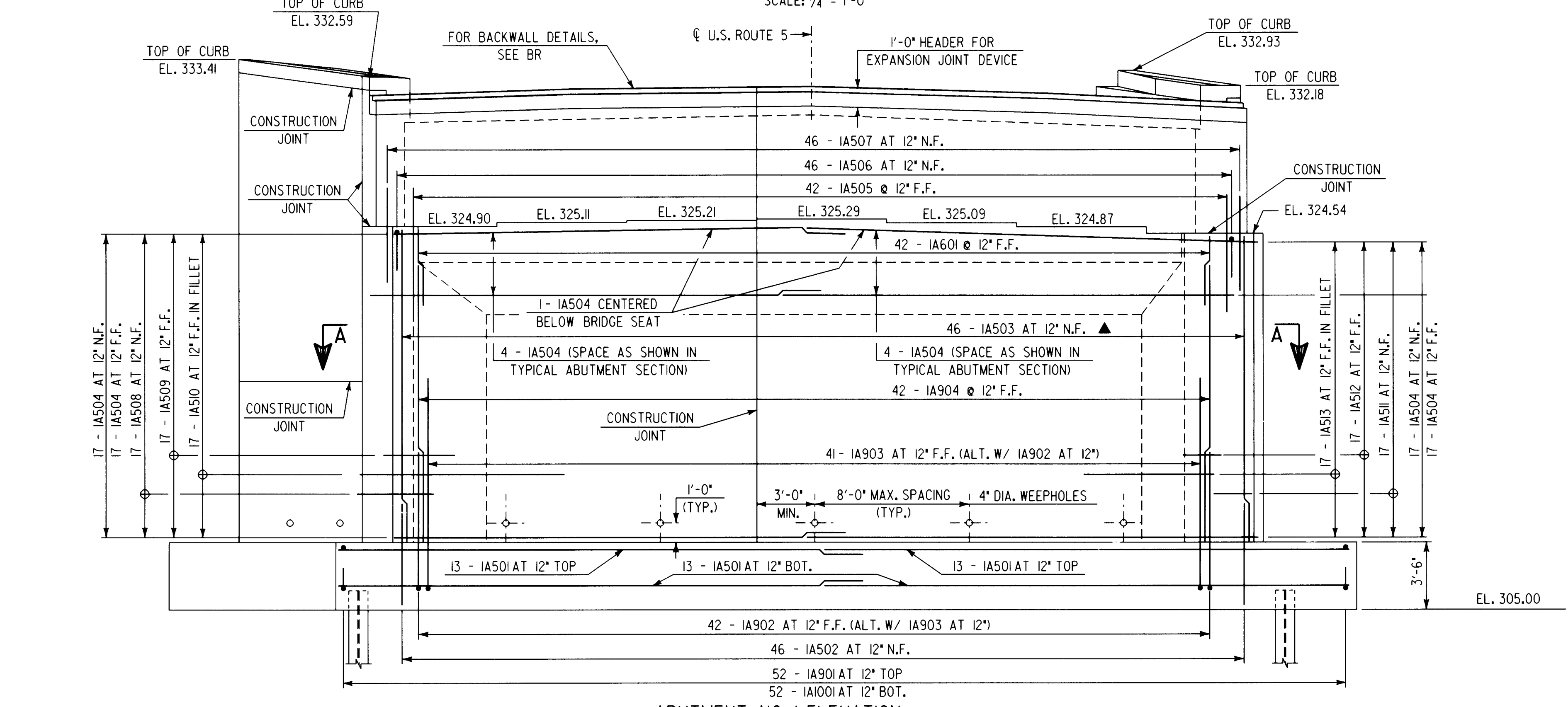
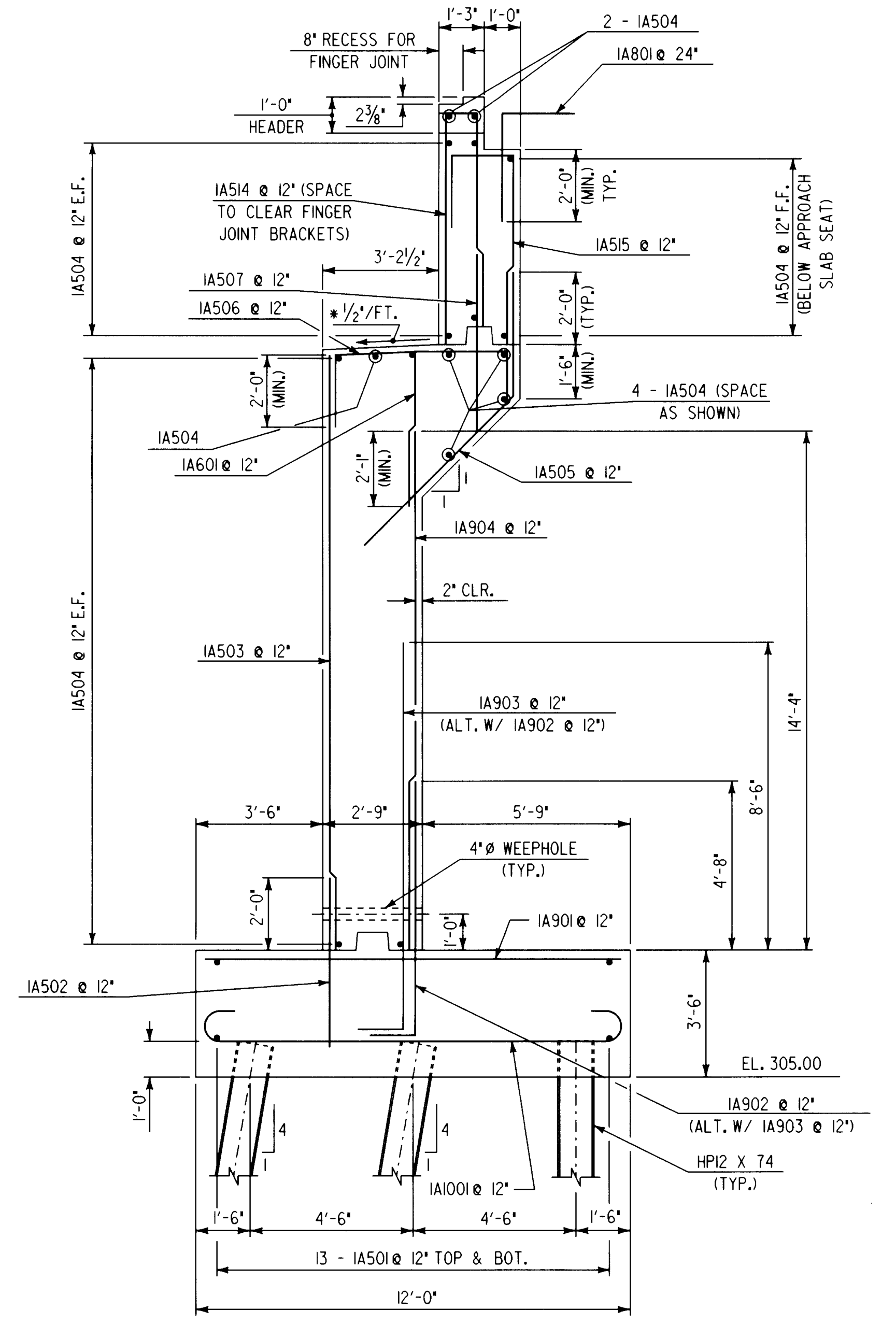


ABUTMENT NO. 1 PLAN  
SCALE: 1/4" = 1'-0"



ABUTMENT NO. 1 ELEVATION  
SCALE: 1/4" = 1'-0"

\* SLOPE BRIDGE SEATS 1/2" / FT. BETWEEN BEARINGS.  
AREAS UNDER BEARINGS AND AT FASCIA SHALL BE LEVEL.



ABUTMENT NO. 1 TYPICAL SECTION  
SCALE: 3/8" = 1'-0"

**NOTE:**  
N.F. - NEAR FACE  
F.F. - FAR FACE  
E.F. - EACH FACE  
▲ - CUT TO FIT IN FIELD  
FOR FILLET SECTION A-A,  
SEE SHT. BR124.

NOTE: REINFORCING COVER 3" CLEAR ON ALL  
FACES EXCEPT WHERE NOTED.

**STATE OF VERMONT  
AGENCY OF TRANSPORTATION**

Town Of	SPRINGFIELD	Bridge No.	44
Highway No.	U.S. ROUTE 5	Log Sta.	
		Surv. Sta.	
U.S. ROUTE 5 OVER BLACK RIVER			
ABUTMENT NO. 1 DETAILS			
Designed By	S. BAKI	Drawn By	W. GAYNOR
Checked By	S. BAKI	Date	6-95
		Bridge Design Supervisor	P. PIERCE
		Date	5/96
PROJECT	SPRINGFIELD	PROJECT NO.	BRS-RS 0113 (8)
I.G.C. Info.	c:\usr\j945622\sprabut1.dgn		
Bridge Sheet No.	BR120	Sheet	49 of 90