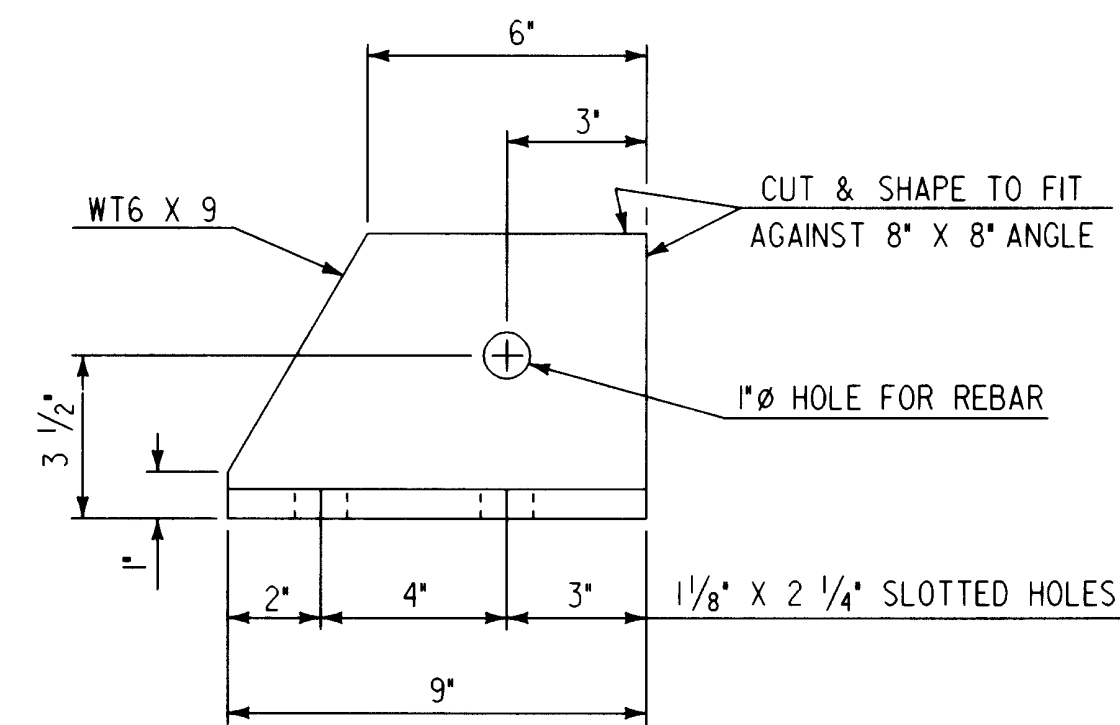


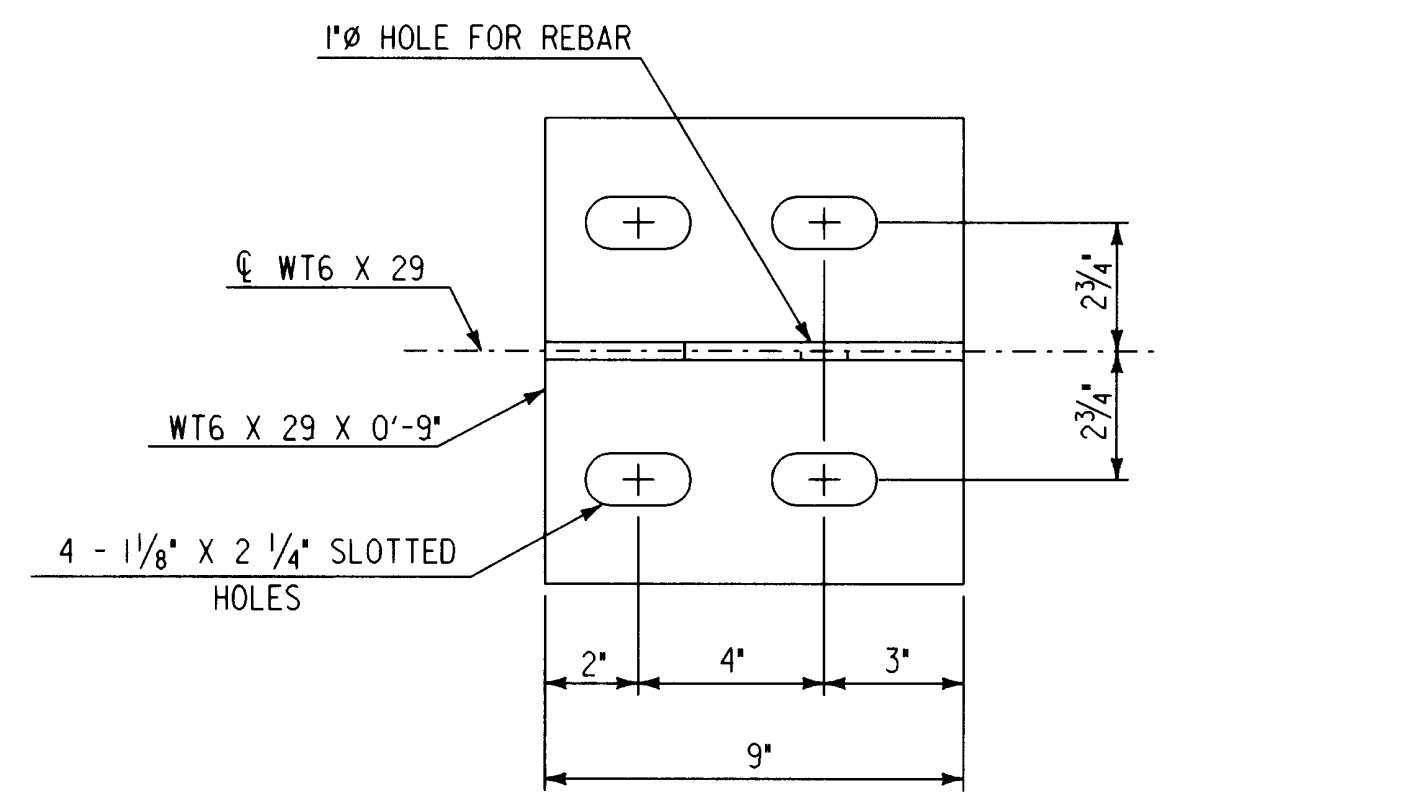
PLAN



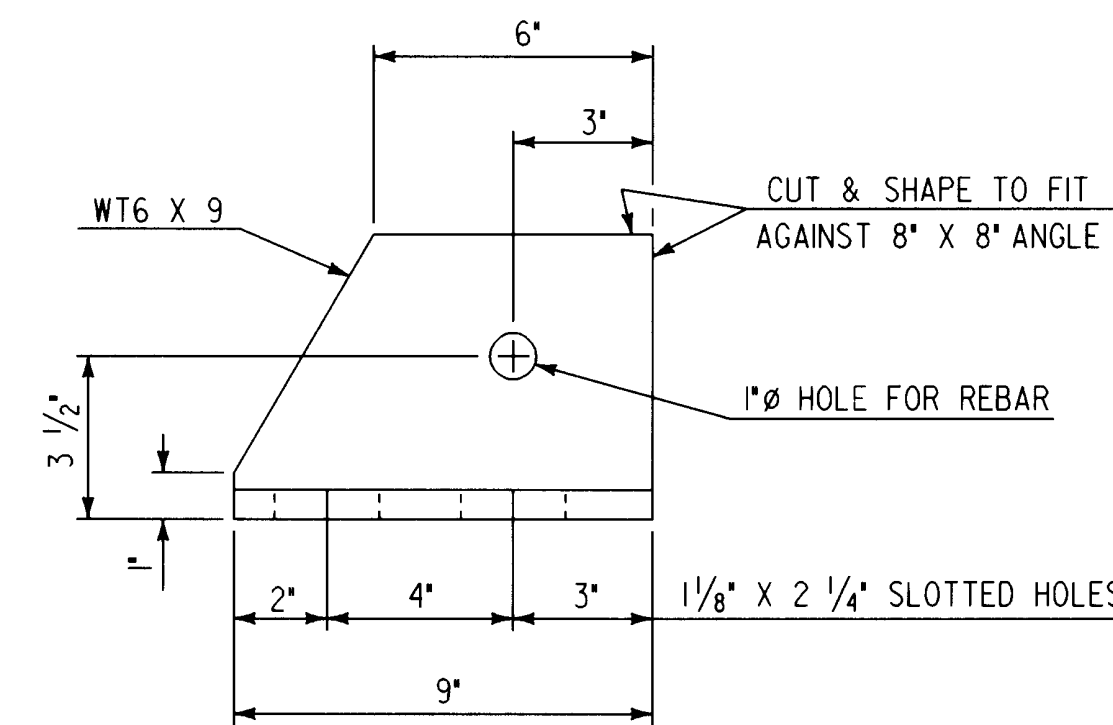
ELEVATION

BACKWALL SUPPORT ASSEMBLY BRACKET DETAIL

SCALE: 3" = 1'-0"



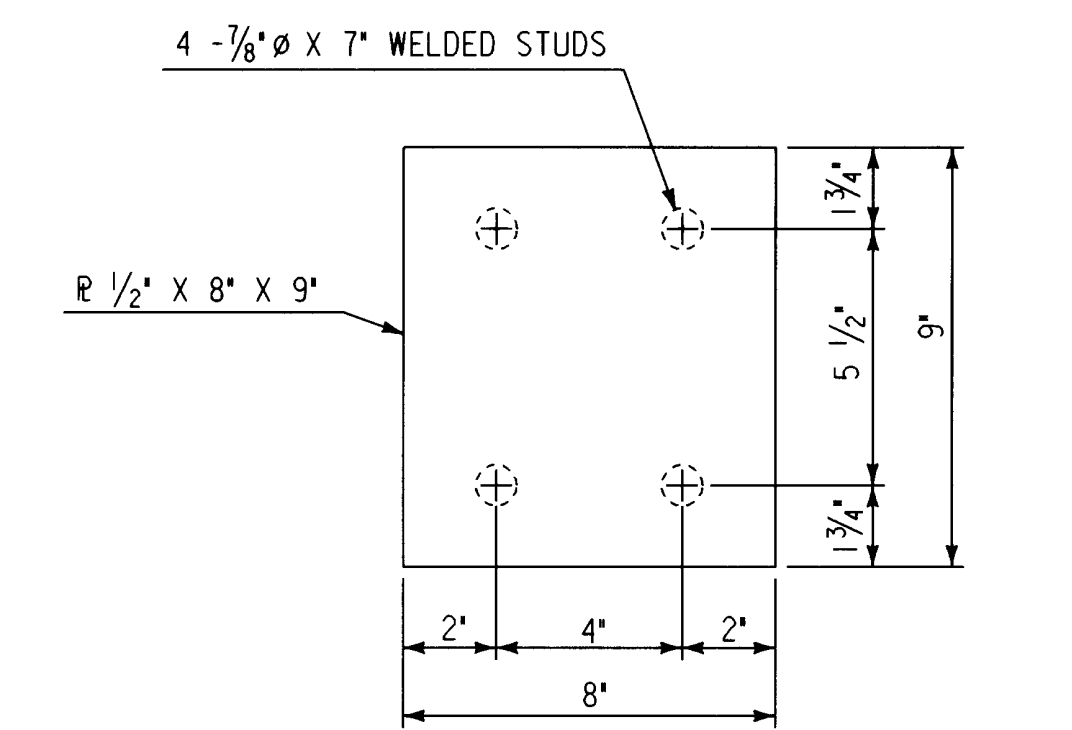
PLAN



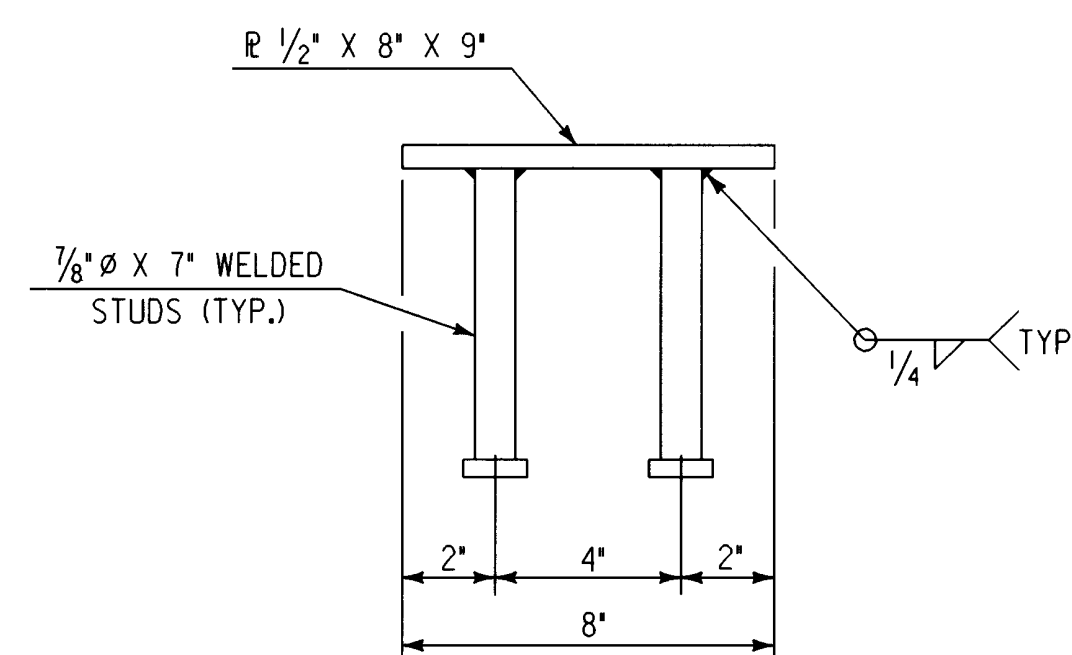
ELEVATION

GIRDER SUPPORT ASSEMBLY BRACKET DETAIL

SCALE: 3" = 1'-0"



PLAN



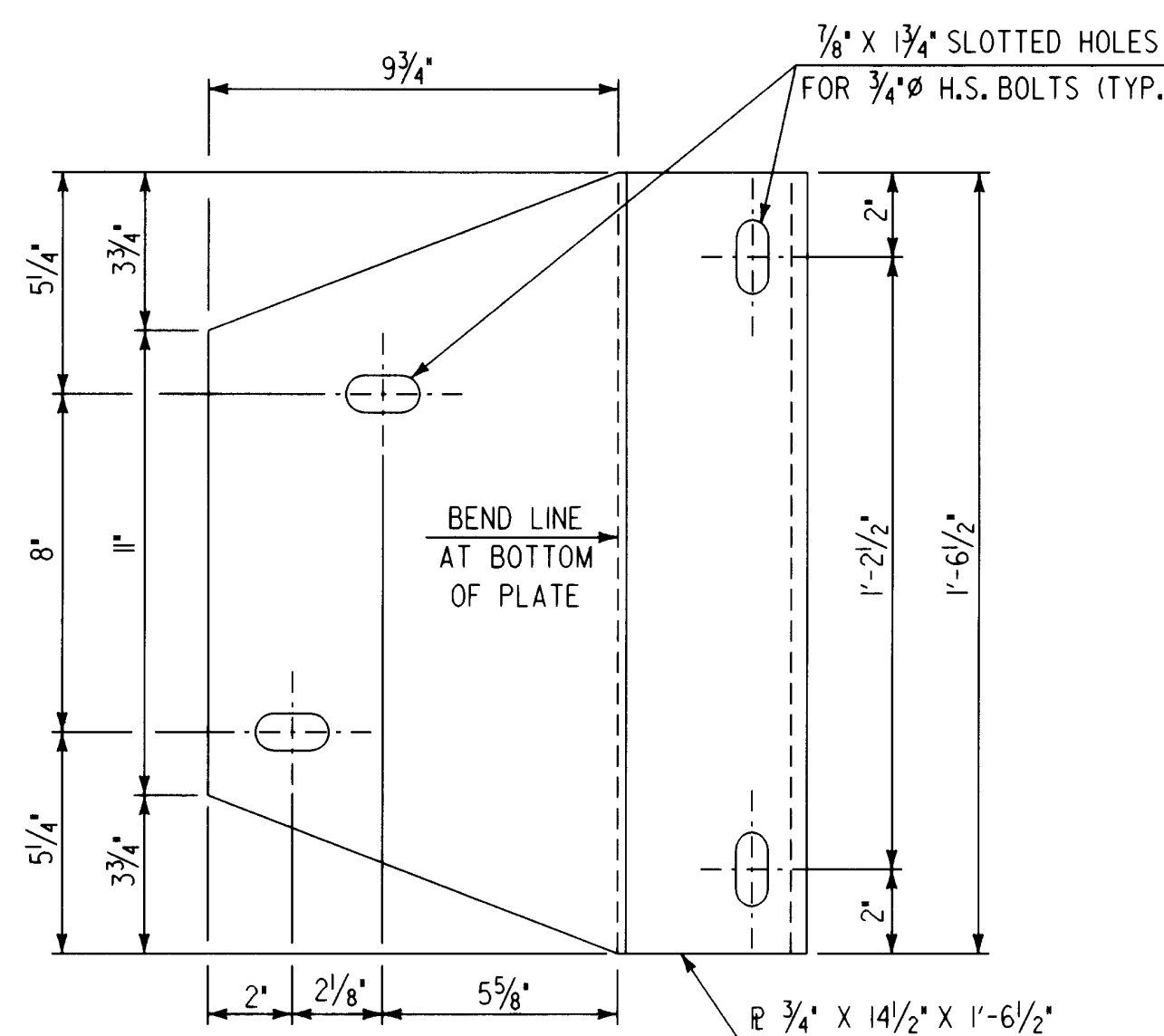
ELEVATION

BACKWALL SUPPORT ASSEMBLY PLATE DETAIL

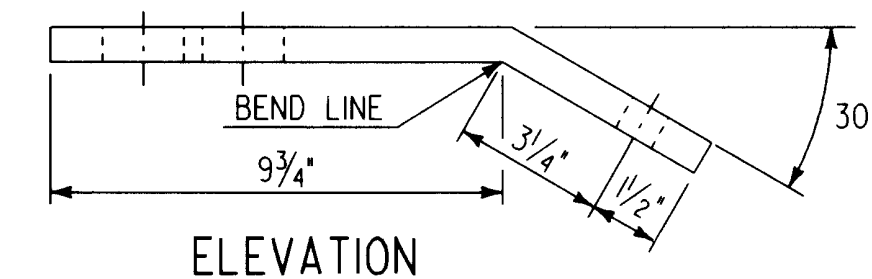
SCALE: 3" = 1'-0"

EXPANSION JOINT NOTES

1. THE FINAL FINISH OF THE EXPANSION JOINT SHALL BE COVERED DURING THE PLACING OF THE BRIDGE DECK CONCRETE.
2. ALL STEEL COMPONENTS SHALL BE AASHTO M270 GR50 GALVANIZED OR METALIZED AS PER SUBSECTION 506.15 (b) OR (c), UNLESS OTHERWISE NOTED. PAYMENT FOR THE FINGER PLATE ASSEMBLY, COMPLETE IN PLACE, SHALL BE UNDER ITEM 516.10, BRIDGE EXPANSION JOINT, TOTAL MOVEMENT 3 3/8".
3. THE ITEM "BRIDGE EXPANSION JOINT" SHALL INCLUDE THE FABRICATION AND ERECTION OF THE COMPLETE JOINT ASSEMBLY INCLUDING ALL STEEL PLATES, BRACKETS, ANGLES, WELDED STUDS OR RODS, PREFORMED FABRIC DRAIN TROUGH MATERIAL AND PLASTIC DRAIN TUBES, BUTYL RUBBER TAPE AND ANY OTHER MISCELLANEOUS MATERIAL NECESSARY TO INSTALL JOINT.
4. THE 2 1/4" THICK FINGER PLATES SHALL BE CUT FROM 2 1/4" x 30 1/8" PLATE, AND SEPARATED INTO FOUR SECTIONS (SEE BR16 FOR DETAILS). THE FABRIC TROUGH SHALL BE CONTINUOUS PREFORMED FABRIC MATERIAL CONFORMING TO SECTION 707.07.
5. PAYMENT FOR THE DOWNSPOUT ASSEMBLY SHALL BE INCLUDED IN THE UNIT PRICE BID, PER POUND, FOR STRUCTURAL STEEL.
6. WHERE INDICATED, EPOXY BONDING COMPOUND CONFORMING TO SECTION 719.02 SHALL BE APPLIED. PAYMENT TO BE INCLUDED IN UNIT PRICE FOR "CONCRETE, CLASS A", ITEM 501.22.
7. A 1" DIAMETER PLASTIC DRAIN TUBE SHALL BE INSTALLED AS SHOWN AT THE FACE OF CURB. THE UPPER END IS TO BE PLUGGED WITH STEEL WOOL AND THE LOWER END IS TO EXTEND BELOW THE BOTTOM OF THE ADJACENT GIRDER. THE DRAIN TUBES SHALL BE FASTENED TO THE GIRDERS USING A METHOD APPROVED BY THE ENGINEER.
8. FILL COUNTERBORED HOLES IN THE FINGER JOINTS WITH HOT POURED JOINT SEALER AFTER BOLT INSTALLATION. PAYMENT FOR THE WORK SHALL BE SUBSIDIARY TO ITEM 516.10.
9. PAYMENT FOR WATERSTOP SHALL BE SUBSIDIARY TO CONCRETE PAY ITEM.
10. FABRIC TROUGH SHALL BE THOROUGHLY CLEANED AND FLUSHED AFTER PAVING OPERATION.
11. THE EXPANSION JOINT SHALL BE SHOP ASSEMBLED AND SHIPPED AS ONE UNIT.



PLAN



ELEVATION

ABUTMENT DOWNSPOUT SUPPORT PLATE DETAIL

SCALE: 3" = 1'-0"

STATE OF VERMONT
AGENCY OF TRANSPORTATION

Town Of	SPRINGFIELD	Bridge No.	44
Highway No.	U.S. ROUTE 5	Log Sta.	
		Surv. Sta.	
U.S. ROUTE 5 OVER BLACK RIVER			
FINGER JOINT DETAILS AT ABUTMENT NO. 1			
Designed By	S. BAKI	Drawn By	
Checked By	Date	Bridge Design Supervisor	P. PIERCE Date 5/96
PROJECT	SPRINGFIELD	PROJECT NO.	BRS-RS 0113 (8)
I.G.C. Info.	c:\usr\j9145622\spr\joint.dgn		
Bridge Sheet No.	BR16	Sheet	47 of 90