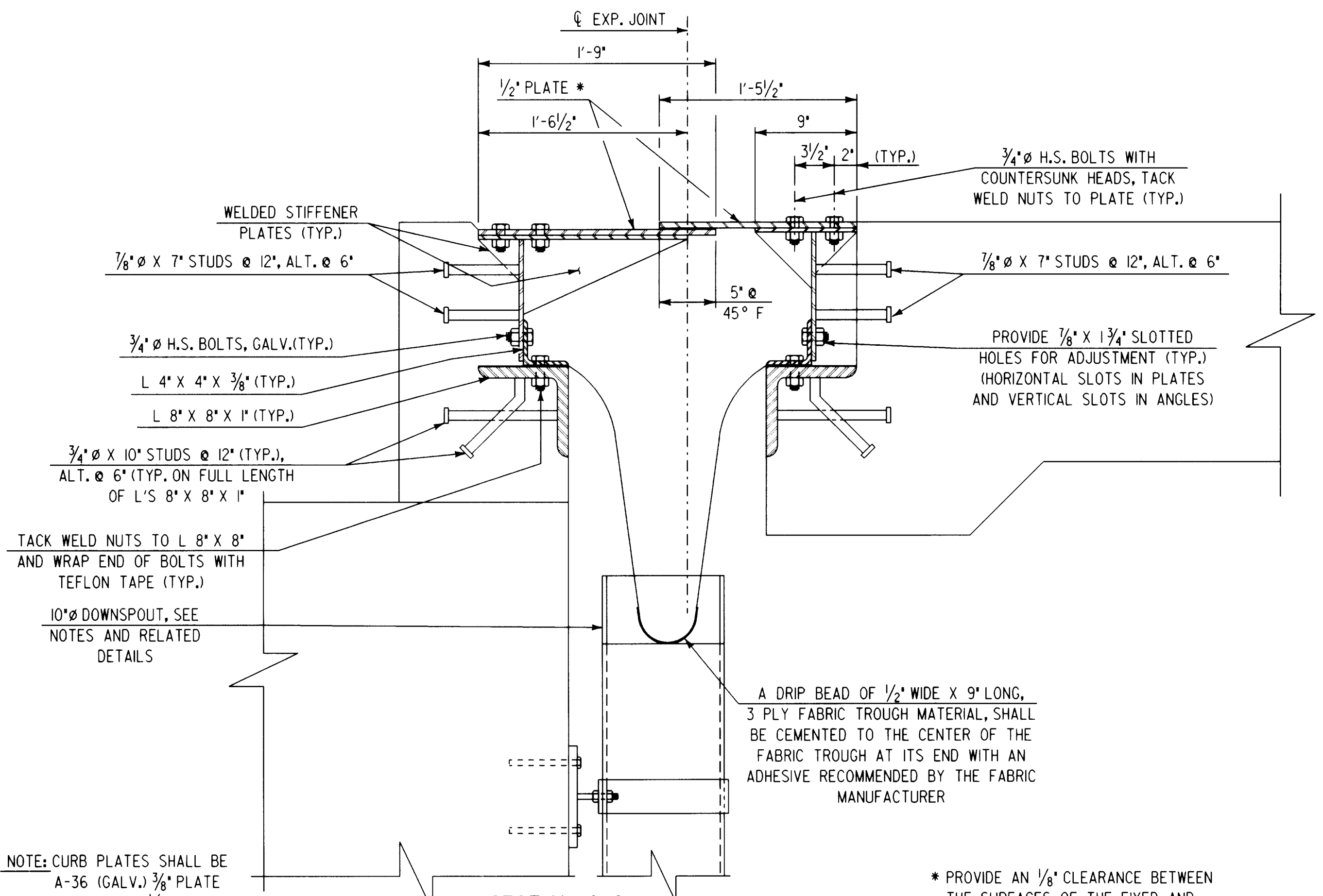
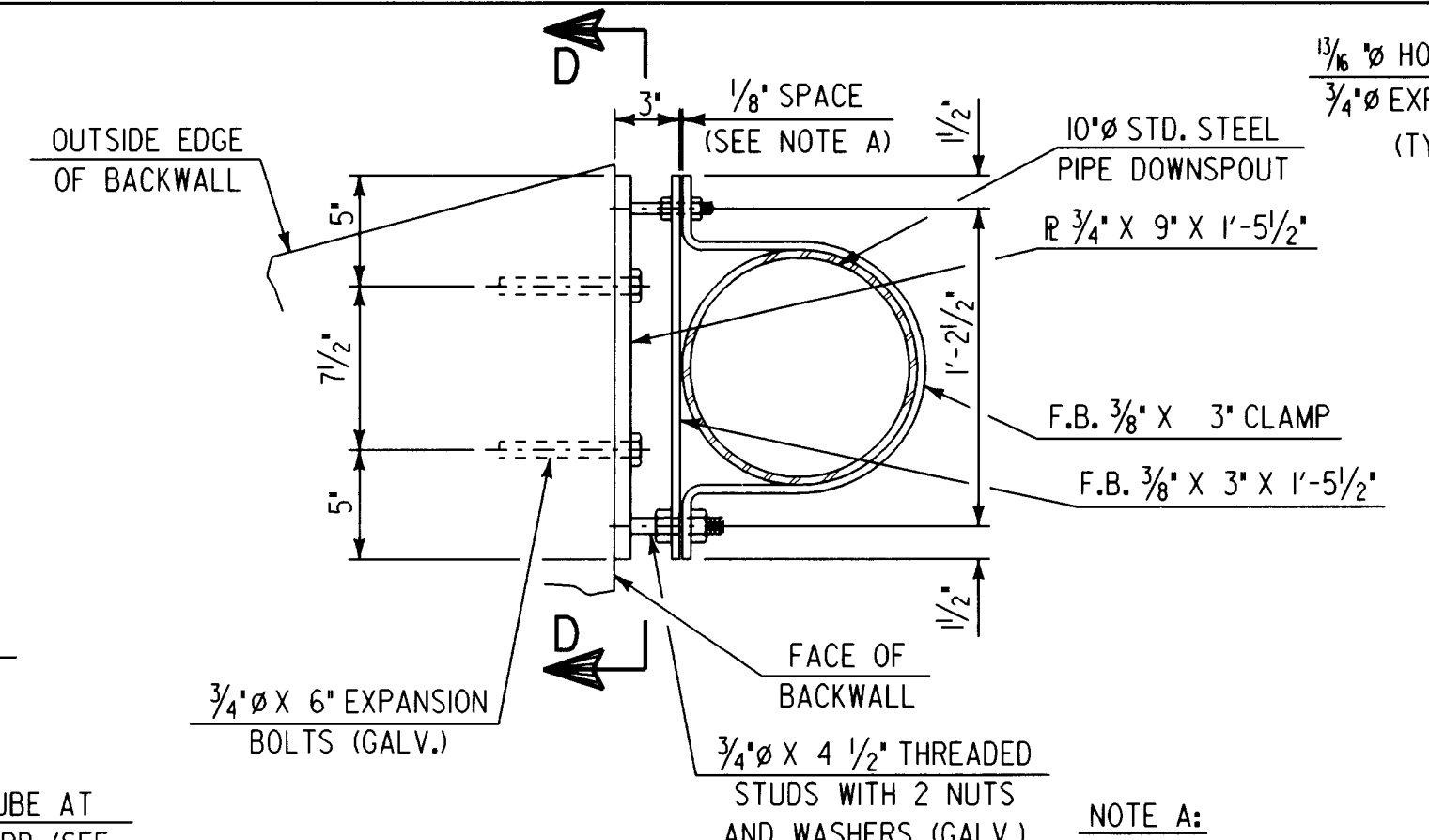


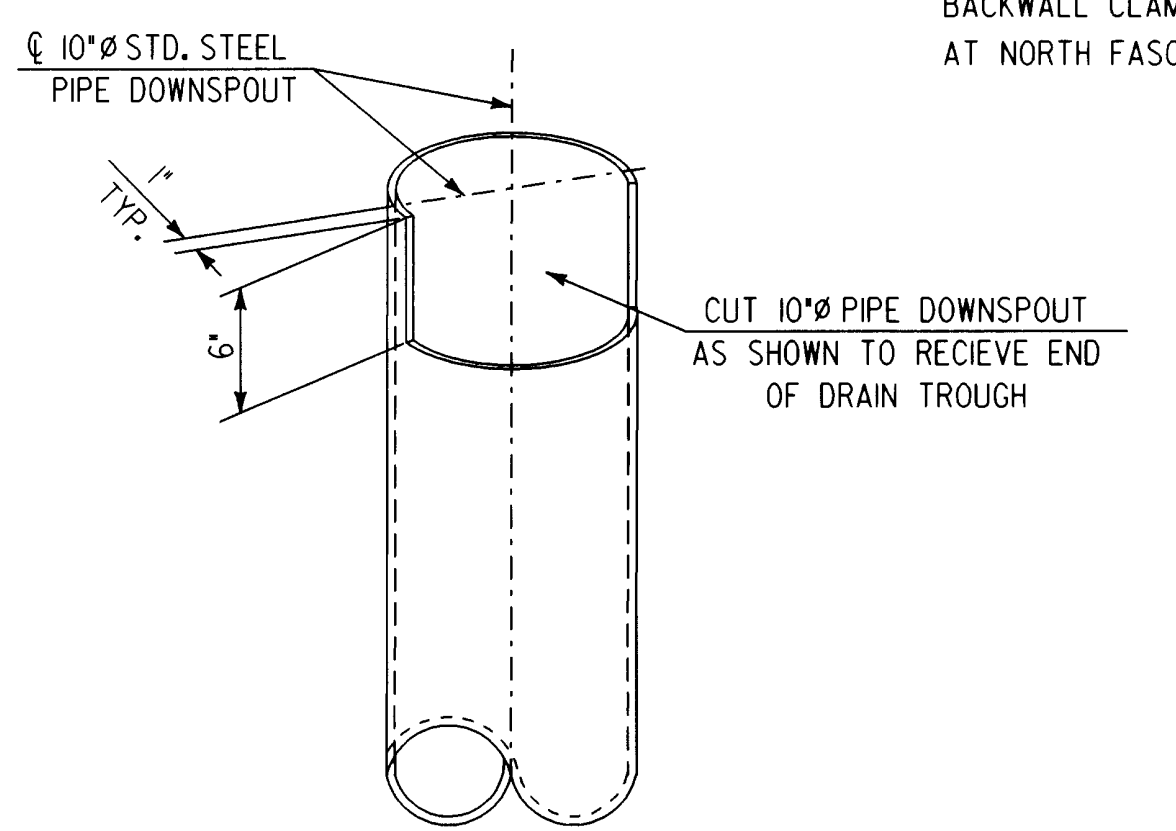
**SECTION B-B**  
SCALE: 1 1/2" = 1'-0"



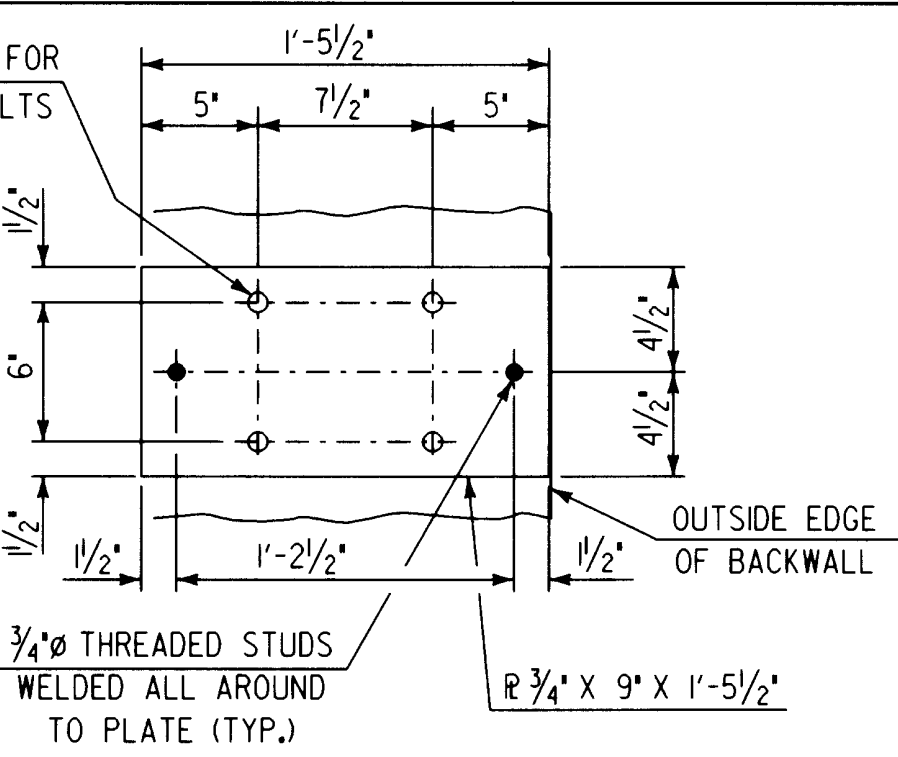
**SECTION C-C**  
SCALE: 1 1/2" = 1'-0"



**BACKWALL CLAMP DETAIL**  
SCALE: 1 1/2" = 1'-0"



**DOWNSPOUT CUTTING DETAIL**  
SCALE: 1 1/2" = 1'-0"

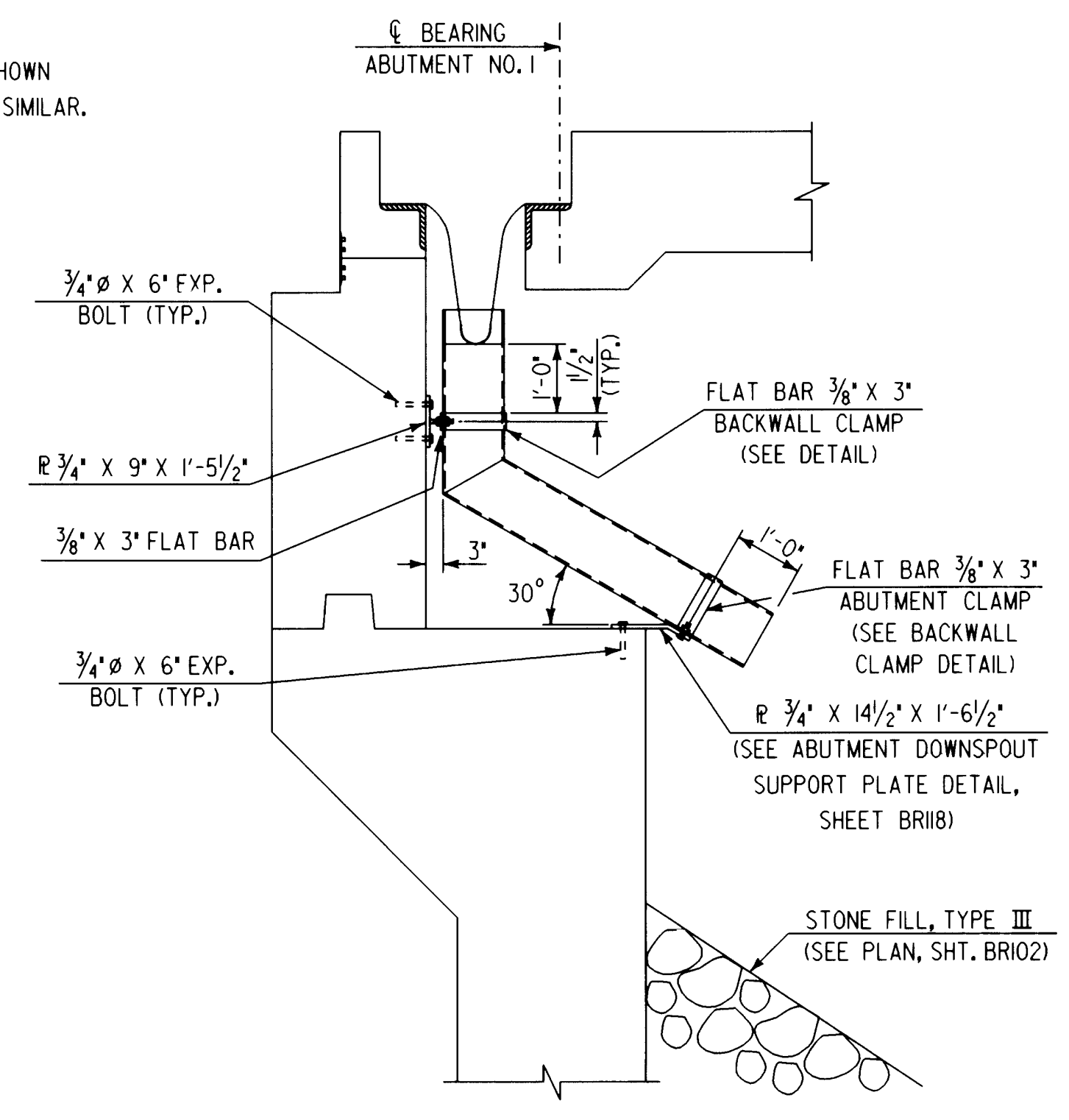


**SECTION D-D**  
SCALE: 1 1/2" = 1'-0"

**NOTE A:**  
TIGHTEN BOLTS UNTIL 1/8" SPACE CLOSSES TO ACHIEVE CLAMPING.

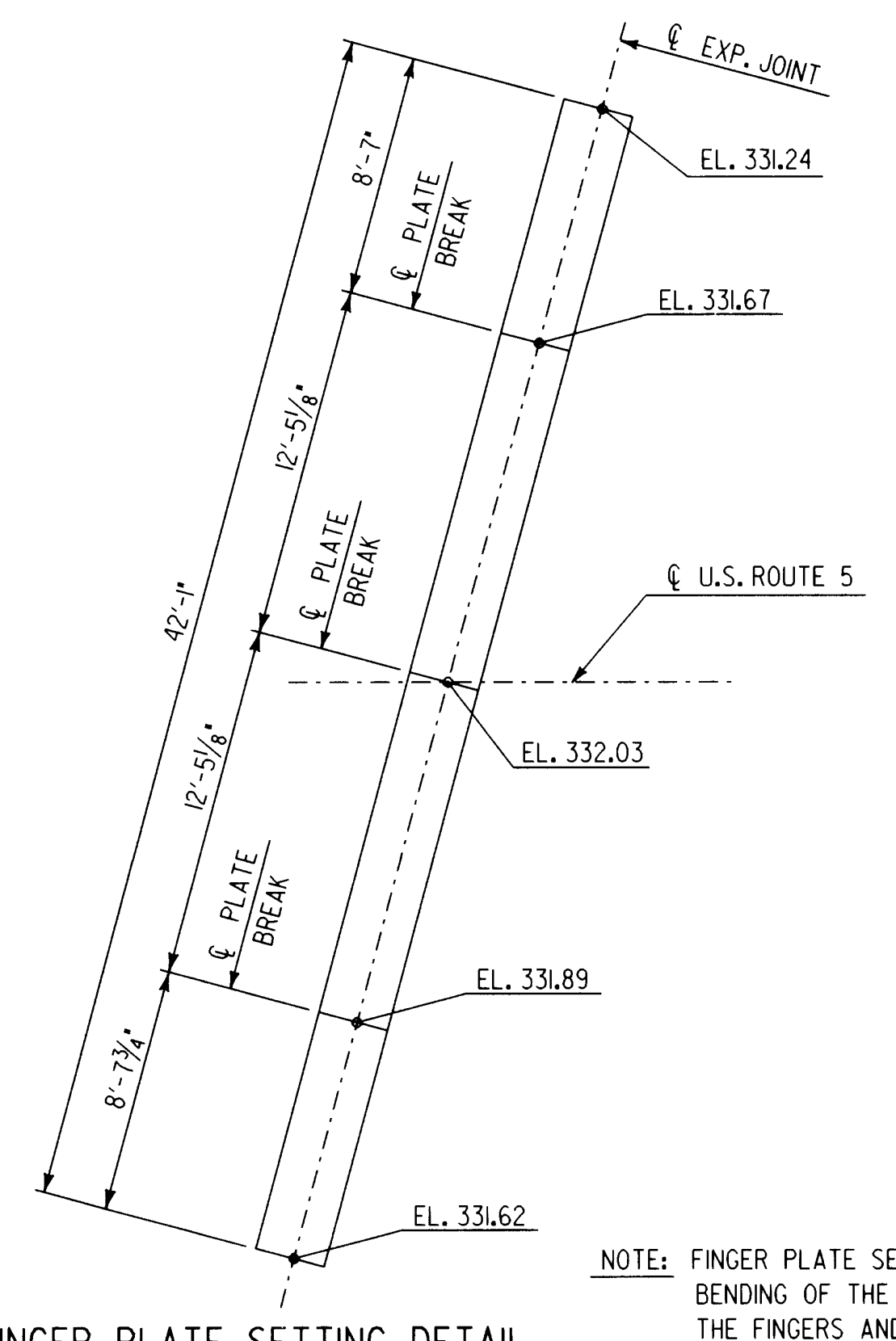
**NOTE:**  
BACKWALL CLAMP DETAILS ARE SHOWN AT NORTH FASCIA, SOUTH FASCIA SIMILAR.

- DOWNSPOUT NOTES**
1. STRUCTURAL PIPE SHALL CONFORM TO ASTM A500 OR 501 GALVANIZED IN ACCORDANCE WITH ASTM A-123.
  2. FLAT BAR CLAMPS AND PLATES SHALL BE GALVANIZED OR METALLIZED AS PER SECTION 506.15.
  3. DOWNSPOUT AND ACCESSORIES TO BE PAID FOR AS STRUCTURAL STEEL.

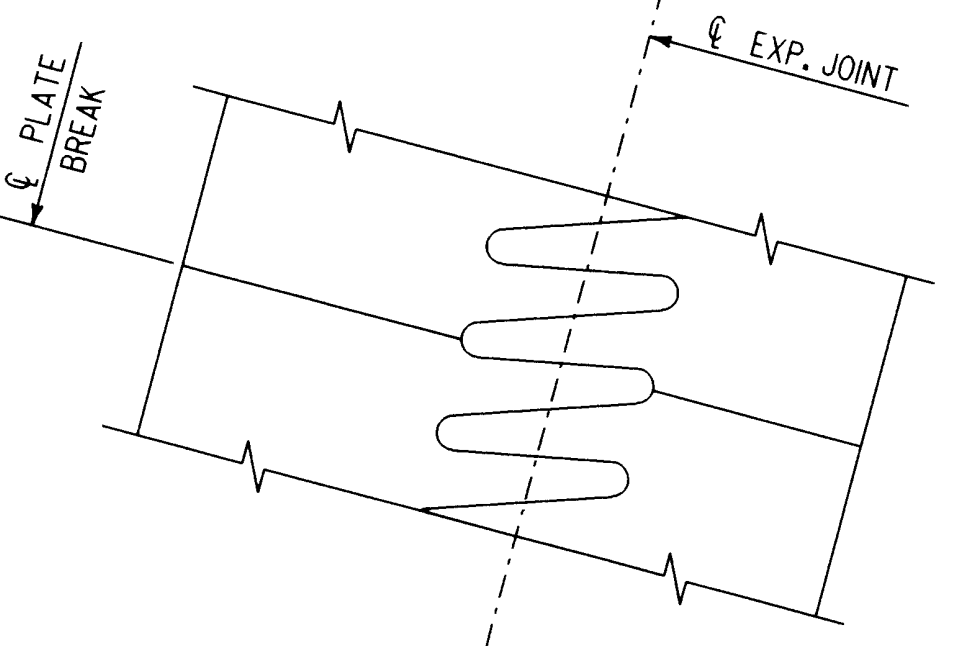


**SECTION AT DOWNSPOUT ASSEMBLY**  
SCALE: 1/2" = 1'-0"

- NOTES:**
1. FOR EXPANSION JOINT PLAN AND RELATED DETAILS, SEE SHT. BR116.
  2. FOR SUPPORT ASSEMBLY DETAILS AND EXPANSION JOINT NOTES, SEE SHT. BR118.



**FINGER PLATE SETTING DETAIL**  
SCALE: 3/16" = 1'-0"



**FINGER PLATE SECTION BREAK DETAIL**  
SCALE: 1/2" = 1'-0"

**NOTE:** FINGER PLATE SETTING DETAIL IS INTENDED TO SHOW THE BENDING OF THE FINGER PLATE PRIOR TO FINAL CUTTING OF THE FINGERS AND THE END SKEWS (SEE CUTTING DETAIL ON SHT. BR116). ELEVATIONS SHOWN ARE ROADWAY ELEVATIONS AT TOP OF FINGER PLATE.

**STATE OF VERMONT  
AGENCY OF TRANSPORTATION**

Town Of	SPRINGFIELD	Bridge No.	44
Highway No.	U.S. ROUTE 5	Log Sta.	
		Surv. Sta.	
U.S. ROUTE 5 OVER BLACK RIVER			
FINGER JOINT DETAILS AT ABUTMENT NO. 1			
Designed By	S. BAKI	Drawn By	W. GAYNOR
Checked By	S. BAKI	Date	7/95
			Bridge Design Supervisor
			P. PIERCE Date 5/96
PROJECT	SPRINGFIELD	PROJECT NO.	BRS-R5 0113 (8)
LG.C. Info.	c:\usr\j945622\spr\joint.dgn		
Bridge Sheet No.	BR117	Sheet	46 of 90