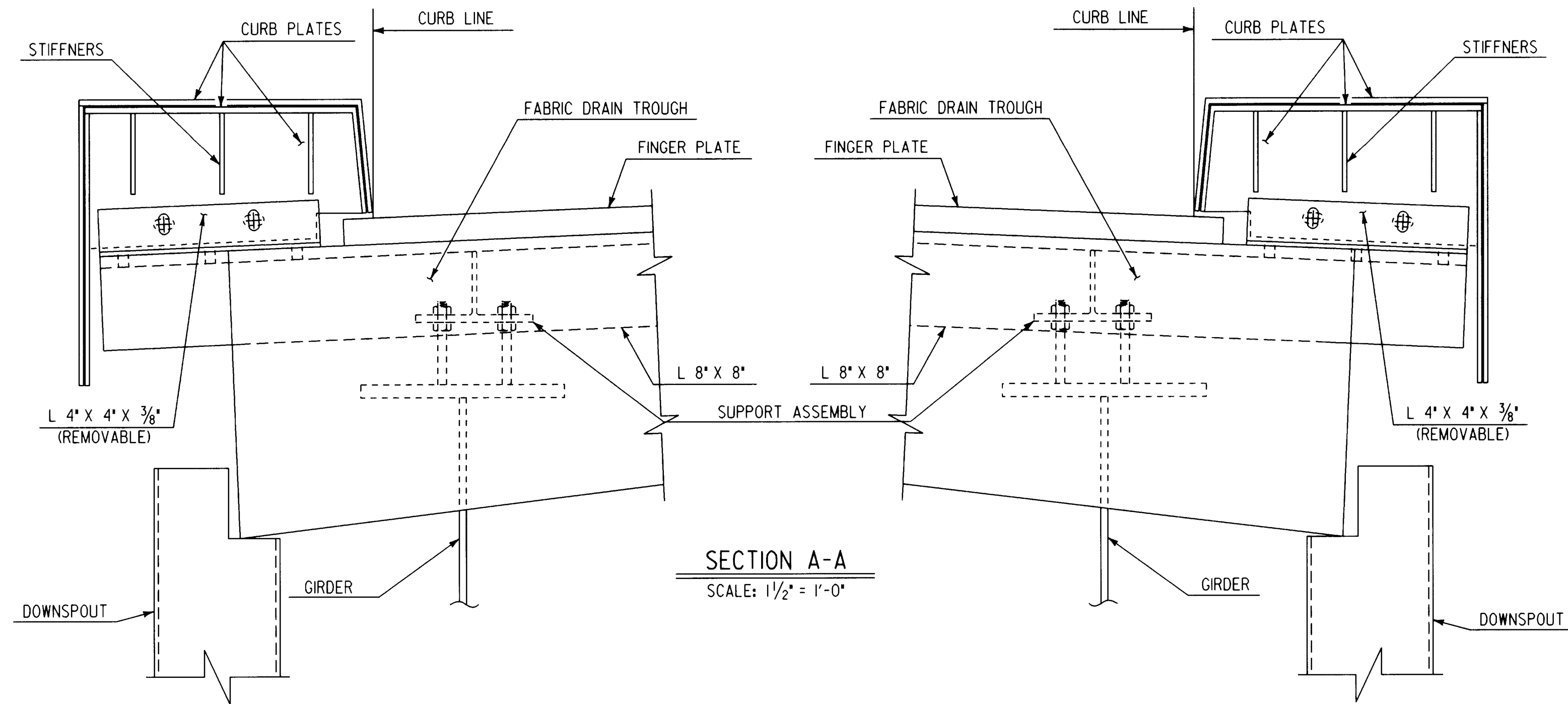
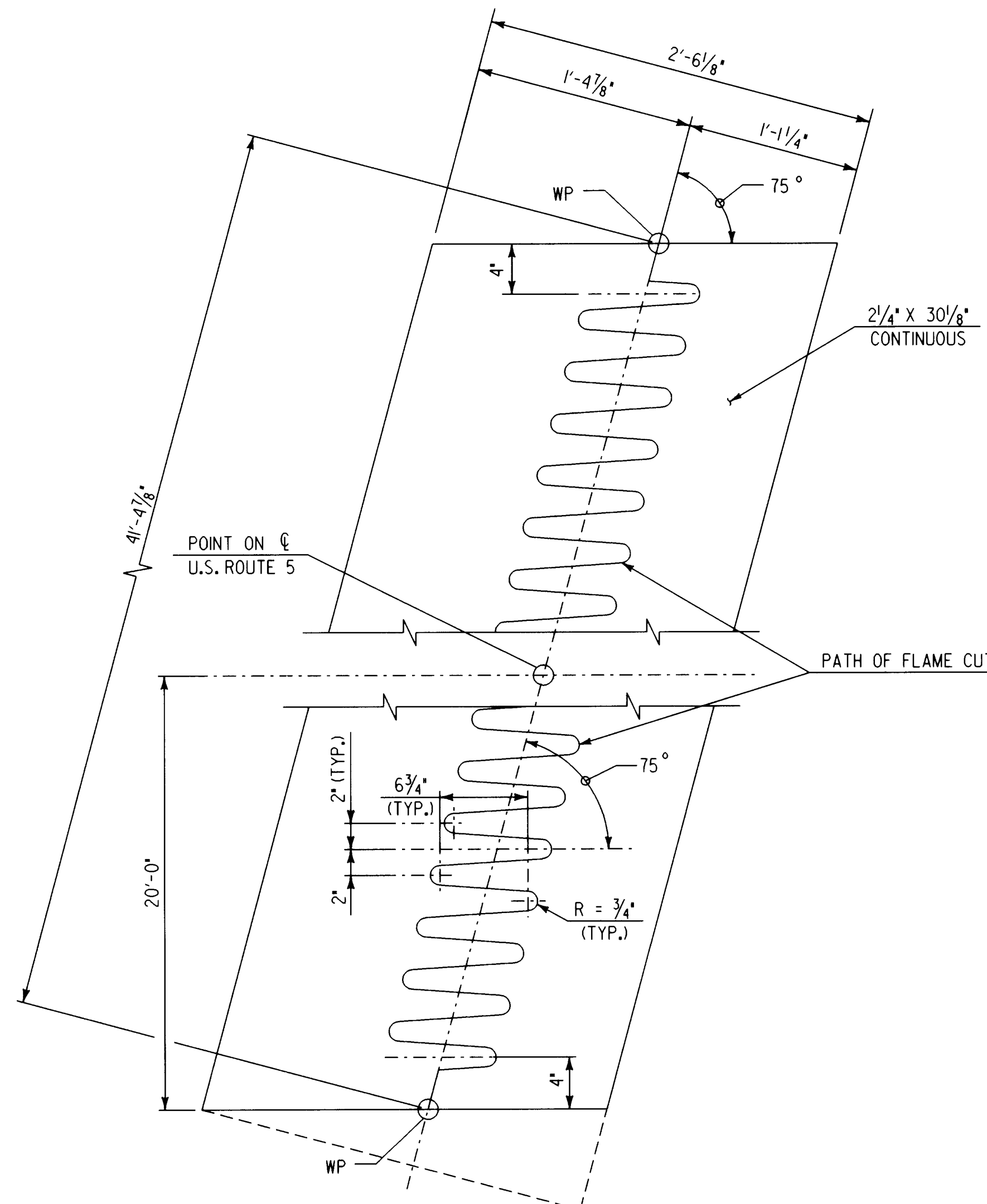
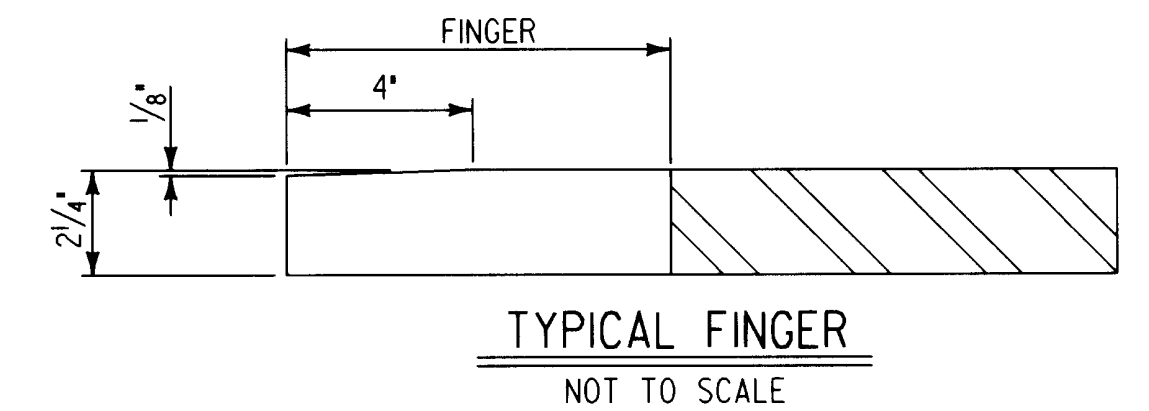


PLAN OF EXPANSION JOINT
SCALE: 1" = 1'-0"

NOTE: SEE SHT. BRI17 FOR FINGER PLATE SETTING DETAIL.



SECTION A-A
SCALE: 1 1/2" = 1'-0"



FINGER PLATE CUTTING DETAIL
SCALE: 1 1/2" = 1'-0"

JOINT DIMENSION TABLE	
TEMP (DEG F)	DIMENSION A
0	1 1/8"
15	3/4"
30	3/8"
45	0"
60	-3/8"
75	-3/4"
90	-1 1/8"
105	-1 1/2"

NOTES:

- FOR SECTION B-B AND C-C, DOWNSPOUT DETAILS AND FINGER PLATE SETTING DETAIL, SEE SHT. BRI17.
- FOR SUPPORT ASSEMBLY DETAILS AND EXPANSION JOINT NOTES, SEE SHT. BRI18.

**STATE OF VERMONT
AGENCY OF TRANSPORTATION**

Town Of	SPRINGFIELD	Bridge No.	44
Highway No.	U.S. ROUTE 5	Log Sta.	
		Surv. Sta.	
U.S. ROUTE 5 OVER BLACK RIVER			
FINGER JOINT DETAILS AT ABUTMENT NO. 1			
Designed By	S. BAKI	Drawn By	W. GAYNOR
Checked By	S. BAKI	Date	7/95
		Bridge Design Supervisor	P. PIERCE
		Date	5/96
PROJECT	SPRINGFIELD	PROJECT NO.	BRS-RS 0113 (8)
I.G.C. Info.	c:\user\j9145622\spr\joint.dgn		
Bridge Sheet No.	BRI16	Sheet	45 of 90