

U.S. ROUTE 5  
CURVE DATA  
CURVE 1  
Δ = 5°57'20.1" RT  
D = 2400.00.00'  
R = 2864.79'  
T = 149.02'  
L = 297.78'  
E = 5.81'  
e = 0.021 FT/FT

STA 105+50  
BEGIN PROJECT BRG  
END APPROACH CONS

TEMPORARY SNOW FENCE (TYP.)  
SEE TABLE FOR LOCATIONS

STA 104+60 LT TO STA 105+00 LT  
15' x 50' CPEP (SL) WITH END  
SECTION AT INLET AND OUTLET

STA 104+72 LT TO STA 104+98 LT  
REMOVE 26' x 18' ACCOMP

STA 104+00 LT TO STA 105+50 LT  
CONSTRUCT SPECIAL DITCH

BM 'B'  
CHISELED SQUARE  
TOP LEDGE OUTCROP  
ELEV. 369.88 = 365.99 AB

2.5' AB  
STA 103+50  
BEGIN APPROACH CONSTRUCTION  
MATCH EXISTING PAVEMENT

50' TAPER

APPROX. LOCATION OF  
S. BROWN  
STRUCTURE

STA 104+50 RT TO STA 105+50 RT  
CONSTRUCT SPECIAL DITCH

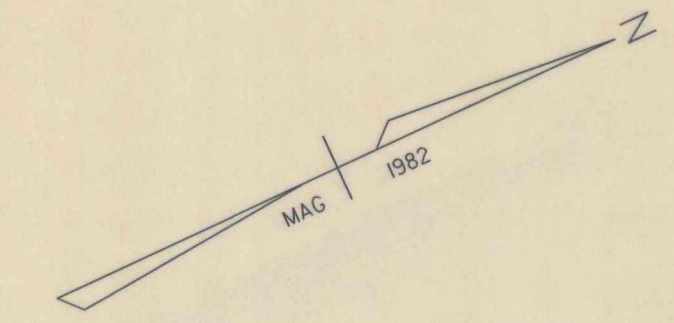
ELIMINATE ACCESS HERE

STA 104+60 RT TO STA 105+20 RT  
REMOVE 60' x 12' ACCOMP  
APPROXIMATE EXISTING R.O.W.

STA 104+90 RT TO STA 105+35 RT  
8' x 45' CPEP (SL) WITH 8' END  
SECTION AT INLET AND OUTLET

STA 104+00 RT TO STA 10+50 RT  
LINE DITCH WITH STONE FILL, TYPE T  
8'W x 1'D

*Old 6" Underdrain  
Connects to new 6"  
Underdrain at Sta. 105+25 RT  
Location of existing Flushing Basin  
not found.*

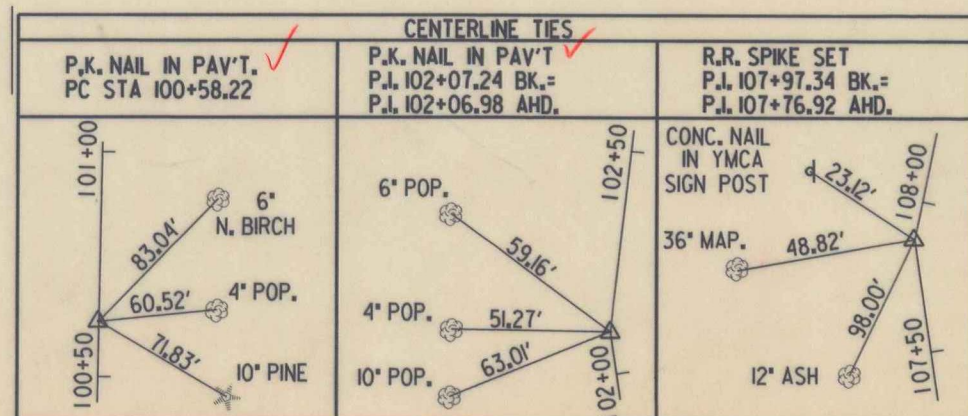


Steel Marker Posts

Station	Pos.	No.
105+50	LT	1
105+90	LT	1
106+60	RT	1
107+10	RT	1
107+50	RT	1
108+50	RT	1
110+50	RT	1
110+75	RT	1
111+35	LT	1
111+75	LT	1

DRIVEWAY LOCATI

U.S. ROUTE 5 STA
U.S. ROUTE 5 STA
U.S. ROUTE 5 STA
U.S. ROUTE 5 STA



STATION OFFSET

105+00	120' LT
105+00	60' LT
106+50	55' LT
108+17	52' LT
108+00	205' LT

DATUM  
VERTICAL NGVD 1929  
HORIZONTAL N/A