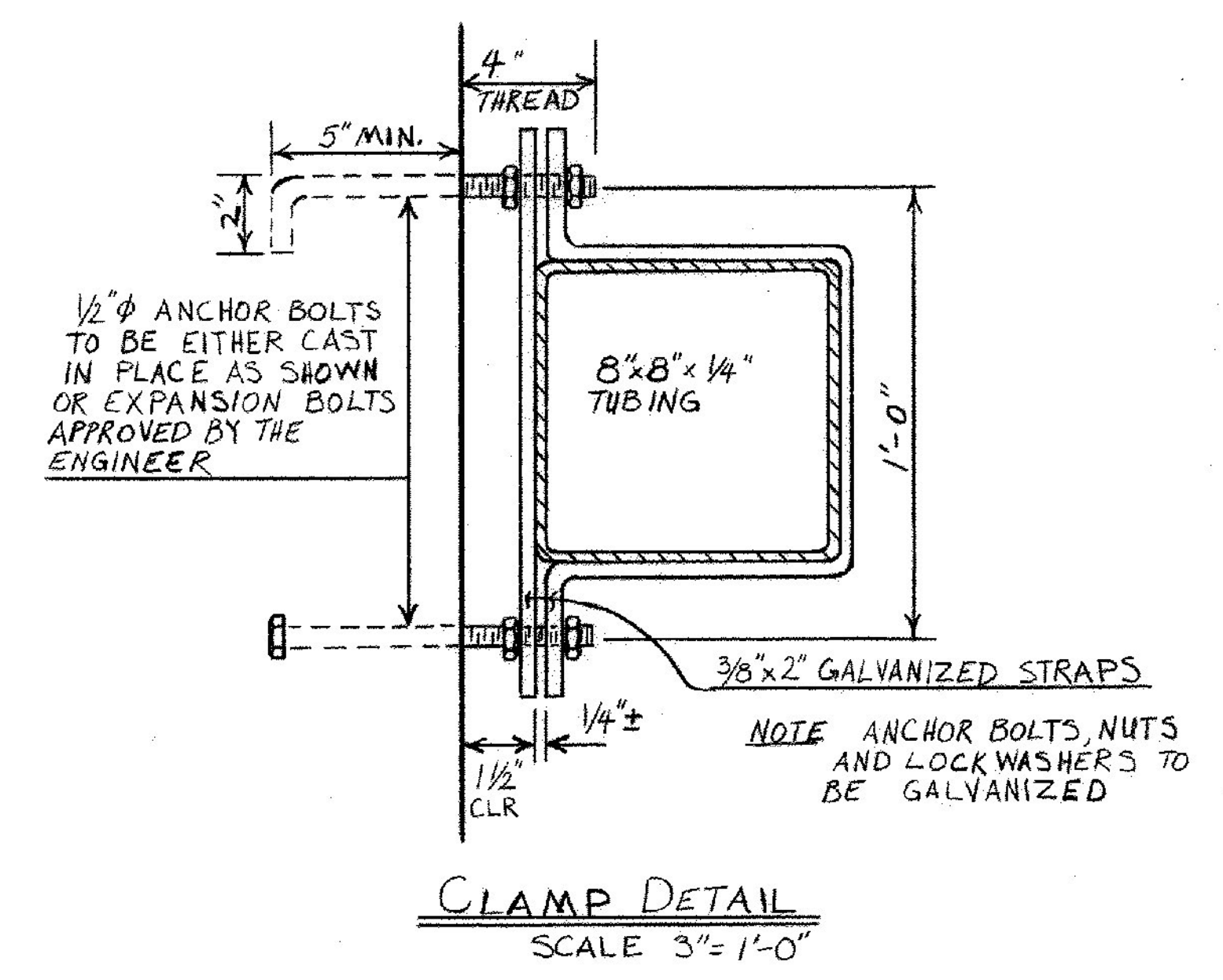
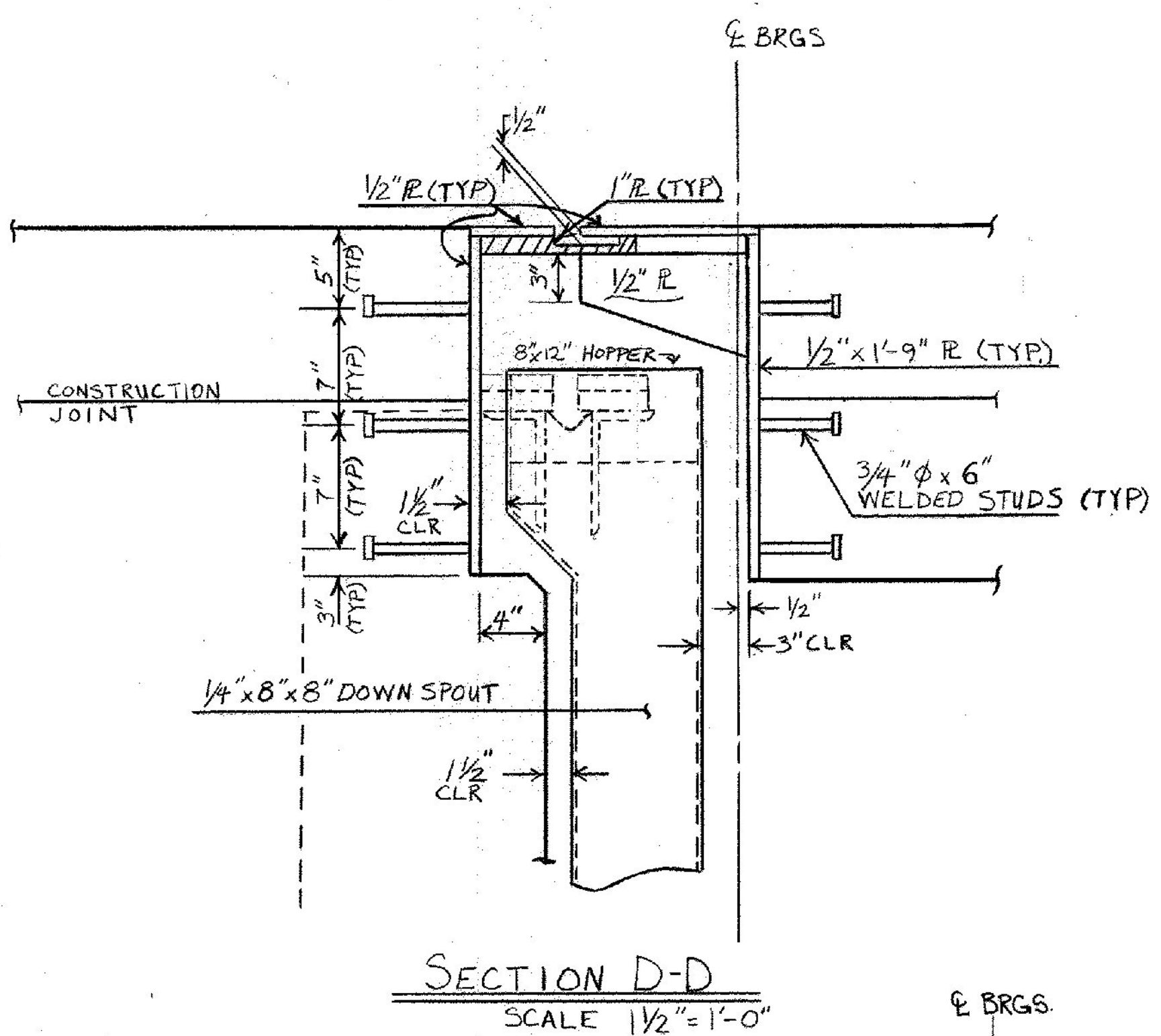
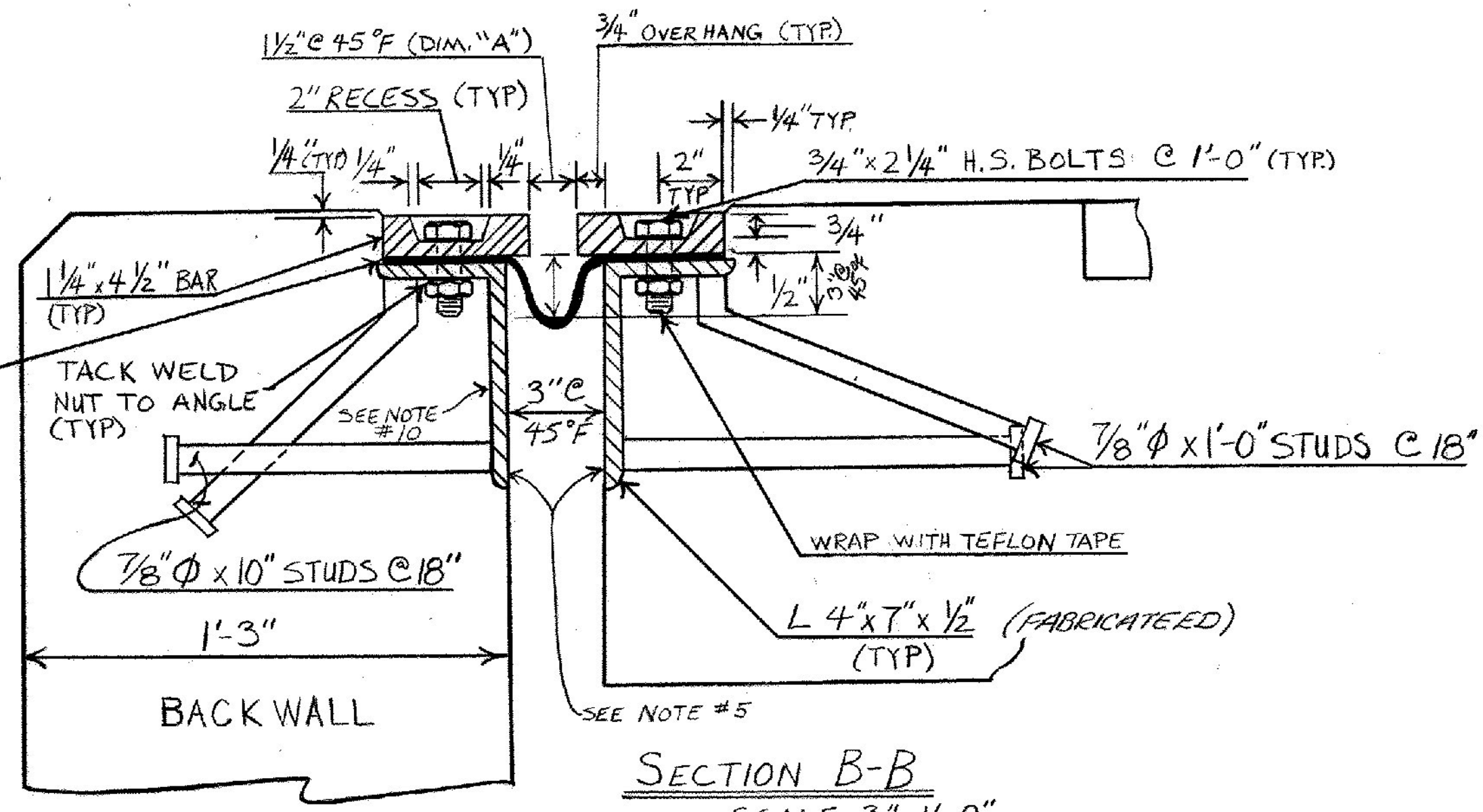
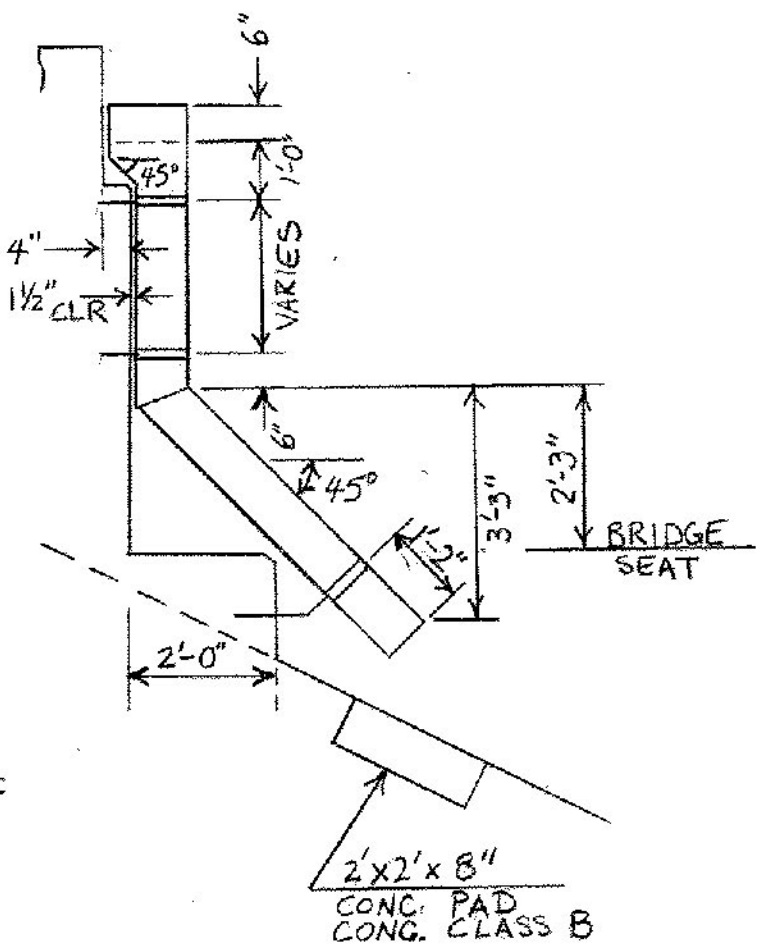
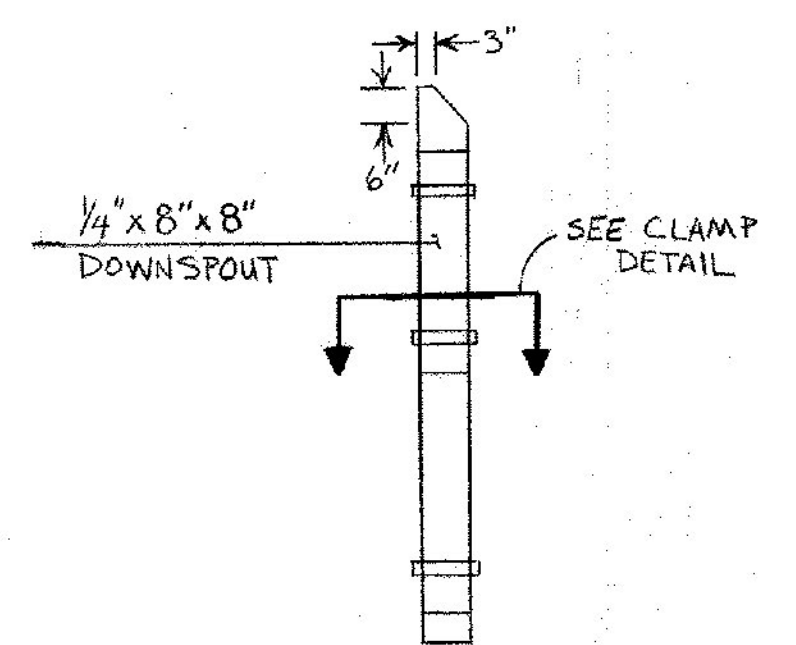
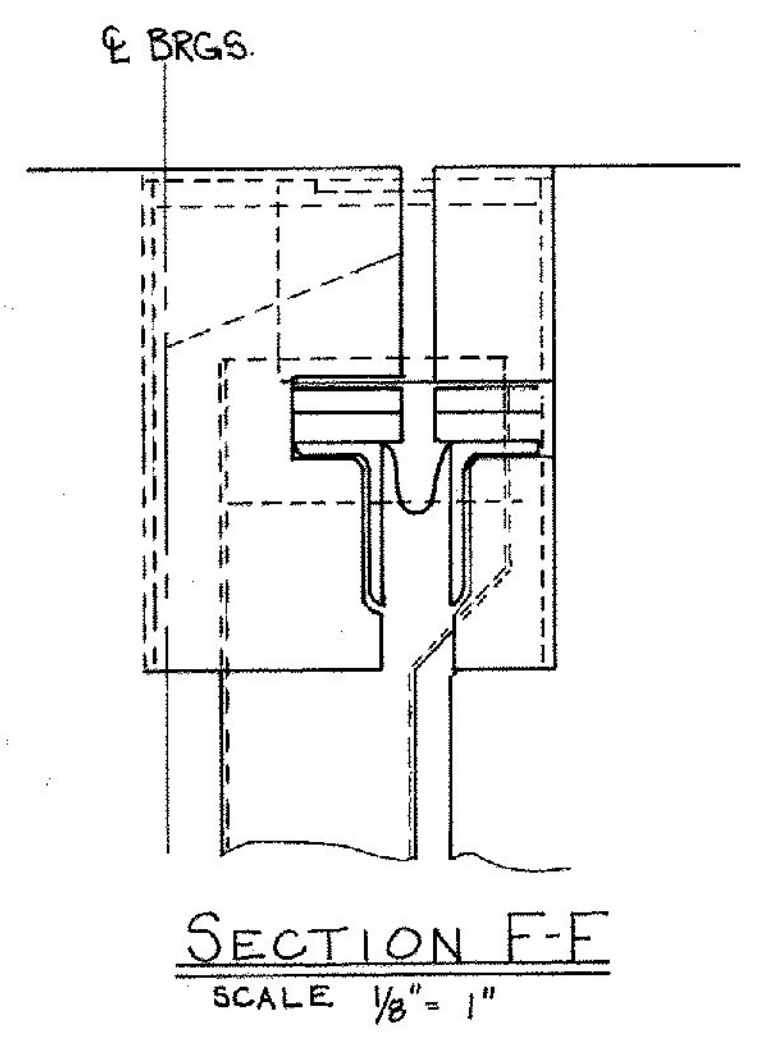
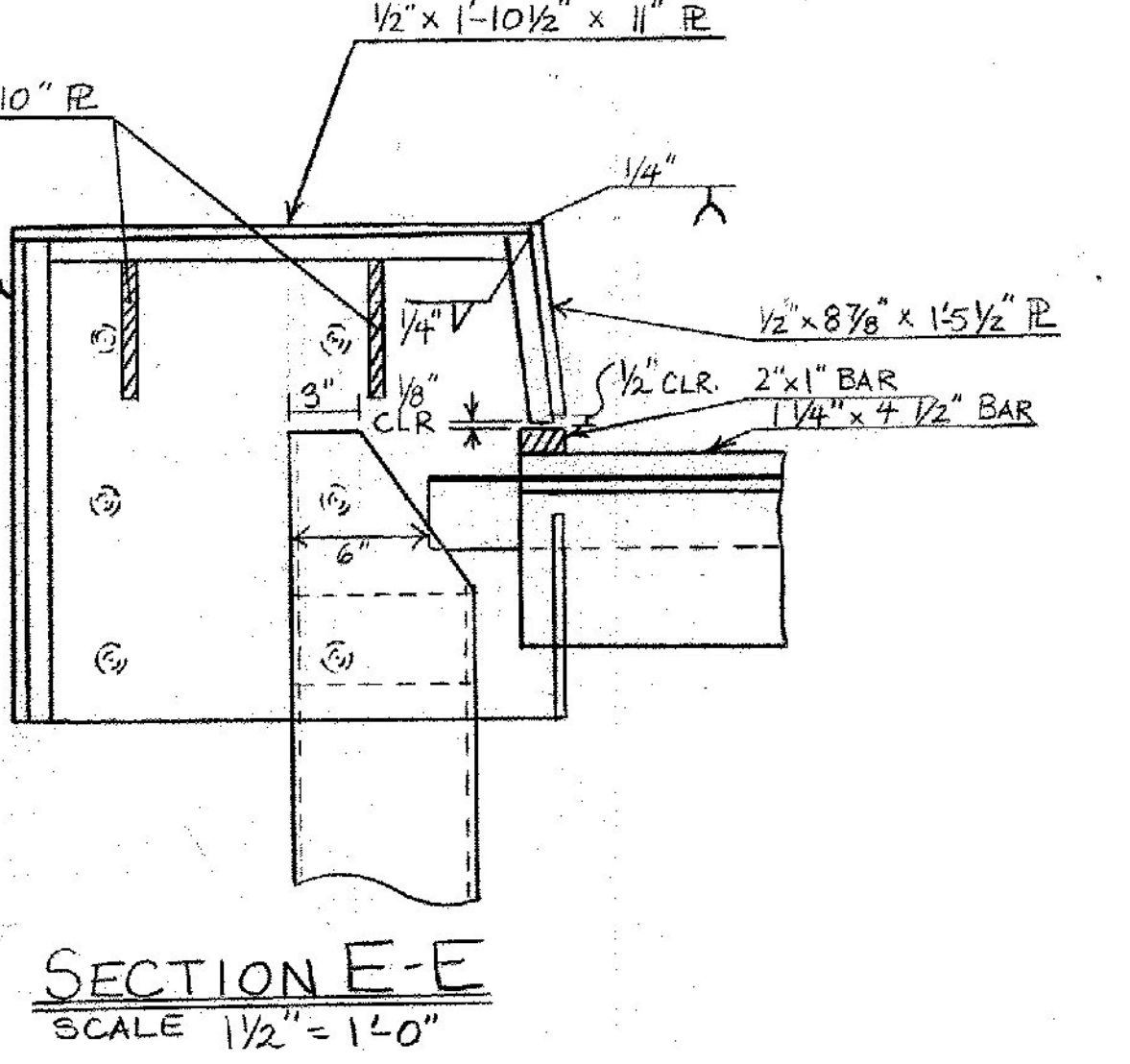
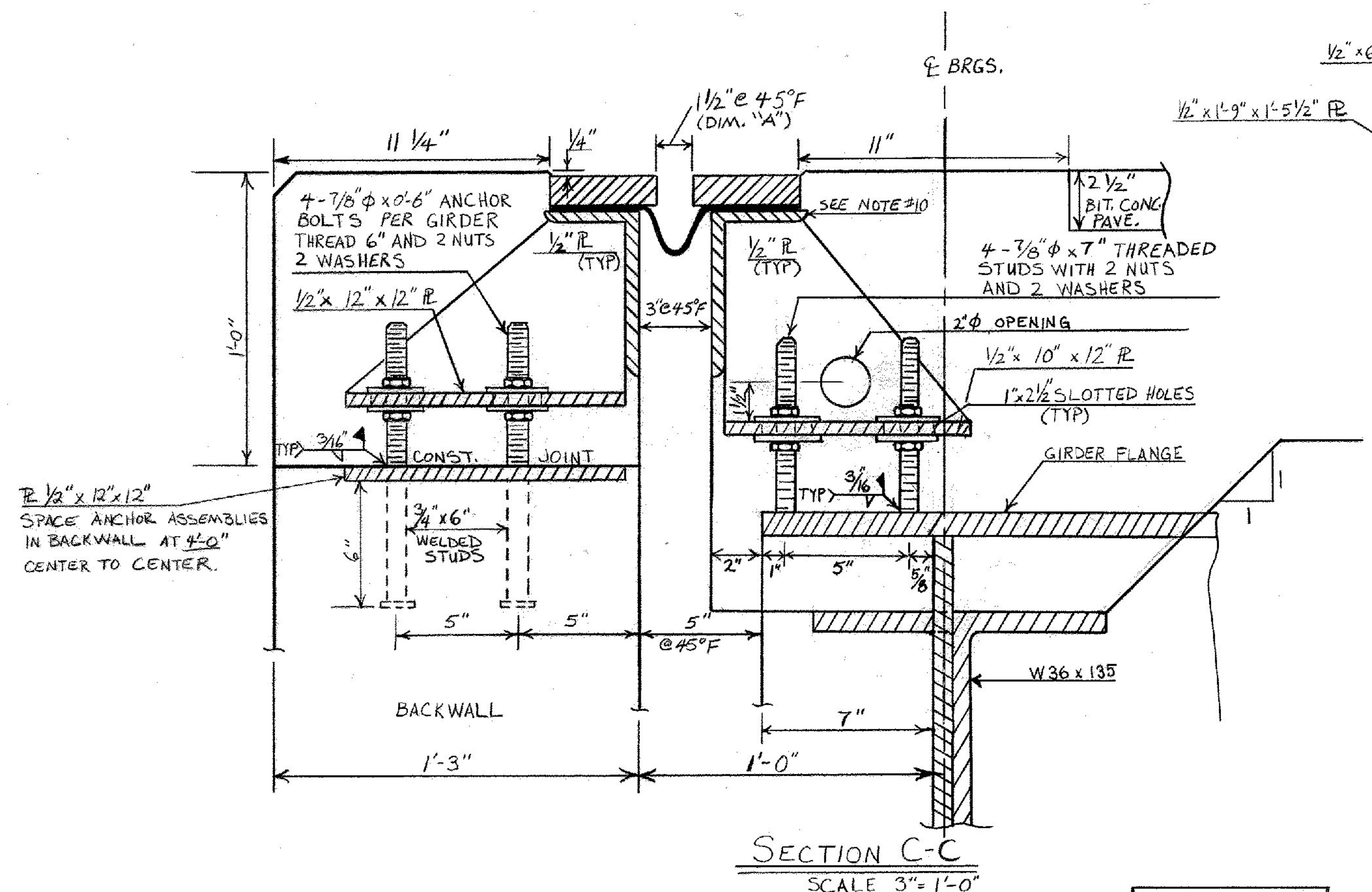


16" WIDE, 2 PLY POLYESTER DRAIN TROUGH 1/8" MIN. THICKNESS (SEE SECTION 707.13) PLACE 1/16" x 3" BUTYL RUBBER TAPE CENTERED ON LINE OF BOLTS (TAPE SHALL CONFORM TO MILITARY SPEC. MIL-C-1896A TYPE II)



**NOTES**

1. THE FINAL FINISH OF THE EXPANSION DAM SHALL BE COVERED DURING THE PLACING OF THE BRIDGE DECK CONCRETE.
2. ALL STEEL COMPONENTS SHALL BE A.S.T.M. A-36 GALVANIZED, OR METALIZED AS PER SECTION 731.06, UNLESS OTHERWISE NOTED.
3. ALL CURB PLATES SHALL BE A.S.T.M. A-36 STEEL AND GALVANIZED. CURB PLATES AND WELDED STUDS SHALL BE INCLUDED IN THE COST PER LINEAR FOOT BID FOR ITEM 516.33, "ELASTOMERIC EXPANSION DAM (3" MOVEMENT)". THE CURB PLATES SHALL BE GALVANIZED AND PAINTED GRAY IN COLOR (FEDERAL COLOR NO. 26493) IN ACCORDANCE WITH THE SPECIAL PROVISION 708.09, "PAINTING HOT DIP GALVANIZED STEEL".
4. THE 1-1/4" x 4-1/2" PLATES SHALL BE FURNISHED IN 4 LENGTHS (SEE BREAKS ON "EXPANSION PLATES PLAN", BR. SHT. 612. THE ANGLES 7" x 4" x 1/2" SHALL BE FURNISHED IN CONTINUOUS LENGTHS. THE FABRIC TROUGH SHALL BE CONTINUOUS PREFORMED FABRIC MATERIAL CONFORMING TO SECTION 707.13.
5. THE HOPPERS AND DOWNSPOUTS SHALL BE A-36 GALVANIZED.  
PAYMENT FOR HOPPERS AND DOWNSPOUTS SHALL BE THE UNIT PRICE BID PER POUND FOR STRUCTURAL STEEL.
6. DRIP BEADS OF 1/4" x 4" TWO-PLY POLYESTER MATERIAL SHALL BE CEMENTED TO THE CENTER OF EACH END OF THE FABRIC TROUGH WITH AN ADHESIVE APPROVED BY THE MANUFACTURER.
7. FOR LOCATION OF SECTIONS B-B THRU F-F, SEE BR. SHT. NO. 612.
8. FOR 1/2" TO 3/4" PLATES, USE 1/4" FILLET WELD. FOR 3/4" TO 1-1/2" PLATES, USE 5/16" FILLET WELD. GROOVE WELDS SHALL BE FOR 1/2" DEPTH OF PLATE. ALL PLATES SHALL BE WELDED BOTH SIDES.
9. COAT CONCRETE CONTACT SURFACES WITH AN EPOXY BONDING COMPOUND MEETING THE REQUIREMENTS OF SUBSECTION 719.03. PAYMENT TO BE INCLUDED UNDER THE UNIT PRICE BID FOR ITEM 516.33, "ELASTOMERIC EXPANSION DAM (3" MOVEMENT)".
10. OPTIONAL JOINT DETAILS SIMILAR TO THOSE SHOWN ON BR. 510 MAY BE SUBMITTED FOR APPROVAL PROVIDED THE ANCHORAGE SYSTEM SHOWN ON THIS SHEET IS MAINTAINED. IN THE EVENT THAT THIS OPTIONAL JOINT IS USED, THE HOPPERS AND DOWNSPOUTS SHALL BE OMITTED.



SETTING TABLE	
TEMP.	DIM. "A"
0°F	2 1/8"
15°F	1 7/8"
30°F	1 1/2"
45°F	1 1/4"
60°F	1 1/8"
75°F	1 1/16"
90°F	7/8"
105°F	11/16"

**STATE OF VERMONT**  
**AGENCY OF TRANSPORTATION**

TOWN OF <b>RUTLAND</b>	Bridge No. <b>7</b>
HIGHWAY NO. <b>U.S. 4</b>	Log Sta.
Surv. Sta. <b>945+00</b>	
<b>EXPANSION JOINT DETAILS - II</b>	
<b>U.S. 4 OVER OTTER CREEK</b>	
Designed by <b>G.V. SPILAK</b>	Drawn by <b>S. JUNG</b>
Checked by <b>A. Elwood</b> date <b>8-83</b>	Bridge Design Supervisor <b>R.S. HAUPT</b> date
PROJECT <b>WEST RUTLAND - RUTLAND</b>	PROJECT NO. <b>F020-1 (10)</b>
Bridge Sheet No. <b>BR 6/3</b>	Sheet <b>131</b> of <b>459</b>