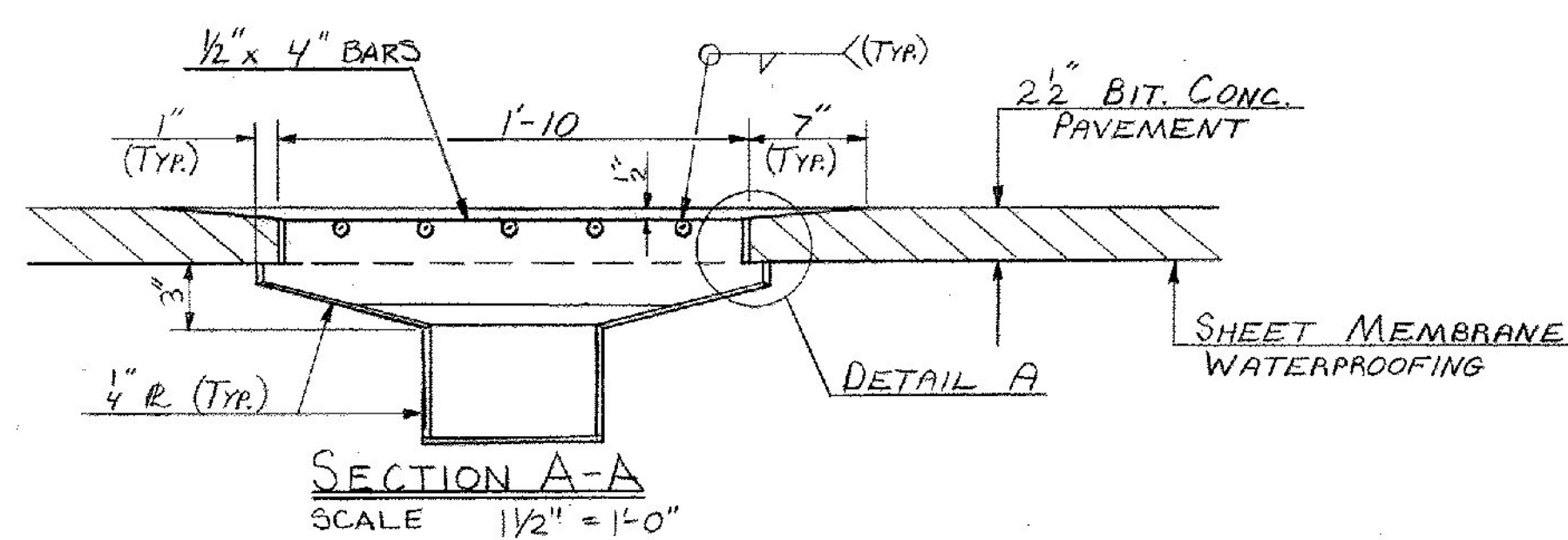
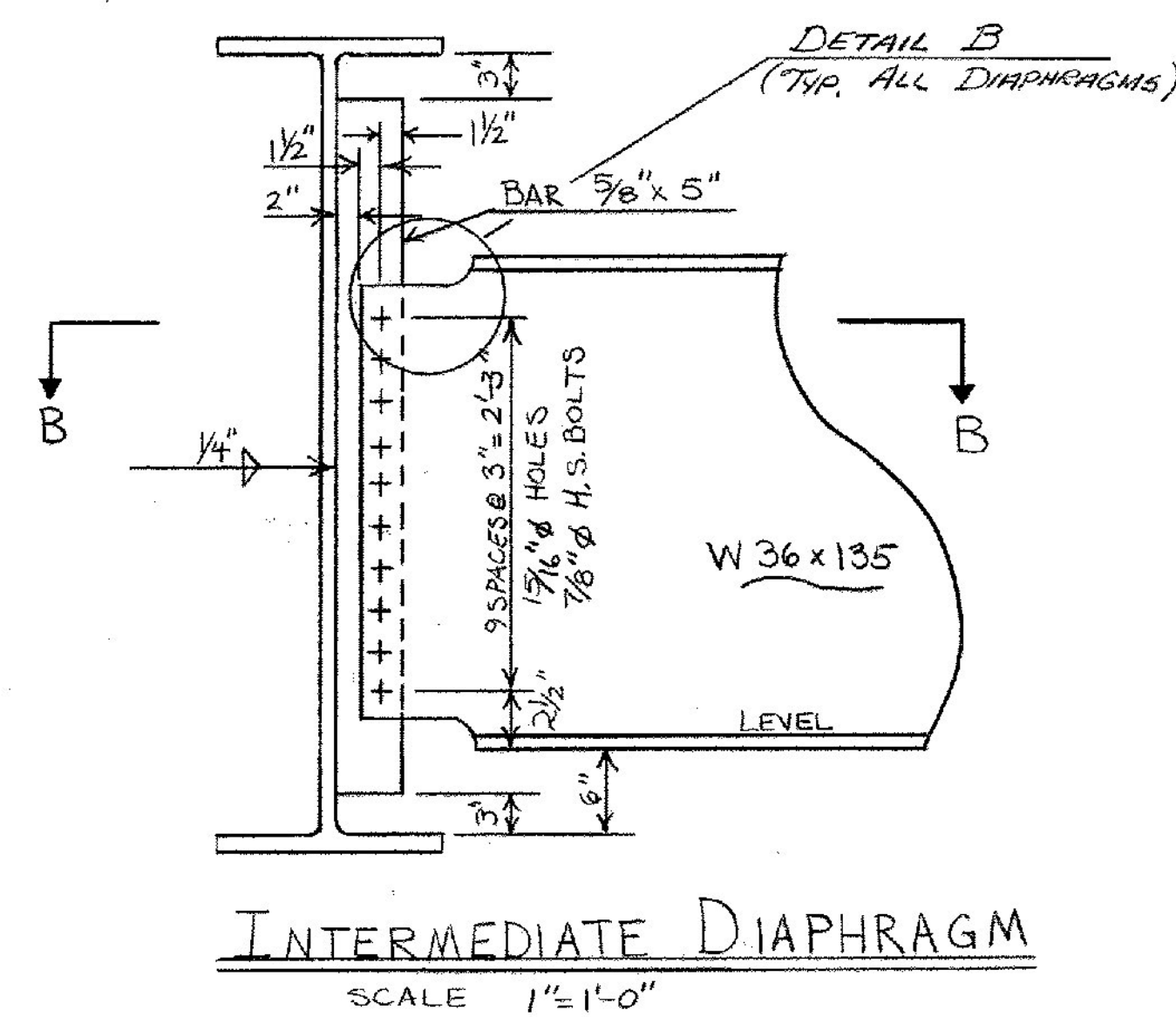


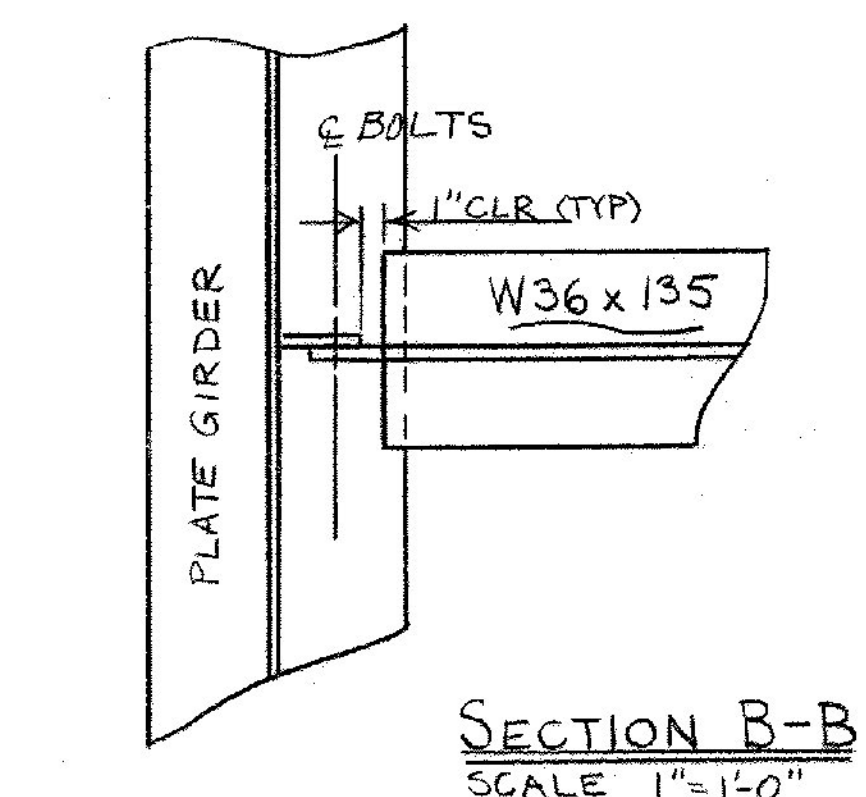
SCUPPER PLAN
SCALE 1 1/2" = 1'-0"



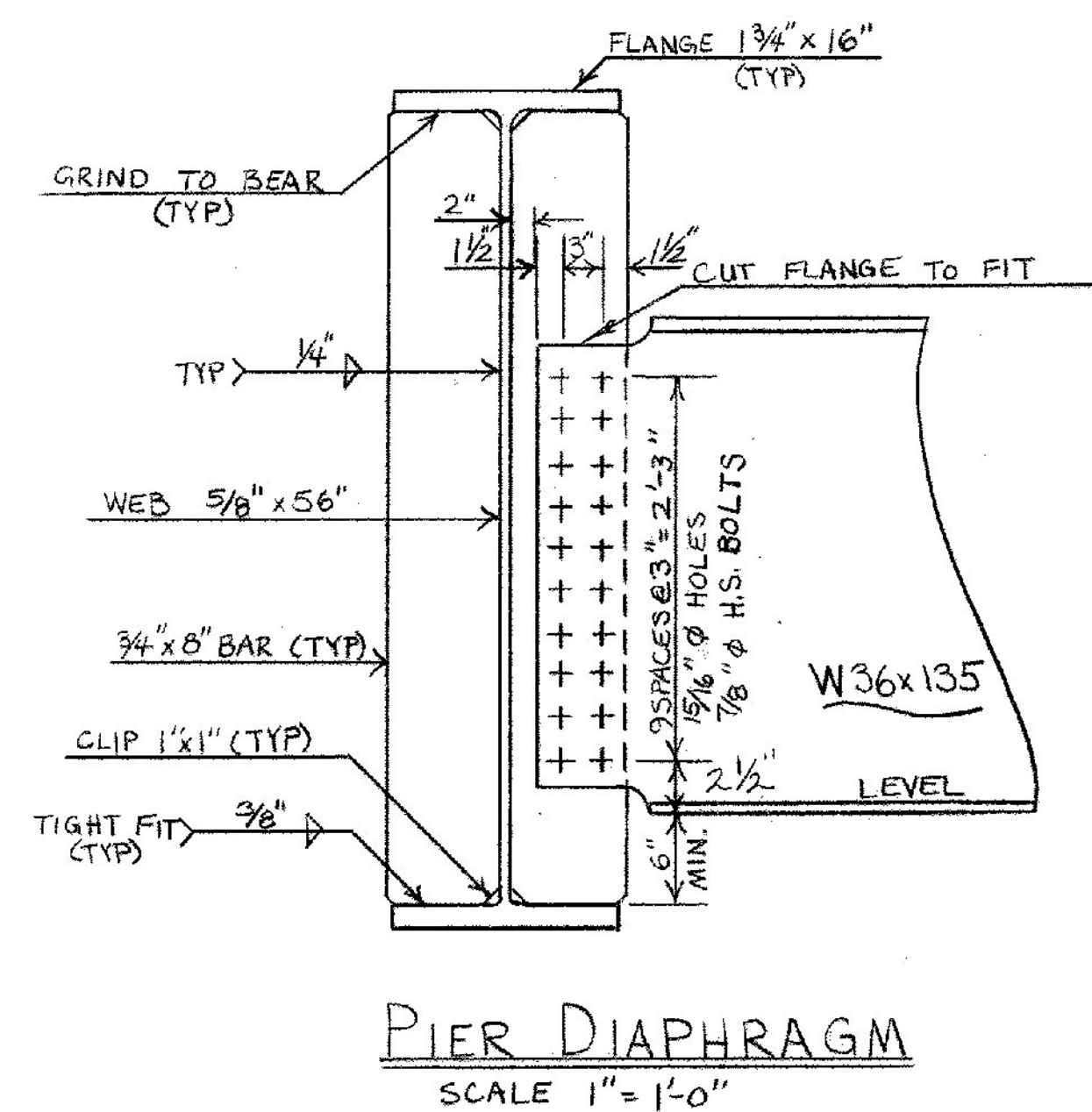
SECTION A-A
SCALE 1 1/2" = 1'-0"



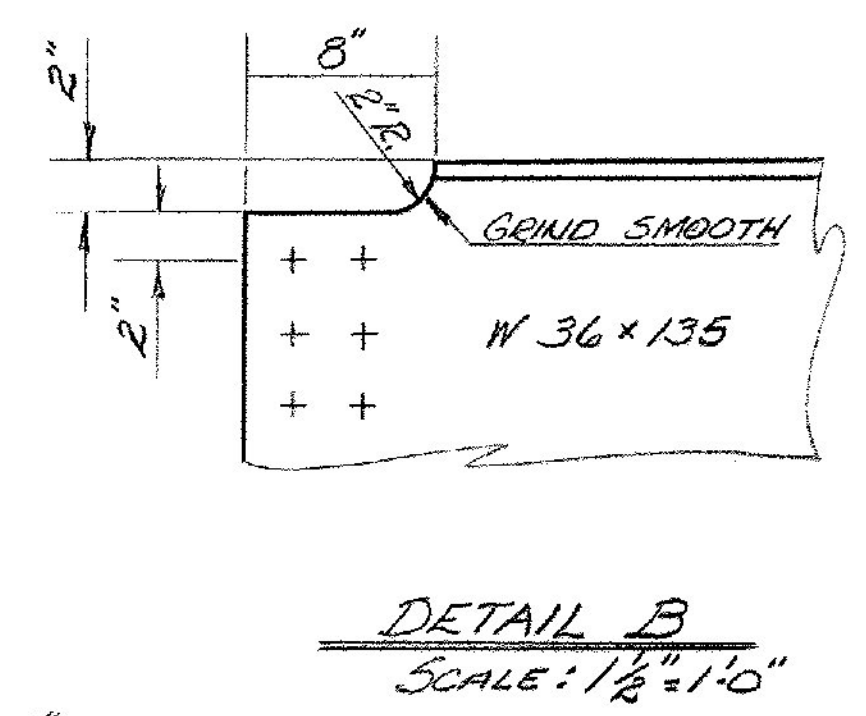
INTERMEDIATE DIAPHRAGM
SCALE 1" = 1'-0"



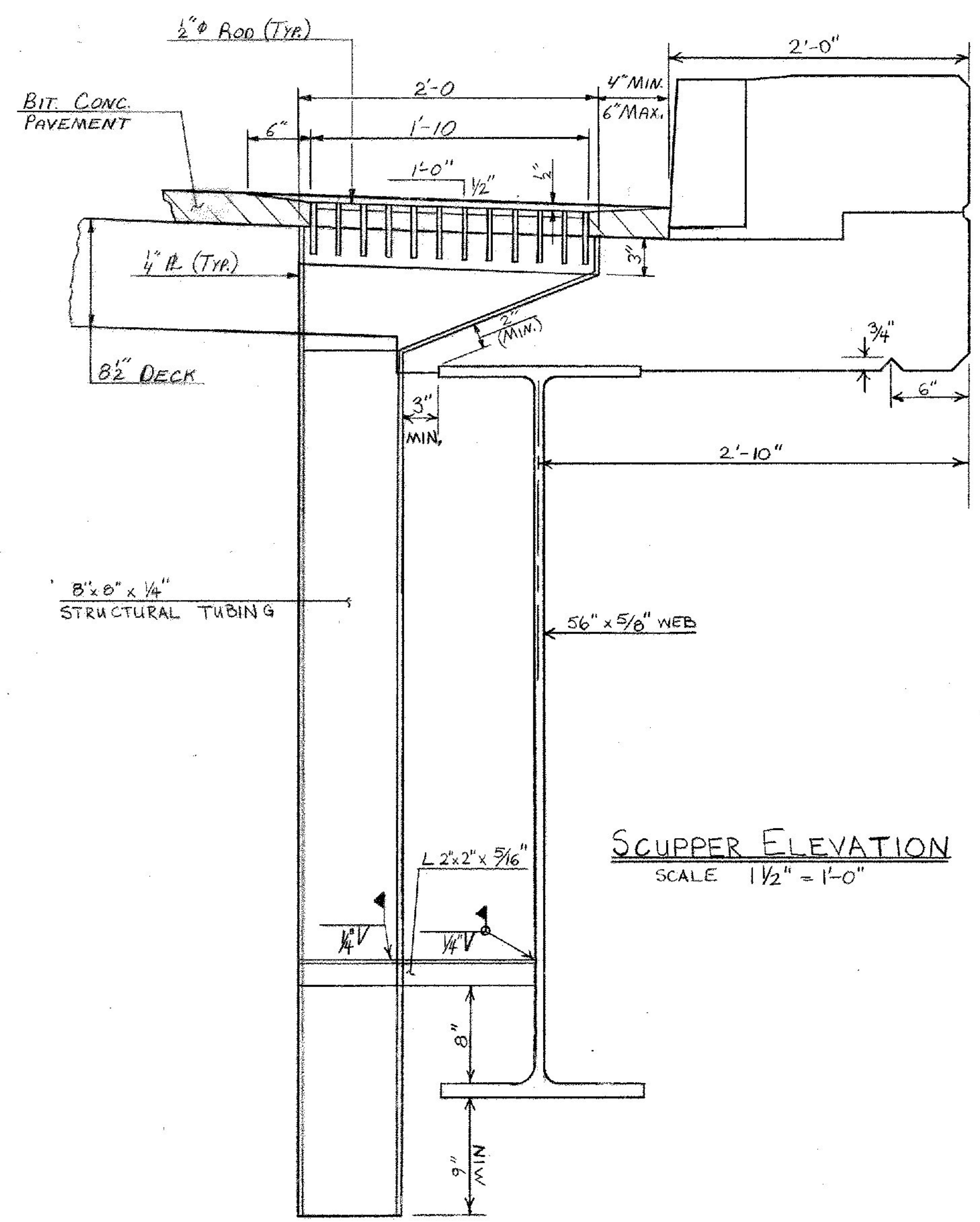
SECTION B-B
SCALE 1" = 1'-0"



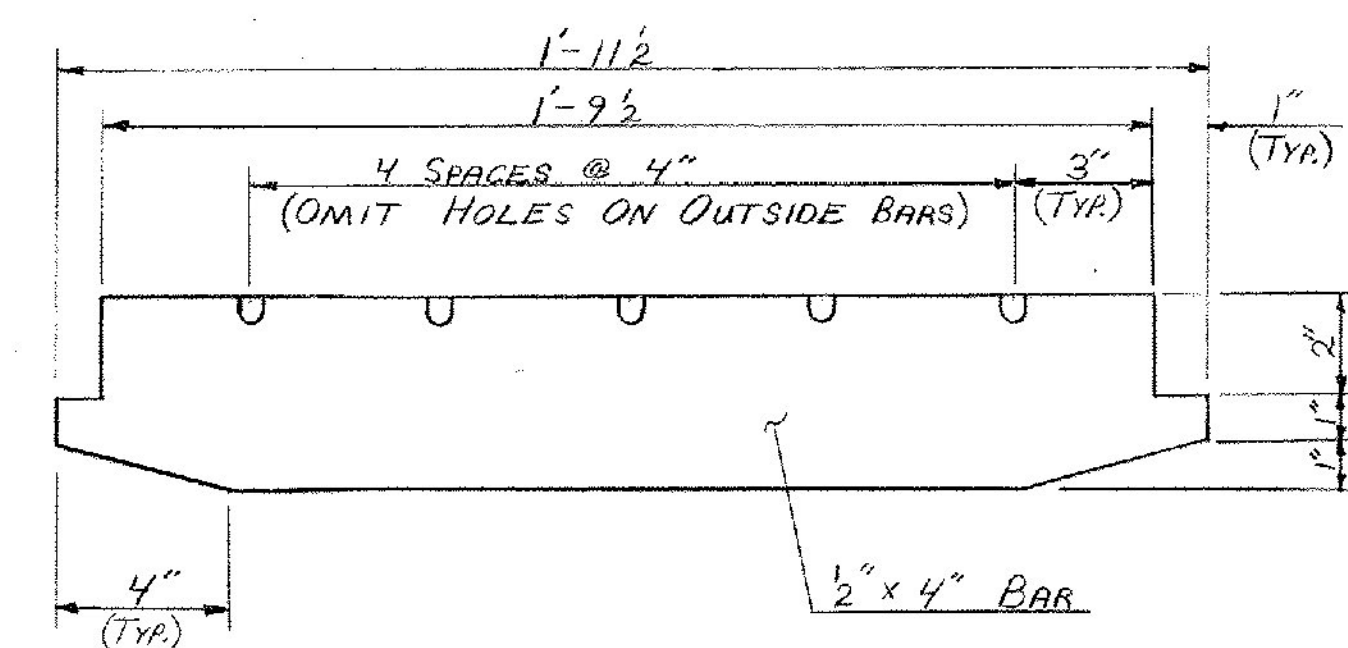
PIER DIAPHRAGM
SCALE 1" = 1'-0"



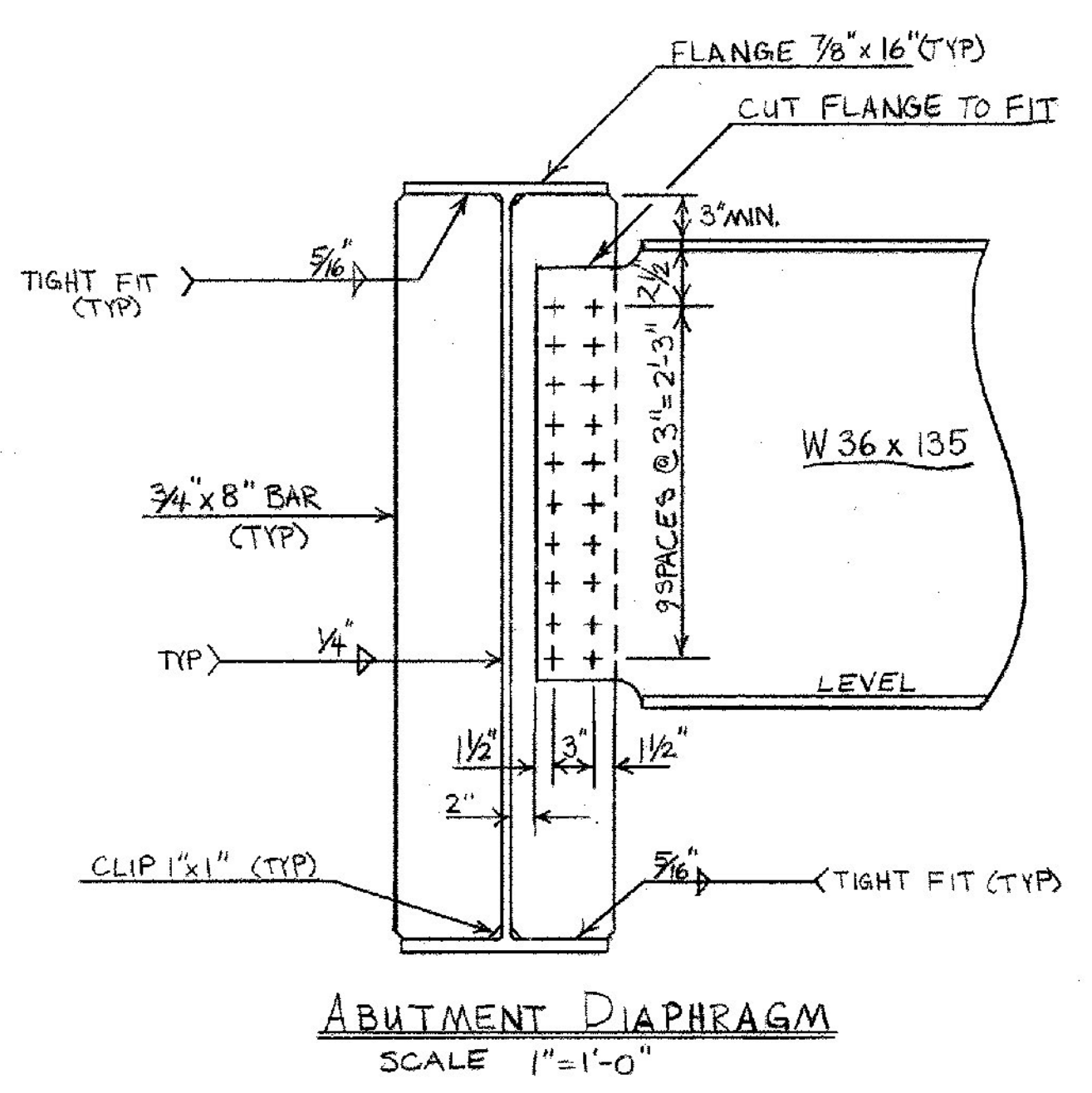
DETAIL B
SCALE 1 1/2" = 1'-0"



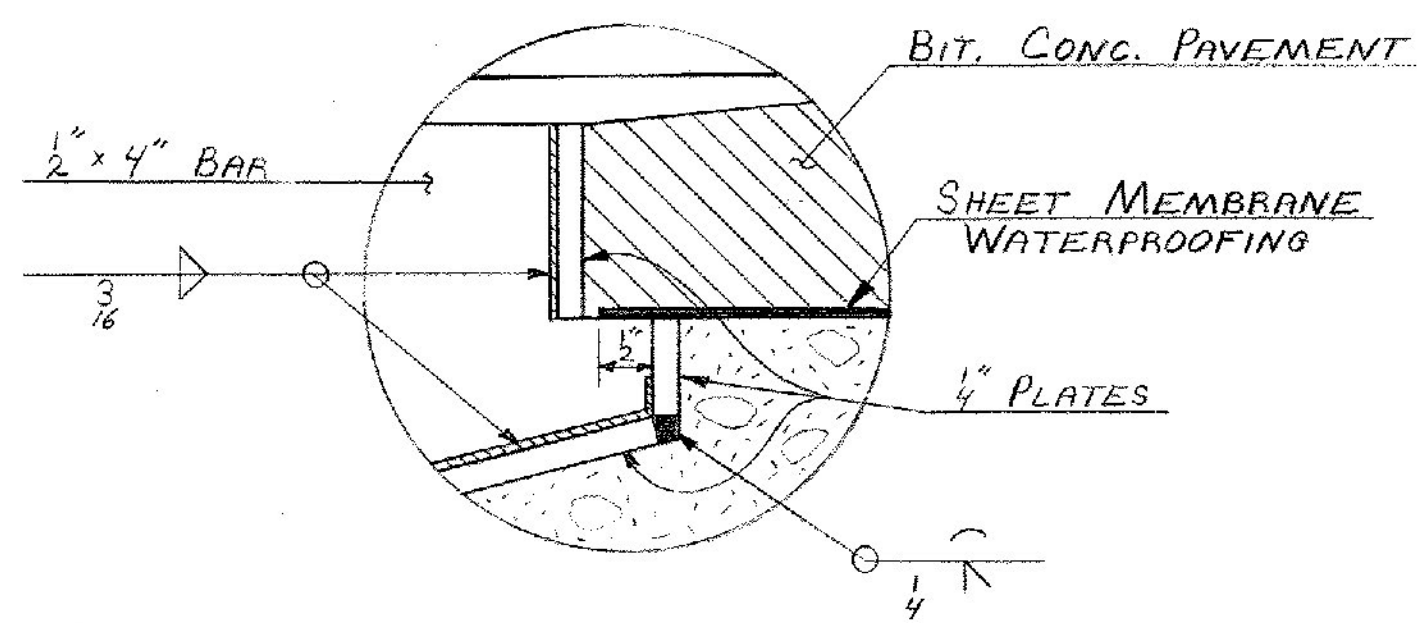
SCUPPER ELEVATION
SCALE 1 1/2" = 1'-0"



SCUPPER GRATE BAR DETAIL
SCALE 3" = 1'-0"



ABUTMENT DIAPHRAGM
SCALE 1" = 1'-0"



DETAIL A
SCALE 1/2" = 1"

- NOTES:
- HOLLOW STRUCTURAL STEEL TUBING SHALL CONFORM TO ASTM A-500 OR A-501. ALL PLATES, BARS, AND ANGLES SHALL CONFORM TO ASTM A-36.
 - ALL SCUPPERS SHALL BE GALVANIZED ACCORDING TO ASTM A-123 AFTER FABRICATION.
 - TOP SURFACE OF SCUPPERS MUST BE SLOPED TO MATCH ROADWAY CROSS SLOPE AND GRADE.

STATE OF VERMONT	
AGENCY OF TRANSPORTATION	
TOWN OF RUTLAND	Bridge No. 6
HIGHWAY NO. US 4	Log Sta. 945+00
CROSSFRAME & SCUPPER DETAILS	
US 4 BRG OVER OTTER CREEK	
Designed by R.P. GENDRON	Drawn by S. JUNG
Checked by A. Elwood date 8-03	Bridge Design Supervisor RS. HAUPT date
PROJECT WEST RUTLAND - RUTLAND	PROJECT NO. FOZO-1(10)
Bridge Sheet No. BR 609	Sheet 127 of 459