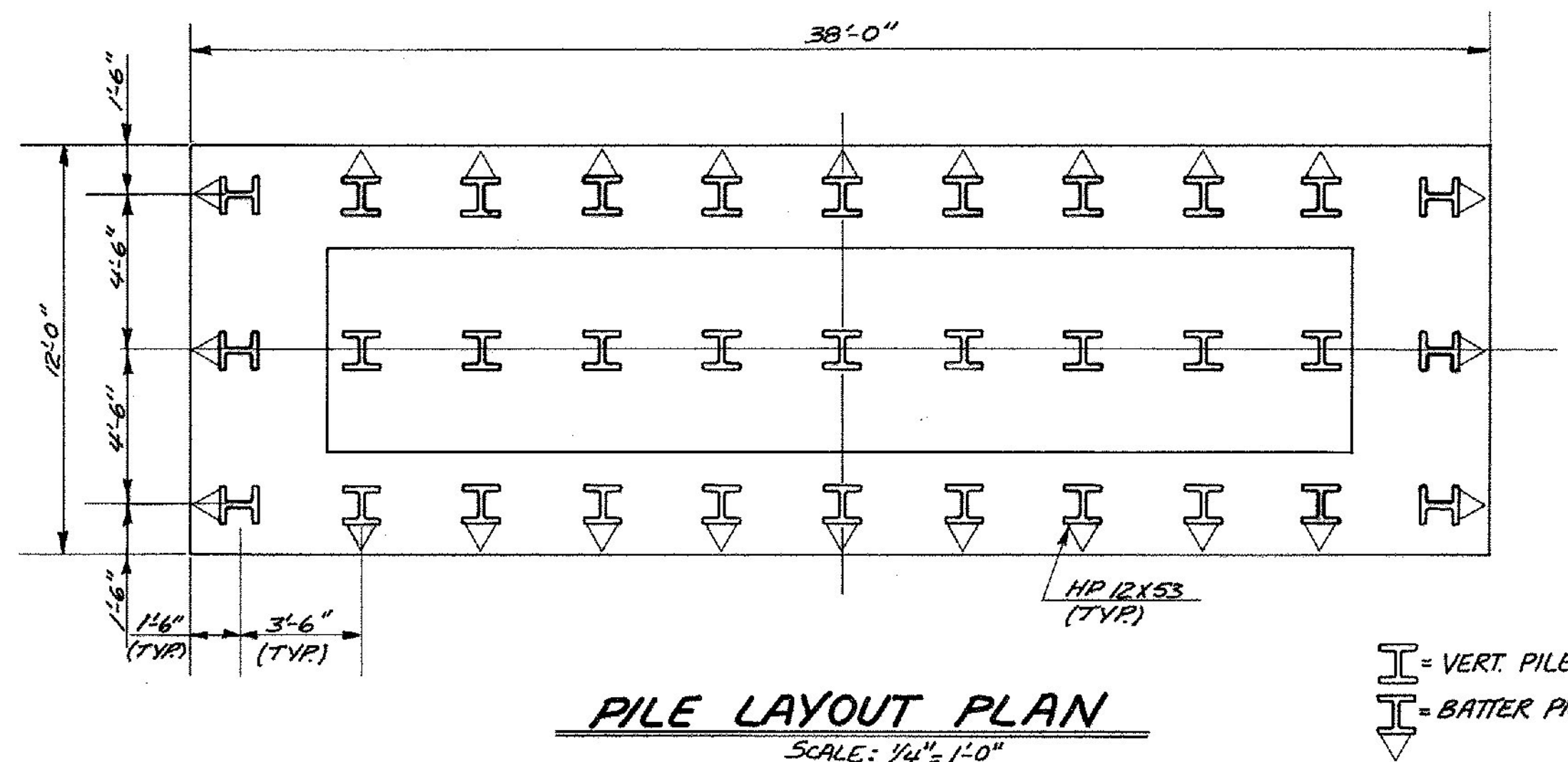


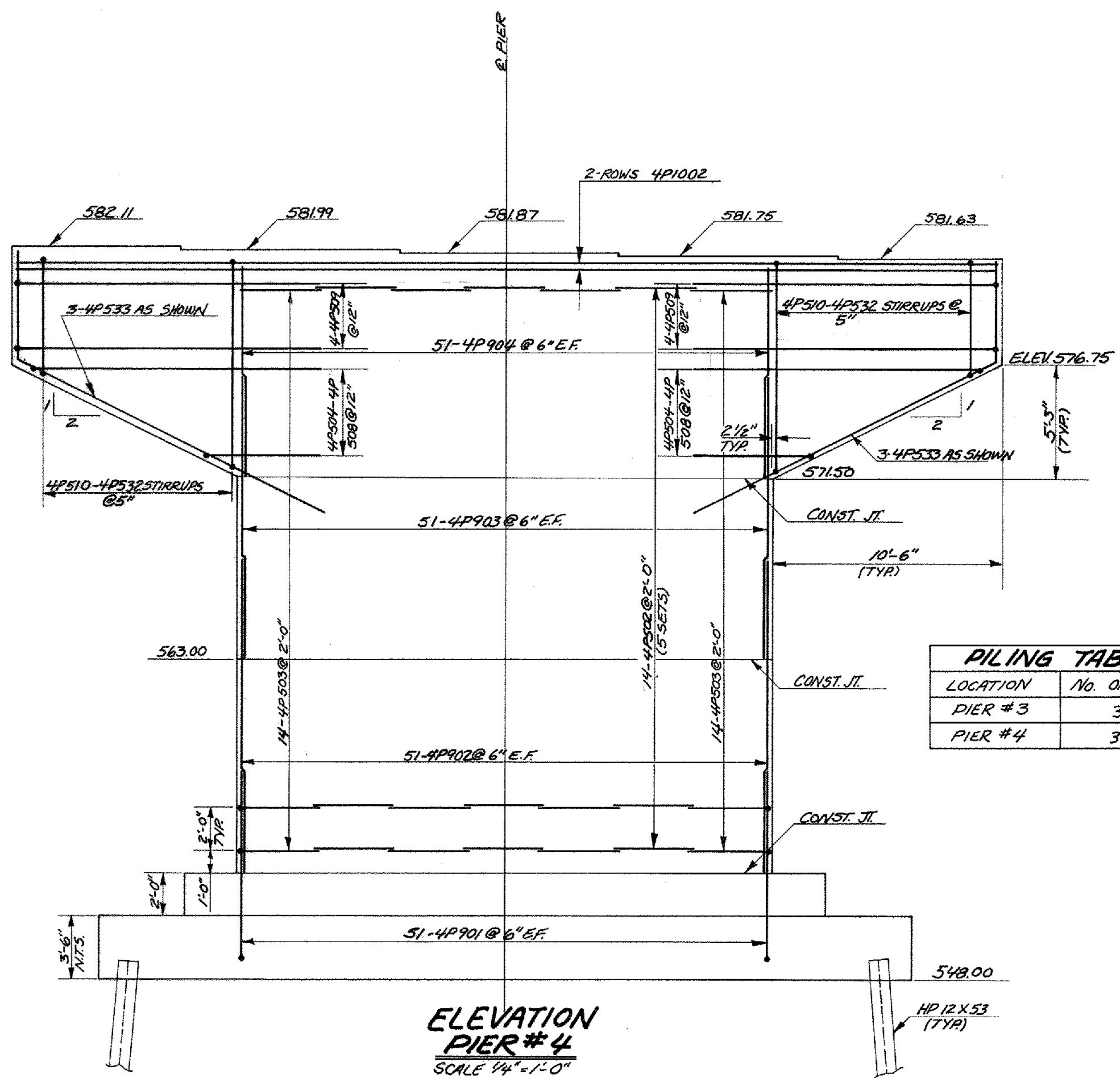
**PLAN**  
SCALE 1/4" = 1'-0"



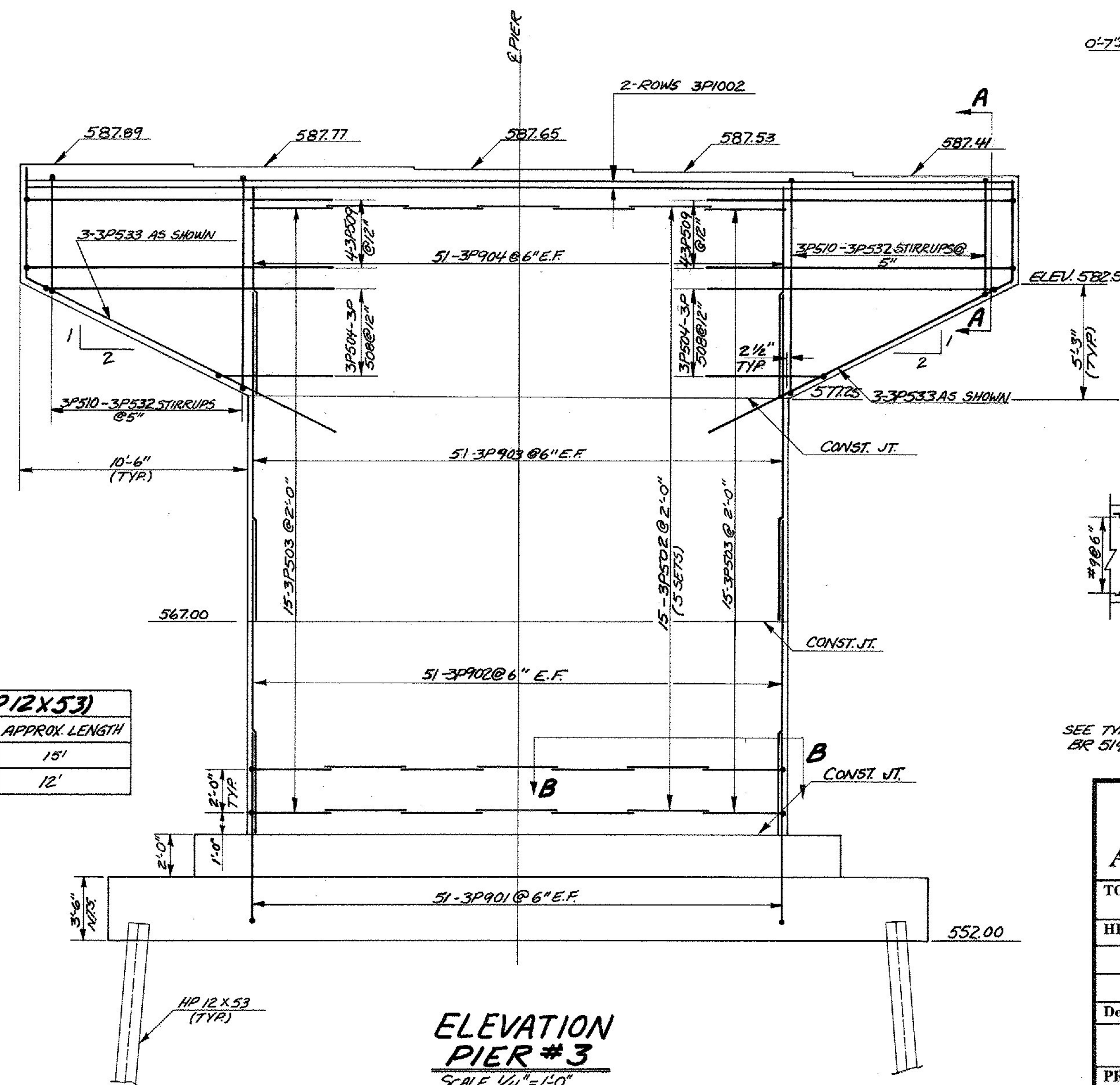
**PILE LAYOUT PLAN**  
SCALE: 1/4" = 1'-0"

↑ = VERT. PILE  
↓ = BATTER PILE

NOTE: #10 BARS AT TOP OF PIER MAY BE MOVED SO THAT THERE IS NO INTERFERENCE WITH BEARING ANCHOR BOLTS. MINIMUM LATERAL SPACING OF #10 BARS IS 2"

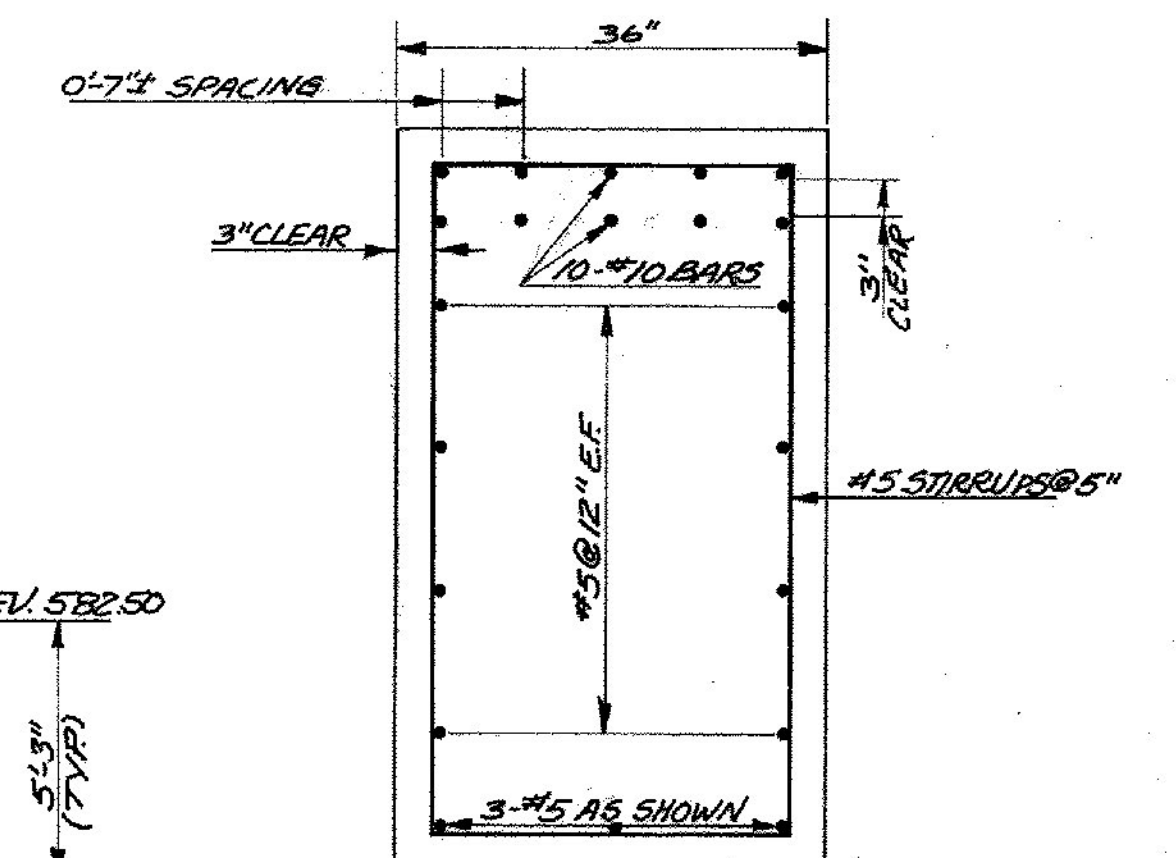


**ELEVATION PIER #4**  
SCALE 1/4" = 1'-0"

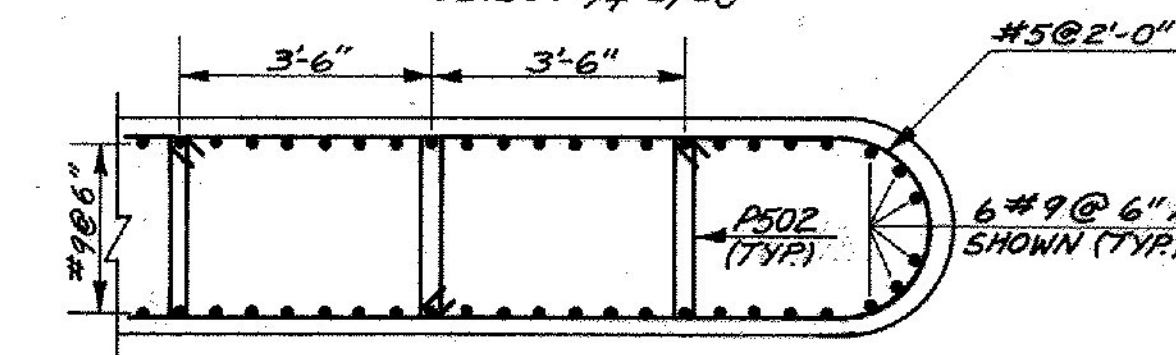


**ELEVATION PIER #3**  
SCALE 1/4" = 1'-0"

PILING TABLE (HP12X53)		
LOCATION	No. OF PILES	APPROX LENGTH
PIER #3	33	15'
PIER #4	33	12'



**SECTION A-A**  
SCALE 3/4" = 1'-0"



**SECTION B-B**  
SCALE 3/4" = 1'-0"

SEE TYPICAL PIER SECTION & PIER FOOTING REINFORCING STEEL SHEET BR 514.

<b>STATE OF VERMONT</b>	
<b>AGENCY OF TRANSPORTATION</b>	
TOWN OF <b>RUTLAND</b>	Bridge No. <b>5</b>
HIGHWAY NO. <b>U.S. RTE # 4</b>	Log Sta. _____
<b>U.S. RTE # 4 OVER DORR DRIVE</b>	
<b>PIER #3 &amp; #4 DETAILS</b>	
Designed by <b>J.B. MCCARTHY</b>	Drawn by <b>L.C. GATES</b>
Checked by <b>D.F. HEWITT</b>	Bridge Design Supervisor
date <b>8/85</b>	F.W. Balkum date <b>12/83</b>
PROJECT <b>WEST RUTLAND - RUTLAND</b>	PROJECT NO. <b>F-EGC-F-020-100</b>
Bridge Sheet No. <b>BR520</b>	Sheet <b>110</b> of <b>459</b>