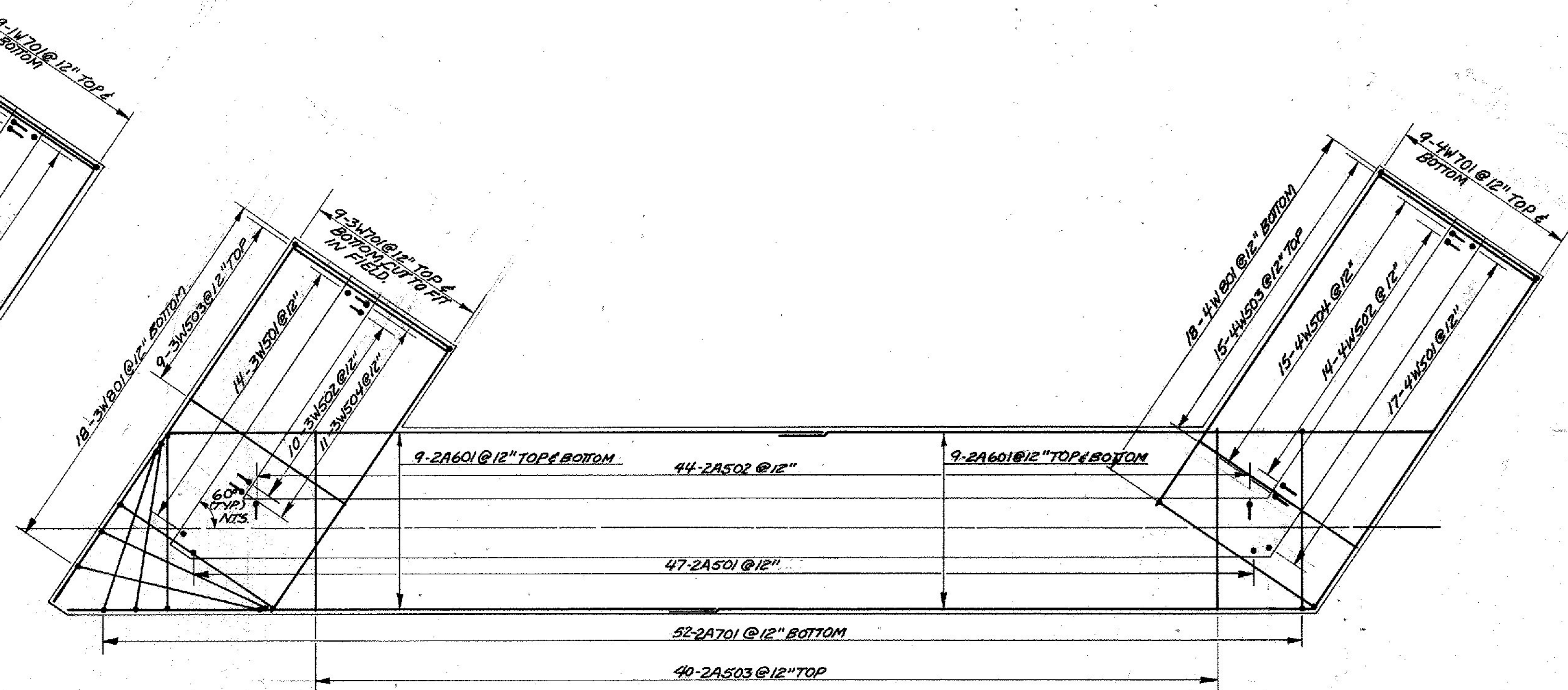
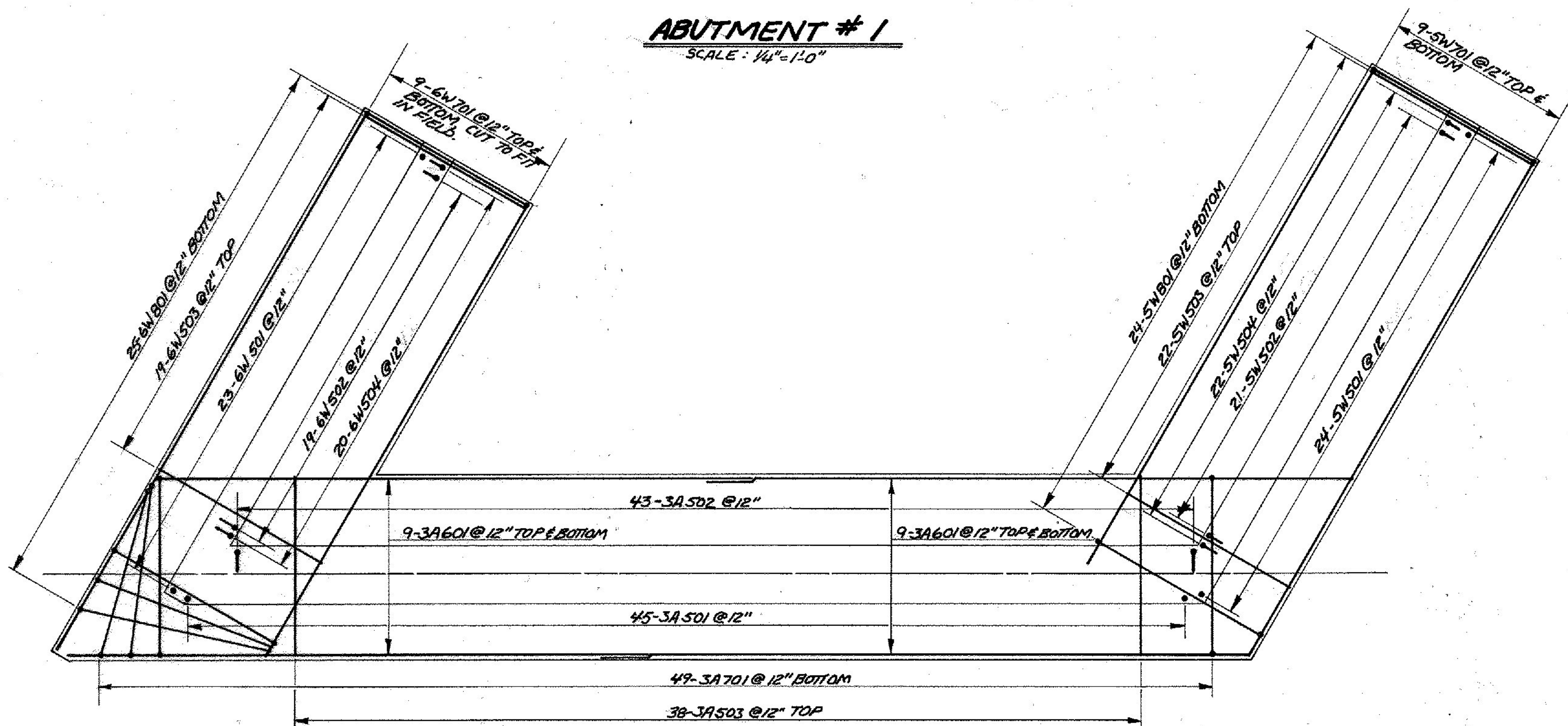


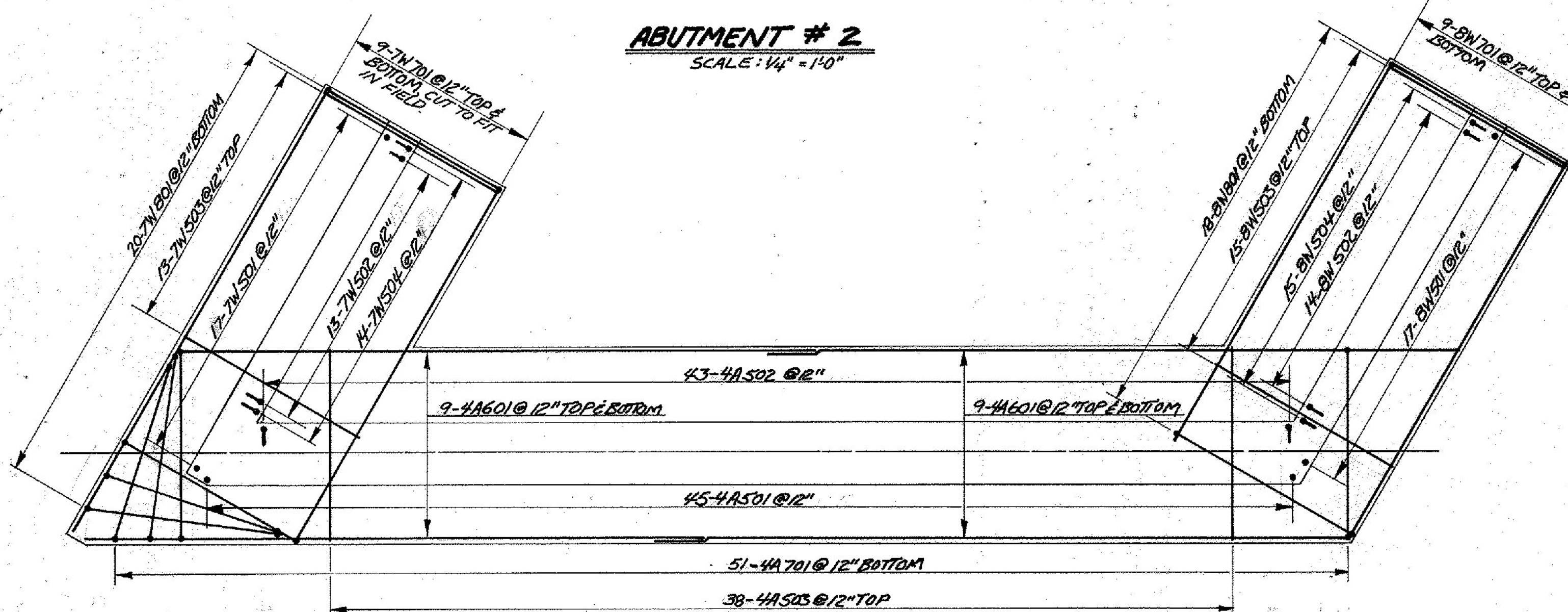
**ABUTMENT # 1**  
SCALE: 1/4" = 1'-0"



**ABUTMENT # 2**  
SCALE: 1/4" = 1'-0"



**ABUTMENT # 3**  
SCALE: 1/4" = 1'-0"



**ABUTMENT # 4**  
SCALE: 1/4" = 1'-0"

<b>STATE OF VERMONT</b>	
<b>AGENCY OF TRANSPORTATION</b>	
TOWN OF <b>RUTLAND</b>	Bridge No. <b>5</b>
HIGHWAY NO. <b>U.S. RTE. 4</b>	Log Sta. <b>48 - 93/133</b>
	Surv. Sta. <b>48 - 93/181</b>
<b>U.S. RTE. 4 OVER DORR DRIVE</b>	
<b>ABUTMENT FOOTING STEEL DETAILS</b>	
Designed by <b>J.B. MCCARTHY</b>	Drawn by <b>LC. GATES</b>
Checked by <b>D. HEWITT</b>	Bridge Design Supervisor
date <b>8/83</b>	F.Y. Balkum date <b>12/83</b>
PROJECT <b>WEST RUTLAND-RUTLAND</b>	PROJECT NO. <b>F-EGC-F-020-1100</b>
Bridge Sheet No. <b>BR517</b>	Sheet <b>107</b> of <b>459</b>

BR-6