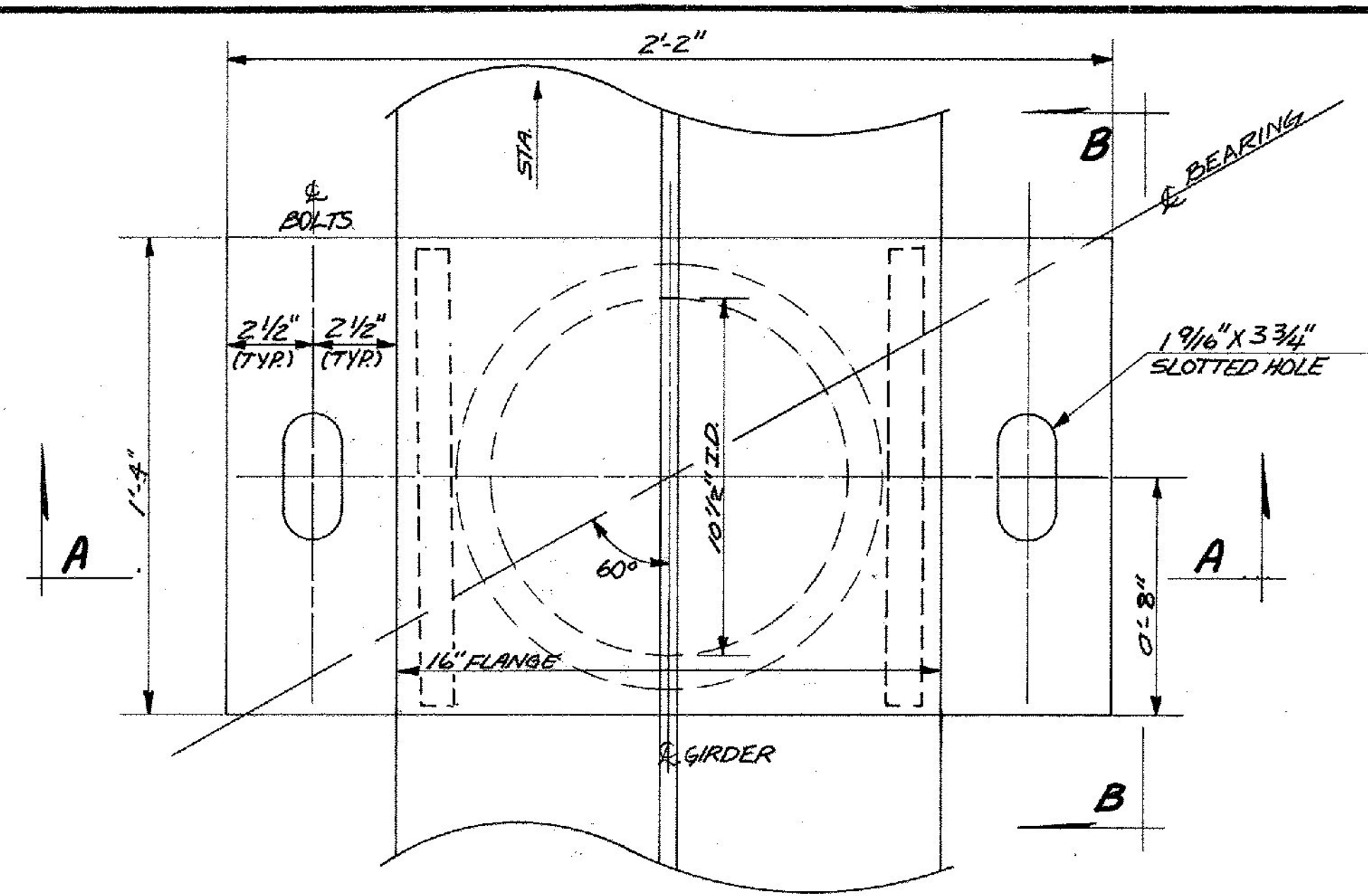
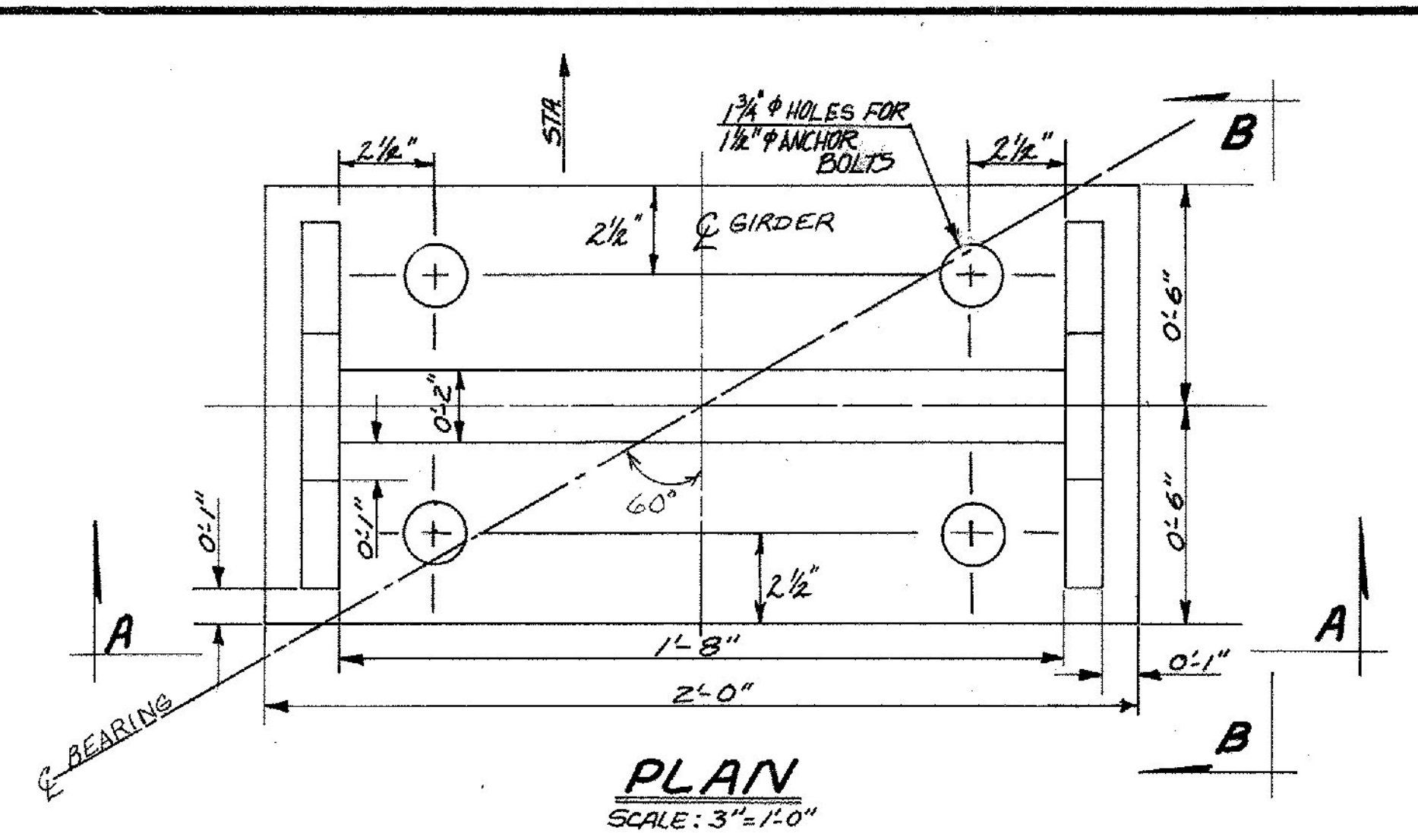


PLAN
SCALE: 3"=1'-0"

NOTE: ALL STEEL IN EXPANSION AND POT BEARING ASSEMBLIES SHALL BE GALVANIZED OR METALIZED AND SHALL BE A36. (ABUT. #2 & #4 AND PIERS #1 & #3)
SEE ALSO NOTES ON SHEET BR 512.

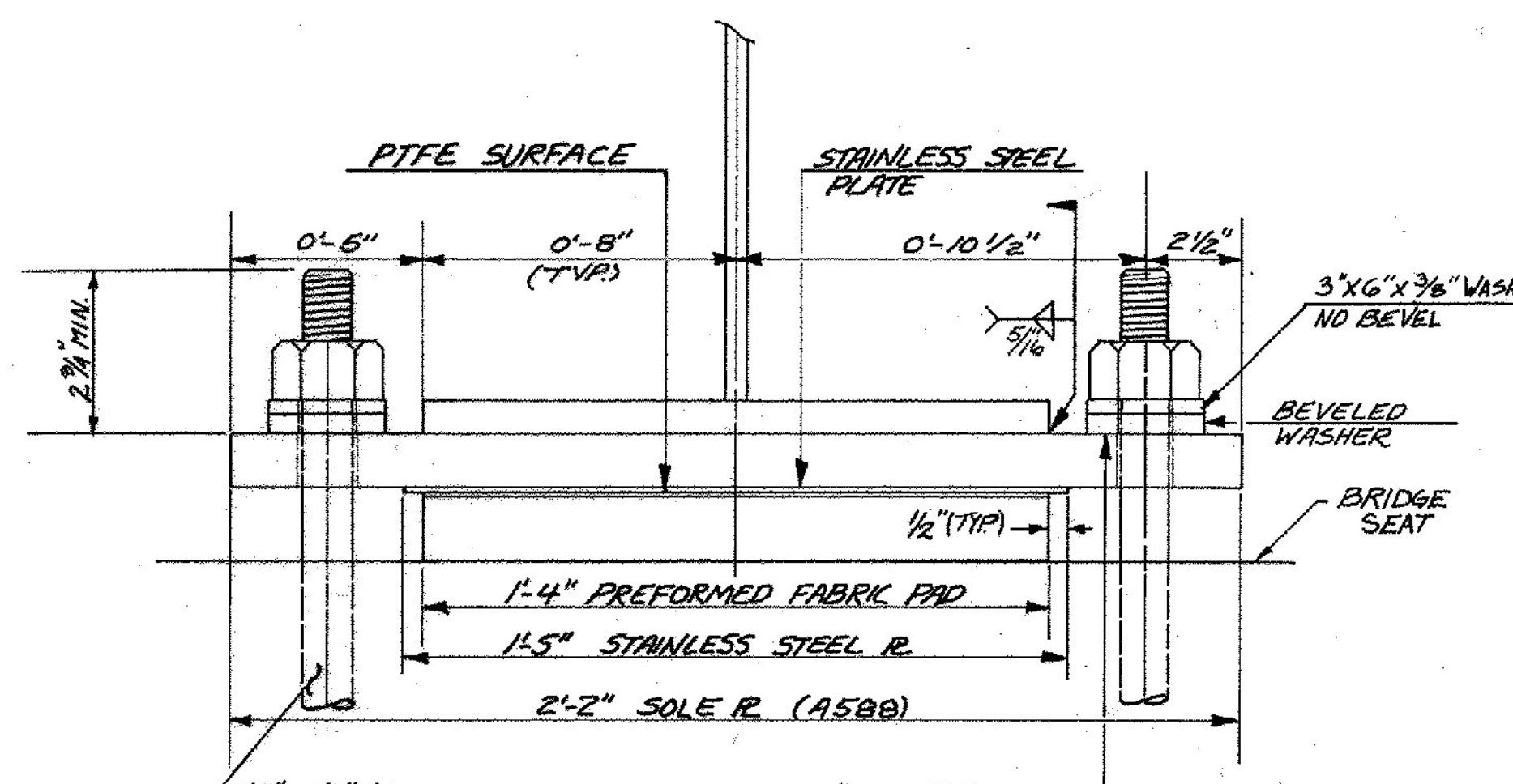


PLAN
SCALE: 3"=1'-0"

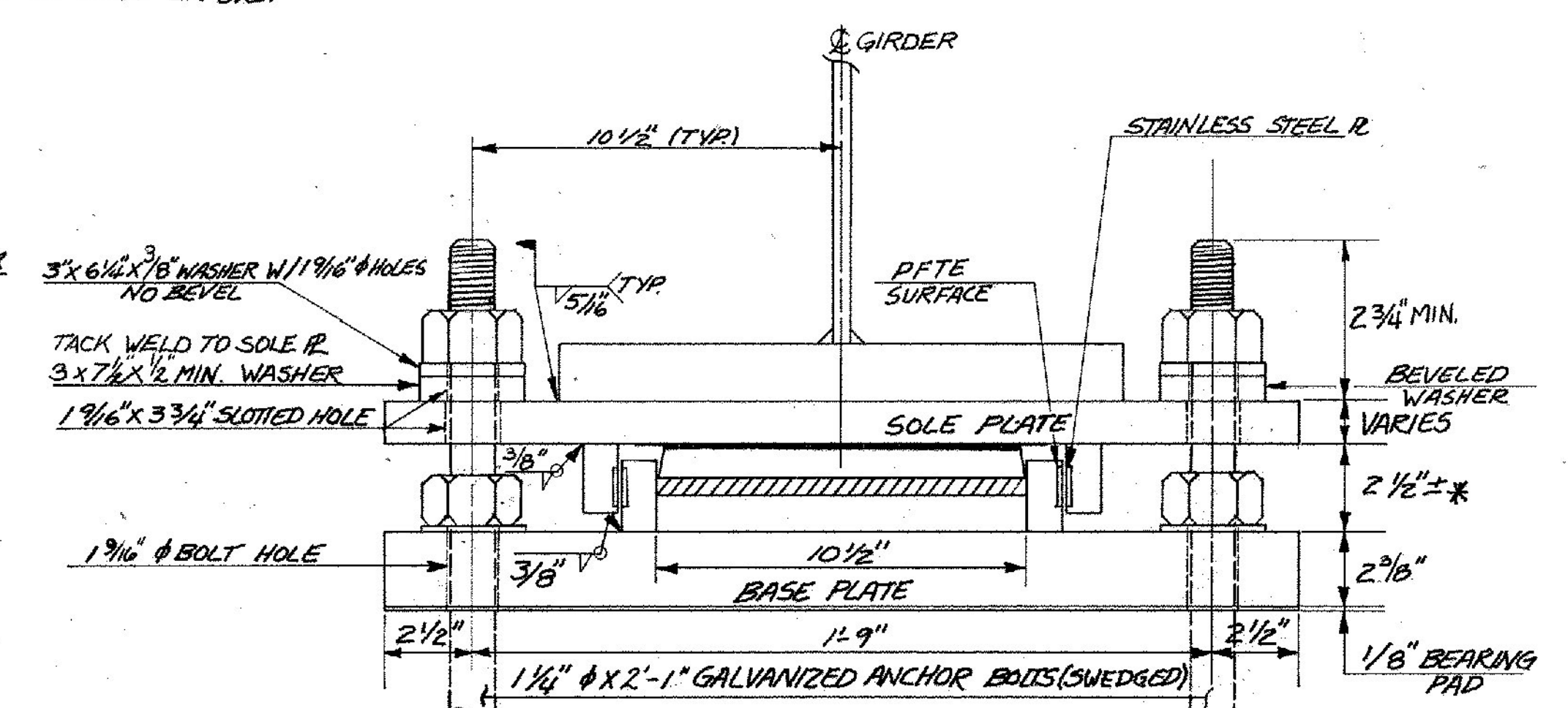


PLAN
SCALE: 3"=1'-0"

NOTE: STEEL IN FIXED BEARING SHALL BE A588.

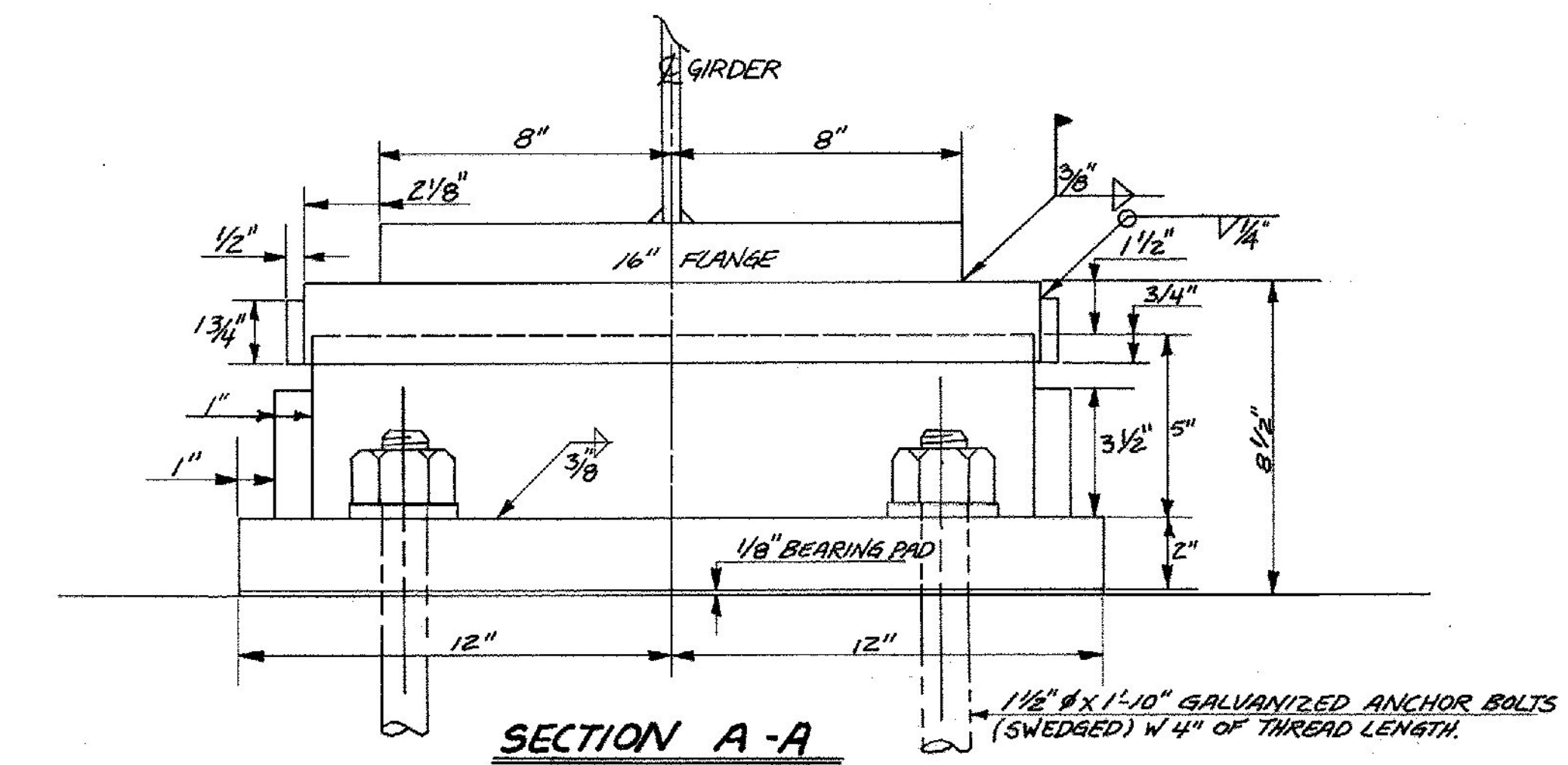


SECTION A-A
SCALE: 3"=1'-0"



SECTION A-A
SCALE: 3"=1'-0"

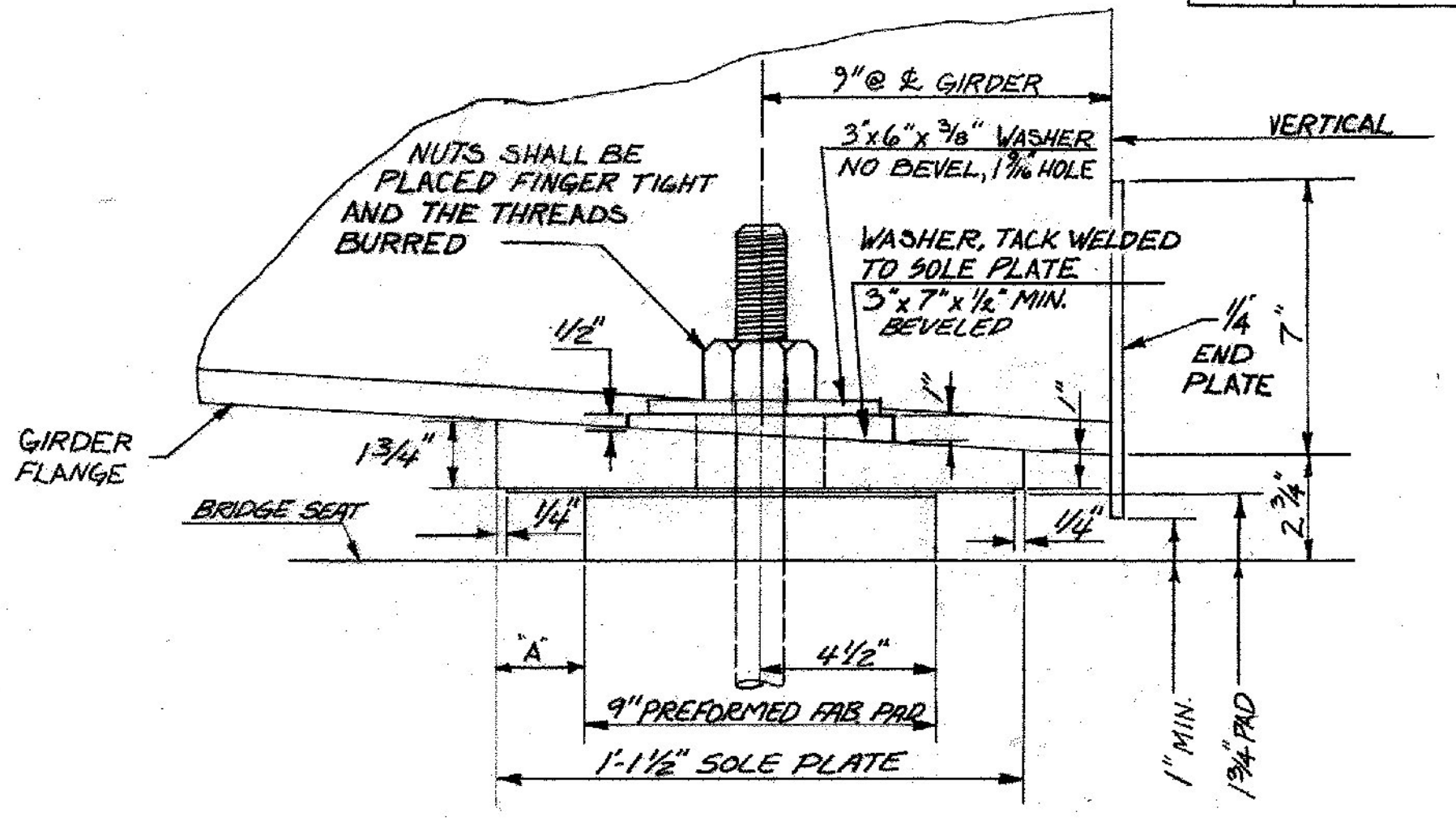
IN LIEU OF BEVELED WASHERS, THE FABRICATOR HAS THE OPTION OF MILLING THE SOLE PLATES SUCH THAT THEY ARE BEVELED FOR WIDTH OF FLANGE + 1" EACH SIDE WITH THE REMAINDER BEING FULL THICKNESS UNDER FLAT WASHERS & NUTS.



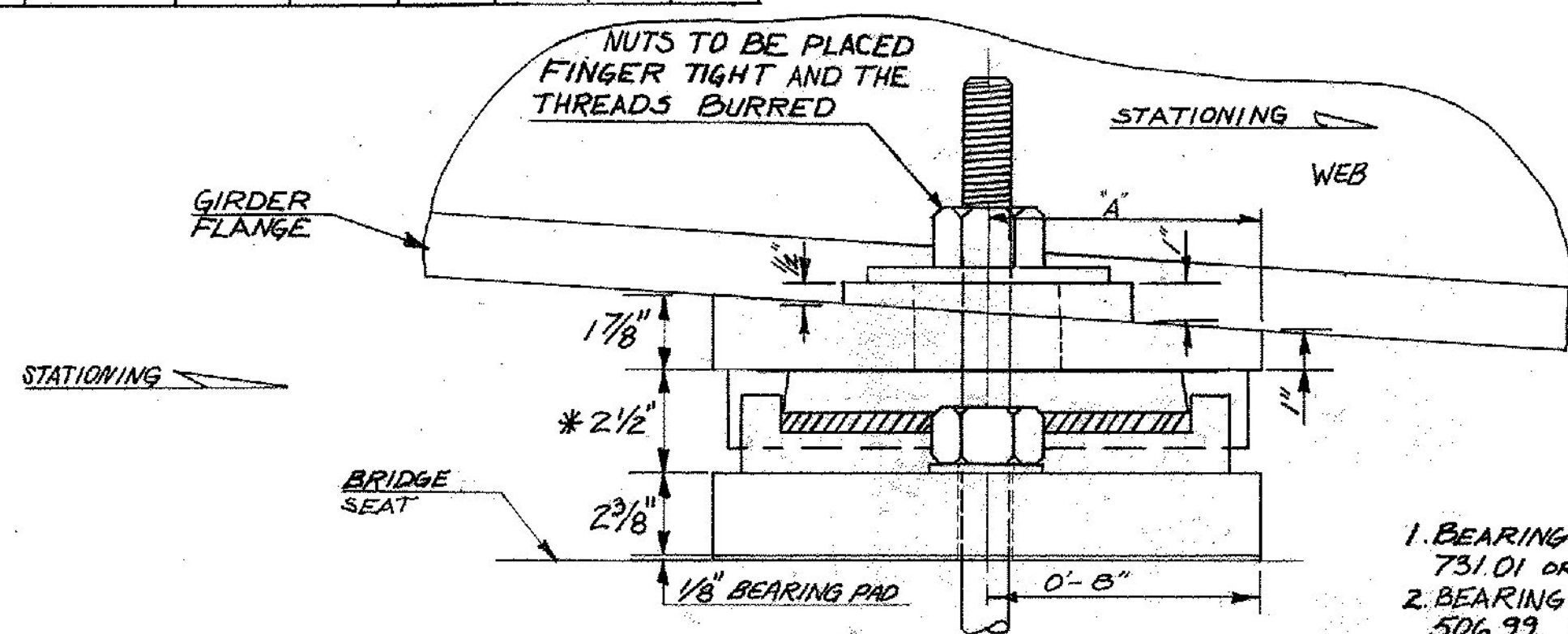
SECTION A-A
SCALE: 3"=1'-0"

SETTING DIMENSIONS FOR EXPANSION BEARINGS

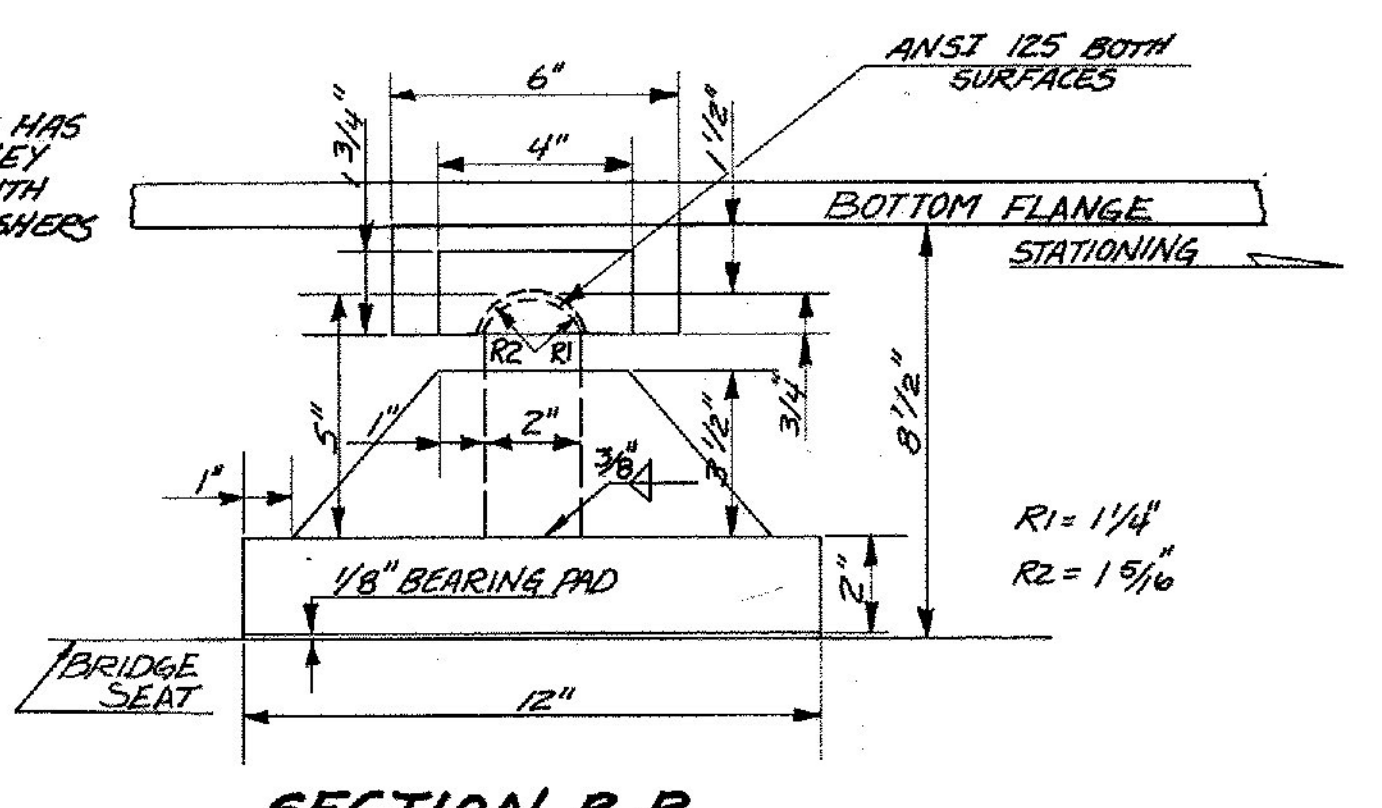
TEMP	ABUT. #1 & #2	PIER #3	ABUT. #1 & #2	PIER #3	ABUT. #1 & #2	PIER #3
15°	2 3/8"	8 1/4"	0	1/8"	2 3/8"	8 1/4"
30°	2 3/8"	8 1/8"	0	1/8"	2 3/8"	7 7/8"
45°	2 3/8"	8"	0	1/8"	2 3/8"	7 3/4"
60°	2 3/8"	7 7/8"	0	1/8"	2 3/8"	7 1/2"
75°	2 3/8"	7 3/4"	0	1/8"	2 3/8"	7 1/4"
90°	2 3/8"	7 1/2"	0	1/8"	2 3/8"	7 1/8"
105°	2 3/8"	7 1/4"	0	1/8"	2 3/8"	7 1/4"



SECTION B-B
SCALE: 3"=1'-0"
ABUTMENTS #2 & #4



SECTION B-B
SCALE: 3"=1'-0"
PIERS #1 & #3



SECTION B-B
SCALE: 3"=1'-0"
PIERS #2 & #4

- NOTES (PIERS #1 & #3 ONLY)**
- BEARING BASE PLATES SHALL BE PLACED ON A 1/8" FABRIC PAD AS SPECIFIED IN SECTION 731.01 OR 731.02.
 - BEARING DEVICES SHALL BE PAID FOR AT THE UNIT BID PRICE EACH FOR ITEM 506.99, BEARING DEVICE ASSEMBLY.
 - DESIGN CRITERIA: A-UNFILLED T.F.E. BEARING SURFACE BEARING PRESSURE: 3500 PSI. B-BASE PLATE TO CONCRETE BEAM SEAT BEARING PRESSURE: 1000 PSI. C-ROTATION CAPACITY: 0.015 RADIAN (MINIMUM).
 - THE MANUFACTURER OF THE BEARING DEVICE ASSEMBLY ITEM 506.99 SHALL, IN ADDITION TO THE TYPE D CERTIFICATION REQUIRED IN SECTION 731.10, CERTIFY THAT THE UNITS SUPPLIED ARE DESIGNED TO MEET THE LOADING REQUIREMENTS INDICATED BELOW:
- EXPANSION**
- VERTICAL 287 KIIPS
LONGITUDINAL 11 KIIPS
TRANSVERSE 6 KIIPS

STATE OF VERMONT
AGENCY OF TRANSPORTATION

TOWN OF **RUTLAND** Bridge No. **5**
Log Sta. **10**

HIGHWAY NO. **U.S. RTE. #4** Surv. Sta. **12 237+25**
U.S. RTE. #4 OVER DORR DRIVE
BEARING DEVICE DETAILS

Designed by **J.B. McCARTHY** Drawn by **L.C. GATES**
Checked by **J.B. McCARTHY** Bridge Design Supervisor
date **8/83** F.W. Balkum date **12/83**

PROJECT **WEST RUTLAND-RUTLAND** PROJECT NO. **F-EGC-F-020-110**
Bridge Sheet No. **BR 511** Sheet **101** of **459**