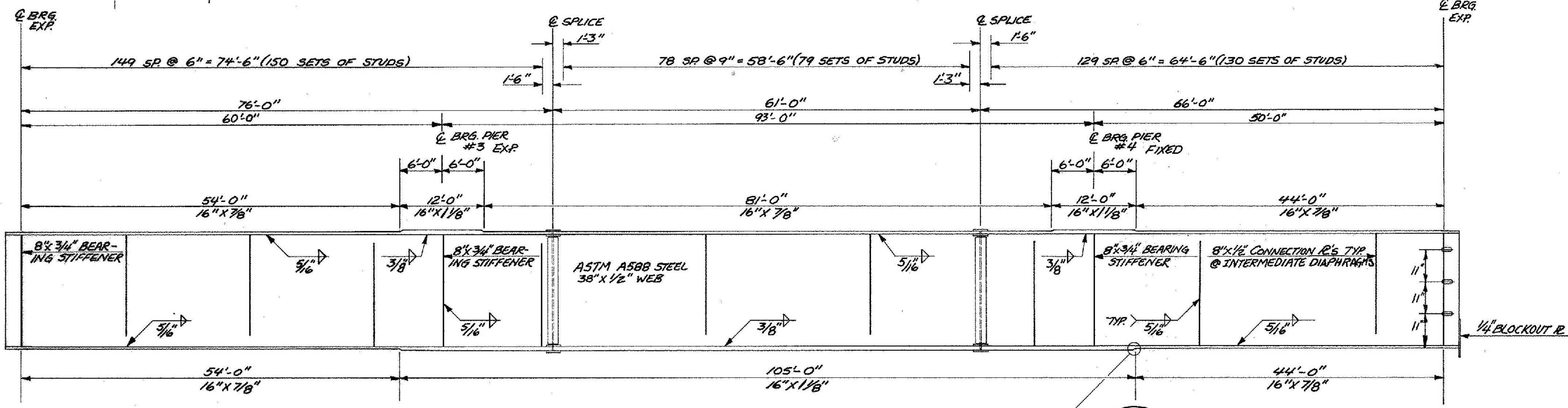
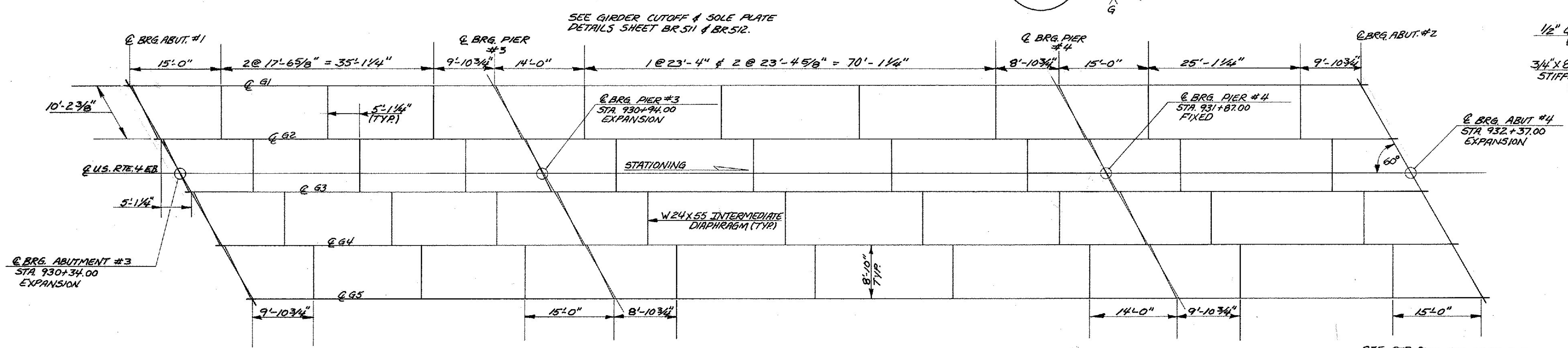


TYPICAL BRIDGE SECTION
SCALE: 1/2" = 1'-0"

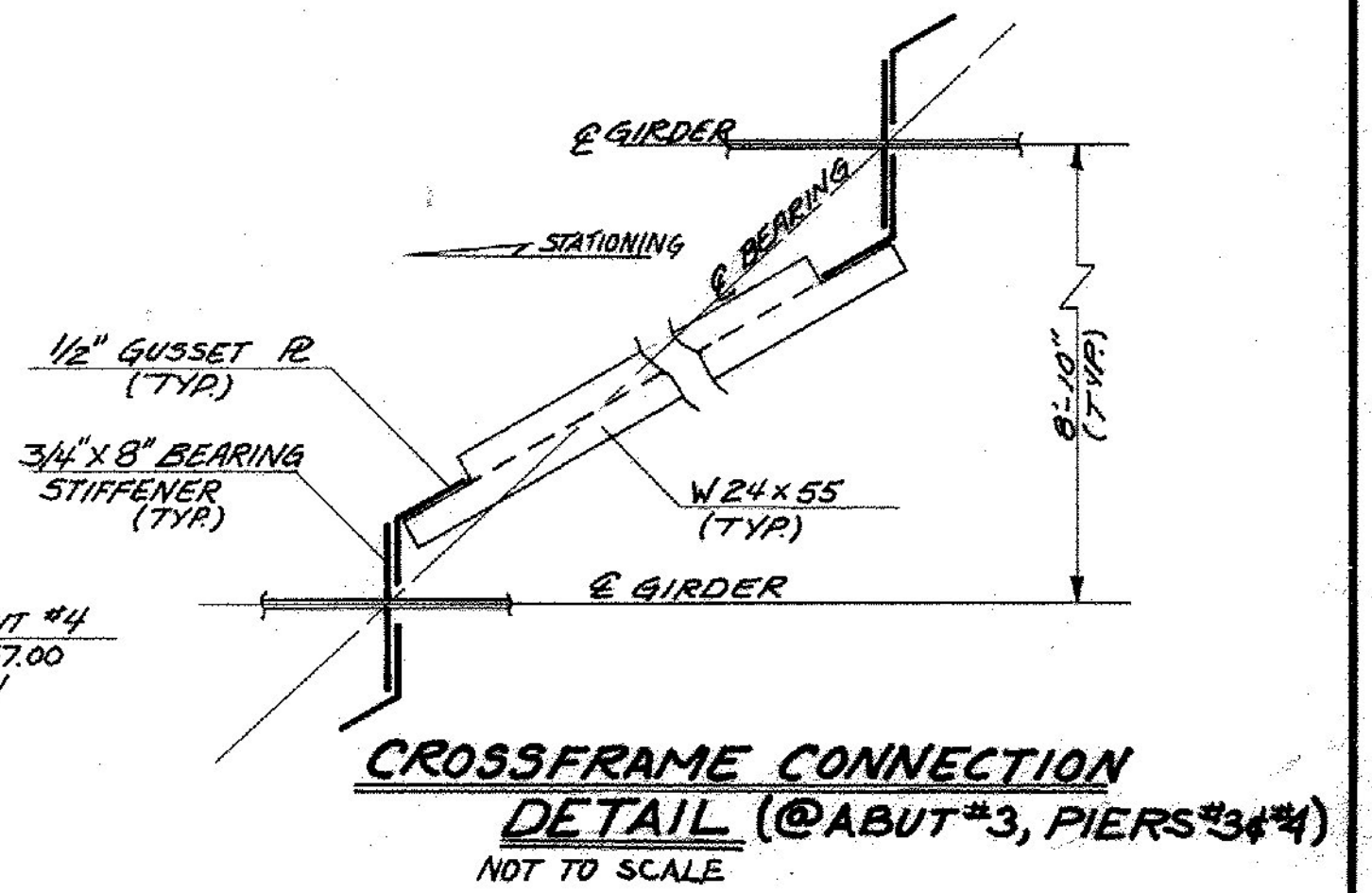
- NOTES**
- CUT THE ENDS OF THE GIRDERS TO BE VERTICAL IN THE ERECTED POSITION.
 - CAMBER TOLERANCE AT ANY POINT SHALL NOT EXCEED (-0) OR +1/8 (DISTANCE TO NEAREST SUPPORT) / 10



TYPICAL GIRDER ELEVATION
SCALE: HORIZ. 1" = 10'-0"
VERT. 1/2" = 1'-0"



EASTBOUND FRAMING PLAN
SCALE: 1" = 10'-0"



CROSSFRAME CONNECTION DETAIL (@ ABUT. #3, PIERS #3 & #4)
NOT TO SCALE

STATE OF VERMONT	
AGENCY OF TRANSPORTATION	
TOWN OF RUTLAND	Bridge No. 5
HIGHWAY NO. U.S. RTE. 4 E.B.	Log Sta. _____
	Surv. Sta. 931+35
U.S. RTE. 4 EB. OVER DORR DRIVE	
SUPERSTRUCTURE DETAILS	
Designed by J.B. MCCARTHY	Drawn by L.C. GATES
Checked by G.S. ROGERS	Bridge Design Supervisor
date 8/11/83	F.W. Bolcum date 12/83
PROJECT WEST RUTLAND-RUTLAND	PROJECT NO. F-EGC-F-020-110
Bridge Sheet No. BR 507	Sheet 97 of 459

BR-5