

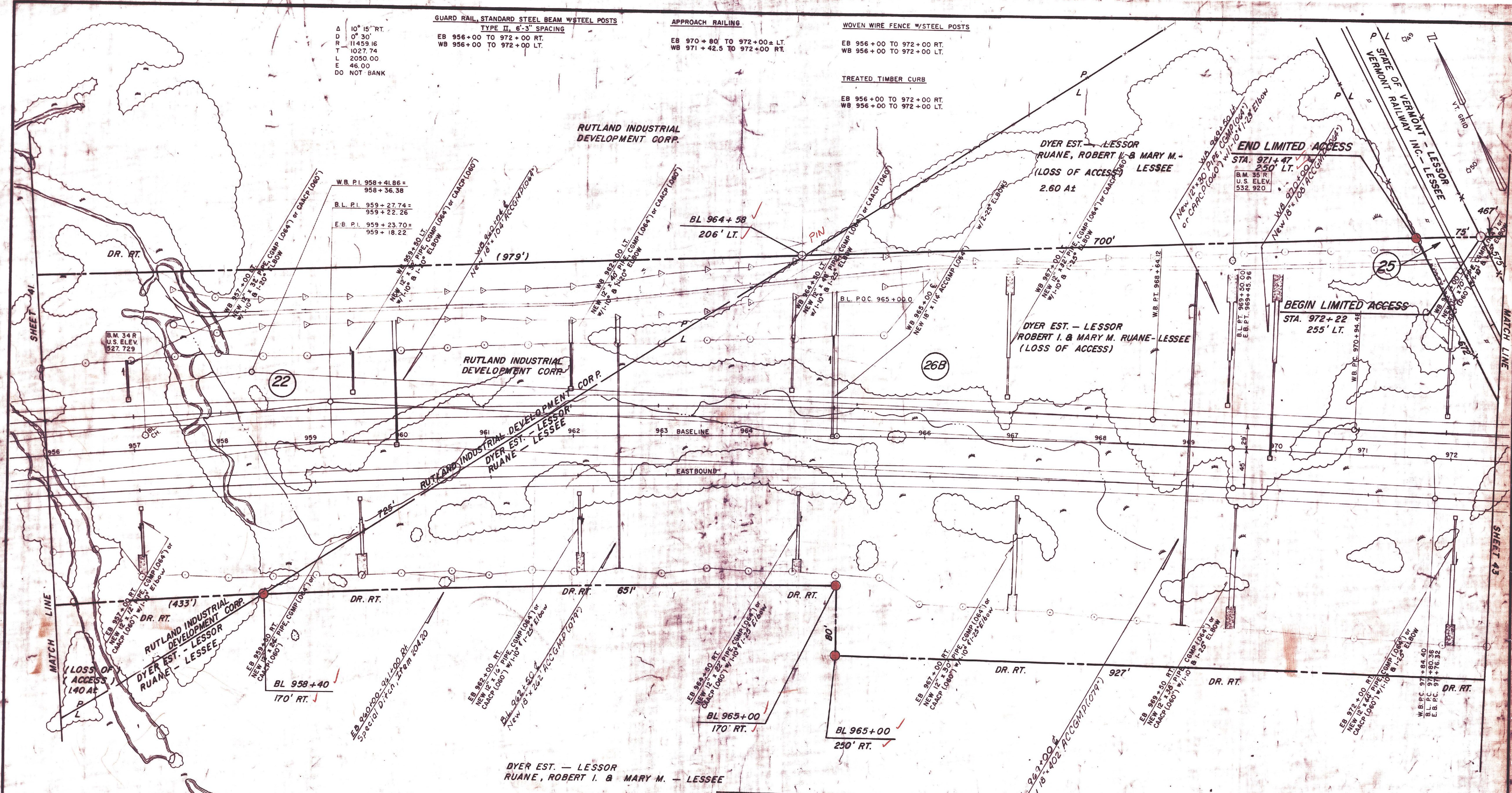
Δ 10° 15' RT.
 D 0° 30'
 R 11459.16
 T 1027.74
 L 2050.00
 E 46.00
 DO NOT BANK

GUARD RAIL, STANDARD STEEL BEAM W/STEEL POSTS
 TYPE II, 6'-3" SPACING
 EB 956+00 TO 972+00 RT.
 WB 956+00 TO 972+00 LT.

APPROACH RAILING
 EB 970+80 TO 972+00± LT.
 WB 971+42.5 TO 972+00 RT.

WOVEN WIRE FENCE W/STEEL POSTS
 EB 956+00 TO 972+00 RT.
 WB 956+00 TO 972+00 LT.

TREATED TIMBER CURB
 EB 956+00 TO 972+00 RT.
 WB 956+00 TO 972+00 LT.



COUNTERWEIGHT BERM
 E.B. 956+75 - 972+00 RT.
 W.B. 965+84 - 972+00 LT.

UNCLASSIFIED CHANNEL EXCAV., Item 203.17
 WB 957+50 - 971+00 LT.

**THIS SHEET TO BE USED
FOR ROW INFORMATION ONLY**

ROW PLANS

WEST RUTLAND - RUTLAND

SURVEYED BY: FALL DATE: JUNE '76
 DRAWN BY: DZG DATE: JULY '75
 TRACED BY: DZG DATE: JULY '75

PROJ. F NO. Q20-1(11)
 ROW SHEET 42
 SHEET 46 OF 459