

WOVEN WIRE FENCE  
 EB 908+00 - 924+00 Rt.  
 WB 908+00 - 924+00 Lt.  
**THIS SHEET TO BE USED  
 FOR ROW INFORMATION ONLY**

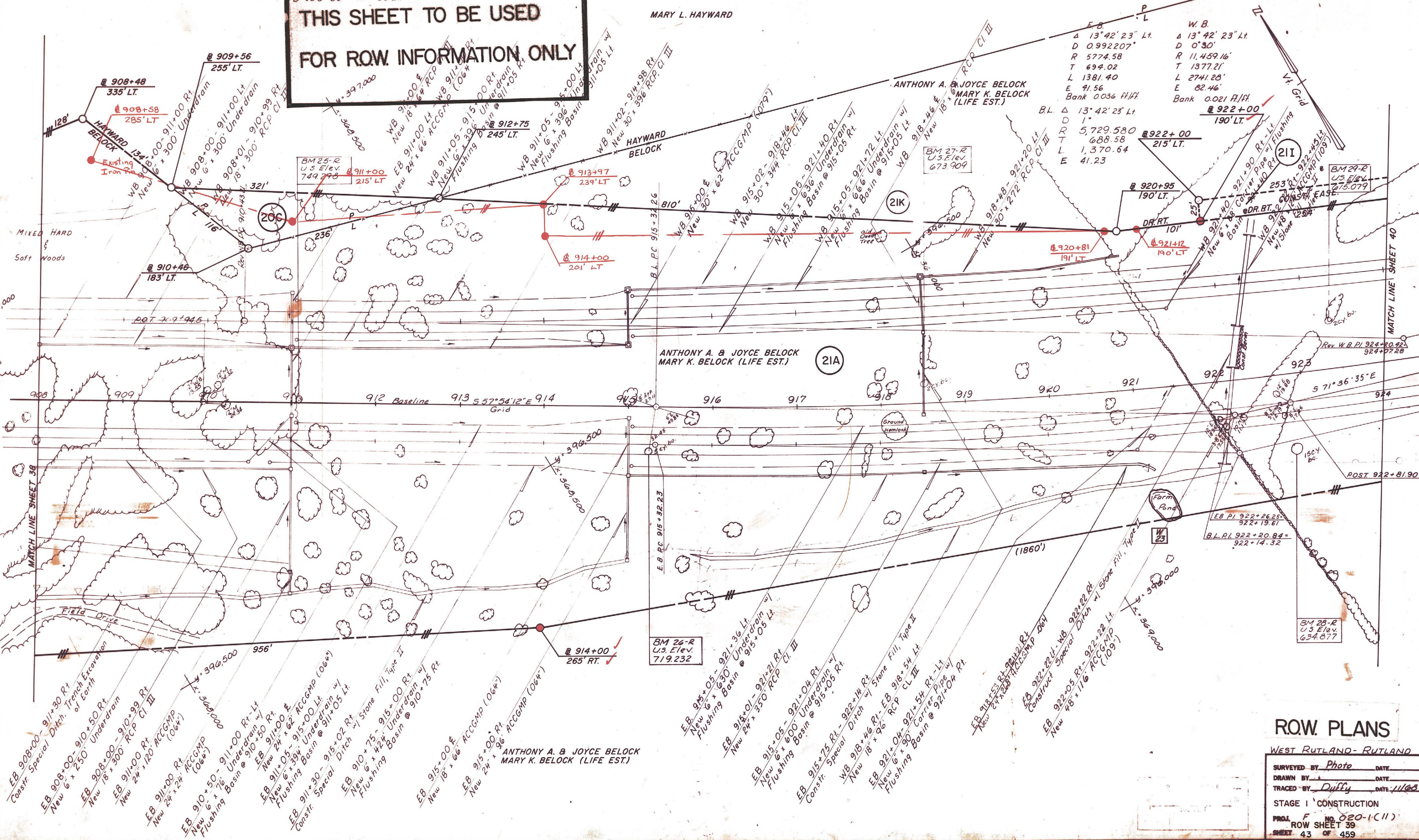
MARY L. HAYWARD

SAND BORROW  
 EB 908+00 - 921+25  
 WB 908+00 - 921+40

SLOPE BENCHING  
 EB 908+00 - 911+00 Rt.  
 WB 908+00 - 909+35 Lt.

\* GUARD RAIL, STD. STEEL BEAM w/  
 STEEL POSTS, 6'-3" SPACING  
 WB 922+00 - 924+00 Lt.

\* TREATED TIMBER CURB  
 WB 922+40 - 924+00 Lt.



E.B.		W.B.	
Δ	13° 42' 23" Lt.	Δ	13° 42' 23" Lt.
D	0.992207	D	0° 30'
R	5774.58	R	11,459.16'
T	694.02	T	1377.21'
L	1381.40	L	2741.28'
E	41.56	E	82.46'
Bank 0.036 H/Ft		Bank 0.021 H/Ft	
B.L. Δ 13° 42' 23" Lt			
D	1'		
R	5,729.580		
T	688.58		
L	1,370.64		
E	41.23		

**ROW PLANS**

WEST RUTLAND - RUTLAND

SURVEYED BY Photo DATE \_\_\_\_\_

DRAWN BY \_\_\_\_\_ DATE \_\_\_\_\_

TRACED BY Duffy DATE 1/16/68

STAGE I CONSTRUCTION

PROJ. F NO. 020-1(11)

ROW SHEET 39

SHEET 43 OF 459