

SETTLEMENT PLATFORM, TYPE II

960+00 E
965+00 E
970+00 E

* GUARD RAIL, THREE CABLE
w/ LIGHT STEEL POSTS

EB 956+00-969+91.5 Rt.
WB 956+00-970+74 Lt.

* TREATED TIMBER CURB

EB 956+00-971+70 Rt.
WB 956+00-971+40 Lt.

* APPROACH RAILING

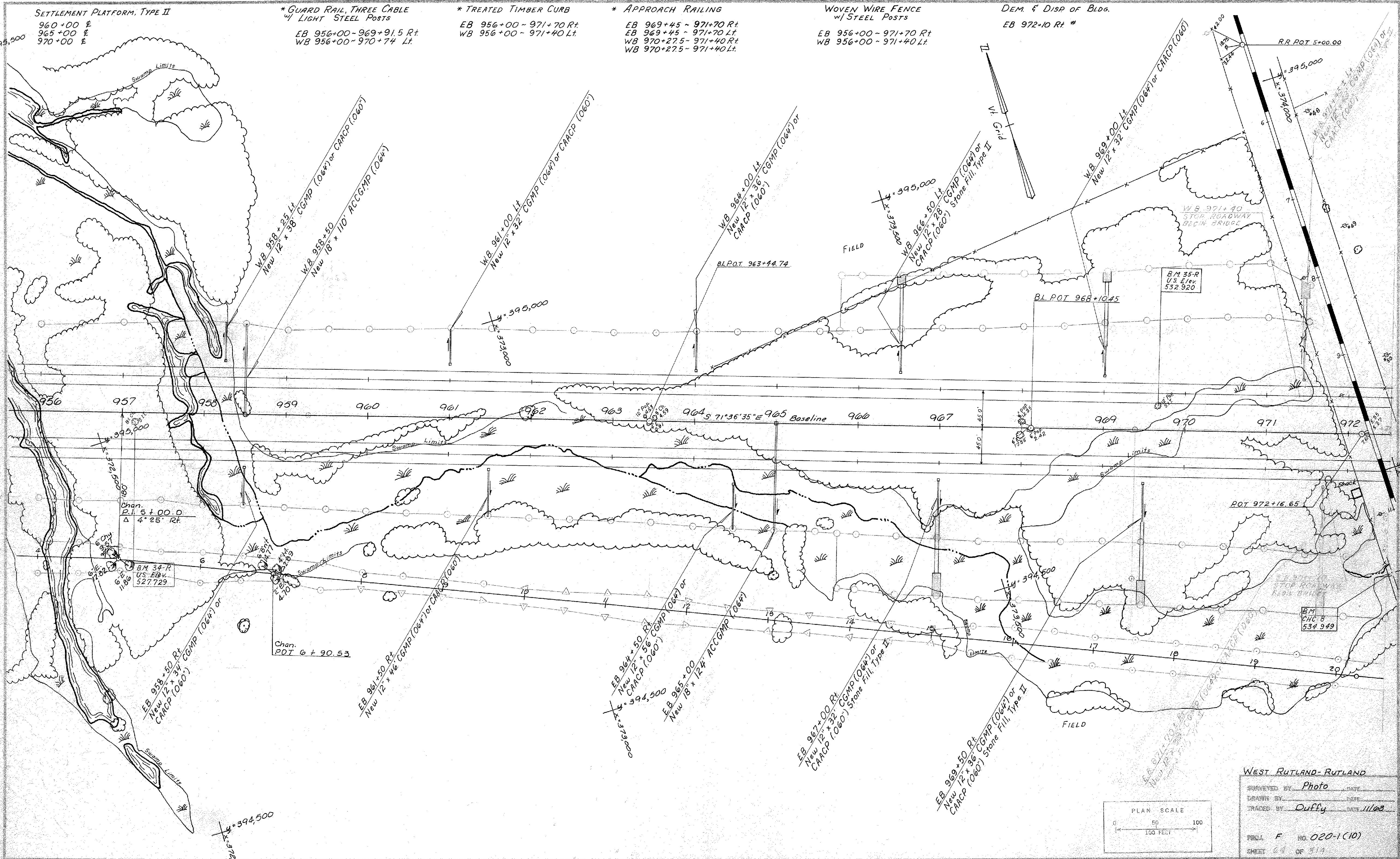
EB 969+45-971+70 Rt.
EB 969+45-971+70 Lt.
WB 970+275-971+40 Rt.
WB 970+275-971+40 Lt.

WOVEN WIRE FENCE
w/ STEEL POSTS

EB 956+00-971+70 Rt.
WB 956+00-971+40 Lt.

DEM. & DISP OF BLDG.

EB 972+10 Rt. #



WEST RUTLAND-RUTLAND
 SUBMITTED BY: Photo
 DRAWN BY: Duffy
 TRACED BY: Duffy
 PROJ. F NO. 020-1(10)
 SHEET 24 OF 314

