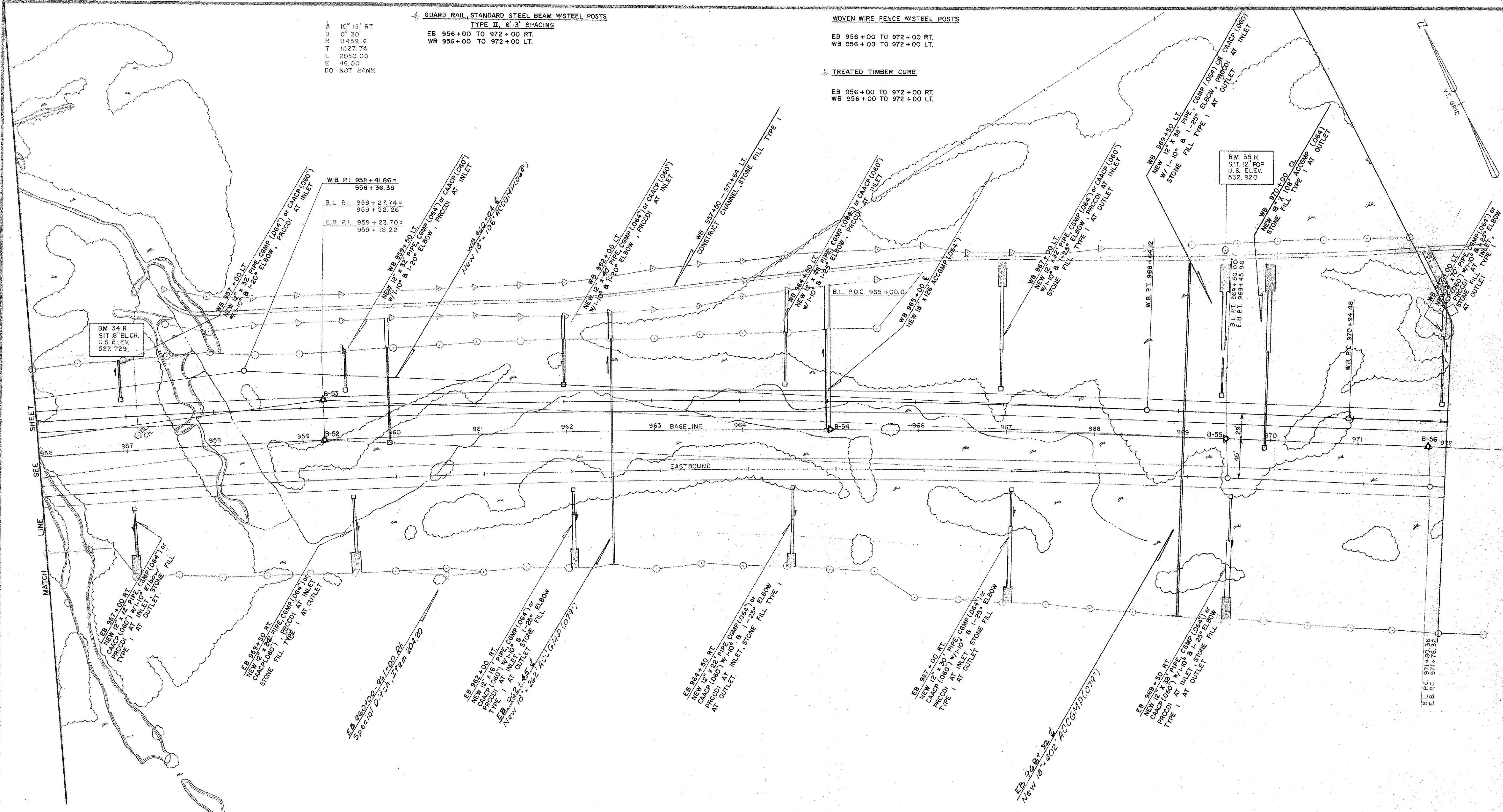


Δ 10° 15' RT.
 D 0° 30'
 R 11459.6
 T 1027.74
 L 2050.00
 E 46.00
 DO NOT BANK

* GUARD RAIL, STANDARD STEEL BEAM W/STEEL POSTS
 TYPE II, 6'-3" SPACING
 EB 956+00 TO 972+00 RT.
 WB 956+00 TO 972+00 LT.

WOVEN WIRE FENCE W/STEEL POSTS
 EB 956+00 TO 972+00 RT.
 WB 956+00 TO 972+00 LT.

* TREATED TIMBER CURB
 EB 956+00 TO 972+00 RT.
 WB 956+00 TO 972+00 LT.



B.M. 35 R
 SIT. IN POP
 U.S. ELEV.
 532.920

B.M. 34 R
 SIT. IN BLCH.
 U.S. ELEV.
 527.729

COUNTERWEIGHT BERM
 E.B. 956+75 - 972+00 RT.
 W.B. 965+84 - 972+00 LT.

UNCLASSIFIED CHANNEL EXCAV., Item 203.27
 WB 957+50 - 971+64 LT.

STONE FILL, Item 613.10, Type I
 W.B. 957+50 - 971+64 LT.

SETTLEMENT PLATFORM, Type II
 ITEM 623.22
 B.L. 960+00 &
 B.L. 965+00 &
 B.L. 970+00 &

956+00 - 972+00
 WEST RUTLAND - RUTLAND

SURVEYED BY FALL DATE JUNE '75
 DRAWN BY D.Z.G. DATE JULY '75
 TRACED BY D.Z.G. DATE JULY '75

STAGE I CONSTRUCTION
 PROJ. F NO. 020-1(10)
 SHEET OF

