

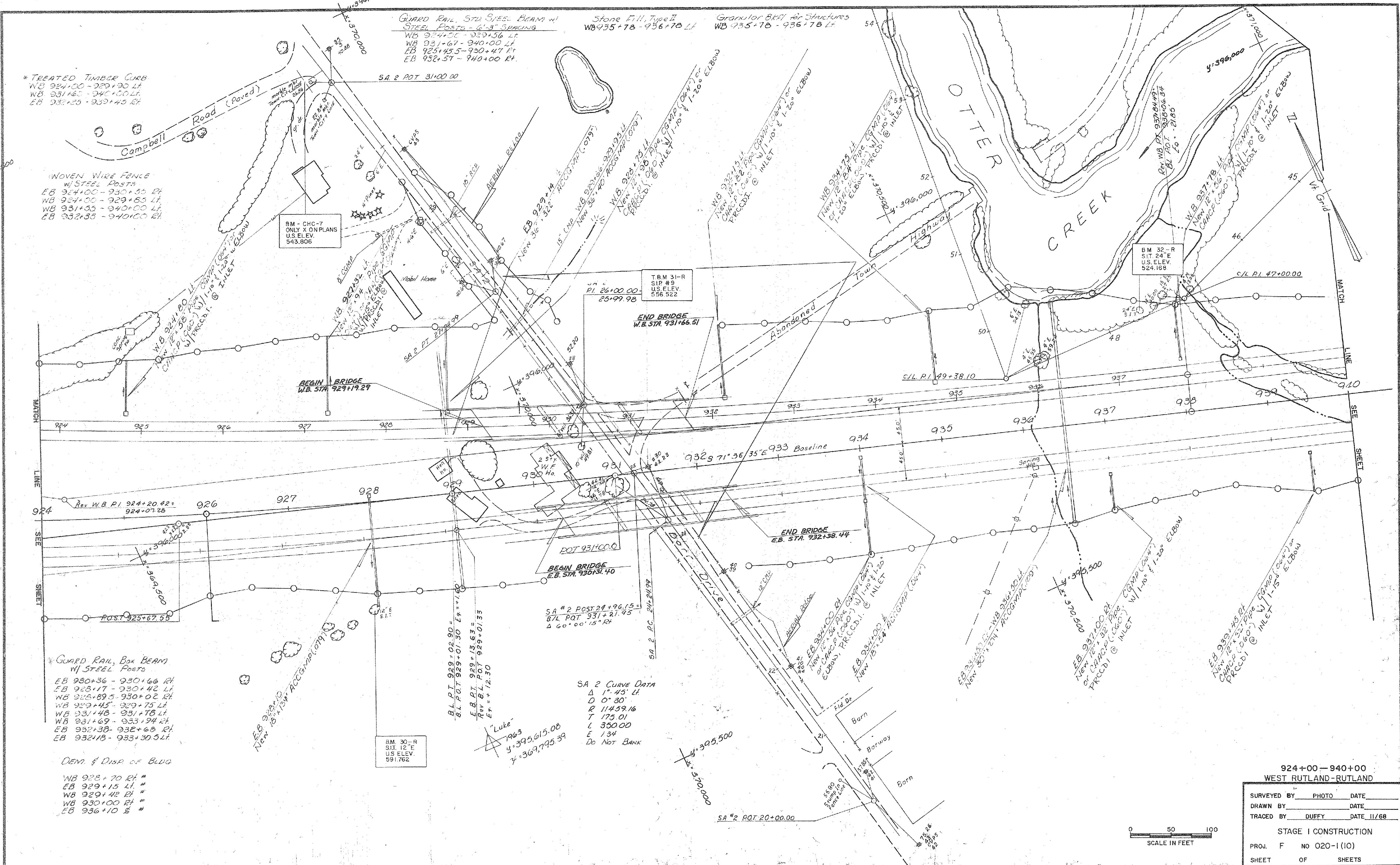
GUARD RAIL, STA STEEL BEAM w/
 STEEL POSTS - 6'-3" SPACING
 Stone Fill, Type II
 Granular Bkfl for Structures

* TREATED TIMBER CURB
 WB 924+00 - 929+90 LF
 WB 931+63 - 940+00 LF
 EB 932+25 - 933+45 RF

WOVEN WIRE FENCE
 w/ STEEL POSTS
 EB 924+00 - 930+55 RF
 WB 924+00 - 929+65 LF
 WB 931+35 - 940+00 LF
 EB 932+35 - 940+00 RF

GUARD RAIL, Box BEAM
 w/ STEEL POSTS
 EB 930+36 - 930+66 RF
 EB 928+17 - 930+42 LF
 WB 928+89 - 930+02 LF
 WB 929+45 - 929+75 LF
 WB 931+48 - 931+78 LF
 WB 931+69 - 933+94 LF
 EB 932+38 - 932+68 RF
 EB 932+18 - 933+30 LF

DEM. & DISP. OF BLDG
 WB 928+70 RF
 EB 929+15 LF
 WB 929+48 RF
 WB 930+00 RF
 EB 936+10 RF



924+00 - 940+00
 WEST RUTLAND - RUTLAND

SURVEYED BY	PHOTO	DATE
DRAWN BY		DATE
TRACED BY	DUFFY	DATE 11/68

STAGE I CONSTRUCTION
 PROJ. F NO 020-1 (10)
 SHEET OF SHEETS

