

WOVEN WIRE FENCE
w/ STEEL POSTS
EB 908+00 - 924+00 Rt.
WB 908+00 - 924+00 Lt.

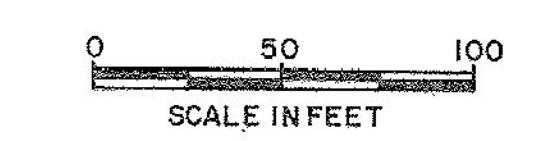
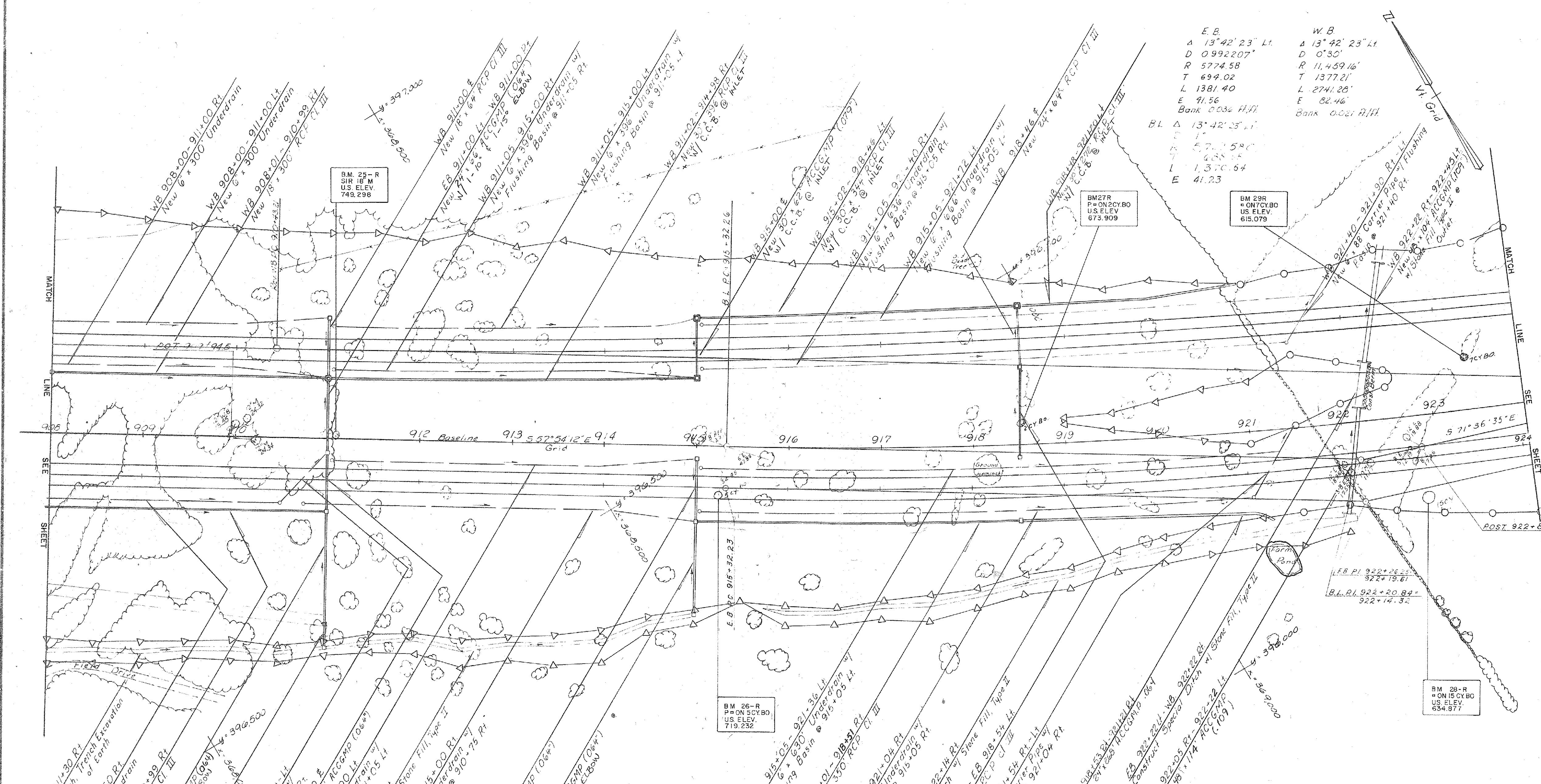
SAND BORROW
EB 908+00 - 921-25
WB 908+00 - 921+40

SLOPE BENCHING
EB 908+00 - 911+00 Rt.
WB 908+00 - 909+35 Lt.

* GUARD RAIL, STD STEEL BEAM w/
STEEL POSTS, 6'-3" SPACING
WB 922+ - 924+00 Lt.

* TREATED TIMBER CURB
WB 922+40 - 924+00 Lt.

E.B.		W.B.	
Δ	13° 42' 23" Lt.	Δ	13° 42' 23" Lt.
D	0.992207'	D	0' 30"
R	5774.58	R	11,459.16'
T	699.02	T	1377.21'
L	1381.40	L	2741.28'
E	91.56	E	82.46
Bank 0.034 A/H		Bank 0.021 A/H	
BL Δ 13° 42' 25" Lt.			
L	57.2580		
T	488.25		
L	1,370.64		
E	41.23		



908+00 - 924+00
WEST RUTLAND - RUTLAND

SURVEYED BY Photo DATE _____
DRAWN BY _____ DATE _____
TRACED BY Duffy DATE 11/68

STAGE I CONSTRUCTION
PROJ. F NO. 020-1(10)
SHEET OF SHEETS