

WOVEN WIRE FENCE
w/ STEEL POSTS
EB 908+00 - 924+00 Rt.
WB 908+00 - 924+00 Lt.

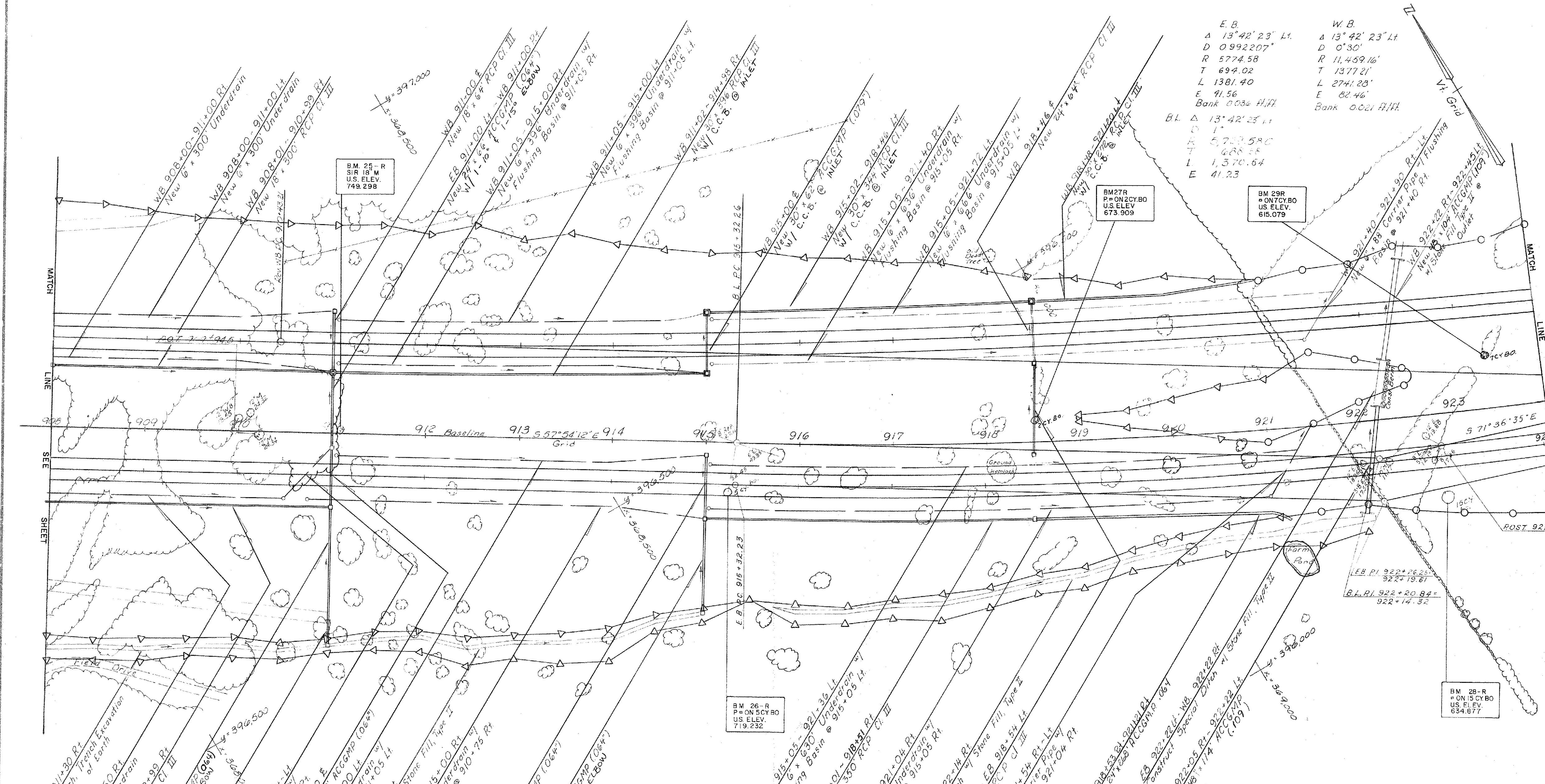
SAND BORROW
EB 908+00 - 921+25
WB 908+00 - 921+40

SLOPE BENCHING
EB 908+00 - 911+00 Rt.
WB 908+00 - 909+35 Lt.

* GUARD RAIL, STD STEEL BEAM w/
STEEL POSTS, 6'-3" SPACING
WB 922+ - 924+00 Lt.

* TREATED TIMBER CURB
WB 922+40 - 924+00 Lt.

E.B.		W.B.	
Δ	13° 42' 23" Lt.	Δ	13° 42' 23" Lt.
D	0.992207'	D	0° 30'
R	5774.58	R	11,459.16'
T	694.02	T	1377.21'
L	1381.40	L	2741.20'
E	91.56	E	82.46'
Bank 0.03% A/H/H		Bank 0.02% A/H/H	
Vt. Grid			
B.L. Δ 13° 42' 23" Lt.			
D 1'			
R 5,752.580			
T 688.58			
L 1,370.64			
E 41.23			



908+00 — 924+00
WEST RUTLAND — RUTLAND

SURVEYED BY: Photo DATE: _____
 DRAWN BY: _____ DATE: _____
 TRACED BY: Duffy DATE: 11/68

STAGE I CONSTRUCTION
 PROJ. F NO. 020-1 (10)
 SHEET OF SHEETS

