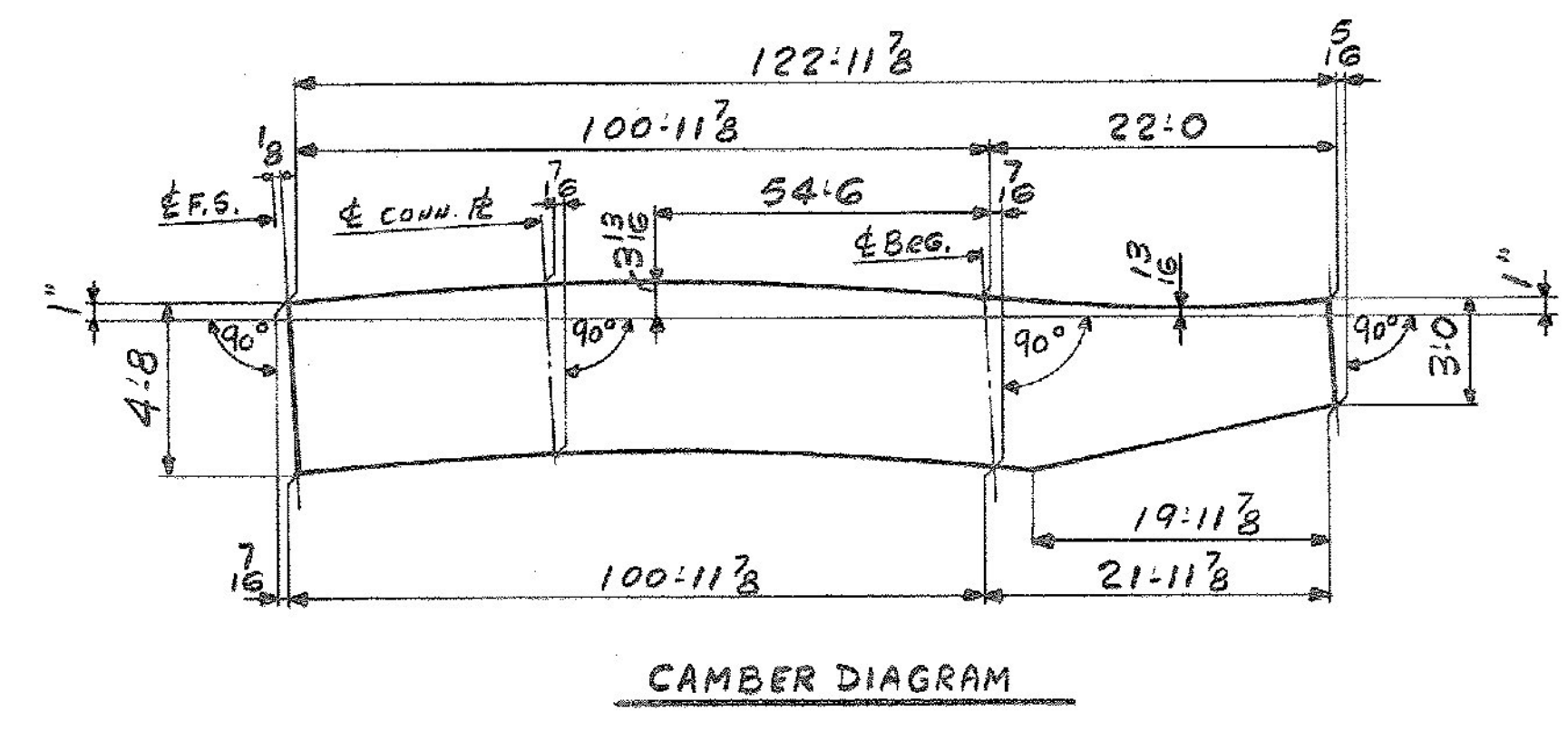
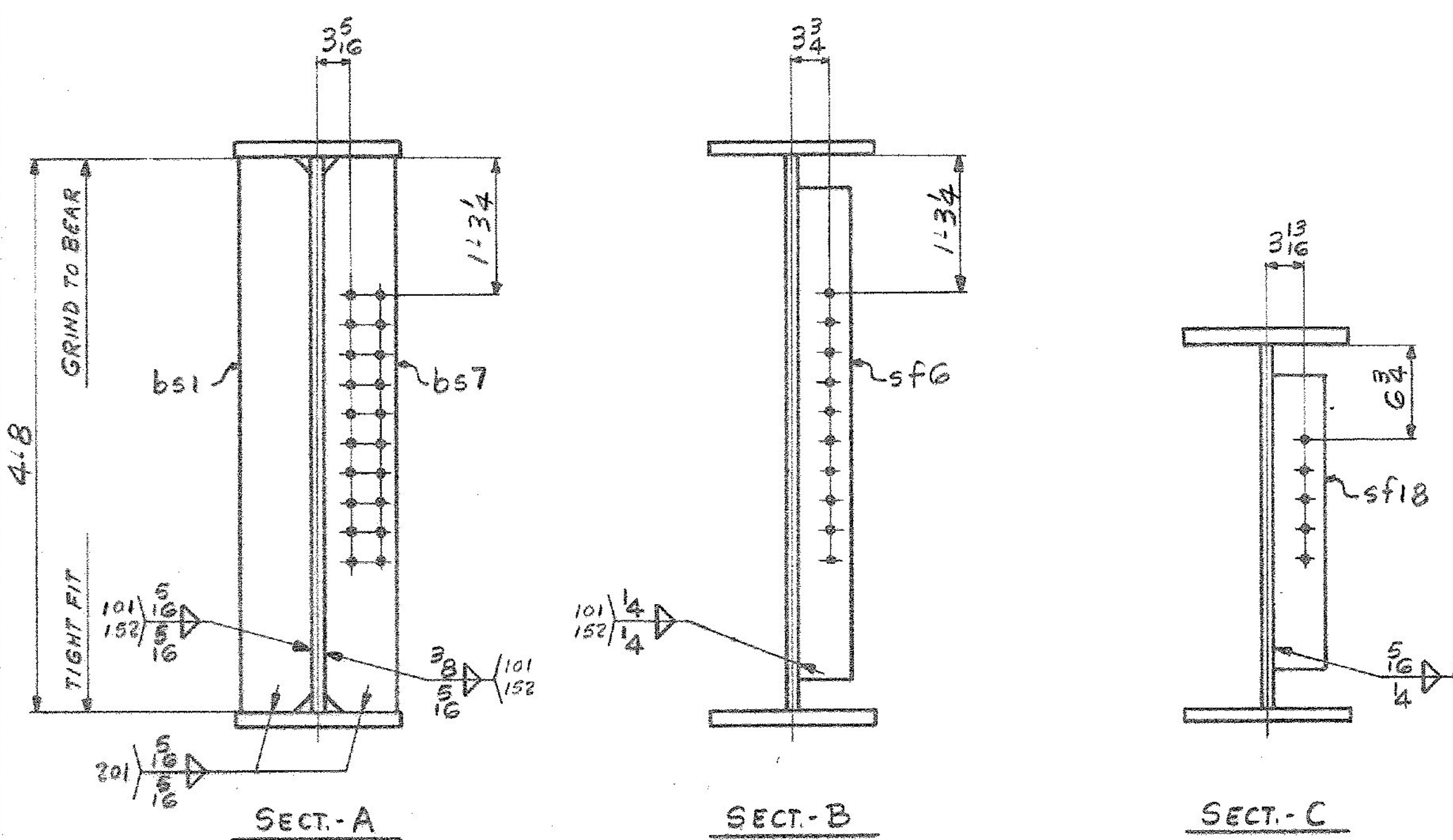
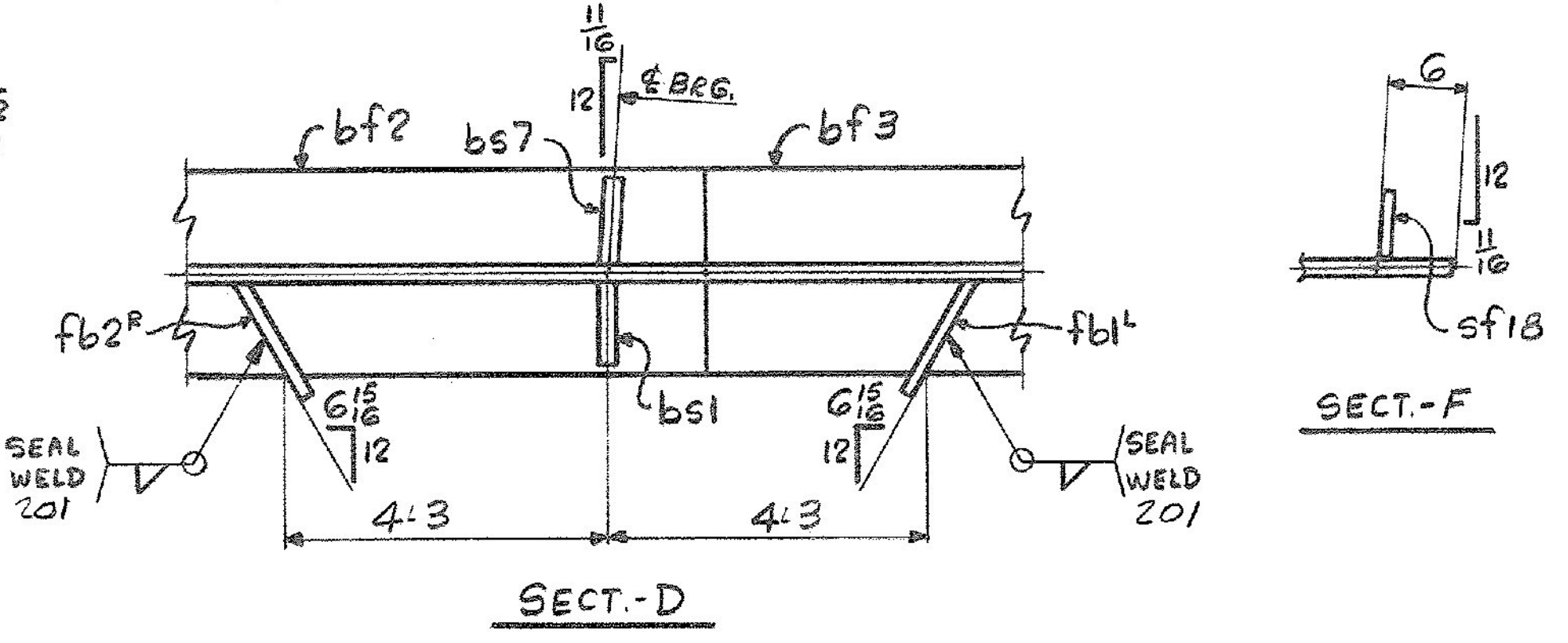


SHIP		BILL OF MATERIAL			JOB NO.	DRAWING NO.	REV.
G12B		1	GIRDER		4-8	52-14	△
MARK	NO.	MARK	SHAPE	LENGTH	WT	REMARKS	
		1	wp1	PL 1/2 x 58	80 11 3/8	1/2 2200 CVN	
		1	wp2	PL 1/2 x 56 3/4	42 0 1/8	1/2 2200 CVN	
		1	tf1	PL 7/8 x 16	81 11 3/8	1/2 3906	
		1	tf2	PL 1 1/2 x 16	41 0	1/2 2511 CVN	
		1	bf1	PL 1 1/2 x 16	81 11 3/8	1/2 5020 CVN	
		1	bf2	PL 1 1/2 x 16	21 0	1/2 1286	
		1	bf3	PL 7/8 x 16	20 0 1/8	1/2 950	
		1	bs1	BAR 7/8 x 1 1/2	4 8	1/2 97	MIE FILE
		1	bs7	BAR 7/8 x 1 1/2	4 8	1/2 97	MIE FILE
		4	sf6	BAR 5 x 3/8	4 2	1/2 177	
		1	sf18	BAR 5 x 3/8	2 6	1/2 27	Min cuts IM 1-9
		1	fb1L	PL 4 x 2 3/8	0 10 1/8	1/2 2	
		1	fb2R	PL 4 x 3 1/8	0 10 1/8	1/2 2	
							26883 #

ONE - GIRDER - G12B
 FOR GIRDER STANDARD DETAILS SEE DWG. 52-2
 FOR WEB CUTTING SK. & FLG. ASSY SEE DWG. 52-1
 FOR SHOP ASSEMBLY DIAGRAM SEE DWG. 52-1

DIM. (X)	
4'-0"	68'-0"
8'-0"	72'-0"
12'-0"	76'-0"
16'-0"	80'-0"
20'-0"	84'-0"
24'-0"	88'-0"
28'-0"	92'-0"
32'-0"	96'-0"
36'-0"	100'-0"
40'-0"	102'-0"
44'-0"	106'-0"
48'-0"	110'-0"
52'-0"	114'-0"
56'-0"	118'-0"
60'-0"	121'-8"
64'-0"	



ALL CONNECTIONS DETAILED ON THIS DRAWING REPRESENT BANCROFT & MARTIN INC. STANDARDS. IN APPROVING THIS DRAWING FOR FABRICATION, THE ARCHITECT AND/OR ENGINEER ASSUMES THE RESPONSIBILITY FOR THE STRUCTURAL INTEGRITY OF ALL CONNECTIONS SHOWN.

IT. NO. 506.91 BR. NO. 1 PROJ. NO. F020-1(10)

FOR APPROVAL | **FOR FILES & FIELD**

STEEL: ASTM. A36 A572 GR A588 GR Unless Noted

WELDING ELECTRODE: E70 See Welding Proc. None

SHOP CONN: Bolted Welded None

FIELD CONN: Bolted Welded None

HOLES: 13/16 15/16 Unless Noted None

PAINT: None Shopcoat Galv. After Fab. As Noted

SPECIAL PAINT: None Blast Clean None SSPC-SP6

GIRDER - G12B

APPROVED: 5-8-89
 PRINT DIST.
 7 3-26-89 APP.
 8 5-10-89 FAB.
 7 4-6-89 FAB.

Bancroft & Martin Inc.
 South Portland, Maine 04106

JOB: U.S. 4 OVER TWO-WAY RAMP
 WEST RUTLAND, RUTLAND, VERMONT

CUSTOMER: M & J CONSTRUCTION CO.
 DESIGNER: STATE OF VERMONT, AGENCY OF TRANSP.

REV. △
 CHECKED 3-20-84 R/W
 DRAWN 2-28-84 ELC

ORDER NO. JOB NO. DRAWING NO. REV.
 4-8 52-14 △

TENSOR 920-08