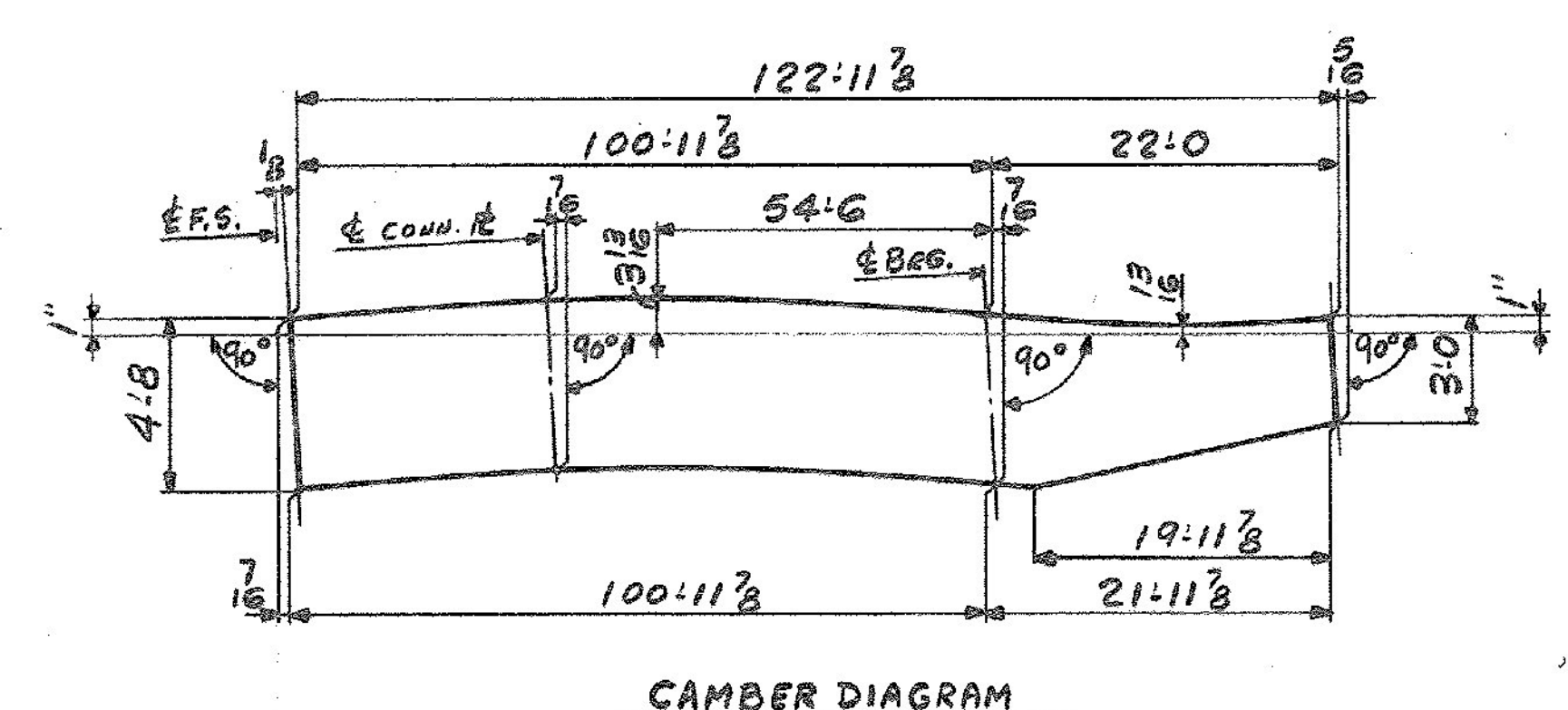
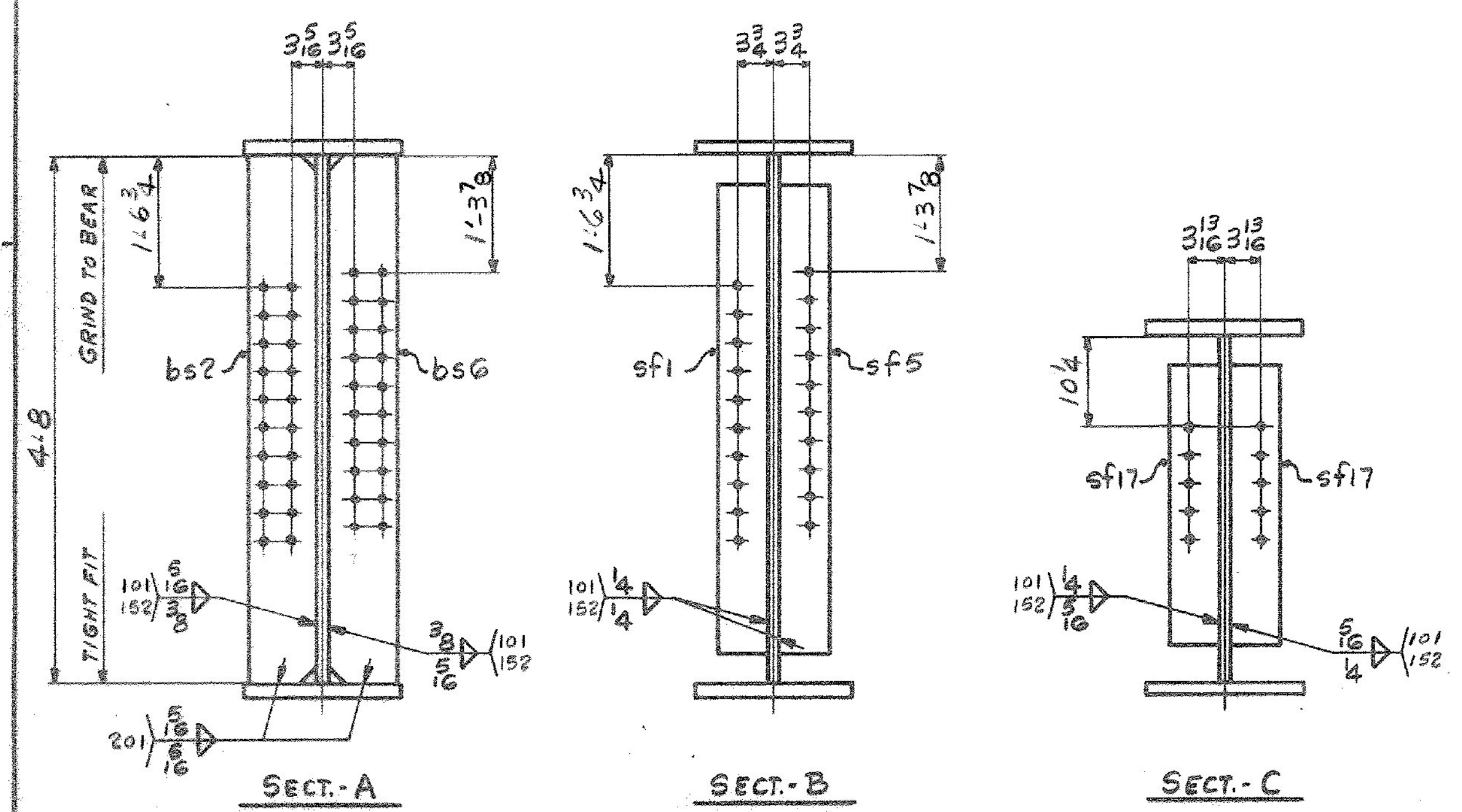
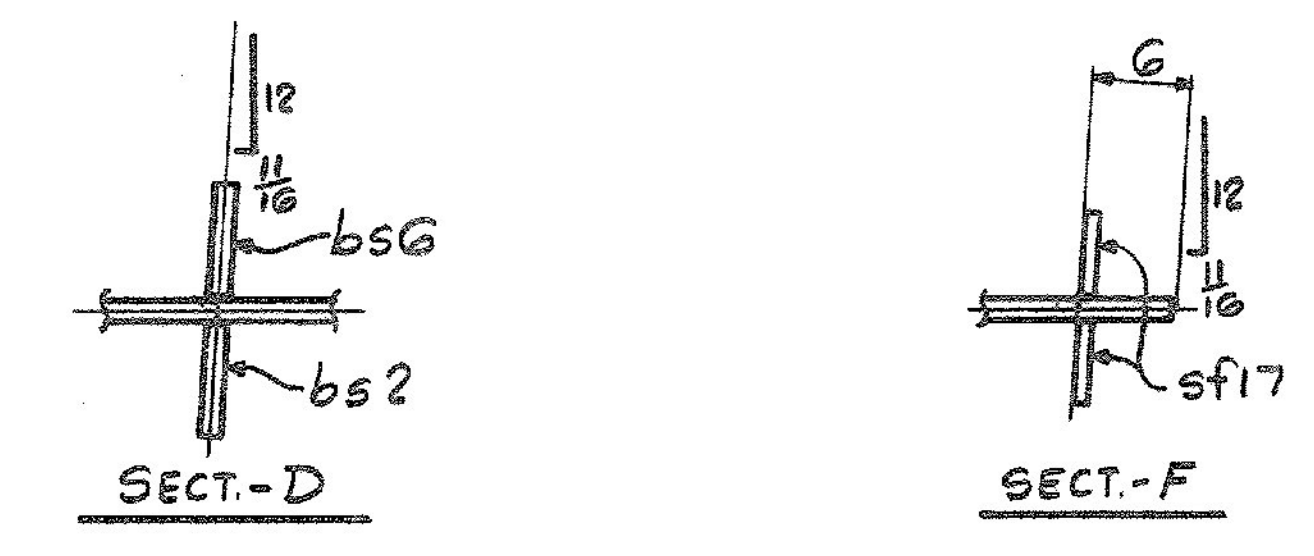


ONE - GIRDER - G11B
 FOR GIRDER STANDARD DETAILS SEE DWG. 52-2
 FOR WEB R CUTTING SK. & FLG. R ASSY SEE DWG. 52-1
 FOR SHOP ASSEMBLY DIAGRAM SEE DWG. 52-1



ALL CONNECTIONS DETAILED ON THIS DRAWING REPRESENT BANCROFT & MARTIN INC. STANDARDS. IN APPROVING THIS DRAWING FOR FABRICATION, THE ARCHITECT AND/OR ENGINEER ASSUMES THE RESPONSIBILITY FOR THE STRUCTURAL INTEGRITY OF ALL CONNECTIONS SHOWN.

SHIP		BILL OF MATERIAL		JOB NO.	DRAWING NO.	REV.
G11B		GIRDER		4-8	52-13	△
MARK	NO.	MARK	SHAPE	LENGTH	WT	REMARKS
	1	wp1	R 9/16 x 58	80 11 3/8	1/8	CVN
	1	wp2	R 1/2 x 56 3/4	42 0 1/8	1/8	CVN
	1	tf1	R 7/8 x 16	81 11 3/8	1/8	CVN
	1	tf2	R 1 1/2 x 16	41 0	1/8	CVN
	1	bf1	R 1 1/2 x 16	81 11 3/8	1/8	CVN
	1	bf2	R 1 1/2 x 16	21 0	1/8	CVN
	1	bf3	R 7/8 x 16	20 0 1/8	1/8	CVN
	1	bs2	BAR 7/8 x 1 1/2	4 8	1/8	97
	1	bs6	BAR 7/8 x 1 1/2	4 8	1/8	97
	4	sf1	BAR 5 x 5/8	4 2	1/8	177
	4	sf5	BAR 5 x 5/8	4 2	1/8	177
	2	sf17	BAR 5 x 5/8	2 6	1/8	53
						27082*

IT. NO. 506.91 BR. NO. 1 PROJ. NO. F020-1(10)

FOR APPROVAL | **FOR FILES & FIELD**

STEEL: ASTM. A36 A572 GRI A588 GRI Unless Noted

WELDING ELECTRODE: E70 See Welding Proc. None

SHOP CONN: Bolted Welded None

FIELD CONN: Bolted Welded None

HOLES: 13/16 15/16 Unless Noted None

PAINT: None Shopcoat Galv. After Fab. As Noted

SPECIAL PAINT: None Blast Clean None SSPC-SP6

GIRDER - G11B

APPROVED: 5-8-84
 PRINT DIST.
 7 3-26-84 APP.
 8 5-10-84 FAB.
 7 4-6-84 APP.

Bancroft & Martin Inc.
 South Portland, Maine 04106

JOB: U.S. 4 OVER TWO-WAY RAMP
 WEST RUTLAND, RUTLAND, VERMONT

CUSTOMER: M & J CONSTRUCTION CO.
 DESIGNER: STATE OF VERMONT, AGENCY OF TRANSP.

ORDER NO. 4-8 DRAWING NO. 52-13 REV. △

CHECKED: 3-20-84 RW
 DRAWN: 2-28-84 ELC

TEHSOR 920-08