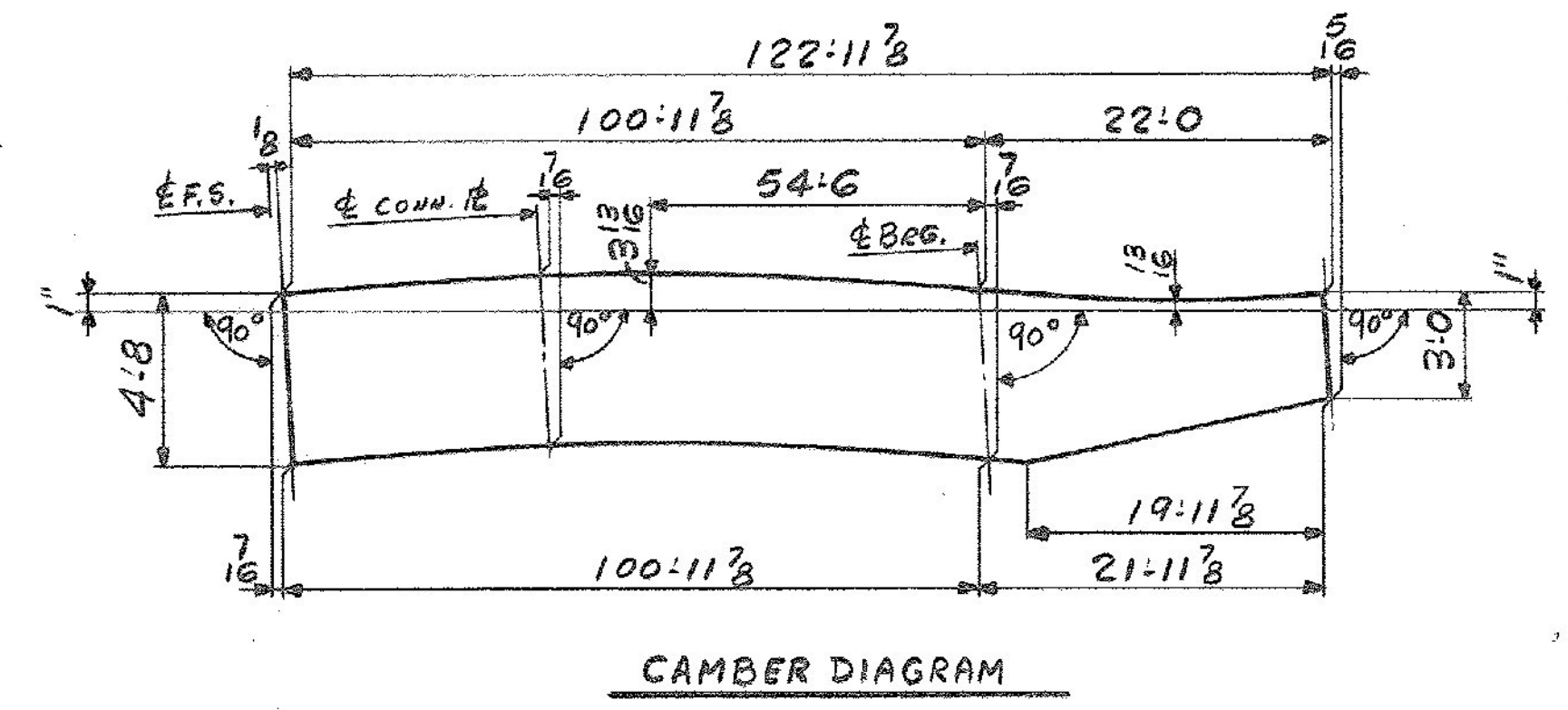
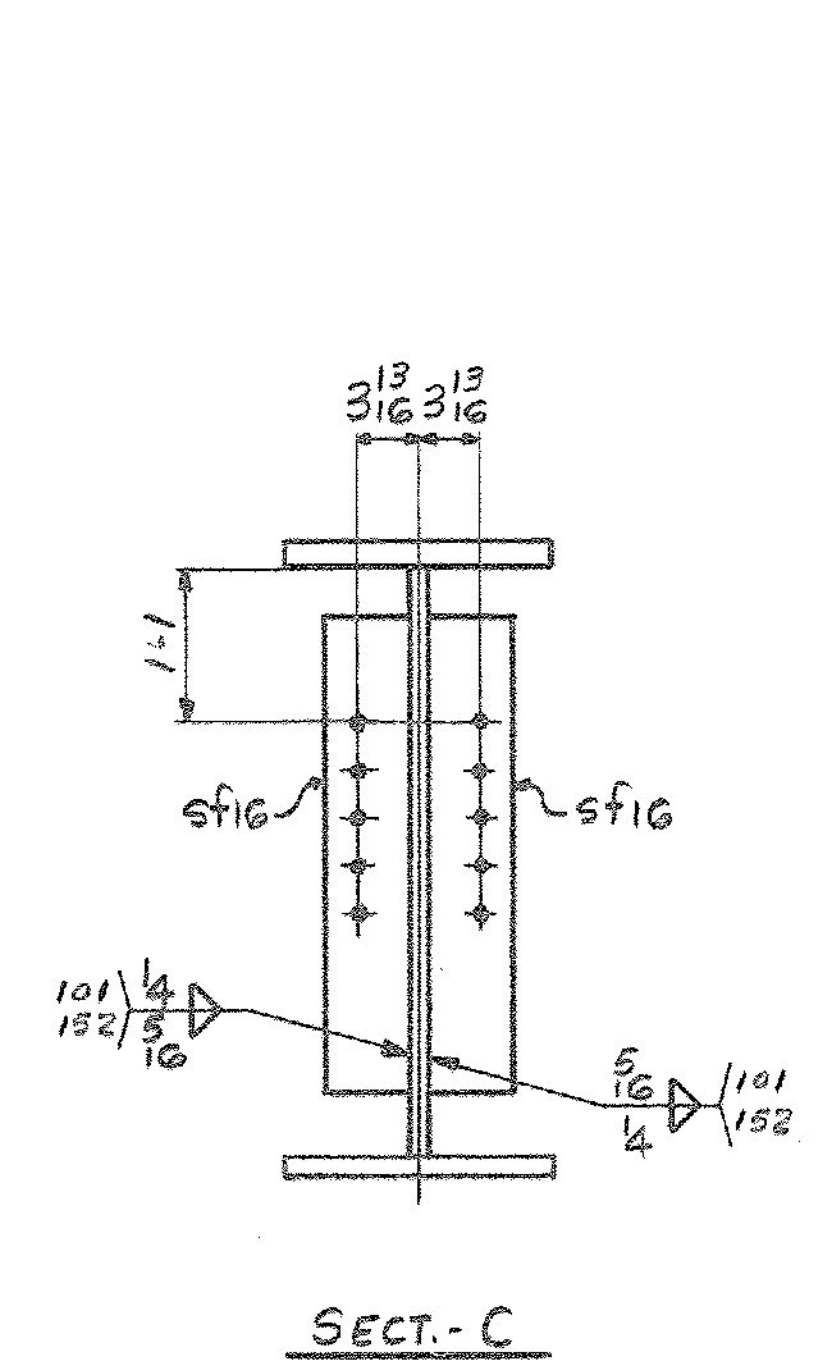
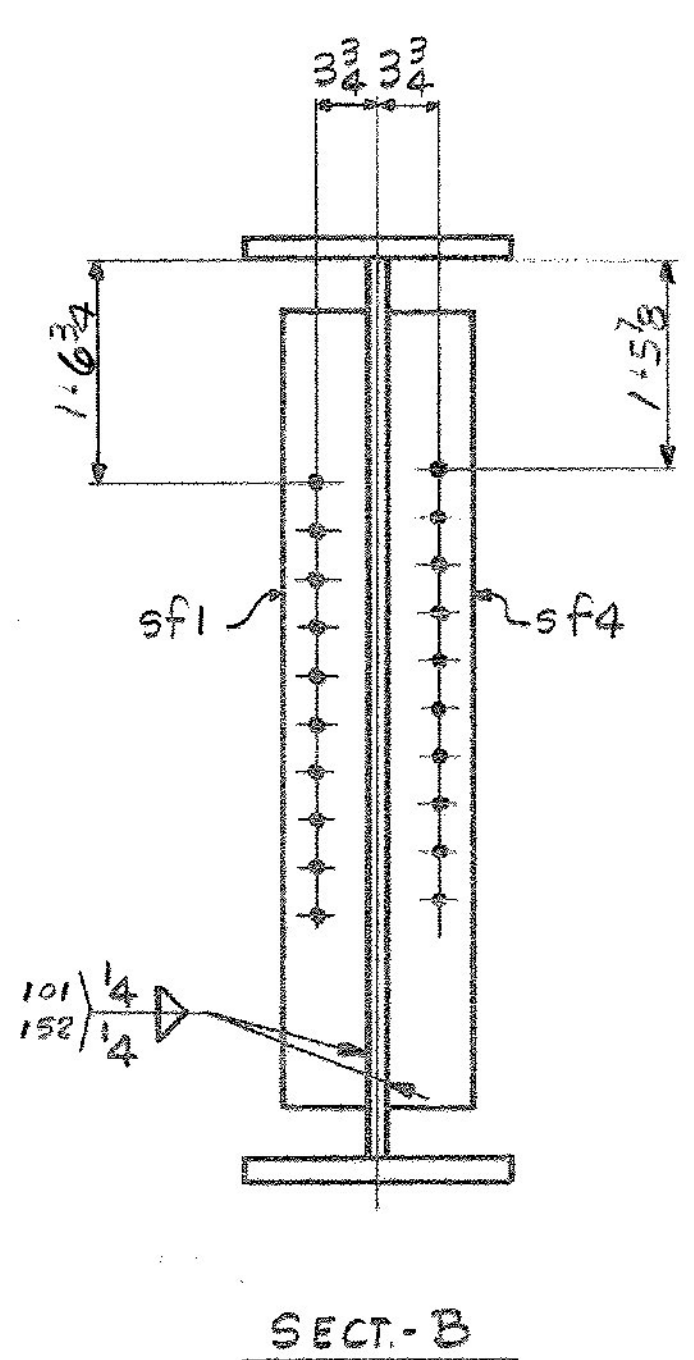
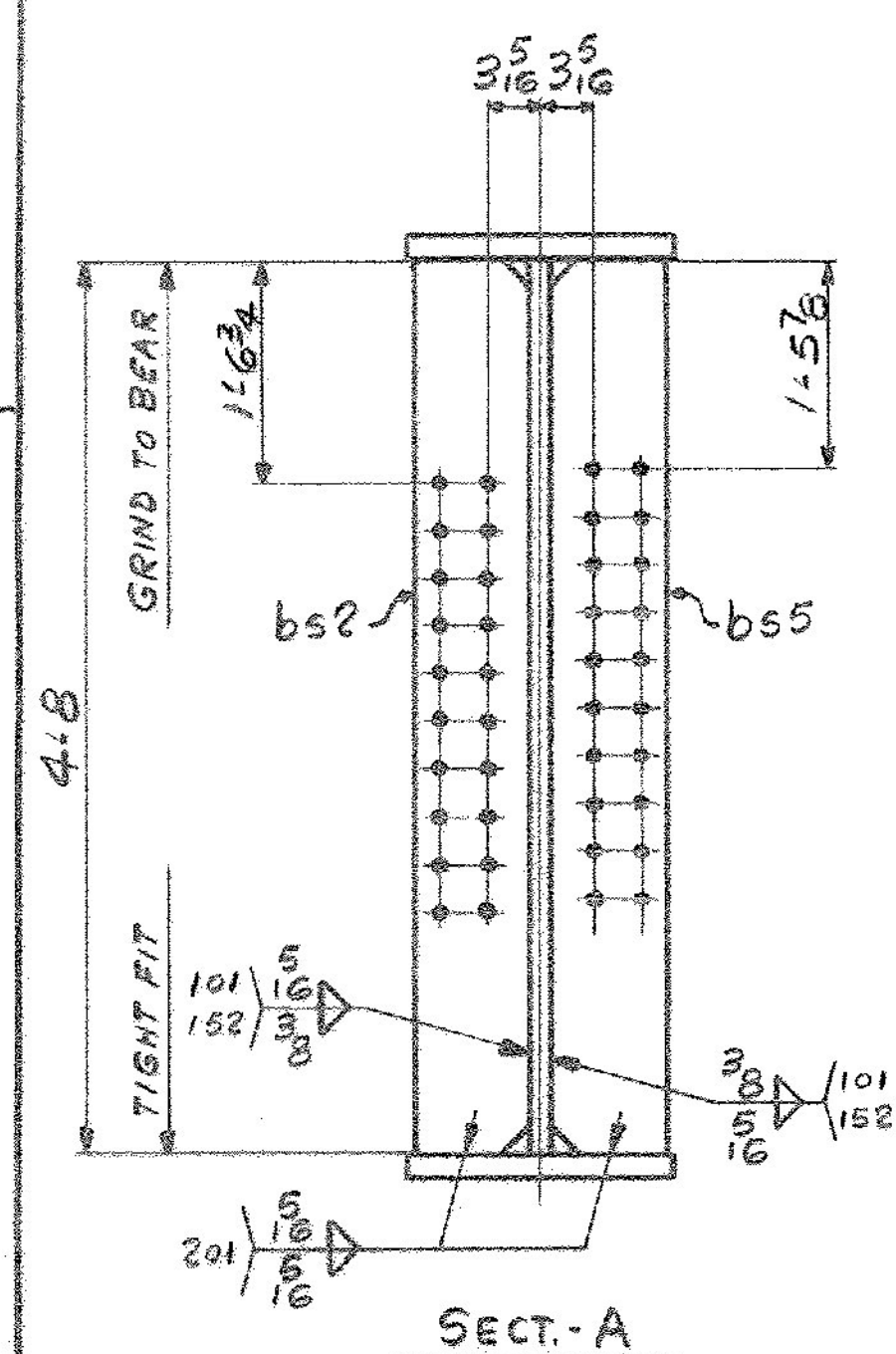
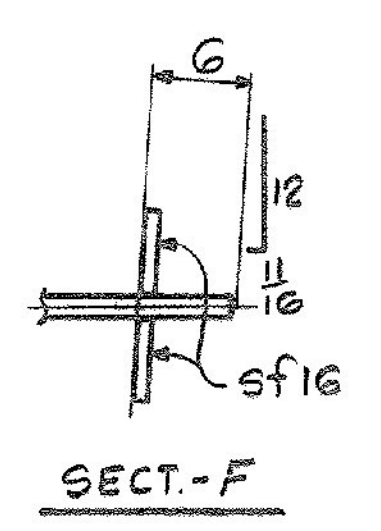
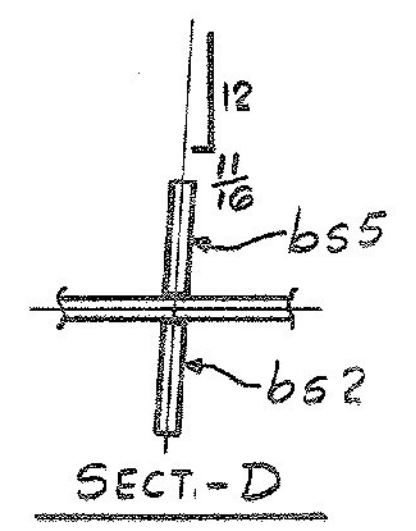


**ONE - GIRDER - GIOB**  
 FOR GIRDER STANDARD DETAILS SEE DWG. 52-2  
 FOR WEB R CUTTING SK. & FLG. R ASSY SEE DWG. 52-1  
 FOR SHOP ASSEMBLY DIAGRAM SEE DWG. 52-1



ALL CONNECTIONS DETAILED ON THIS DRAWING REPRESENT BANCROFT & MARTIN INC. STANDARDS. IN APPROVING THIS DRAWING FOR FABRICATION, THE ARCHITECT AND/OR ENGINEER ASSUMES THE RESPONSIBILITY FOR THE STRUCTURAL INTEGRITY OF ALL CONNECTIONS SHOWN.

SHIP		BILL OF MATERIAL		JOB NO.	DRAWING NO.	REV.
GIOB 1		GIRDER		4-8	52-12	△
MARK	NO.	MARK	SHAPE	LENGTH	WT	REMARKS
1	WP1	R	9/8 x 58	80 11 3/8	1/8	2800 CVN
1	WP2	R	9/8 x 56 3/4	42 0 1/8	1/8	CVN
1	tf1	R	7/8 x 16	81 11 3/8	1/8	3900
1	tf2	R	1 1/8 x 16	41 0	1/8	2511 CVN
1	bfi1	R	1 1/8 x 16	81 11 3/8	1/8	5022 CVN
1	bfi2	R	1 1/8 x 16	21 0	1/8	1286
1	bfi3	R	7/8 x 16	20 0 1/8	1/8	956
1	bfi4	BAR	7/8 x 1 1/2	4 8	1/8	97
1	bfi5	BAR	7/8 x 1 1/2	4 8	1/8	97
4	sf1	BAR	5 x 5/8	4 2	1/8	177
4	sf4	BAR	5 x 5/8	4 2	1/8	177
2	sf16	BAR	5 x 5/8	2 6	1/8	53
						270B2

IT. NO. 506.91 BR. NO. PROJ. NO. F020-1(10)

**FOR APPROVAL FOR FILES & FIELD**

STEEL: ASTM  A36  A572 GR1  A588 GR1  Unless Noted

WELDING ELECTRODE:  E70  See Welding Proc.  None

SHOP CONN:  Bolted  Welded  None

FIELD CONN:  Bolted  Welded  None

HOLES:  13/16  15/16  Unless Noted  None

PAINT:  None  Shopcoat  Galv. After Fab.  As Noted

SPECIAL PAINT:  Blast Clean  None  SSPC-SP6

**GIRDER - GIOB**

APPROVED: 5-8-84  
 PRINT DIST.  
 7 3-26-84 APP.  
 8 5-10-84 FAB.  
 7 4-6-84 APP.

**Bancroft & Martin Inc.**  
 South Portland, Maine 04106

JOB: U.S. 4 OVER TWO-WAY RAMP  
 WEST RUTLAND, RUTLAND, VERMONT

CUSTOMER: M & J CONSTRUCTION CO.  
 DESIGNER: STATE OF VERMONT, AGENCY OF TRANSP.

REV. △  
 CHECKED 3-20-84 RN  
 DRAWN 2-28-84 ELC

ORDER NO. JOB NO. DRAWING NO. REV.  
 4-8 52-12 △

TENSOR 920-08