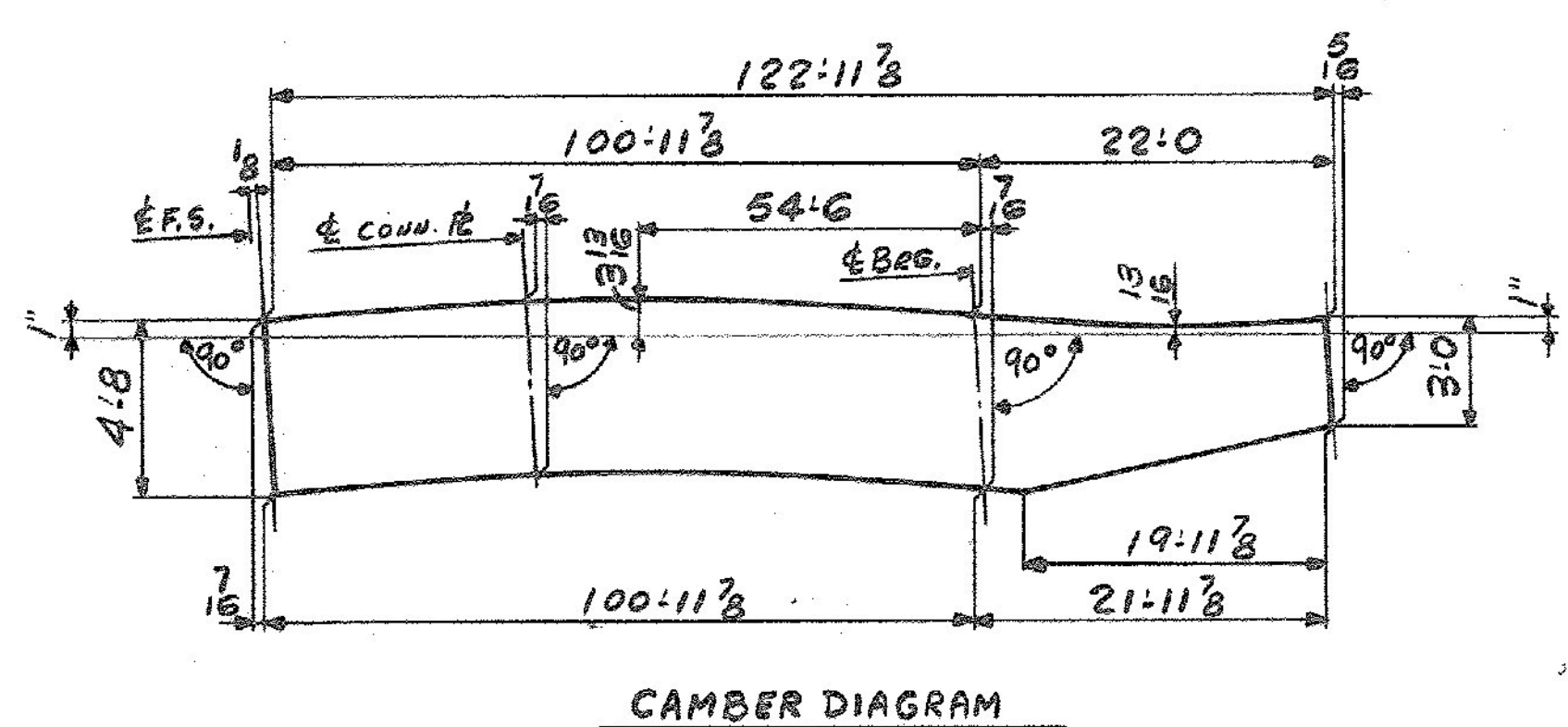
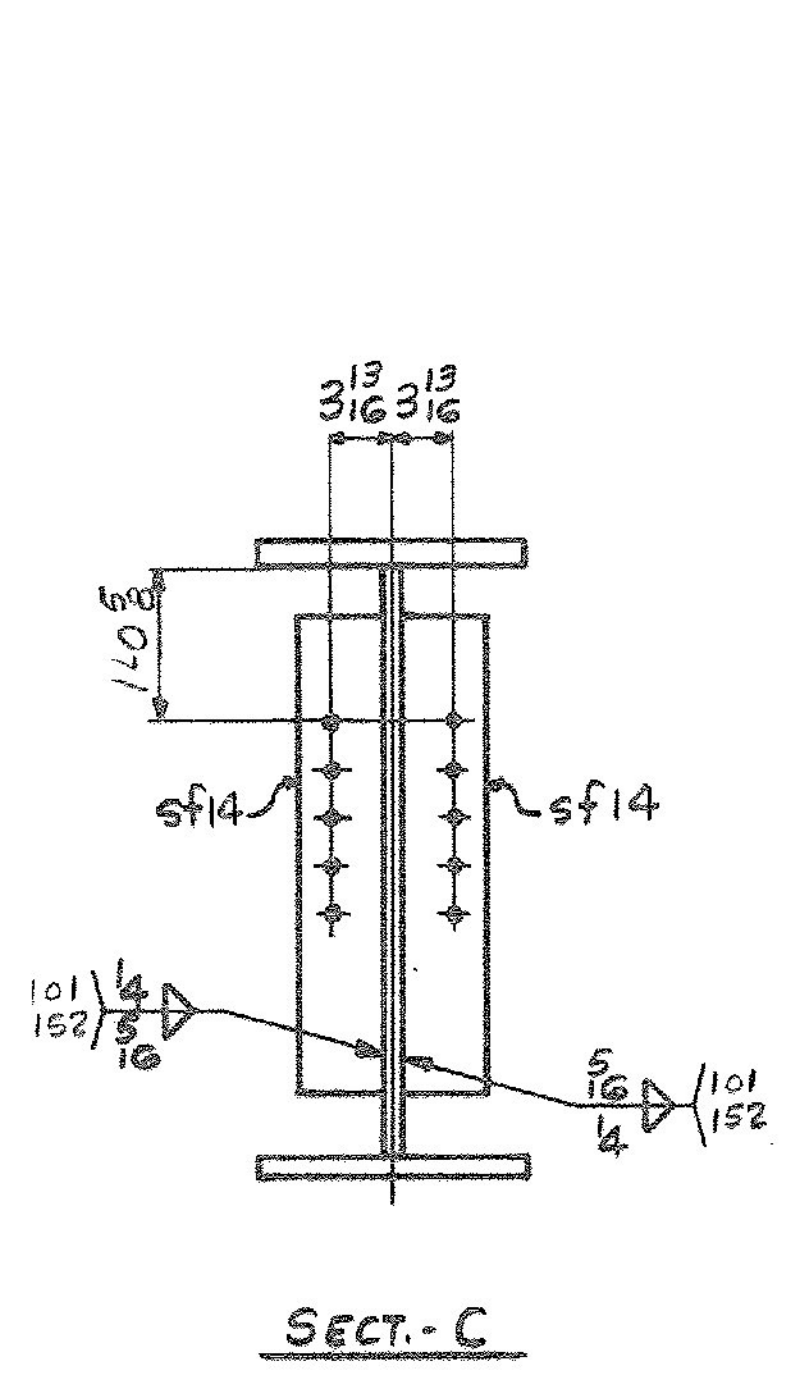
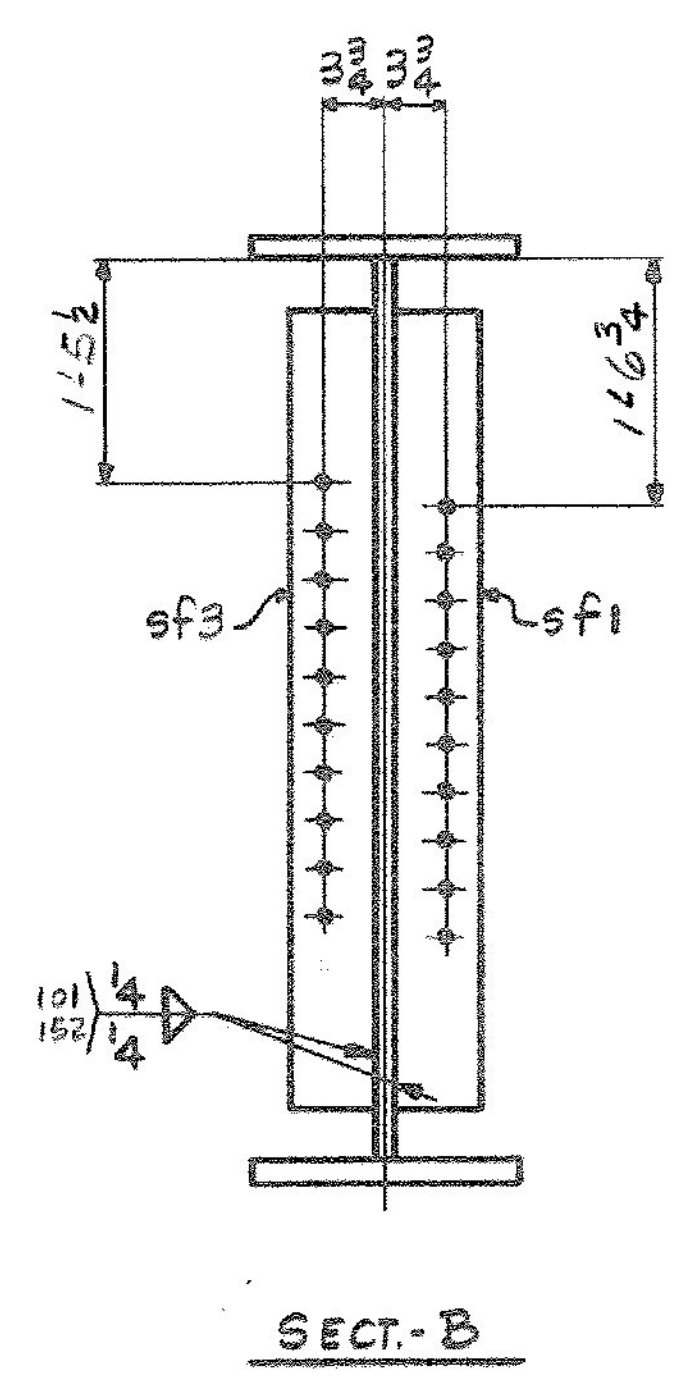
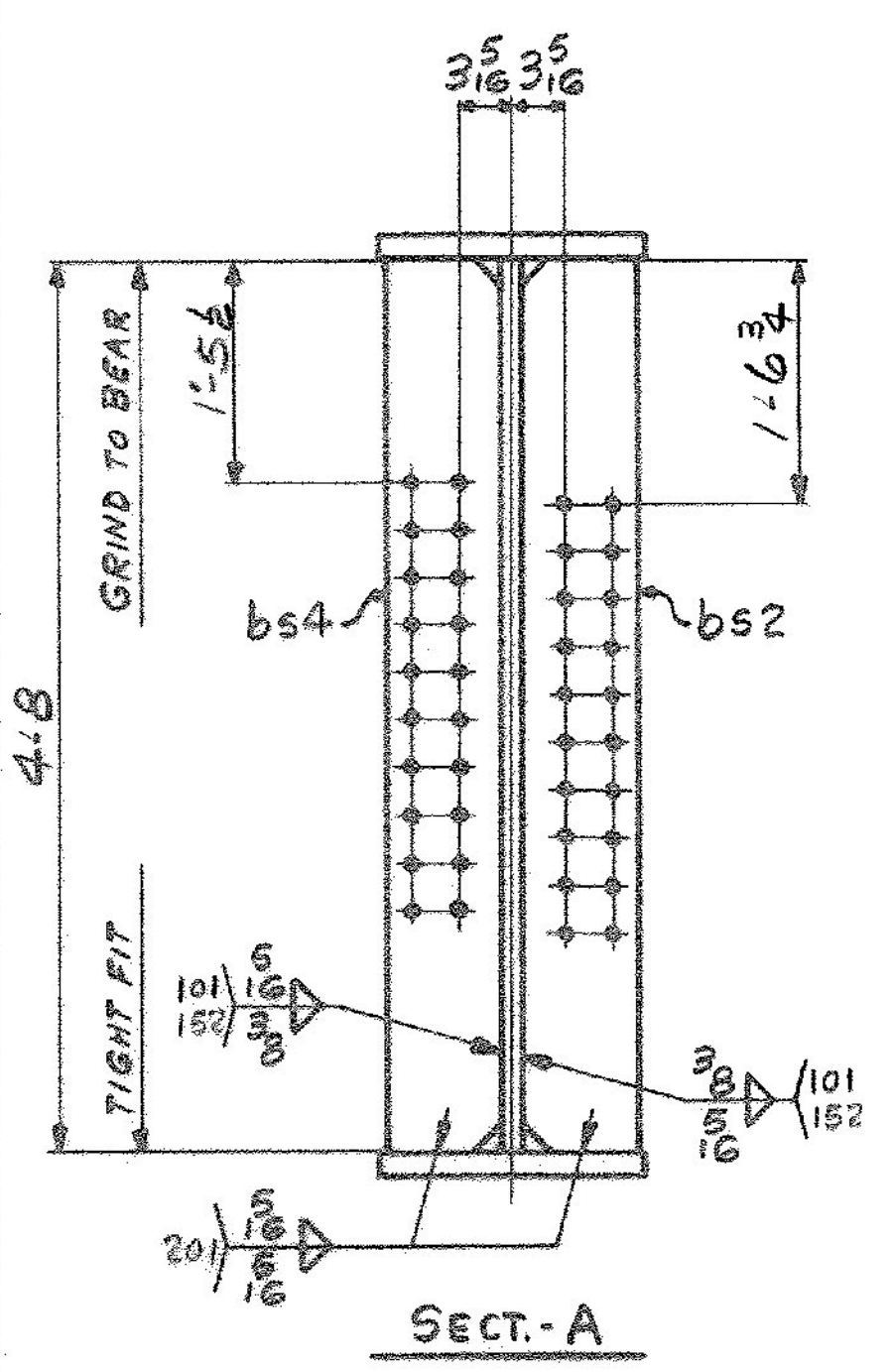
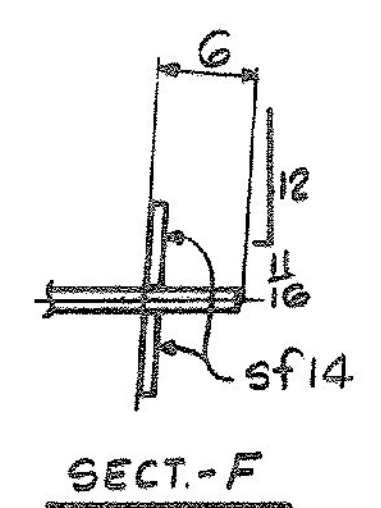
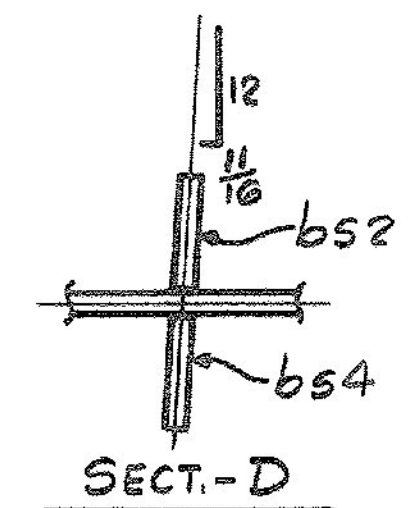


**ONE - GIRDER - G8B**  
 FOR GIRDER STANDARD DETAILS SEE DWG. 52-2  
 FOR WEB R CUTTING SK. & FLG. R ASSY SEE DWG. 52-1  
 FOR SHOP ASSEMBLY DIAGRAM SEE DWG. 52-1



ALL CONNECTIONS DETAILED ON THIS DRAWING REPRESENT BANCROFT & MARTIN INC. STANDARDS IN APPROVING THIS DRAWING FOR FABRICATION. THE ARCHITECT AND/OR ENGINEER ASSUMES THE RESPONSIBILITY FOR THE STRUCTURAL INTEGRITY OF ALL CONNECTIONS SHOWN.

SHIP		BILL OF MATERIAL			JOB NO.	DRAWING NO.	REV.	
G8B		GIRDER			4-8	52-10	△	
MARK	NO.	MARK	SHAPE	LENGTH	WPT.	ITEM NO.	WT	REMARKS
	1	wp1	R 9/8 x 58	80 11 3/8	1/8	12207		CVN
	1	wp2	R 9/8 x 56 3/4	42 0 1/8	1/8	12207		CVN
	1	tf1	R 7/8 x 16	81 11 3/8	1/2	12207		CVN
	1	tf2	R 1 1/8 x 16	41 0	1/2	12207		CVN
	1	bf1	R 1 1/8 x 16	81 11 3/8	1/2	12207		CVN
	1	bf2	R 1 1/8 x 16	21 0	1/2	12207		CVN
	1	bf3	R 7/8 x 16	20 0 1/8	1/2	12207		CVN
	1	bs2	BAR 7/8 x 1 1/2	4 8	1/2	12207		MIE FILE
	1	bs4	BAR 7/8 x 1 1/2	4 8	1/2	12207		MIE FILE
	4	sf1	BAR 5 x 5/8	4 2	1/2	12207		N 177
	4	sf3	BAR 5 x 5/8	4 2	1/2	12207		N 177
	2	sf14	BAR 5 x 5/8	2 6	1/2	12207		M 53
							27082#	

IT. NO. 506.91 BR. NO. 1 PROJ. NO. F020-1(10)

**FOR APPROVAL** **FOR FILES & FIELD**

STEEL: ASTM.  A36  A572 GR1  A588 GR1  Unless Noted

WELDING ELECTRODE:  E70  See Welding Proc.  None

SHOP CONN:  Bolted  Welded  None

FIELD CONN:  Bolted  Welded  None

HOLES:  13/16  15/16  Unless Noted  None

PAINT:  None  Shopcoat  Galv. After Fab.  As Noted

SPECIAL PAINT:  None  Blast Clean  None  SSPC-SP6

**GIRDER - G8B**

APPROVED: 5-8-84  
 PRINT DIST.  
 7 3-26-84 APP.  
 8 5-10-84 FAB.  
 7 4-6-84 APP

**Bancroft & Martin Inc.**  
 South Portland, Maine 04106

JOB: U.S. 4 OVER TWO-WAY RAMP  
 WEST RUTLAND, RUTLAND, VERMONT

CUSTOMER: M & J CONSTRUCTION CO.  
 DESIGNER: STATE OF VERMONT, AGENCY OF TRANSP.

ORDER NO. JOB NO. DRAWING NO. REV.  
 4-8 52-10 △

REV. △  
 CHECKED 3-20-84 RW  
 DRAWN 2-28-84 ELC