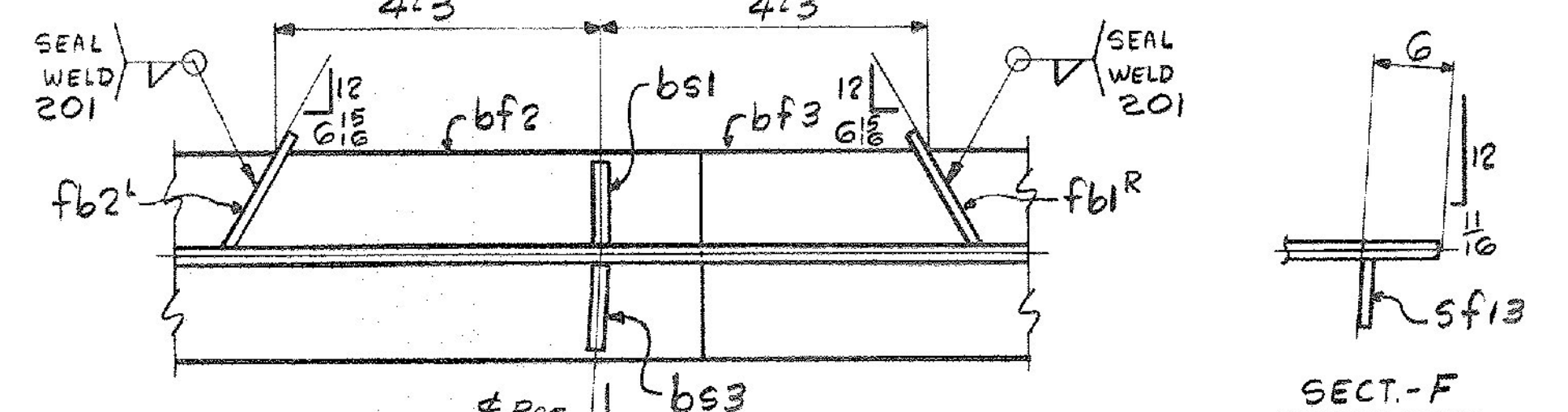
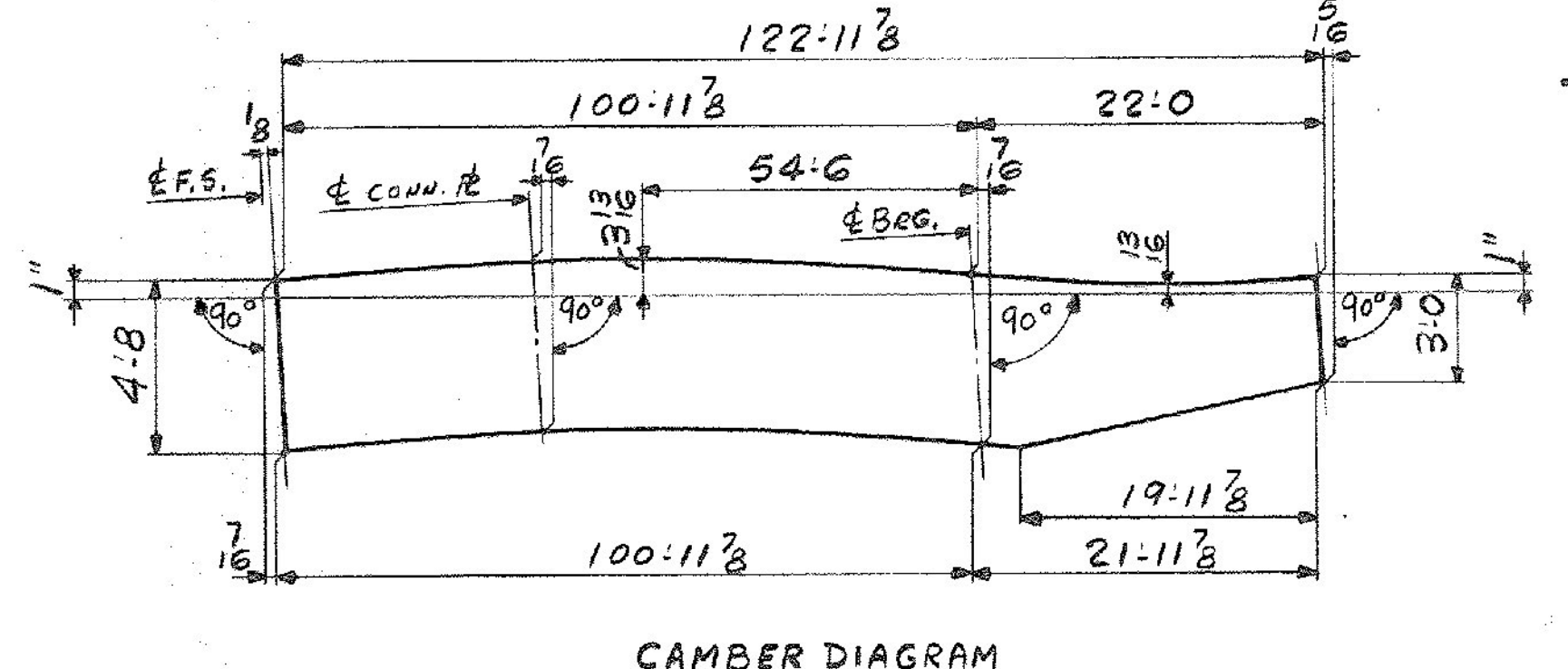
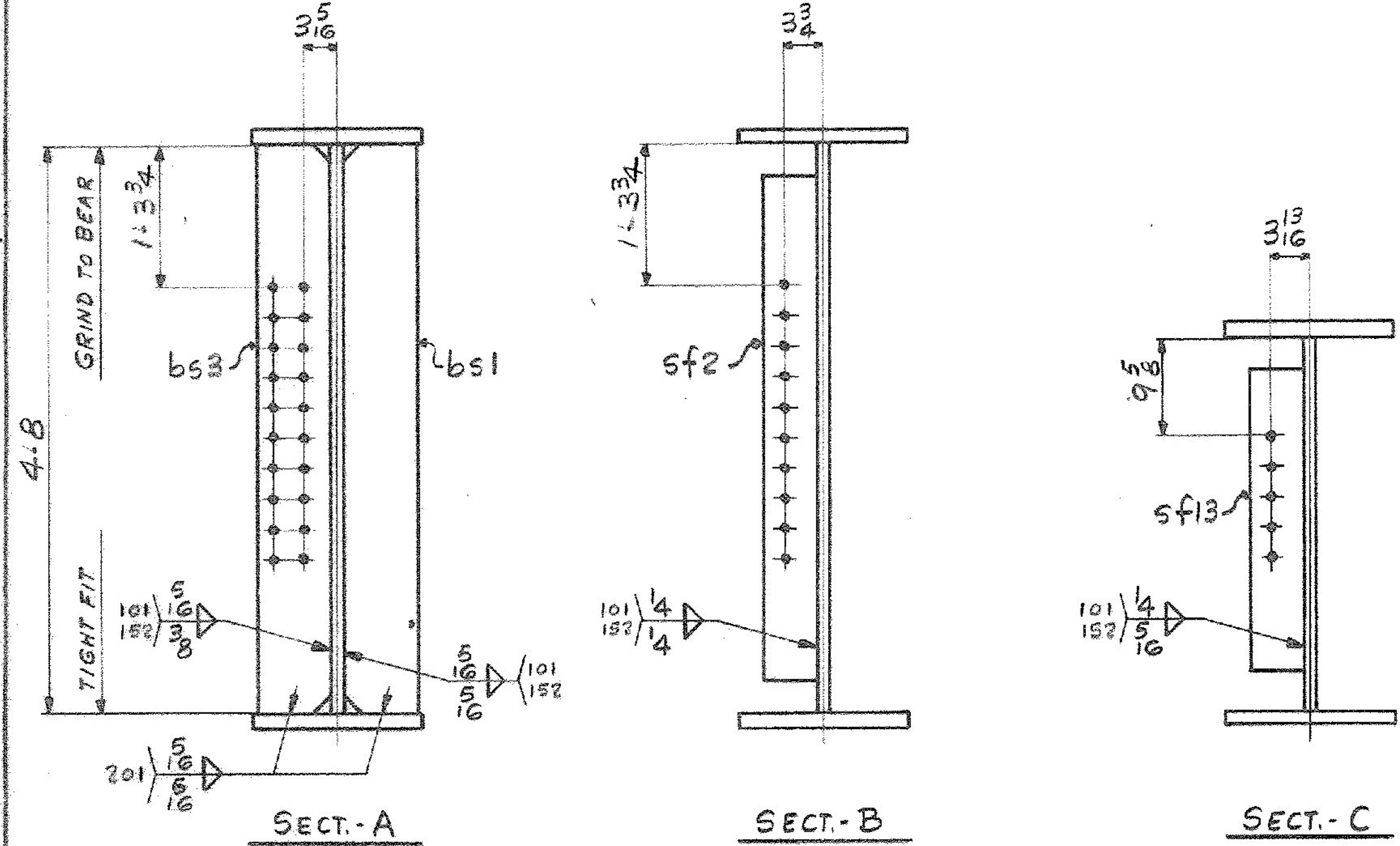


SHIP		BILL OF MATERIAL		JOB NO.		DRAWING NO.		REV.
				4-8		52-9		△
MARK	NO.	MARK	SHAPE	LENGTH	WT.	ITEM NO.	WT.	REMARKS
G7B	1		GIRDER					
	1	wp1	PL 9/16 x 58	80 11 3/8	12800	1/B	12800	CVN
	1	wp2	PL 9/16 x 56 3/4	42 0 1/8	12374	1/C	12374	CVN
	1	tf1	PL 7/8 x 16	81 11 3/8	3906	1/F	3906	
	1	tf2	PL 1 1/2 x 16	41 0	2511	1/D	2511	CVN
	1	bf1	PL 1 1/2 x 16	81 11 3/8	5022	1/G	5022	CVN
	1	bf2	PL 1 1/2 x 16	21 0	1286	1/E	1286	
	1	bf3	PL 7/8 x 16	20 0 1/8	956	1/H	956	
	1	bs1	BAR 7/8 x 1 1/2	4 8	97	1/I	97	MIE FILE
	1	bs3	BAR 7/8 x 1 1/2	4 8	97	1/J	97	MIE FILE
	4	sf2	BAR 5 x 3/8	4 2	177	1/K	177	
	1	sf13	BAR 5 x 3/8	2 6	27	1/L	27	
	1	fb1R	PL 1/4 x 2 1/2	0 10 1/2	2	1/M	2	
	1	fb2L	PL 1/4 x 3 1/8	0 10 1/2	2	1/N	2	

**ONE - GIRDER - G7B**  
 FOR GIRDER STANDARD DETAILS SEE DWG. 52-2  
 FOR WEB R CUTTING SK. & FLG. R ASSY SEE DWG. 52-1  
 FOR SHOP ASSEMBLY DIAGRAM SEE DWG. 52-1



DIM. (X)	
6'-0	66'-0
10'-0	70'-0
14'-0	74'-0
18'-0	78'-0
22'-0	82'-0
26'-0	86'-0
30'-0	90'-0
34'-0	94'-0
38'-0	98'-0
42'-0	102'-0
46'-0	106'-0
50'-0	110'-0
54'-0	114'-0
58'-0	118'-0
62'-0	121'-8



ALL CONNECTIONS DETAILED ON THIS DRAWING REPRESENT BANCROFT & MARTIN INC. STANDARDS. IN APPROVING THIS DRAWING FOR FABRICATION, THE ARCHITECT AND/OR ENGINEER ASSUMES THE RESPONSIBILITY FOR THE STRUCTURAL INTEGRITY OF ALL CONNECTIONS SHOWN.

IT. NO. 506.91 BR. NO. 1 PROJ. NO. F020-1(10)

**FOR APPROVAL** **FOR FILES & FIELD**

STEEL: ASTM.  A36  A572 GR1  A588 GR1  Unless Noted

WELDING ELECTRODE:  E70  See Welding Proc.  None

SHOP CONN.:  Bolted  Welded  None

FIELD CONN.:  Bolted  Welded  None

HOLES:  13/16  15/16  Unless Noted  None

PAINT:  None  Shopcoat  Galv. After Fab  As Noted

SPECIAL PAINT:  Blast Clean  None  SSPC-SP6

**GIRDER - G7B**

APPROVED: 5-3-84  
 PRINT DIST  
 7 3-26-84 APP.  
 8 5-70-84 FAB.  
 7 4-6-84 APP.

*Bancroft & Martin Inc.*  
 South Portland, Maine 04106

JOB: U.S. 4 OVER TWO-WAY RAMP  
 WEST RUTLAND, RUTLAND, VERMONT

CUSTOMER: M & J CONSTRUCTION CO.  
 DESIGNER: STATE OF VERMONT, AGENCY OF TRANSP.

REV. △  
 CHECKED: 3-20-84 R/W  
 DRAWN: 2-28-84 ELC

ORDER NO. JOB NO. DRAWING NO. REV.  
 4-8 52-9 △