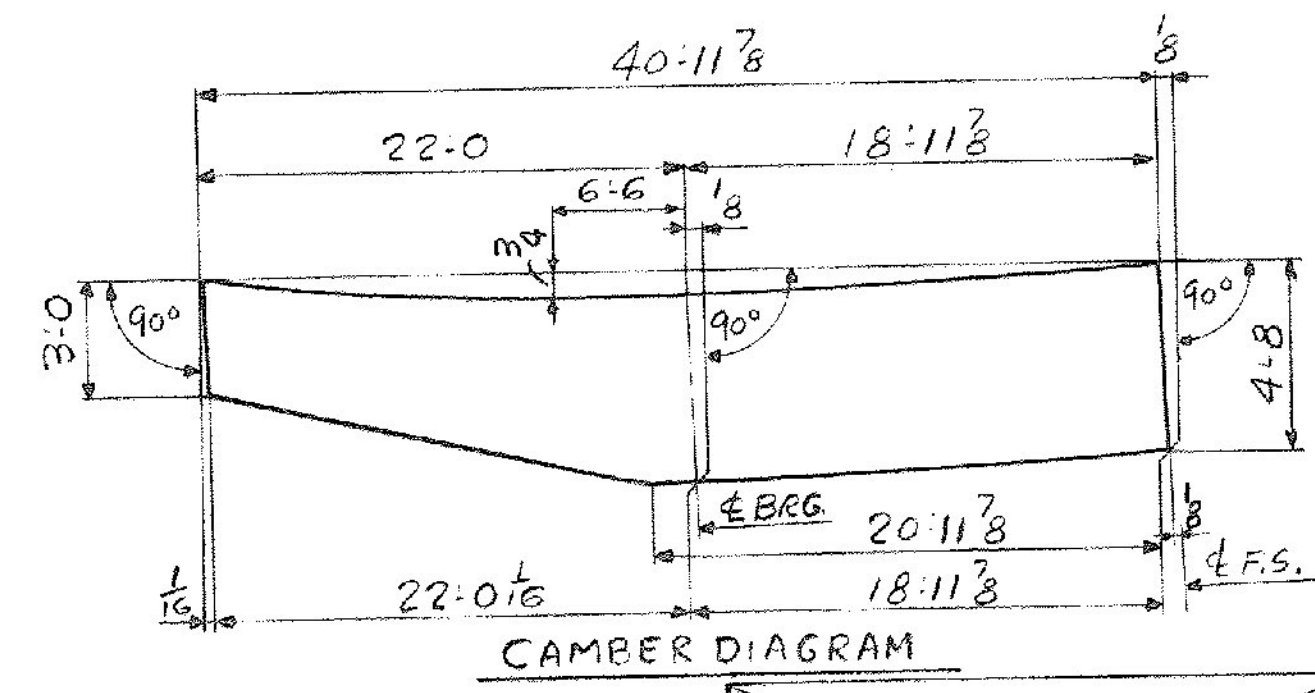
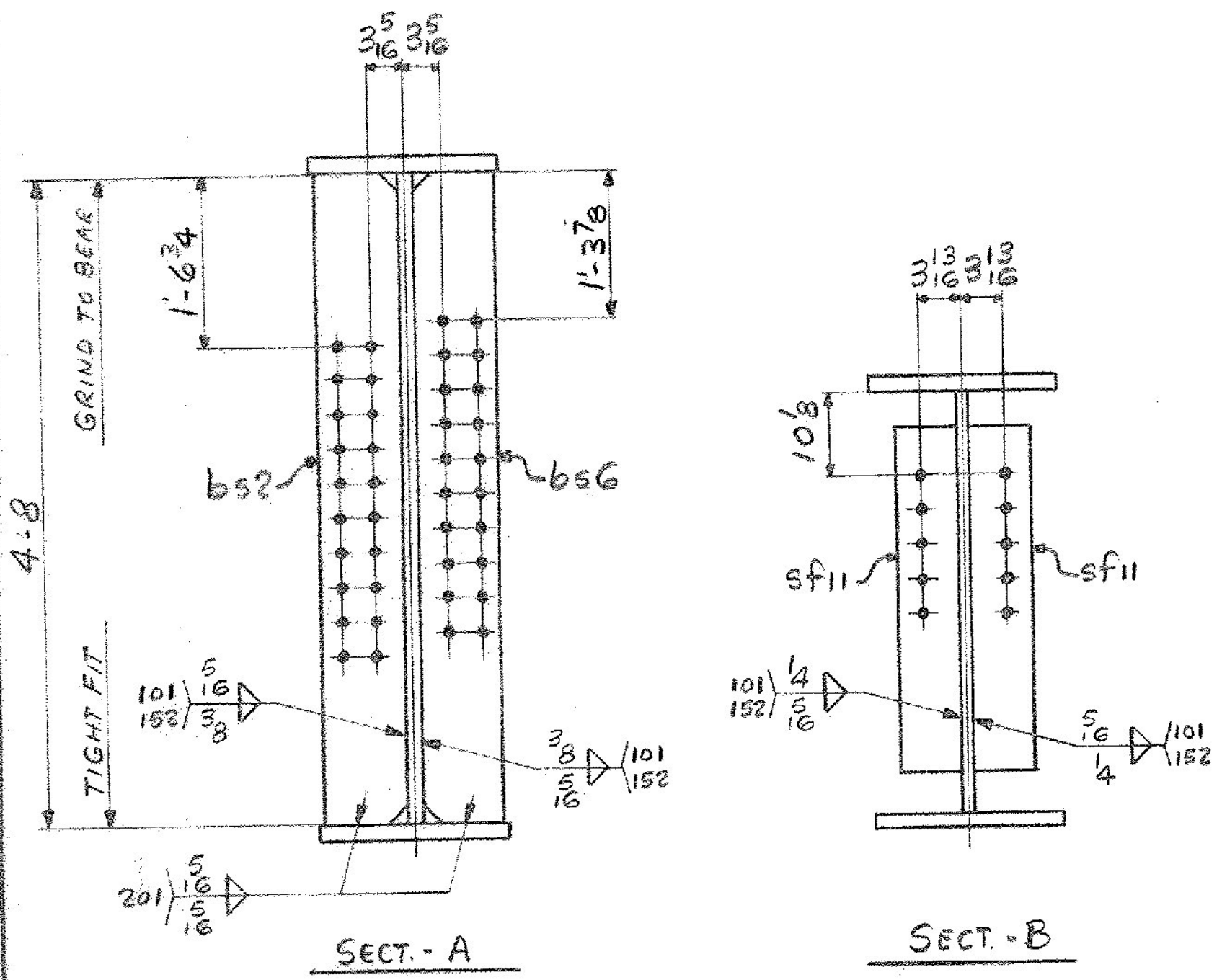


ONE GIRDER - G11A
 FOR GIRDER STANDARD DETAILS SEE DWG. 52-2
 FOR WEB R CUTTING SK. & FLG. R ASSY SEE DWG. 52-1
 FOR SHOP ASSEMBLY DIAGRAM SEE DWG. 52-1



ALL CONNECTIONS DETAILED ON THIS DRAWING REPRESENT BANCROFT & MARTIN INC. STANDARDS. IN APPROVING THIS DRAWING FOR FABRICATION, THE ARCHITECT AND/OR ENGINEER ASSUMES THE RESPONSIBILITY FOR THE STRUCTURAL INTEGRITY OF ALL CONNECTIONS SHOWN.

SHIP		BILL OF MATERIAL				JOB NO.	DRAWING NO.	REV.
G11A		GIRDER				4-8	52-7	△
MARK	NO.	MARK	SHAPE	LENGTH	WT	ITEM NO.	WT	REMARKS
1	wpl		R 9/8 x 56 3/4	41 0	12.374	1/A	4012	CVN
1	tf1		R 1 1/2 x 16	40 11 3/8	10.2	1/D	2511	CVN
1	bf1		R 3/8 x 16	20 0 1/16	16.3	1/H	756	
1	bf2		R 1/8 x 16	20 11 3/8	21.2	1/E	1286	
2	sp1		R 1/2 x 5 1/2	2 2	30.0	1/Q	380	CVN
1	sp2		R 1/2 x 16	2 5	10.1	1/R	66	CVN
2	sp3		R 3/8 x 7	2 5	16.1	1/T	72	CVN
1	sp4		R 1/2 x 16	1 2 3/8	17.6	1/P	16	
1	sp5		R 3/8 x 16	2 11	17.6	1/S	99	CVN
2	sp6		R 1/2 x 7	2 11	17.6	1/U	96	CVN
1	bs2		BAR 7/8 x 1 3/8	4 8	10.6	1/O	97	MIE
1	bsG		BAR 7/8 x 1 3/8	4 8	10.6	1/O	97	MIE
2	sf11		BAR 5 x 3/8	2 6	12.6	1/M	53	

IT NO. 506.91 BR. NO. PROJ. NO. F020-1(10)

FOR APPROVAL **FOR FILES & FIELD**

STEEL: ASTM. A36 A572 Gr. A588 GR Unless Noted

WELDING ELECTRODE E70 See Welding Proc. None

SHOP CONN. Bolted Welded None

FIELD CONN. Bolted Welded None

HOLES: 13-16 15-16 Unless Noted None

PAINT: None Shopcoat Galv. After Fab. As Noted

SPECIAL PAINT: Blast Clean None SSPC-SP6

SPECIAL CLEANING: Blast Clean None SSPC-SP6

GIRDER G11A

APPROVED: 5-8-84
 PRINT DIST
 7 3-26-84 APP.
 8 5-10-84 FAB.
 7 4-6-84 APP.

Bancroft & Martin Inc.
 South Portland, Maine 04106
 JOB: U.S. 4 OVER TWO-WAY RAMP
 WEST RUTLAND, RUTLAND, VERMONT

CUSTOMER: M&J CONSTRUCTION CO.
 DESIGNER: STATE OF VERMONT, AGENCY OF TRANSP.

REV. △
 CHECKED 3-20-84 RW
 DRAWN 2-27-84 ELC

ORDER NO. JOB NO. DRAWING NO. REV.
 4-8 52-7 △

TENSOR 920-08